

5/28/99

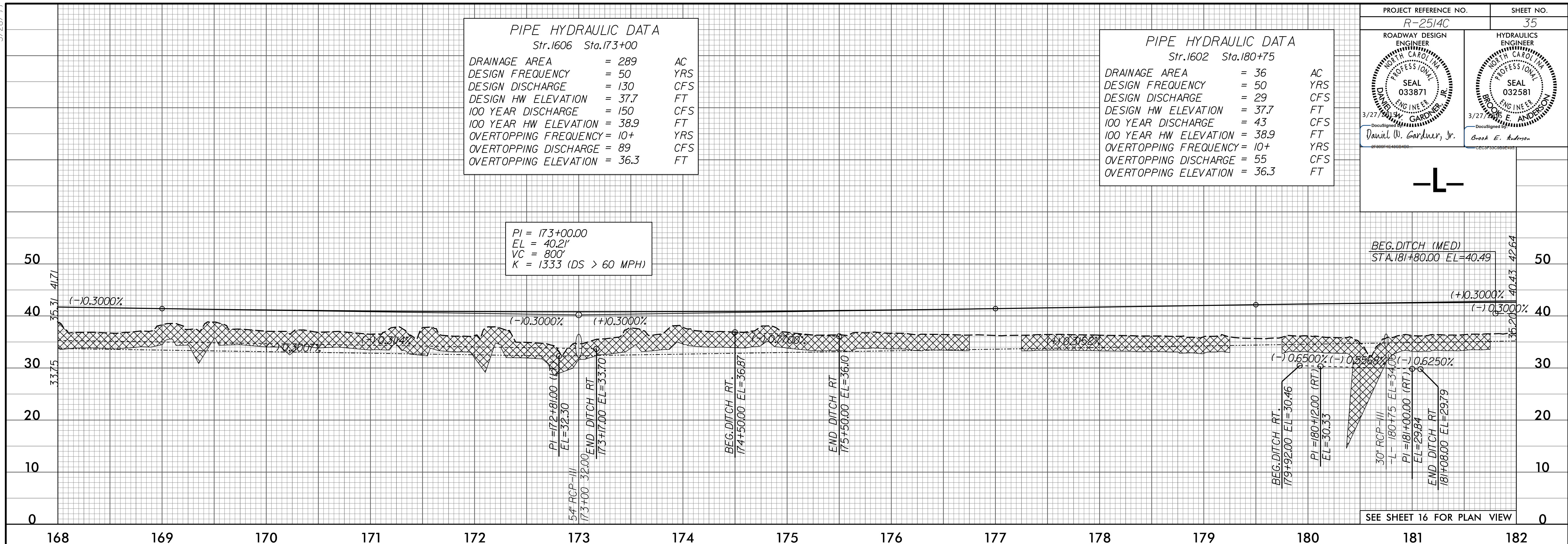
PROJECT REFERENCE NO. R-2514C	SHEET NO. 35
ROADWAY DESIGN ENGINEER DANIEL W. GARDNER, JR. 3/27/99 SEAL 033871	HYDRAULICS ENGINEER BROOK E. ANDERSON 3/27/99 SEAL 032581

PIPE HYDRAULIC DATA
Str.1606 Sta.173+00

DRAINAGE AREA	= 289	AC
DESIGN FREQUENCY	= 50	YRS
DESIGN DISCHARGE	= 130	CFS
DESIGN HW ELEVATION	= 37.7	FT
100 YEAR DISCHARGE	= 150	CFS
100 YEAR HW ELEVATION	= 38.9	FT
OVERTOPPING FREQUENCY	= 10+	YRS
OVERTOPPING DISCHARGE	= 89	CFS
OVERTOPPING ELEVATION	= 36.3	FT

PIPE HYDRAULIC DATA
Str.1602 Sta.180+75

DRAINAGE AREA	= 36	AC
DESIGN FREQUENCY	= 50	YRS
DESIGN DISCHARGE	= 29	CFS
DESIGN HW ELEVATION	= 37.7	FT
100 YEAR DISCHARGE	= 43	CFS
100 YEAR HW ELEVATION	= 38.9	FT
OVERTOPPING FREQUENCY	= 10+	YRS
OVERTOPPING DISCHARGE	= 55	CFS
OVERTOPPING ELEVATION	= 36.3	FT



PI = 173+00.00
EL = 40.21'
VC = 800'
K = 1333 (DS > 60 MPH)

BEG. DITCH (MED)
STA.181+80.00 EL=40.49

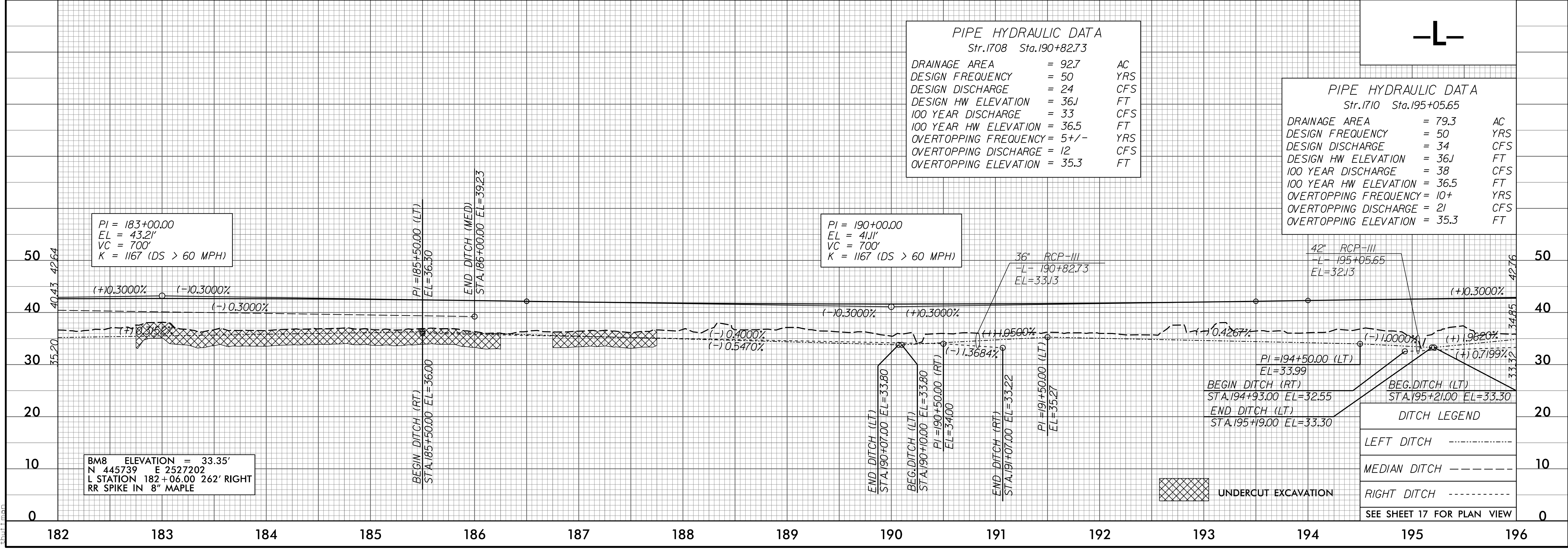
SEE SHEET 16 FOR PLAN VIEW

PIPE HYDRAULIC DATA
Str.1708 Sta.190+82.73

DRAINAGE AREA	= 92.7	AC
DESIGN FREQUENCY	= 50	YRS
DESIGN DISCHARGE	= 24	CFS
DESIGN HW ELEVATION	= 36J	FT
100 YEAR DISCHARGE	= 33	CFS
100 YEAR HW ELEVATION	= 36.5	FT
OVERTOPPING FREQUENCY	= 5+/-	YRS
OVERTOPPING DISCHARGE	= 12	CFS
OVERTOPPING ELEVATION	= 35.3	FT

PIPE HYDRAULIC DATA
Str.1710 Sta.195+05.65

DRAINAGE AREA	= 79.3	AC
DESIGN FREQUENCY	= 50	YRS
DESIGN DISCHARGE	= 34	CFS
DESIGN HW ELEVATION	= 36J	FT
100 YEAR DISCHARGE	= 38	CFS
100 YEAR HW ELEVATION	= 36.5	FT
OVERTOPPING FREQUENCY	= 10+	YRS
OVERTOPPING DISCHARGE	= 21	CFS
OVERTOPPING ELEVATION	= 35.3	FT



PI = 183+00.00
EL = 43.21'
VC = 700'
K = 1167 (DS > 60 MPH)

PI = 190+00.00
EL = 41.11'
VC = 700'
K = 1167 (DS > 60 MPH)

BM8 ELEVATION = 33.35'
N 445739 E 2527202
L STATION 182+06.00 262' RIGHT
RR SPIKE IN 8" MAPLE

DITCH LEGEND

- LEFT DITCH - - - - -
- MEDIAN DITCH - - - - -
- RIGHT DITCH - - - - -

SEE SHEET 17 FOR PLAN VIEW

UNDERCUT EXCAVATION

P:\862015\01\Cadd\2514C\Roadway\Proj\R2514C_Rdy.plt.dgn
 3/18/2015 10:56:25 AM
 10:56:25 AM