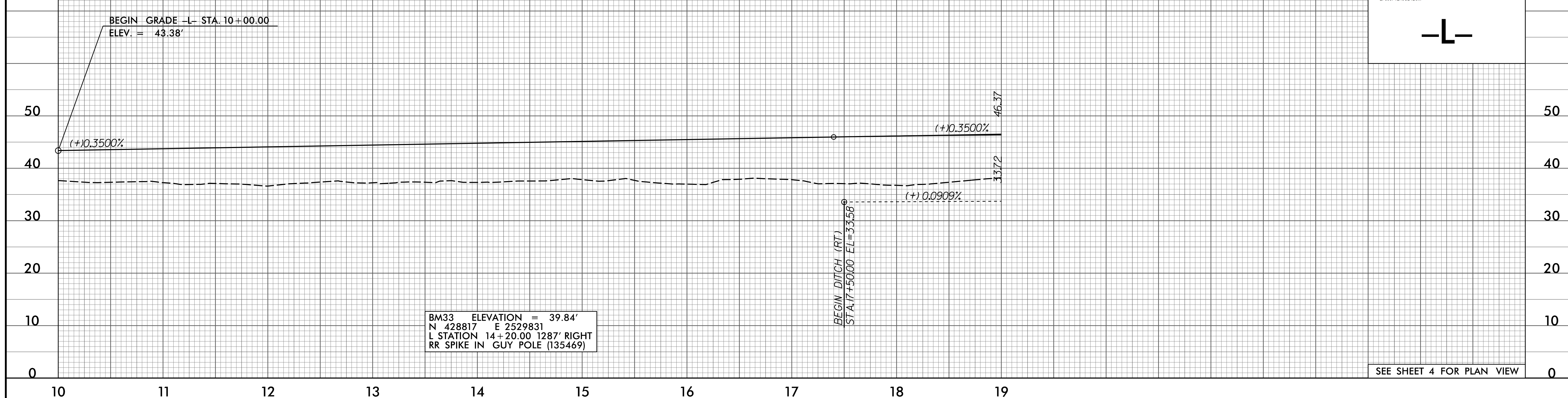


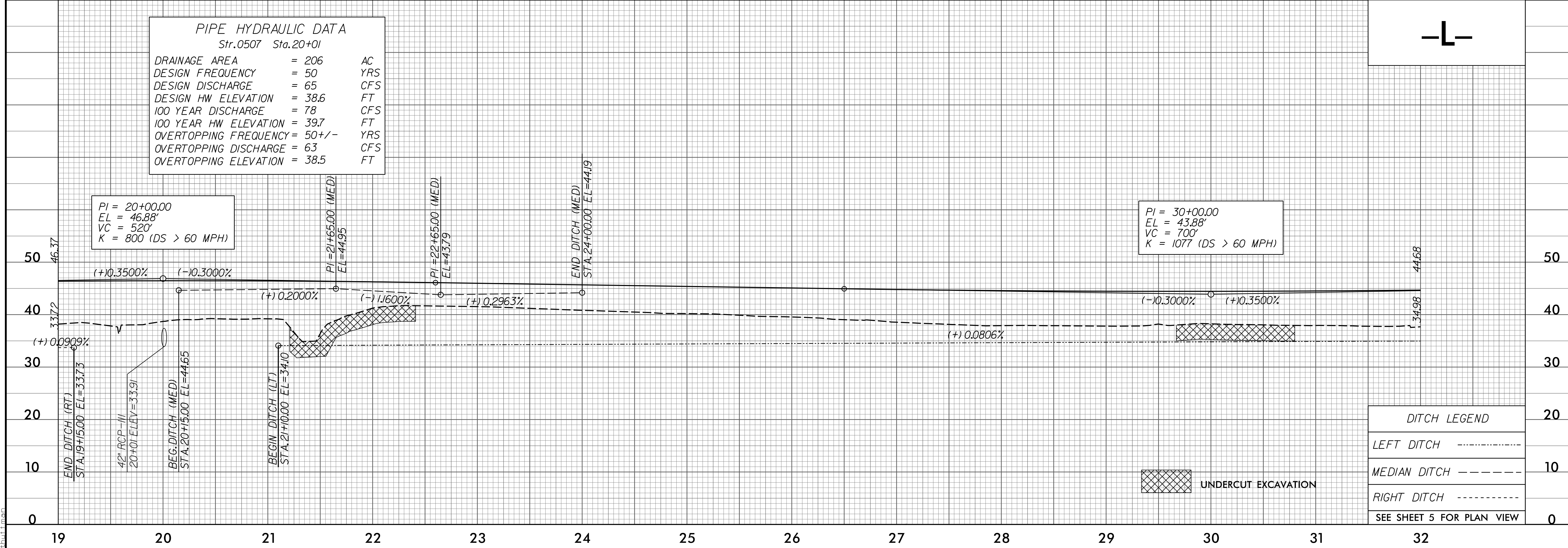
5/28/99

PROJECT REFERENCE NO. R-2514C	SHEET NO. 29
ROADWAY DESIGN ENGINEER DANIEL W. GARDNER, JR. NORTH CAROLINA PROFESSIONAL SEAL 033871 3/27/99	HYDRAULICS ENGINEER BROOK E. ANDERSON NORTH CAROLINA PROFESSIONAL SEAL 032581 3/27/99



PIPE HYDRAULIC DATA  
Str.0507 Sta.20+01

DRAINAGE AREA	= 206	AC
DESIGN FREQUENCY	= 50	YRS
DESIGN DISCHARGE	= 65	CFS
DESIGN HW ELEVATION	= 38.6	FT
100 YEAR DISCHARGE	= 78	CFS
100 YEAR HW ELEVATION	= 39.7	FT
OVERTOPPING FREQUENCY	= 50 +/-	YRS
OVERTOPPING DISCHARGE	= 63	CFS
OVERTOPPING ELEVATION	= 38.5	FT



F:\18\2015\01\Cadd\2514C\Roadway\Proj\R2514C\_Rdy.plt.dgn