

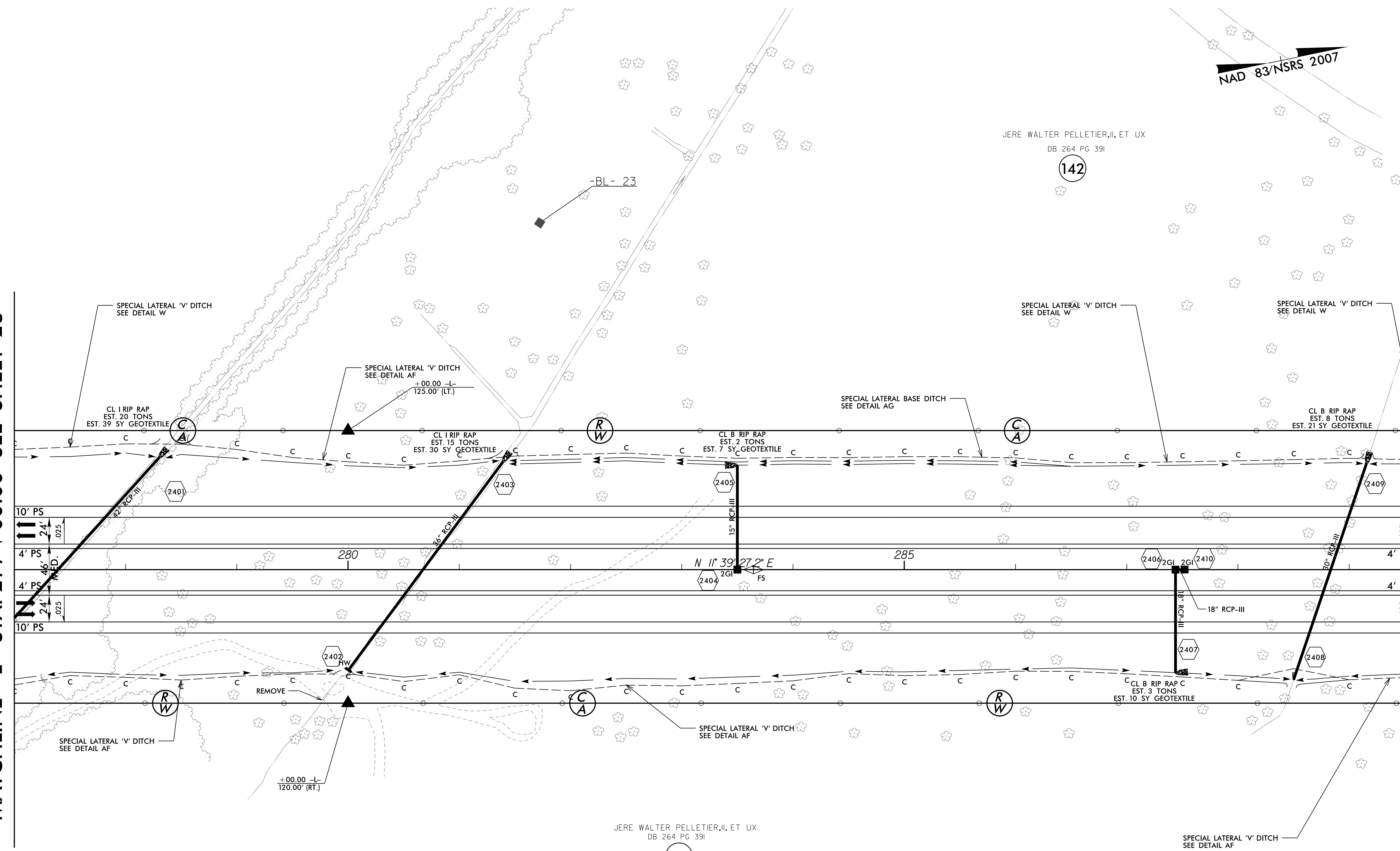
NAD 83/NSRS 2007

JERE WALTER PELLETIER, II, ET UX
DB 264 PG 391

142

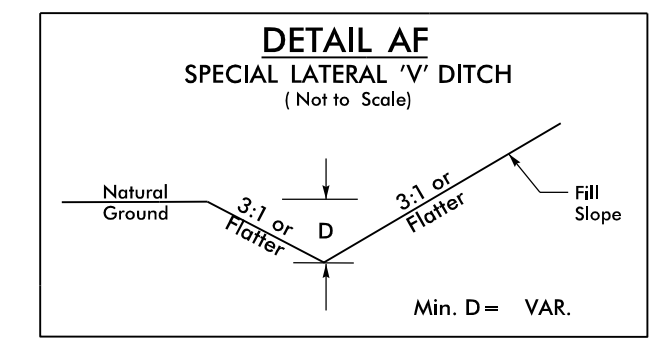
MATCHLINE -L- STA. 277 + 00.00 SEE SHEET 23

MATCHLINE -L- STA. 290 + 00.00 SEE SHEET 25

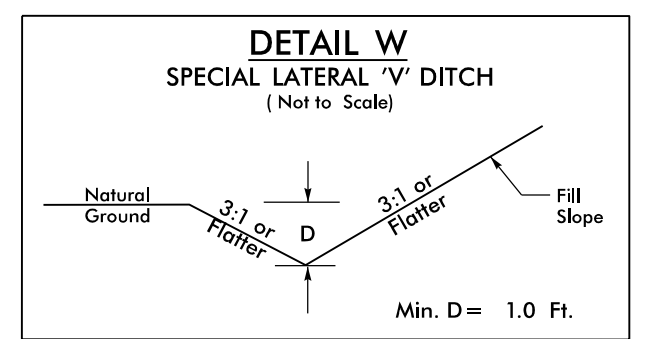


JERE WALTER PELLETIER, II, ET UX
DB 264 PG 391

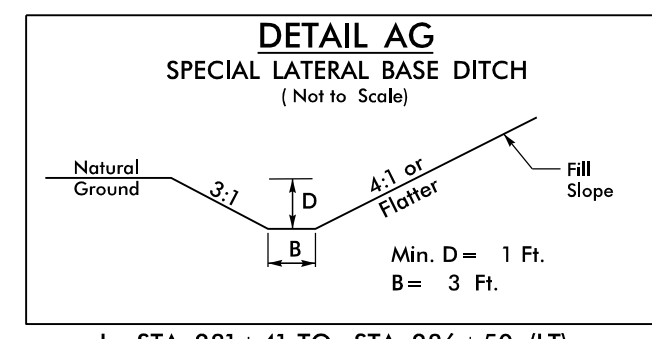
142



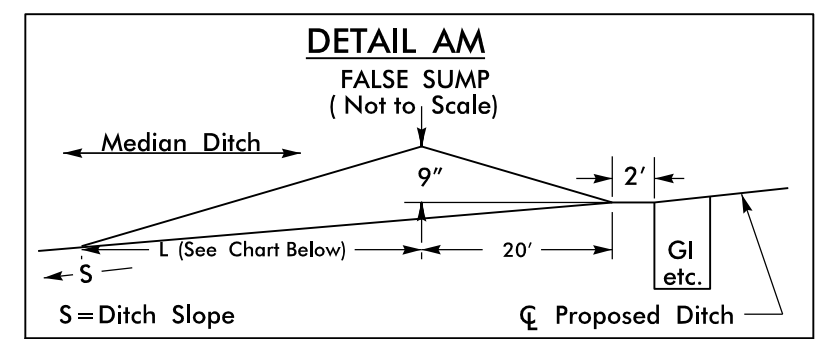
- L- STA. 276+50 TO STA. 280+00 (RT)
- L- STA. 280+04 TO STA. 288+49 (RT)
- L- STA. 288+51 TO STA. 290+96 (RT)
- L- STA. 278+32 TO STA. 281+37 (LT)



- L- STA. 267+50 TO STA. 278+28 (LT)
- L- STA. 286+50 TO STA. 289+14 (LT)
- L- STA. 289+17 TO STA. 291+63 (LT)



- L- STA. 281+41 TO STA. 286+50 (LT)



S = Ditch Slope		C Proposed Ditch	
Ditch Grade	L	Ditch Grade	L
0.0% To 2.0%	20'	Over 4.0% To 6.0%	40'
Over 2.0% To 4.0%	30'	Over 6.0%	50'

REVISIONS

8/17/99

F:\23\2015\01\Cadd\NR2514C\Roadway\Proj\NR2514C_RRBy_psh_24.dgn
3/23/2015 10:52:14 AM
S:\23\14\09\81301\81301.dwg