

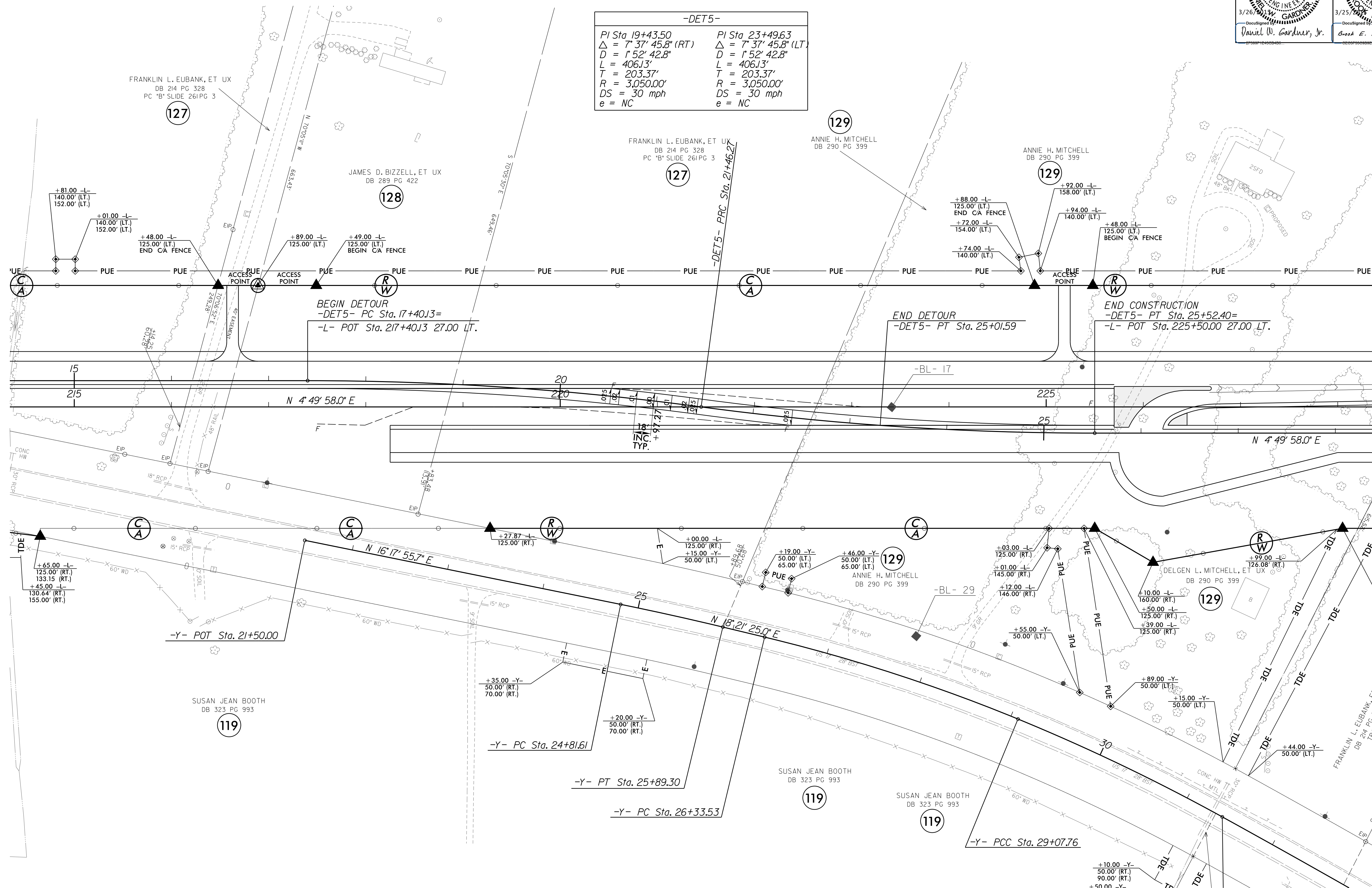
-DET5- DETOUR SHEET

NOTE: USE FOR CONSTRUCTION OF DETOUR ONLY

NAD 83/NSRS 2007

PROJECT REFERENCE NO. R-2514C	SHEET NO. 18B
RW SHEET NO.	HYDRAULICS ENGINEER
ROADWAY DESIGN ENGINEER	PROFESSIONAL SEAL 032581 BOB E. ANDERSON
PROFESSIONAL SEAL 033871 DANIEL W. GARDNER, JR.	PROFESSIONAL SEAL 032581 BOB E. ANDERSON
3/26/2015 DocuSign	3/25/2015 DocuSign
Daniel W. Gardner, Jr.	Bob E. Anderson

-DET5-	
PI Sta 19+43.50	PI Sta 23+49.63
$\Delta = 7^{\circ} 37' 45.8" (RT)$	$\Delta = 7^{\circ} 37' 45.8" (LT)$
$D = 1^{\circ} 52' 42.8"$	$D = 1^{\circ} 52' 42.8"$
$L = 406.13'$	$L = 406.13'$
$T = 203.37'$	$T = 203.37'$
$R = 3,050.00'$	$R = 3,050.00'$
$DS = 30 \text{ mph}$	$DS = 30 \text{ mph}$
$e = NC$	$e = NC$



NOTE: ALL DRIVES ARE 12' UNLESS NOTED OTHERWISE.
PAVE ALL DRIVES TO BACK OF TURNOUT RADIUS.
SEE SHEET 2A-5 FOR DRIVEWAY PROFILE DETAILS.

SEE SHEET 45 FOR -DET5- PROFILE

REVISIONS

8/17/99
3/18/2015
F:\825201\Cadd\2514C\Roadway\Proc\NR2514C_Rdwy_psh_18B.dgn