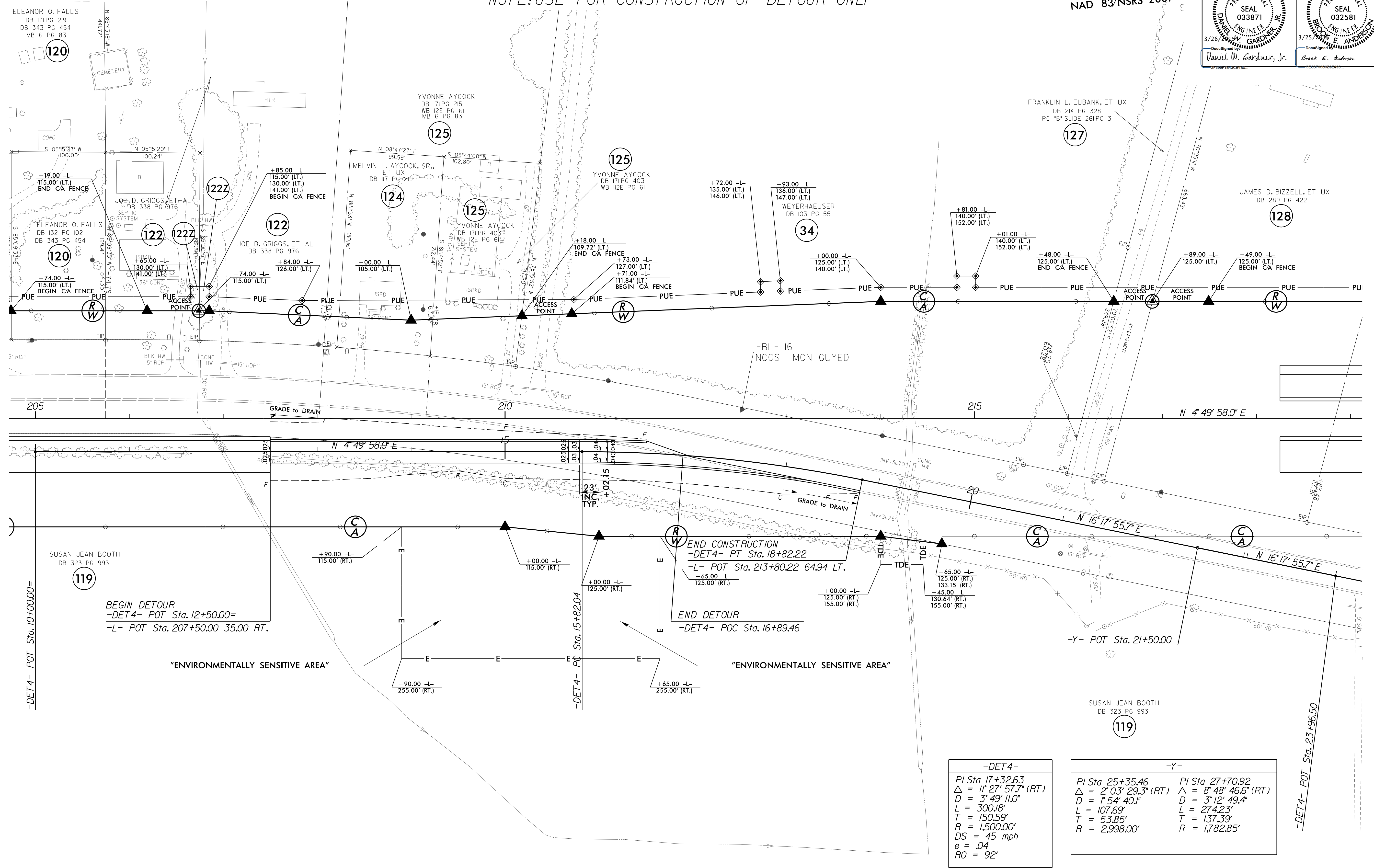


-DET4- DETOUR SHEET

NOTE: USE FOR CONSTRUCTION OF DETOUR ONLY

PROJECT REFERENCE NO. R-2514C	SHEET NO. 18A
RW SHEET NO.	
ROADWAY DESIGN ENGINEER SEAL 033871 DAVID W. GARDNER, JR. 3/26/2015	HYDRAULICS ENGINEER SEAL 032581 BROOK E. ANDERSON 3/25/2015

NAD 83/NSRS 2007



-DET4-

PI Sta 17+32.63
$\Delta = 1^\circ 27' 57.7''$ (RT)
D = 3' 49' 11.0"
L = 300.18'
T = 150.59'
R = 1,500.00'
DS = 45 mph
e = .04
RO = 92'

-Y-

PI Sta 25+35.46	PI Sta 27+70.92
$\Delta = 2^\circ 03' 29.3''$ (RT)	$\Delta = 8^\circ 48' 46.6''$ (RT)
D = 1' 54' 40.1"	D = 3' 12' 49.4"
L = 107.69'	L = 274.23'
T = 53.85'	T = 137.39'
R = 2,998.00'	R = 1,782.85'

NOTE: ALL DRIVES ARE 12' UNLESS NOTED OTHERWISE. PAVE ALL DRIVES TO BACK OF TURNOUT RADIUS. SEE SHEET 2A-5 FOR DRIVEWAY PROFILE DETAILS. SEE SHEET 45 FOR -DET4- PROFILE

8/17/99
 3/18/2015
 P:\825201\Cadd\2514C\Roadway\Proc\NR2514C_BBH.psh_18A.dgn
 11/11/15