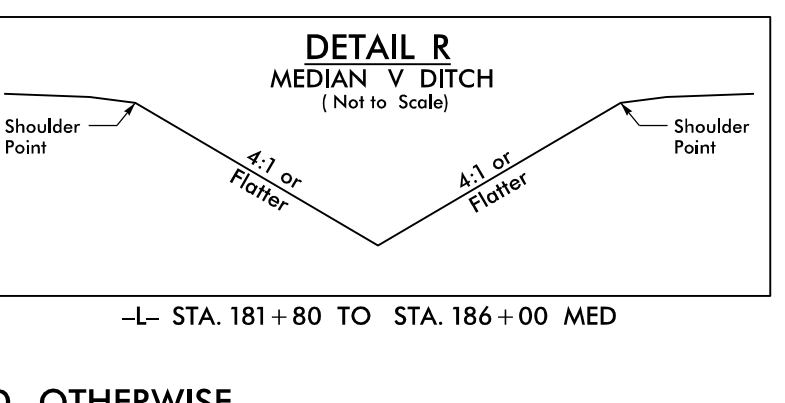
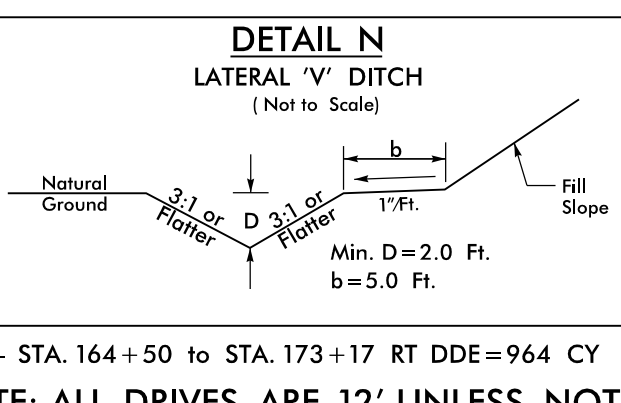
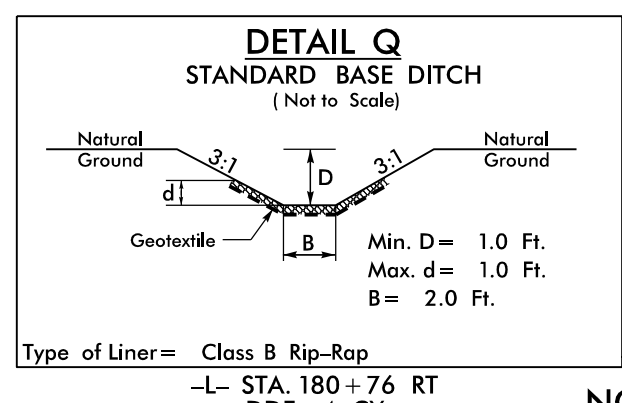
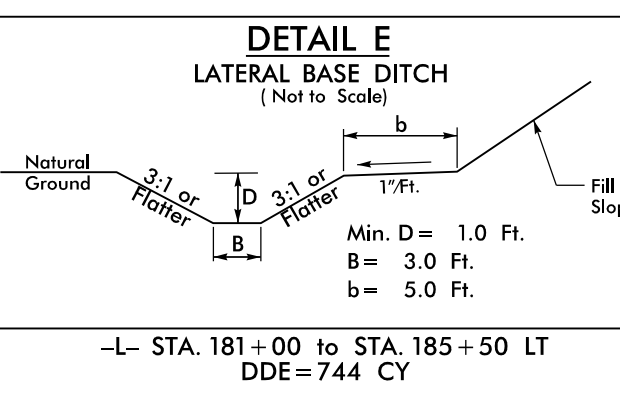
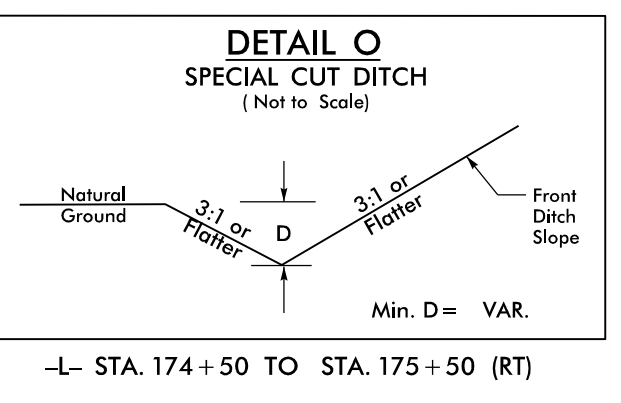
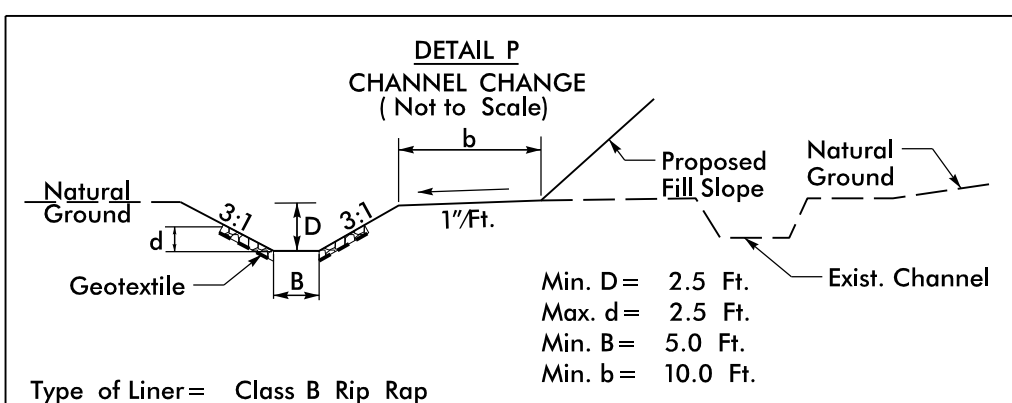
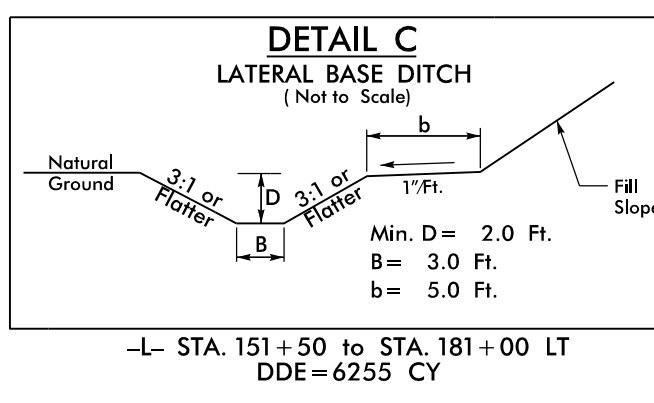
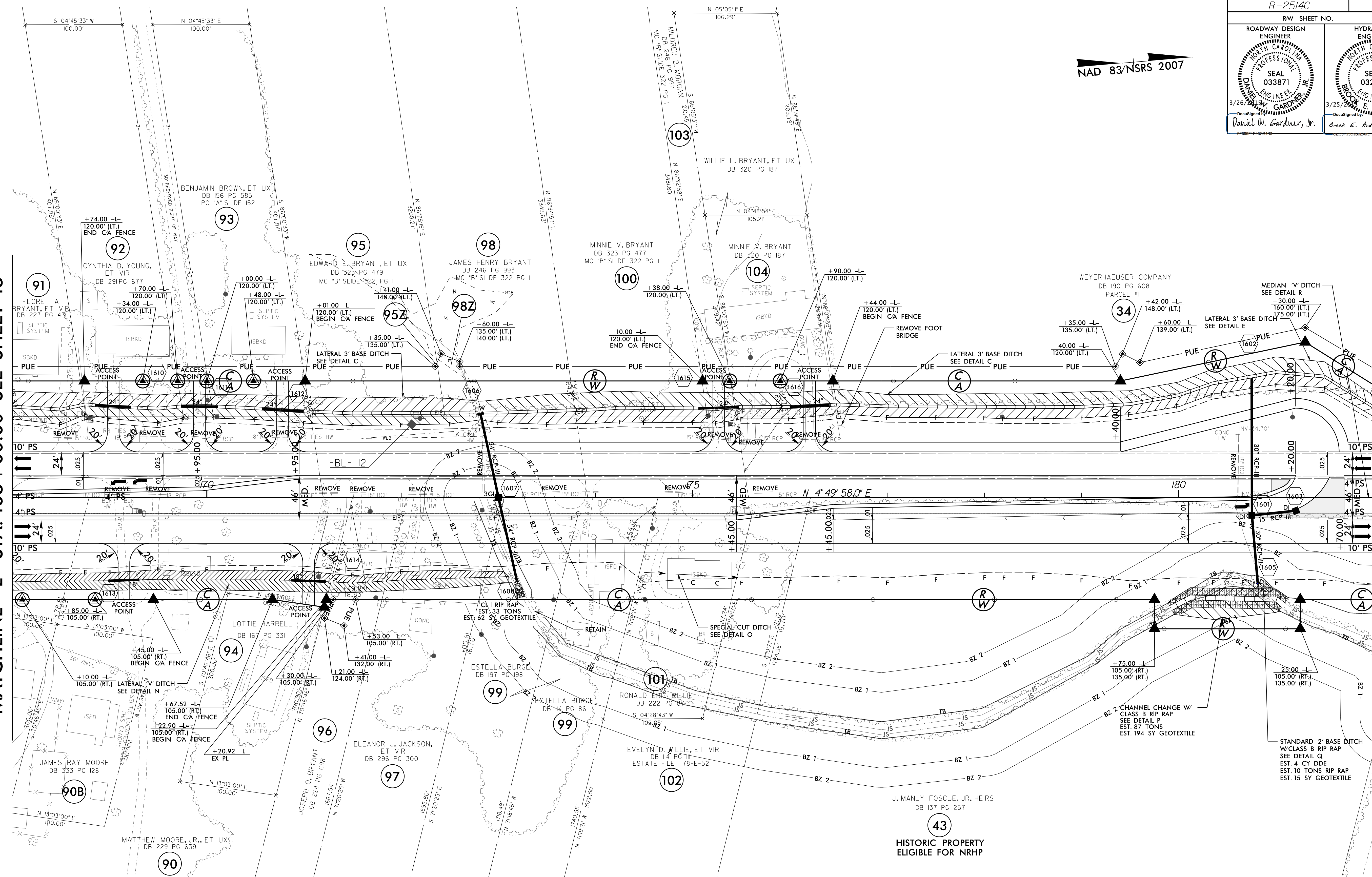


NAD 83/NSRS 2007

MATCHLINE -L- STA. 168 + 00.00 SEE SHEET 15

MATCHLINE -L- STA. 182 + 00.00 SEE SHEET 17



NOTE: ALL DRIVES ARE 12' UNLESS NOTED OTHERWISE.  
PAVE ALL DRIVES TO BACK OF TURNOUT RADIUS.  
SEE SHEET 2A-5 FOR DRIVEWAY PROFILE DETAILS.

SEE SHEET 35 FOR -L- PROFILE

REVISIONS

8/17/99  
F:\320\2514C\Roadway\Proj\NR2514C\_Roadway\psh\_16.dgn  
3/26/2015 10:46:46 AM