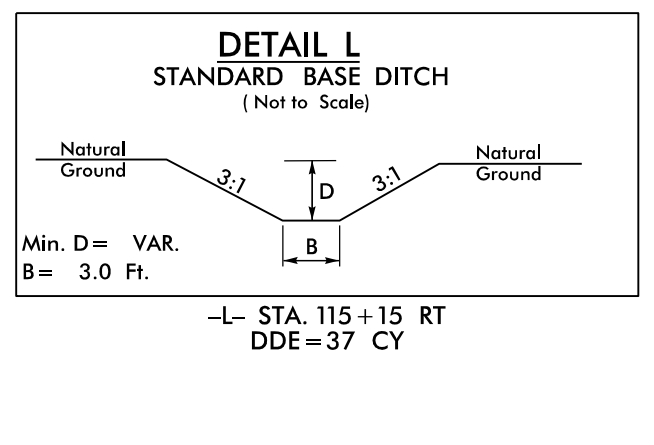
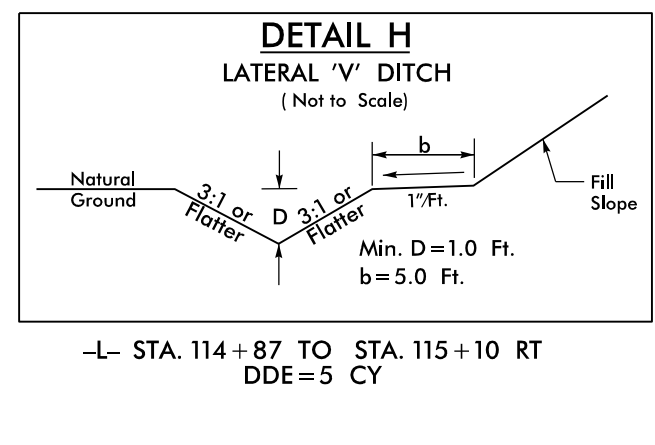
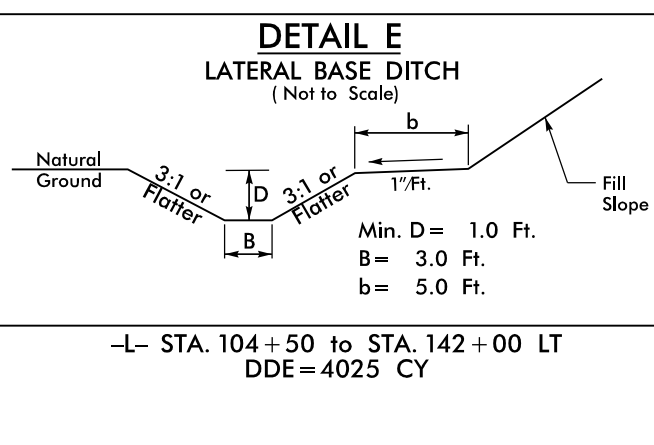
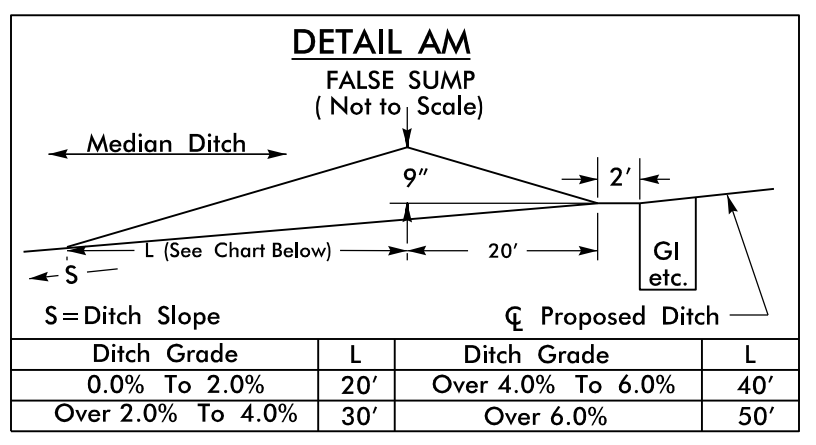
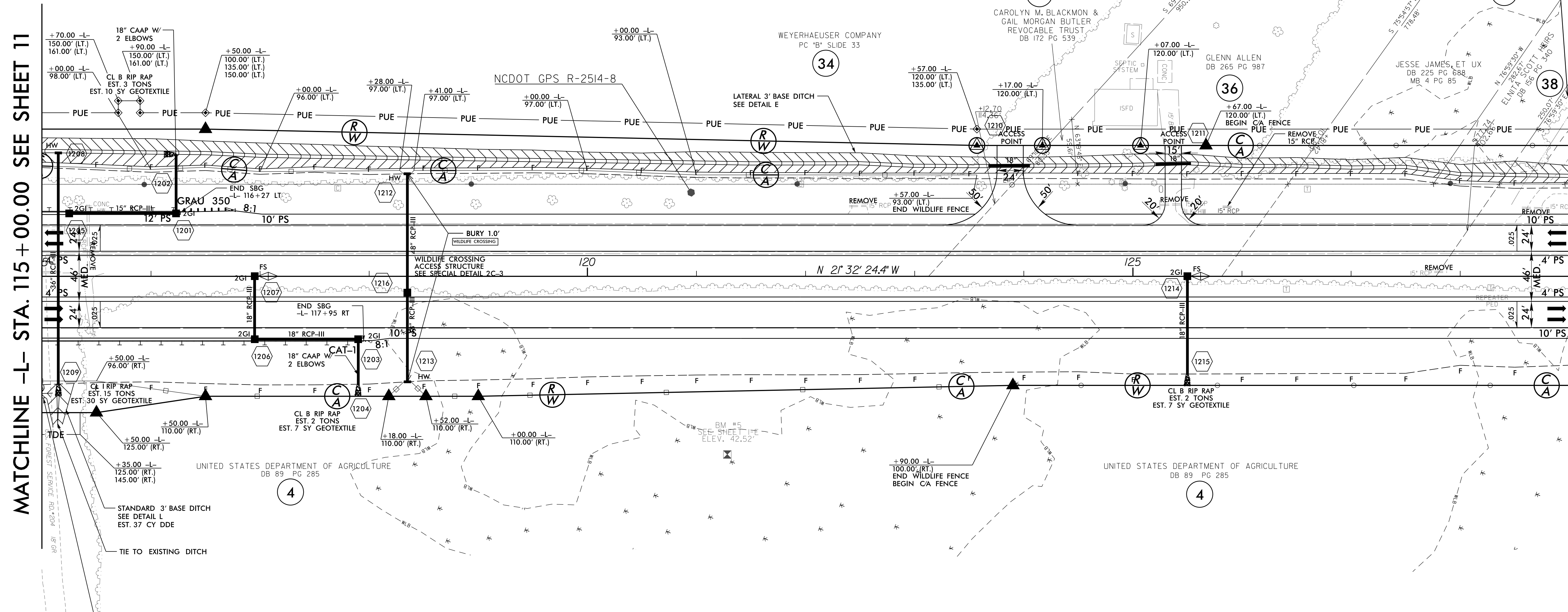


NAD 83/NRS 2007

MATCHLINE -L- STA. 115 + 00.00 SEE SHEET 11

MATCHLINE -L- STA. 129 + 00.00 SEE SHEET 13



NOTE: SBG - "SHOULDER BERM GUTTER"
ALL DRIVES ARE 12' UNLESS NOTED OTHERWISE.
PAVE ALL DRIVES TO BACK OF TURNOUT RADII.
SEE SHEET 2A-5 FOR DRIVEWAY PROFILE DETAILS.
SEE SHEET 2C-1 FOR WILDLIFE FENCE DETAIL.

SEE SHEET 33 FOR -L- PROFILE

REVISIONS

8/17/99
P:\2015\201501\Roadway\Proj\N2514C\RD\Hy_psh_12.dgn
3/23/2015 10:22:01 AM