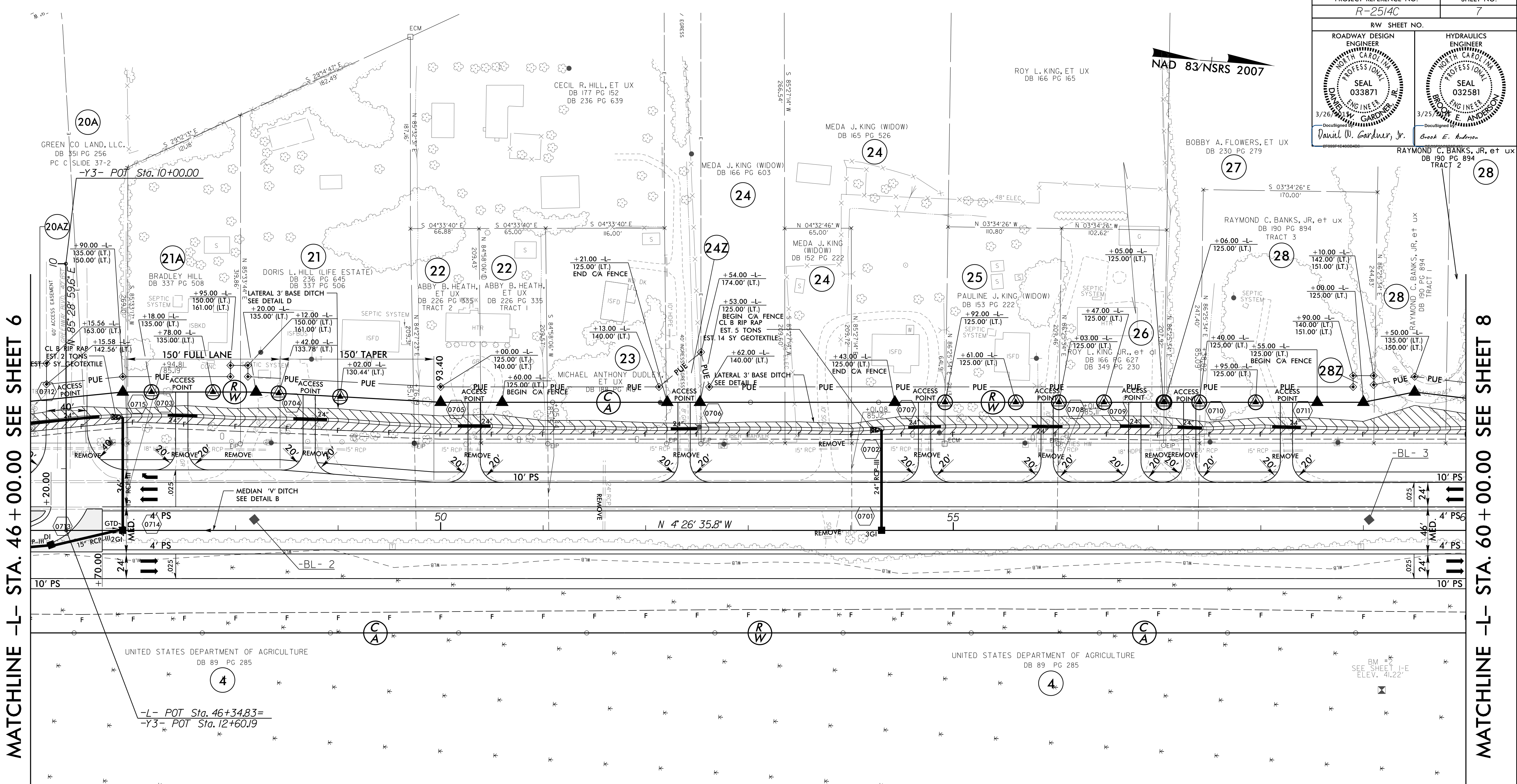


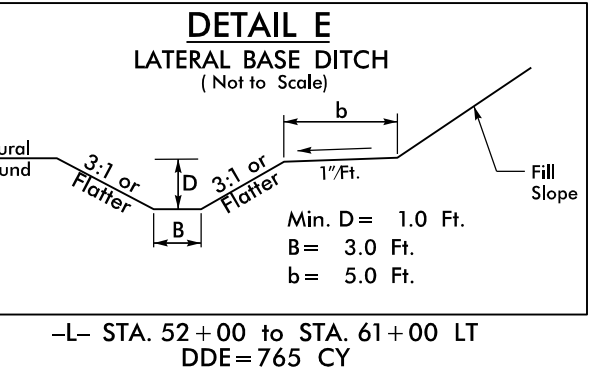
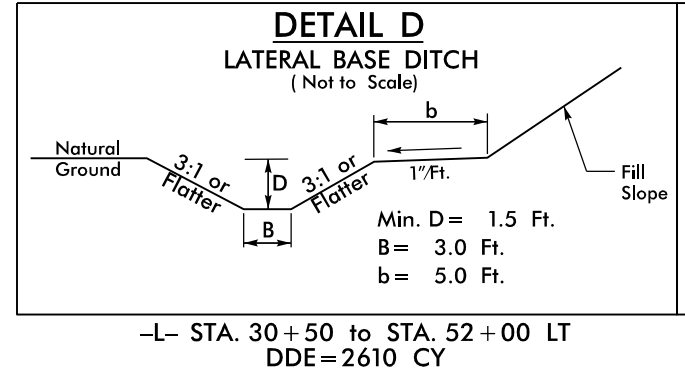
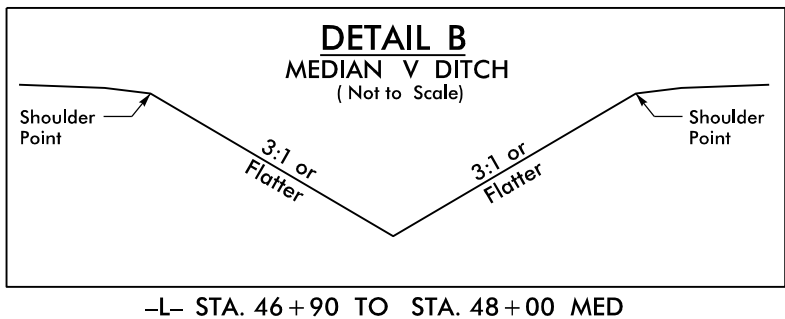
NAD 83/NSRS 2007



MATCHLINE -L- STA. 46 + 00.00 SEE SHEET 6

MATCHLINE -L- STA. 60 + 00.00 SEE SHEET 8

REVISIONS



NOTE: ALL DRIVES ARE 12' UNLESS NOTED OTHERWISE.
PAYE ALL DRIVES TO BACK OF TURNOUT RADIUS.
SEE SHEET 2A-5 FOR DRIVEWAY PROFILE DETAILS.

SEE SHEET 30 FOR -L- PROFILE

8/17/99
 3/18/2015
 P:\852501\Cadd\2514C\Roadway\Proj\NR2514C_Roadway.psh_07.dgn
 10:11 AM