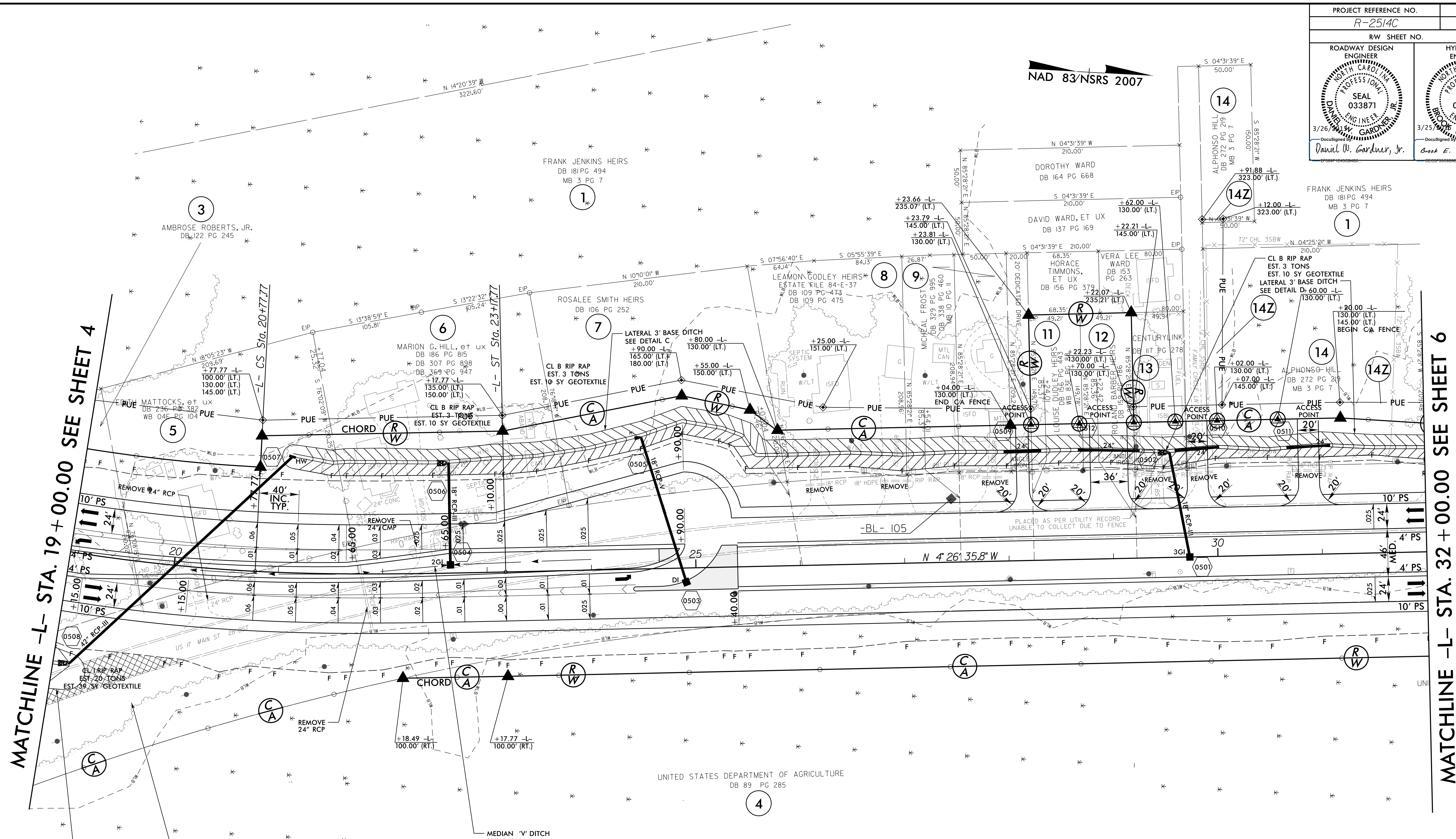


FRANK JENKINS HEIRS
DB 181 PG 494
MB 3 PG 7

NAD 83/NSRS 2007

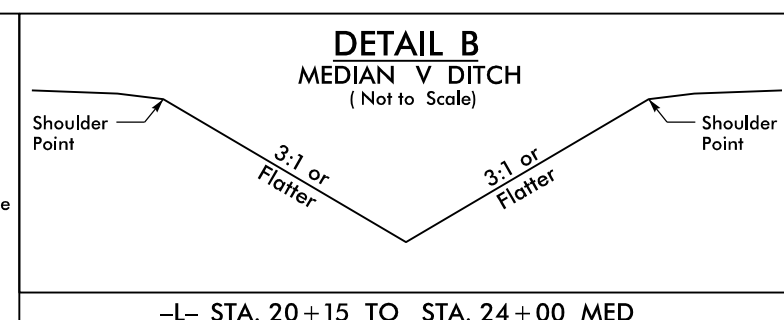
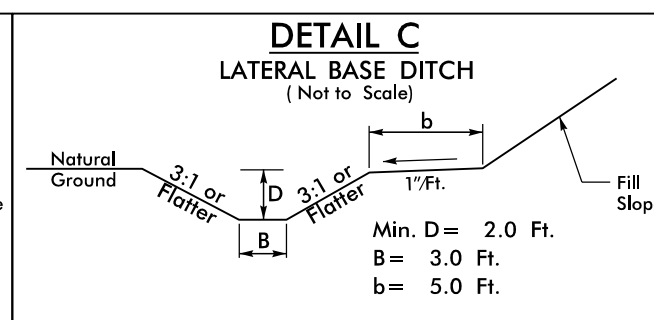
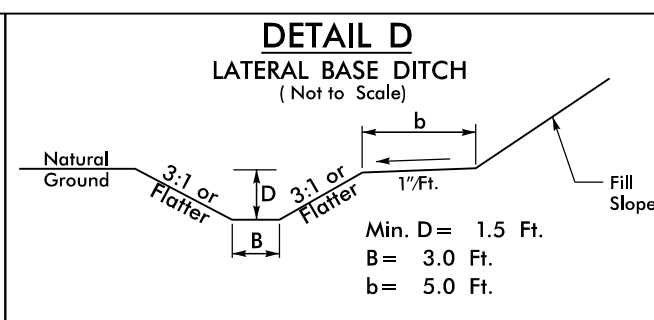
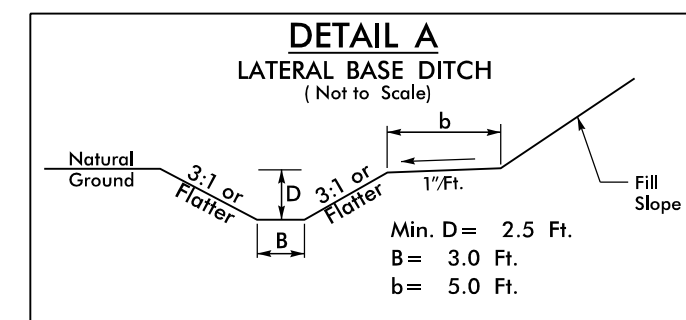


MATCHLINE -L- STA. 19 + 00.00 SEE SHEET 4

MATCHLINE -L- STA. 32 + 00.00 SEE SHEET 6

REVISIONS

-L-	
$PI\ Sta\ 16+95.31$	$Pls\ Sta\ 21+57.81$
$\Delta = 27^{\circ}14'57.6\" (LT)$	$\Theta s = 4^{\circ}11'32.5\"$
$D = 3^{\circ}29'37.1\"$	$Ls = 240.00'$
$L = 779.97'$	$LT = 160.04'$
$T = 397.51'$	$ST = 80.04'$
$R = 1,640.00'$	
$SE = .06$	
$RO = 240'$	



-L- STA. 17+50 to STA. 19+15 RT
DDE=569 CY

-L- STA. 30+50 to STA. 52+00 LT
DDE=2610 CY

-L- STA. 21+10 to STA. 30+50 LT
DDE=2251 CY

NOTE: ALL DRIVES ARE 12' UNLESS NOTED OTHERWISE.
PAVE ALL DRIVES TO BACK OF TURNOUT RADIUS.
SEE SHEET 2A-5 FOR DRIVEWAY PROFILE DETAILS

SEE SHEET 29 FOR -L- PROFILE

8/17/99
3/18/2015
P:\825201\Cadd\2514C\Roadway\Proj\2514C_Rdwy_psh_05.dgn