

5/28/99

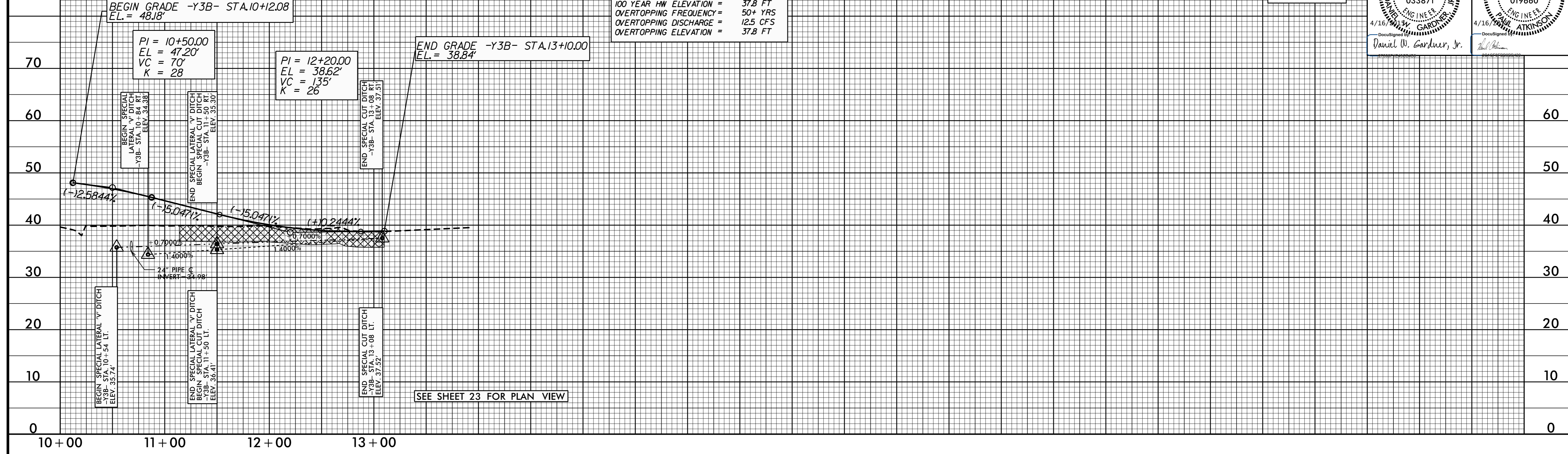
PROJECT REFERENCE NO. R-2514B	SHEET NO. 40
ROADWAY DESIGN ENGINEER DANIEL W. GARDNER, JR. SEAL 033871 4/16/2015	HYDRAULICS ENGINEER PAUL ATKINSON SEAL 019660 4/16/2015

-Y3B-

PIPE HYDRAULIC DATA
-Y3B- Sta.10+69

DRAINAGE AREA	=	3.52 AC
DESIGN FREQUENCY	=	25 YRS
DESIGN DISCHARGE	=	11 CFS
DESIGN HW ELEVATION	=	37.6 FT
100 YEAR DISCHARGE	=	13 CFS
100 YEAR HW ELEVATION	=	37.8 FT
OVERTOPPING FREQUENCY	=	50+ YRS
OVERTOPPING DISCHARGE	=	12.5 CFS
OVERTOPPING ELEVATION	=	37.8 FT

LEFT DITCH - - - - -
RIGHT DITCH - - - - -



16-APR-2015 09:45 \\p2514b_rdy.pl-40.dgn

-Y3C-

PIPE HYDRAULIC DATA
-Y3C- Sta.12+77

DRAINAGE AREA	=	1.7 AC
DESIGN FREQUENCY	=	25 YRS
DESIGN DISCHARGE	=	5.4 CFS
DESIGN HW ELEVATION	=	35.4 FT
100 YEAR DISCHARGE	=	6.4 CFS
100 YEAR HW ELEVATION	=	35.6 FT
OVERTOPPING FREQUENCY	=	25+/- YRS
OVERTOPPING DISCHARGE	=	5.6 CFS
OVERTOPPING ELEVATION	=	35.4 FT

PIPE HYDRAULIC DATA
-Y3C- Sta.16+28

DRAINAGE AREA	=	0.64 AC
DESIGN FREQUENCY	=	25 YRS
DESIGN DISCHARGE	=	2.6 CFS
DESIGN HW ELEVATION	=	33.1 FT
100 YEAR DISCHARGE	=	3.0 CFS
100 YEAR HW ELEVATION	=	33.2 FT
OVERTOPPING FREQUENCY	=	500+ YRS
OVERTOPPING DISCHARGE	=	2.0 CFS
OVERTOPPING ELEVATION	=	34.9 FT

