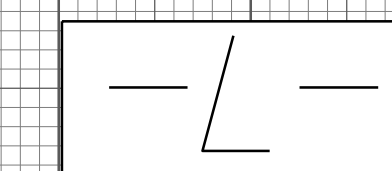
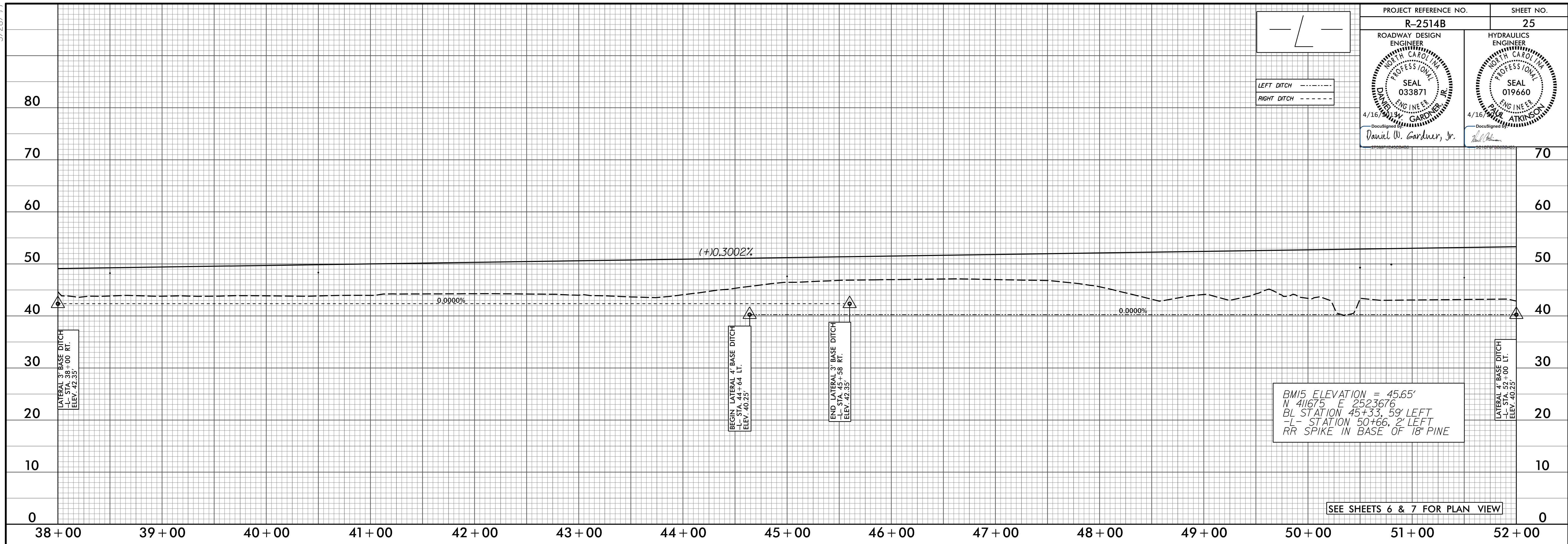


5/28/99



LEFT DITCH - - - - -
RIGHT DITCH - - - - -

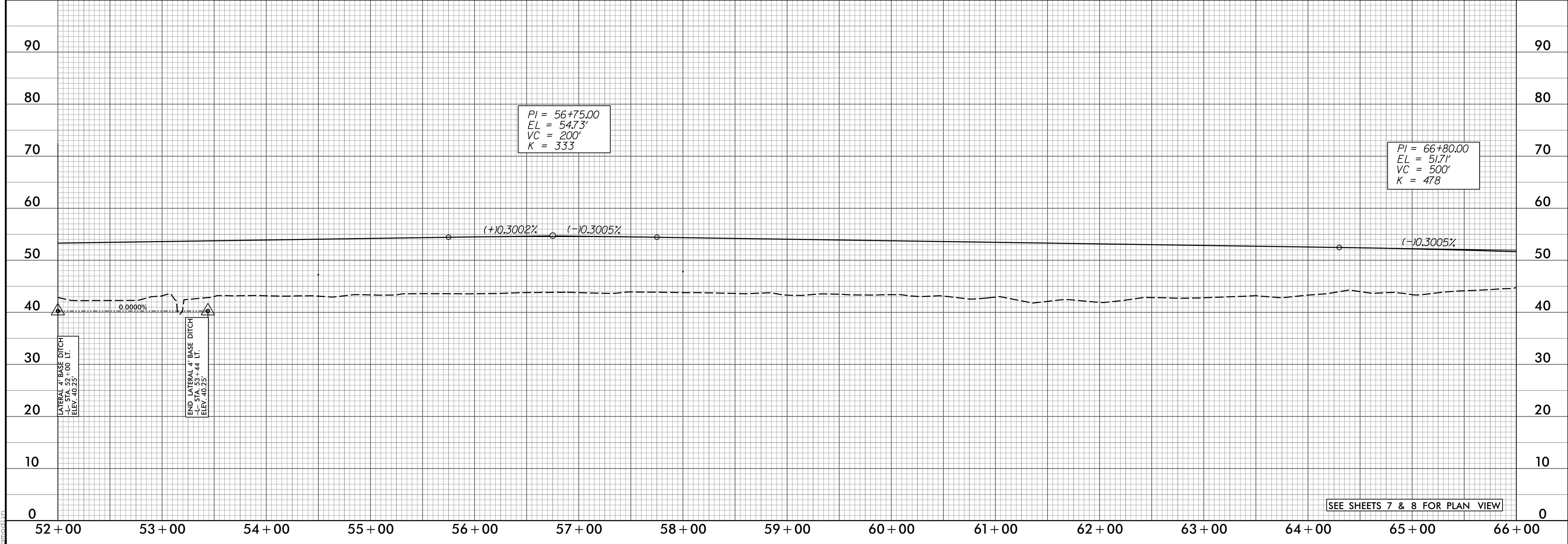
PROJECT REFERENCE NO. R-2514B	SHEET NO. 25
ROADWAY DESIGN ENGINEER DANIEL W. GARDNER, JR. SEAL 033871 4/16/99	HYDRAULICS ENGINEER PAUL W. ATKINSON SEAL 019660 4/16/99



BMS ELEVATION = 45.65'
 N 41675 E 2523676
 BL STATION 45+33.59' LEFT
 LL STATION 50+66.2' LEFT
 RR SPIKE IN BASE OF 18" PINE

SEE SHEETS 6 & 7 FOR PLAN VIEW

P:\26\2015\01\Cadd\2514B\Roadway\Proj\R2514B_rdy.plt_25.dgn



PI = 56+75.00
 EL = 54.73'
 VC = 200'
 K = 333

PI = 66+80.00
 EL = 51.71'
 VC = 500'
 K = 478

SEE SHEETS 7 & 8 FOR PLAN VIEW