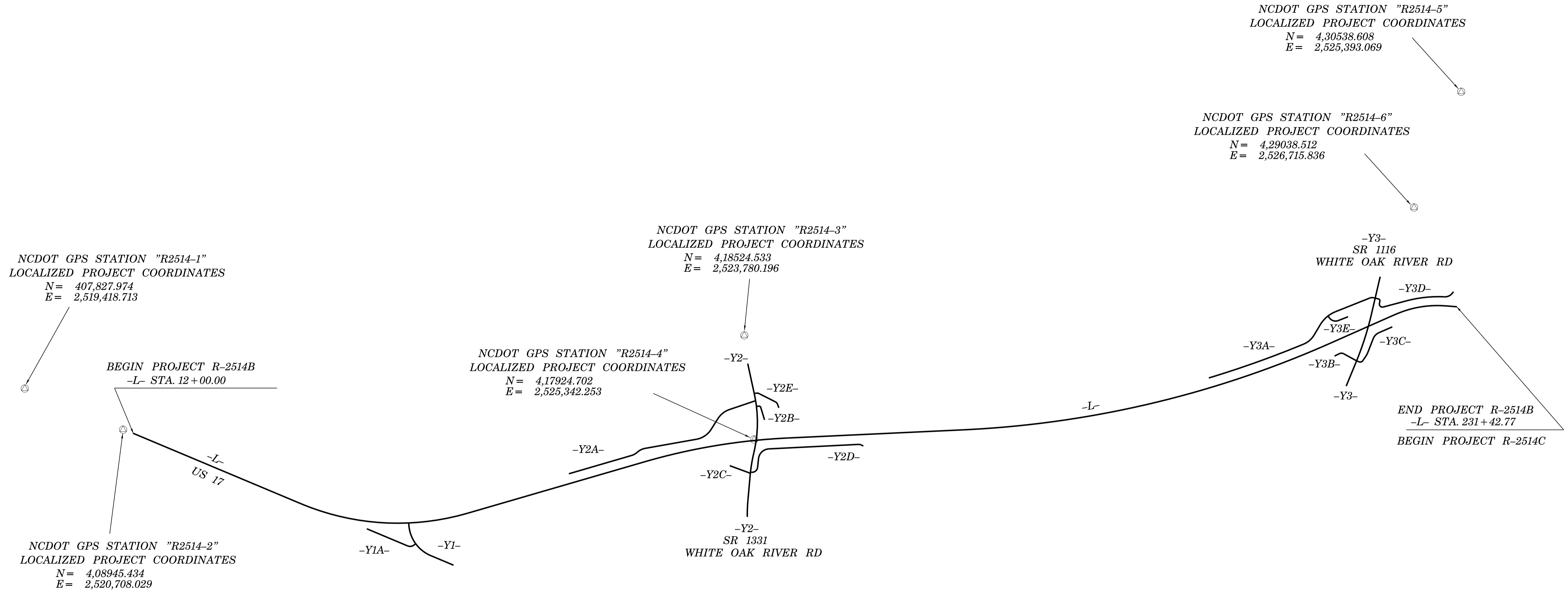


6/2/09

# SURVEY CONTROL SHEET R-2514B

PROJECT REFERENCE NO. R-2514B	SHEET NO. 1C-1
Location and Surveys	



### NOTES:

1. THE CONTROL DATA FOR THIS PROJECT CAN BE FOUND ELECTRONICALLY BY SELECTING NCDOT PROJECT CONTROL DATA AT:  
[HTTPS://CONNECT.NCDOT.GOV/RESOURCES/LOCATION/PAGES/DEFAULT.ASPX](https://connect.ncdot.gov/resources/location/pages/default.aspx)

THE FILES TO BE FOUND ARE AS FOLLOWS:

- R2514B\_LS\_CONTROL.TXT
- R2514\_LS\_GPSCALIB.HTML
- R2514\_LS\_WGS84.TXT
- R2514\_LS\_LOCAL.TXT

- ⊙ INDICATES GEODETIC CONTROL MONUMENTS USED OR SET FOR HORIZONTAL PROJECT CONTROL BY THE NCDOT LOCATION AND SURVEYS UNIT.  
PROJECT CONTROL ESTABLISHED USING GLOBAL POSITIONING SYSTEM.  
NETWORK ESTABLISHED FROM NGS ONLINE POSITIONING SERVICE (OPUS)  
SEE GPS CALIBRATION SHEET FOR HORIZONTAL AND VERTICAL COORDINATE VALUES.  
IF FURTHER INFORMATION IS NEEDED, PLEASE CONTACT THE LOCATION AND SURVEYS UNIT.

**DATUM DESCRIPTION**

THE LOCALIZED COORDINATE SYSTEM DEVELOPED FOR THIS PROJECT IS BASED ON THE STATE PLANE COORDINATES ESTABLISHED BY NCDOT FOR MONUMENT "R2514-9"

WITH NAD 83/NSRS 2007 STATE PLANE GRID COORDINATES OF  
NORTHING: 451335.4480 (++) EASTING: 2526812.771 (++)  
ELEVATION: 38.950 (++)

THE AVERAGE COMBINED GRID FACTOR USED ON THIS PROJECT (GROUND TO GRID) IS: 0.999887960

THE N.C. LAMBERT GRID BEARING AND LOCALIZED HORIZONTAL GROUND DISTANCE FROM "GPS R2514-9" TO -L- STATION 12+00.00 IS  
S08°03'00.79"W 42,690.224'

ALL LINEAR DIMENSIONS ARE LOCALIZED HORIZONTAL DISTANCES  
VERTICAL DATUM USED IS NAVD 88

NOTE: DRAWING NOT TO SCALE

16-MAR-2015 07:19 R2514B\_LS\_1C-1.dgn