

**This electronic collection of documents is provided
for the convenience of the user
and is Not a Certified Document –**

**The documents contained herein were originally issued
and sealed by the individuals whose names and license
numbers appear on each page, on the dates appearing
with their signature on that page.**

**This file or an individual page
shall not be considered a certified document.**

TIP PROJECT: U-2524BC

CONTRACT: C203290

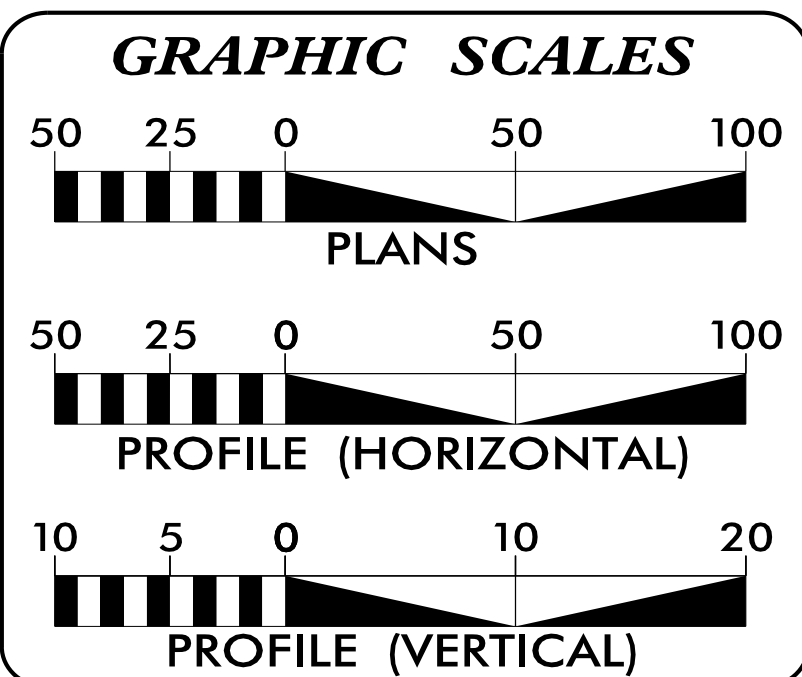
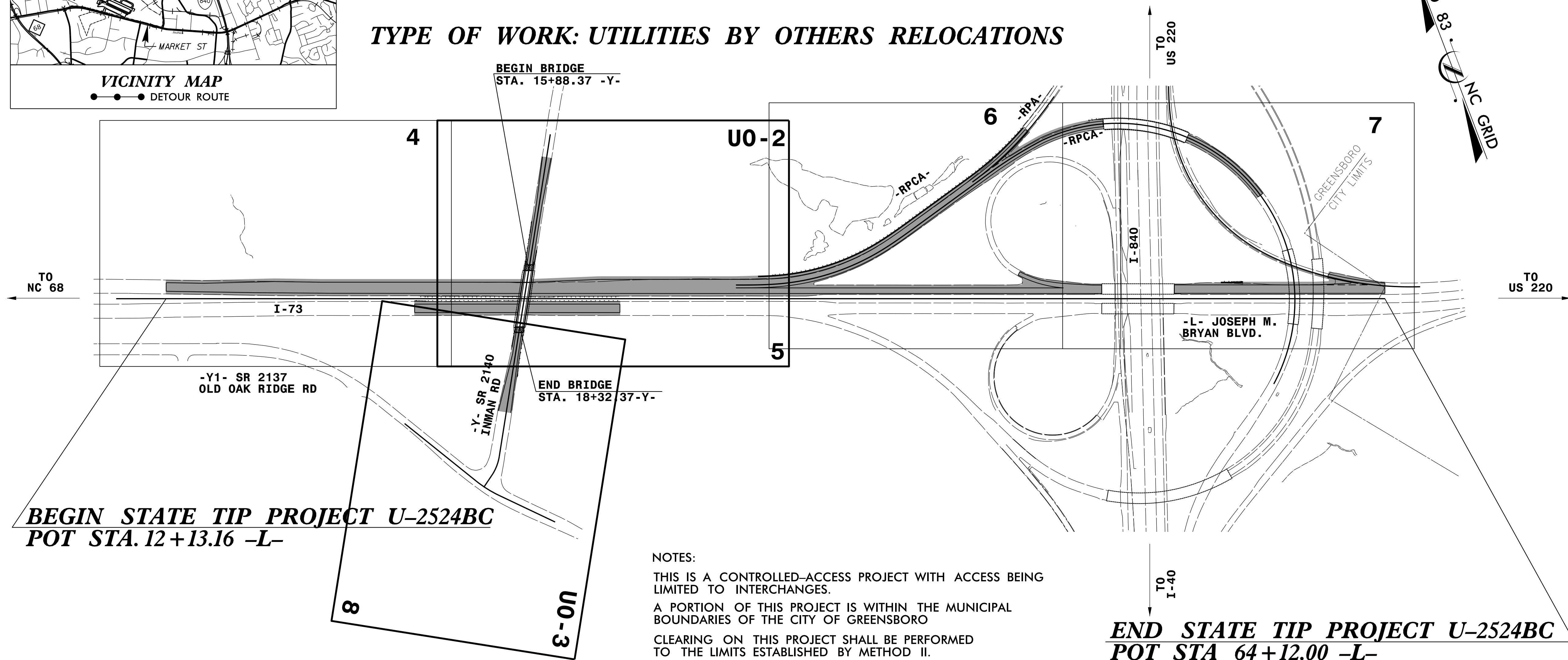
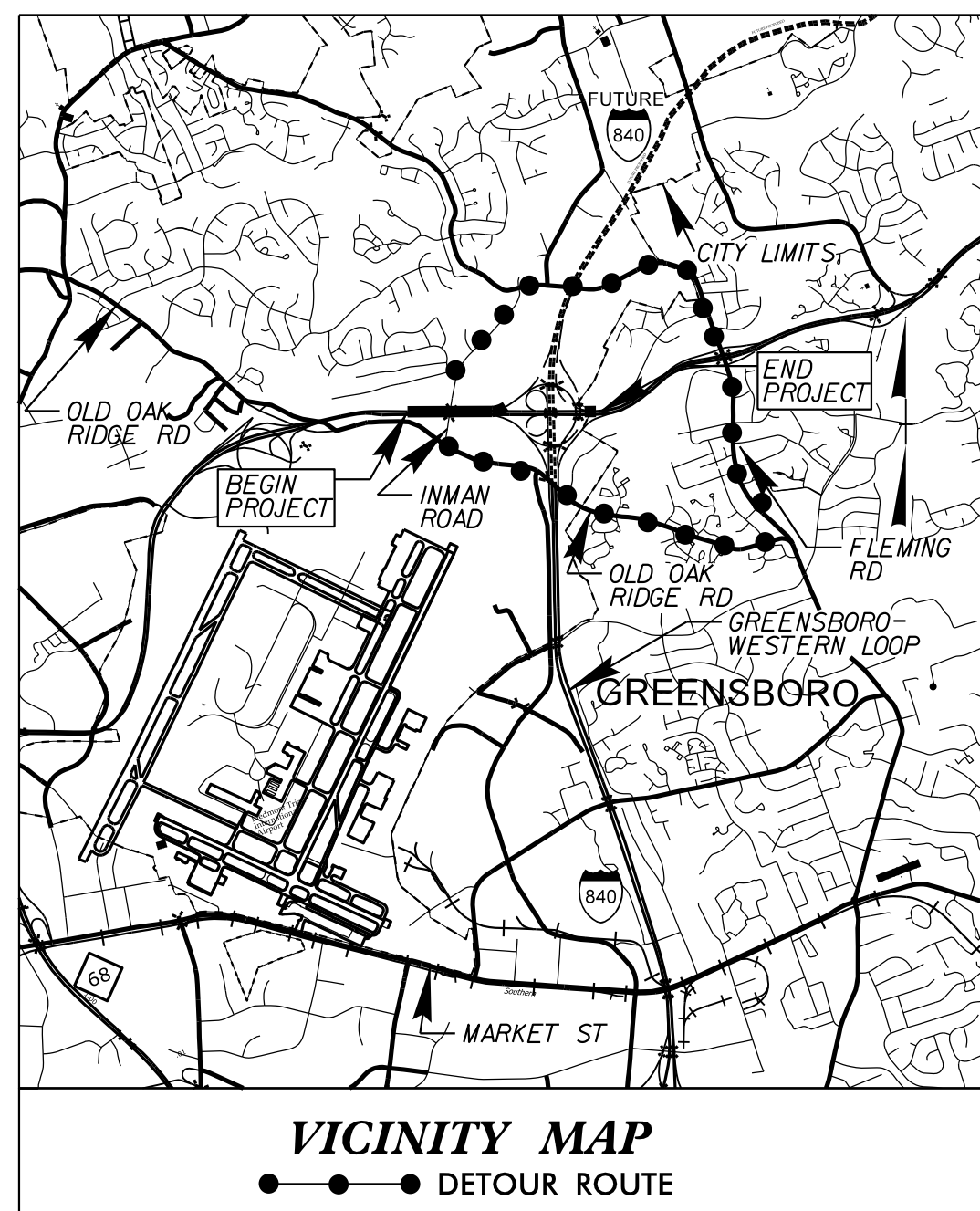
T.I.P. NO.	SHEET NO.
U-2524BC	UO-1

STATE OF NORTH CAROLINA
DIVISION OF HIGHWAYS

**UTILITIES BY OTHERS PLANS
GUILFORD COUNTY**

**LOCATION: GREENSBORO WESTERN LOOP (I-73 CONNECTOR) FROM I-73/I-840
TO SR 2085 (JOSEPH BRYAN BLVD) INTERCHANGE**

TYPE OF WORK: UTILITIES BY OTHERS RELOCATIONS



INDEX OF SHEETS

SHEET NO.	DESCRIPTION
UO-1	TITLE SHEET
UO-2 THRU UO-3	UTILITY BY OTHERS PLAN SHEETS

UTILITY OWNERS ON PROJECT

(A) DUKE ENERGY - POWER (DISTRIBUTION)
(B) AT&T - TELEPHONE
(C) TIME WARNER CABLE - CATV

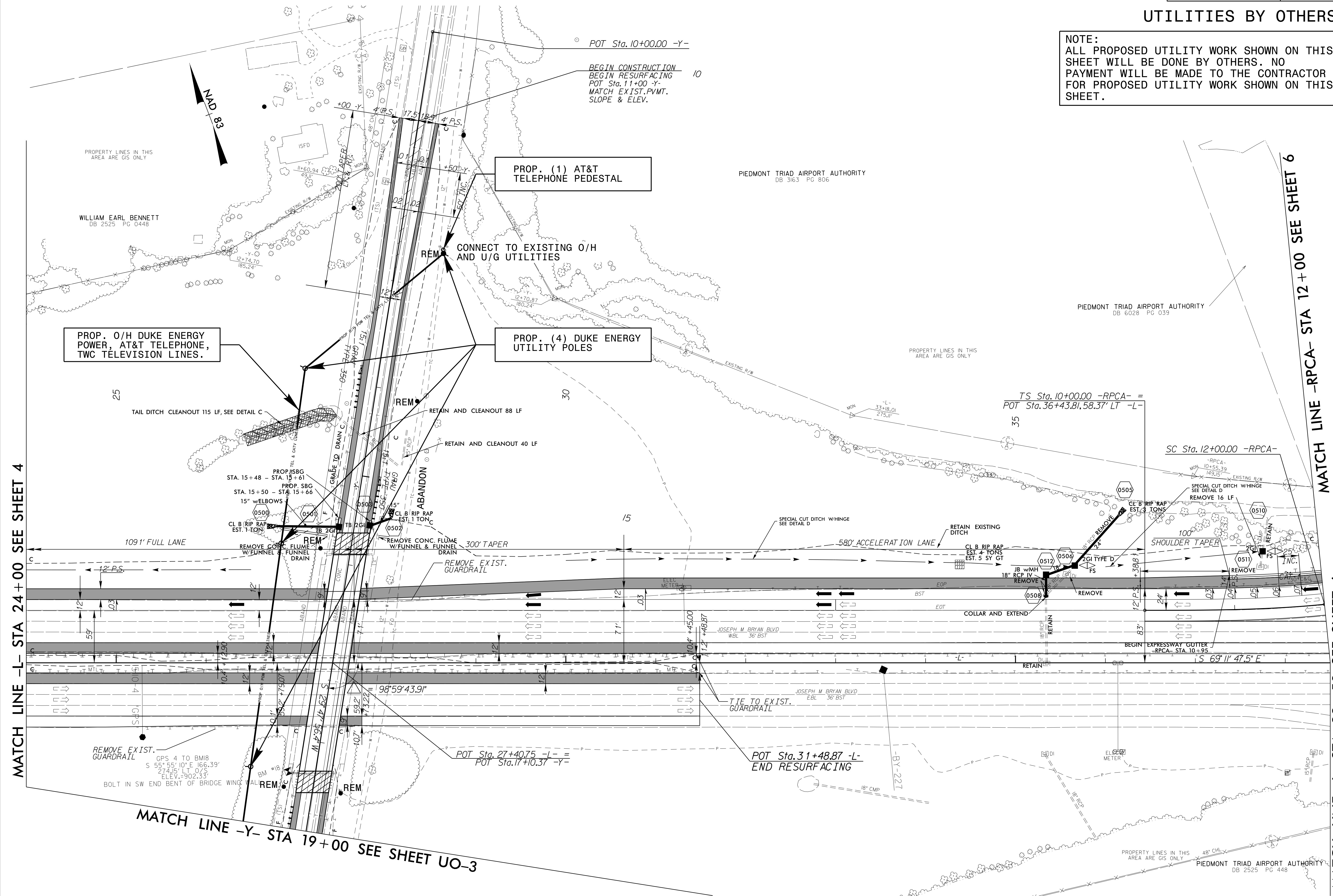
PREPARED IN THE OFFICE OF:
**DIVISION OF HIGHWAYS
UTILITIES UNIT
UTILITIES ENGINEERING**

1555 MAIL SERVICES CENTER
RALEIGH, NC 27699-1555
PHONE (919) 707-6690
FAX (919) 250-4151

Roger Worthington, P.E. UTILITIES SECTION ENGINEER
Steve McKee, P.E. UTILITIES SQUAD LEADER PROJECT ENGINEER
Donald Proper UTILITIES PROJECT DESIGN ENGINEER

UTILITIES BY OTHERS

NOTE:
 ALL PROPOSED UTILITY WORK SHOWN ON THIS SHEET WILL BE DONE BY OTHERS. NO PAYMENT WILL BE MADE TO THE CONTRACTOR FOR PROPOSED UTILITY WORK SHOWN ON THIS SHEET.



MATCH LINE -L- STA 24+00 SEE SHEET 4

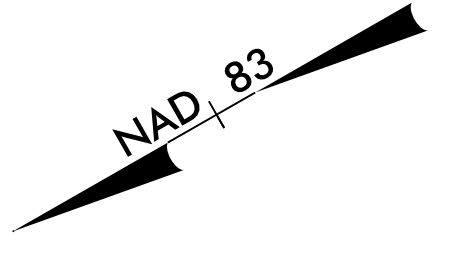
MATCH LINE -Y- STA 19+00 SEE SHEET UO-3

MATCH LINE -RPCA- STA 12+00 SEE SHEET 6

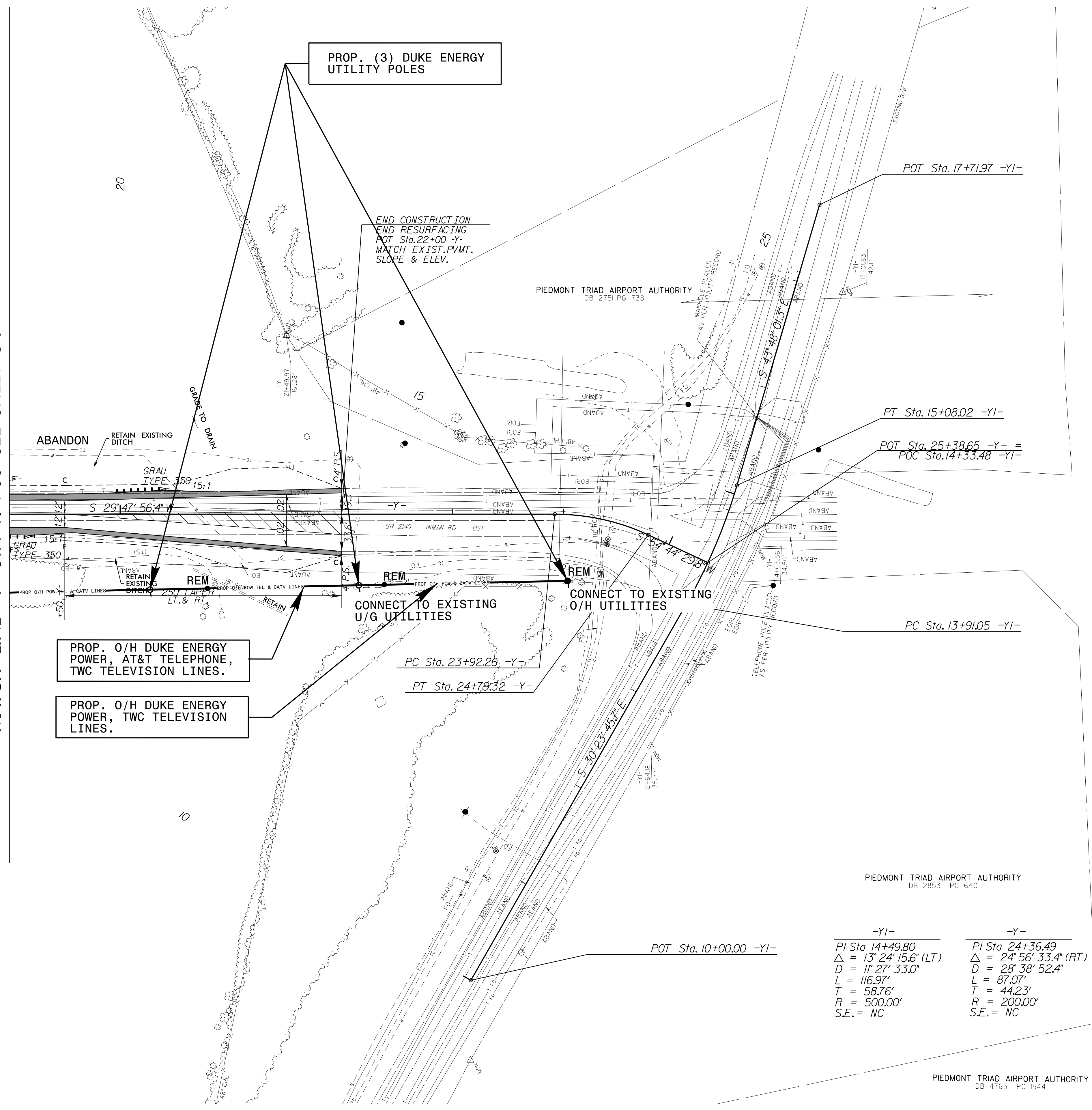
MATCH LINE -L- STA 38+50 SEE SHEET 6

UTILITIES BY OTHERS

NOTE:
ALL PROPOSED UTILITY WORK SHOWN ON THIS SHEET WILL BE DONE BY OTHERS. NO PAYMENT WILL BE MADE TO THE CONTRACTOR FOR PROPOSED UTILITY WORK SHOWN ON THIS SHEET.



MATCH LINE -Y- STA 19+00 SEE SHEET UO-2



-YI-	-Y-
PI Sta 14+49.80	PI Sta 24+36.49
$\Delta = 13^{\circ} 24' 15.6" (LT)$	$\Delta = 24^{\circ} 56' 33.4" (RT)$
$D = 11^{\circ} 27' 33.0"$	$D = 28^{\circ} 38' 52.4"$
$L = 116.97'$	$L = 87.07'$
$T = 58.76'$	$T = 44.23'$
$R = 500.00'$	$R = 200.00'$
$S.E. = NC$	$S.E. = NC$

PIEDMONT TRIAD AIRPORT AUTHORITY
DB 4765 PG 1544