

**NOTES**

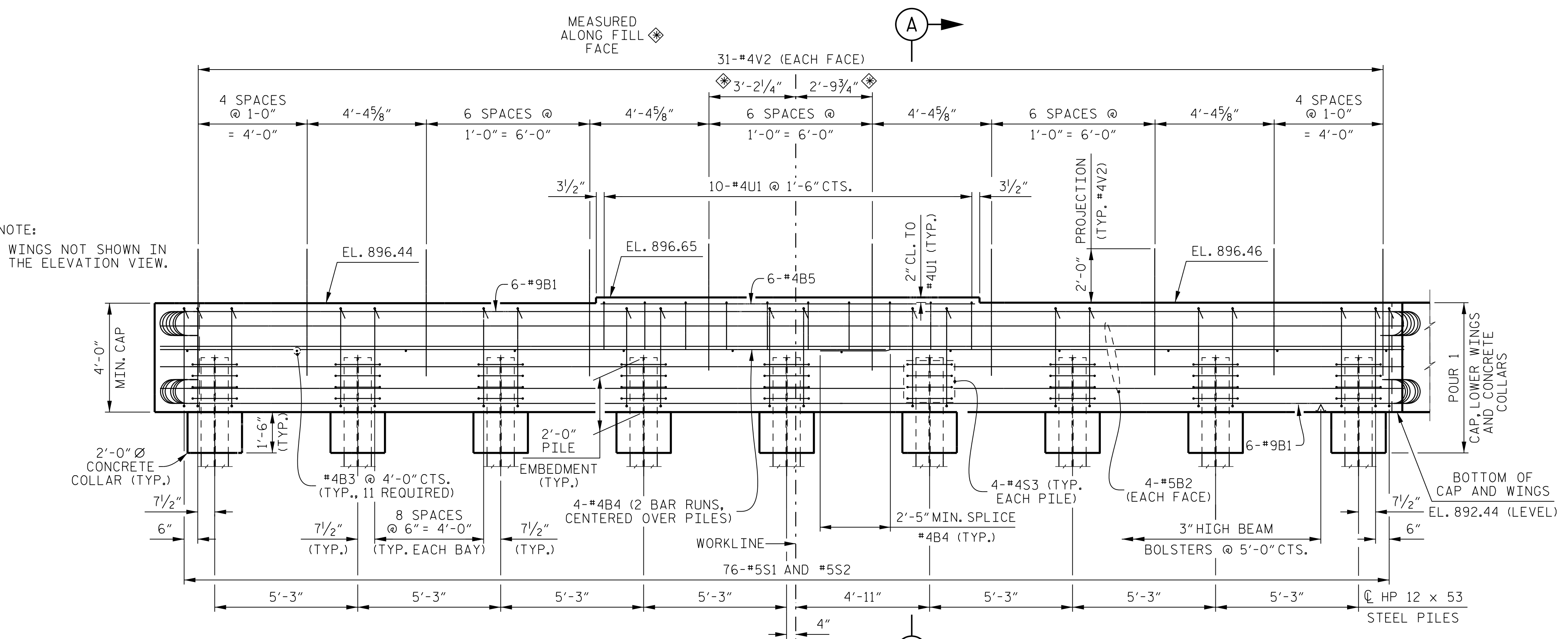
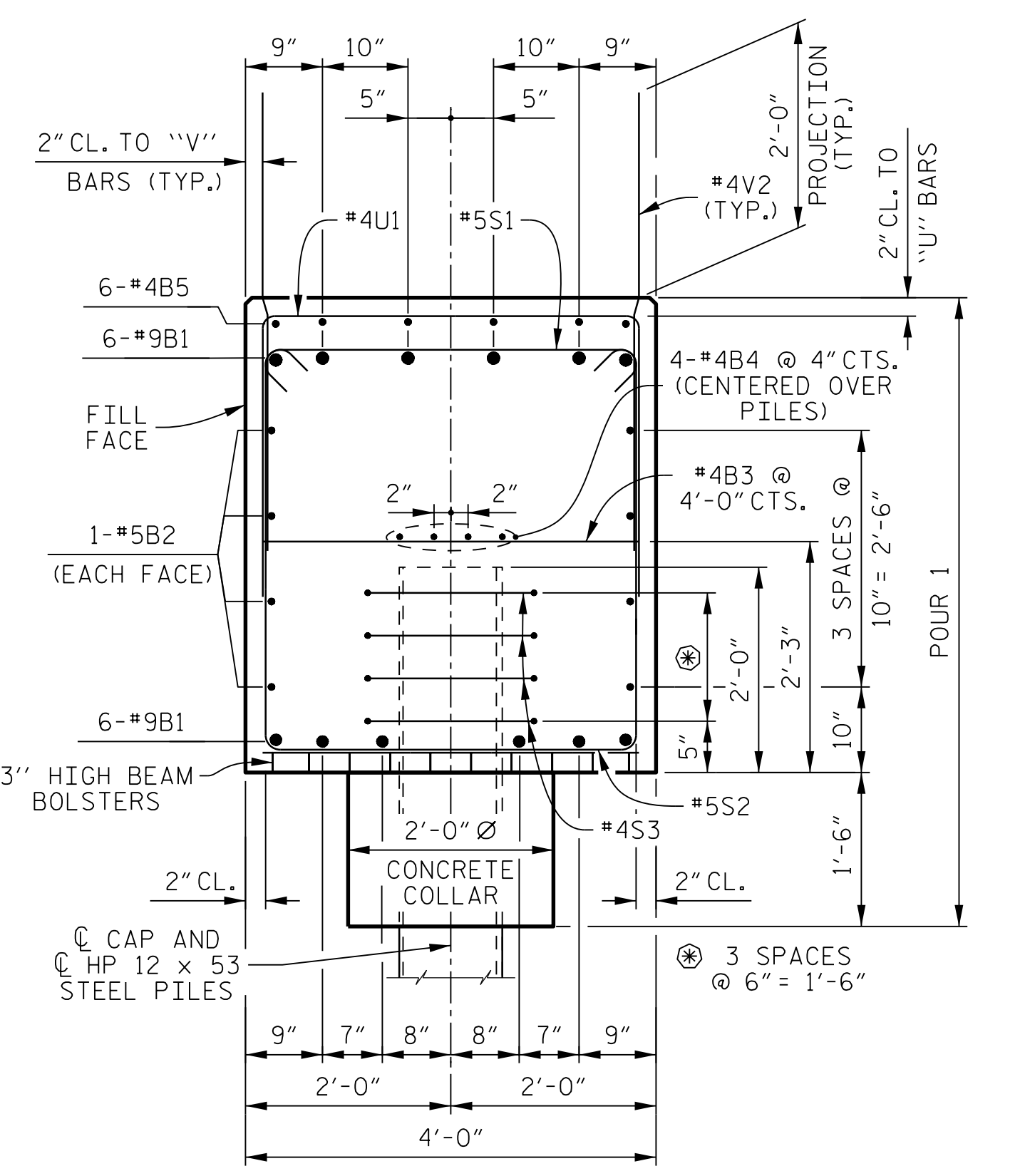
THE UPPER PORTION OF THE INTEGRAL END BENT CAP AND THE UPPER PORTION OF THE WINGS SHALL BE POURED WITH THE SUPERSTRUCTURE. SEE SUPERSTRUCTURE PLANS

STIRRUPS AND "U" BARS IN CAP MAY BE SHIFTED AS NECESSARY TO CLEAR #4V2 BARS.

THE TOP SURFACE OF THE END BENT CAP AND WINGS, EXCEPT THE BEARING AREA, SHALL BE RAKED TO A DEPTH OF 1/4".

FOR PILE SPLICE DETAILS, SEE SHEET 2 OF 2.

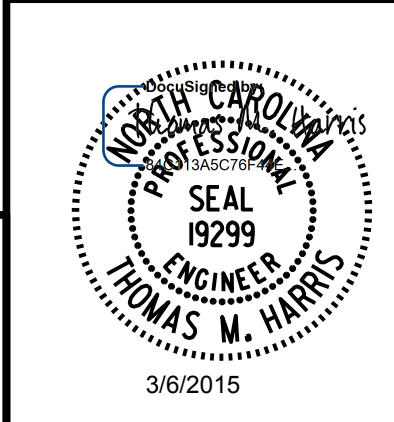
FOR TEMPORARY DRAINAGE AT END BENT DETAIL, SEE SHEET 2 OF 2.



NOTE:  
WINGS NOT SHOWN IN THE ELEVATION VIEW.

PROJECT NO. **U-2524BC**  
**GUILFORD COUNTY**  
 STATION: **27+40.75 -L-**  
 SHEET 1 OF 2

STATE OF NORTH CAROLINA DEPARTMENT OF TRANSPORTATION RALEIGH					
<b>SUBSTRUCTURE</b>					
<b>END BENT 2</b>					
REVISIONS					
No.	BY:	DATE:	No.	BY:	DATE:
1			3		
2			4		
					SHEET No. <b>S01-23</b>
					TOTAL SHEETS <b>27</b>



PLANS PREPARED BY:  
**PARSONS**  
 5540 CenterView Drive, Suite 217  
 Raleigh, NC 27606-3386  
 NC LICENSE No. F-0246  
 FOR NORTH CAROLINA DEPARTMENT OF TRANSPORTATION

DRAWN BY: K. E. LOFTON DATE: 1-15  
 CHECKED BY: T. M. HARRIS DATE: 1-15  
 DESIGN ENGINEER: T. M. HARRIS DATE: 2-15