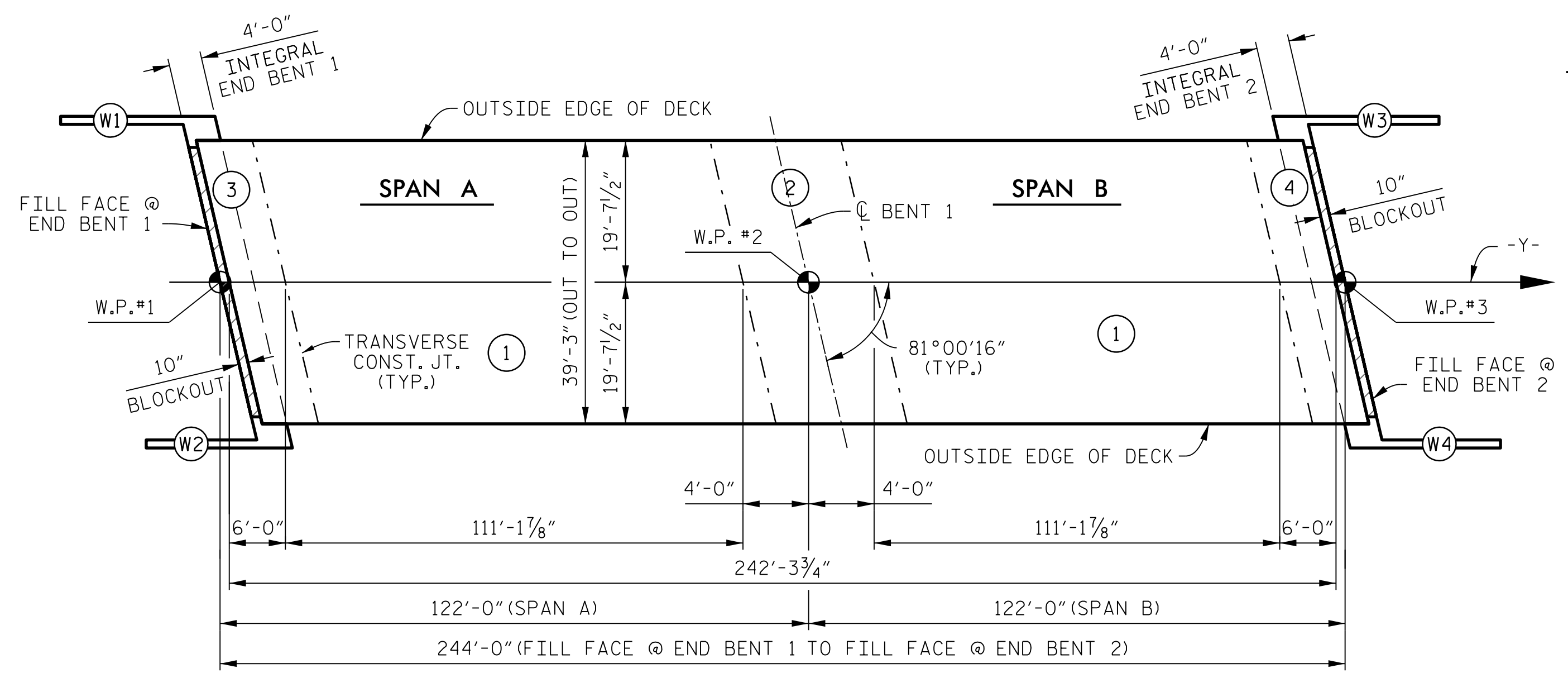
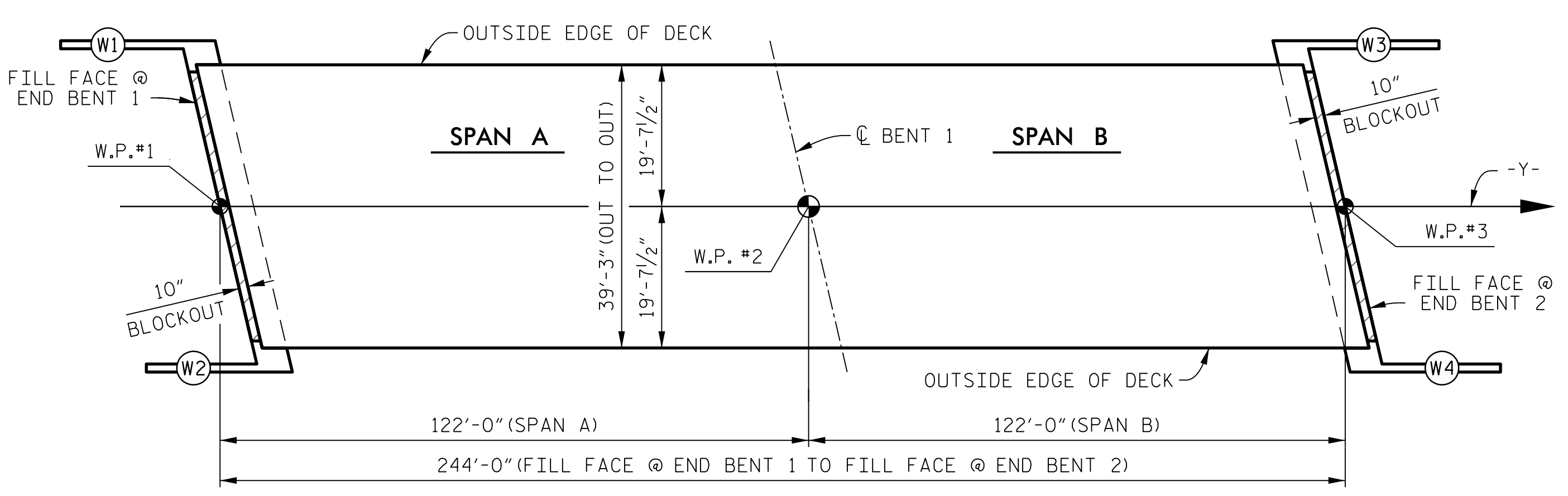


**POURING SEQUENCE**



**OPTIONAL POURING SEQUENCE**



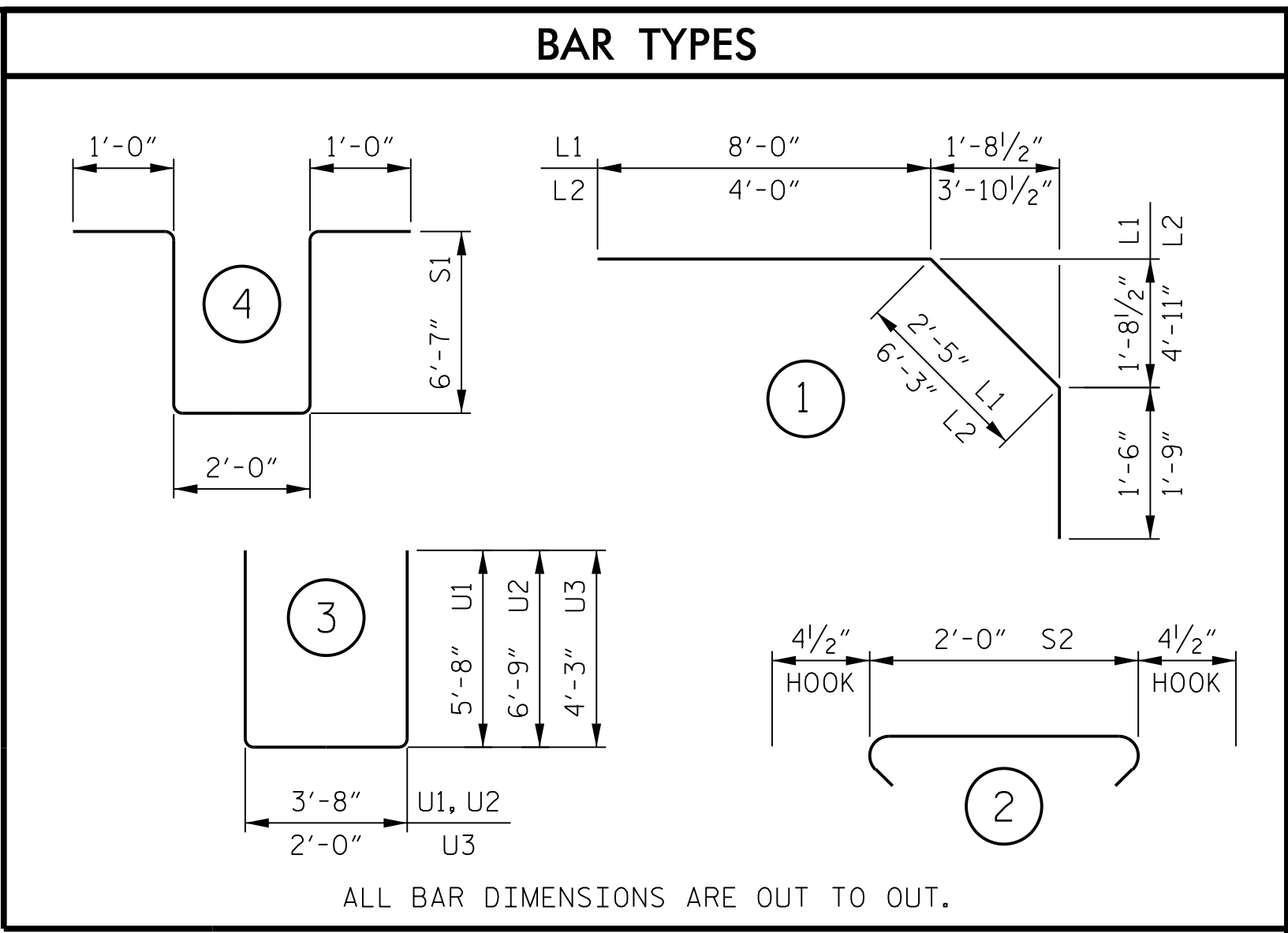
**LAYOUT FOR COMPUTING AREA OF REINFORCED CONCRETE DECK SLAB**

(9,577 SQ. FT.)

**CLASS AA CONCRETE BREAKDOWN**

POUR 1	149.3 CU. YDS.
POUR 2	189.1 CU. YDS.
POUR 3	58.6 CU. YDS.
POUR 4	58.6 CU. YDS.
<b>TOTAL</b>	<b>455.6 CU. YDS.</b>

**NOTES**  
 REINFORCING STEEL AND CONCRETE FOR THE UPPER WINGS IS INCLUDED IN THE PAY ITEM "REINFORCED CONCRETE DECK SLAB".  
 POUR 3 AND POUR 4 MAY BE COMBINED.



**TOTAL SUPERSTRUCTURE QUANTITIES**

	REINFORCING STEEL	EPOXY COATED REINFORCING STEEL	CLASS "AA" CONCRETE
	LBS.	LBS.	CU. YDS.
SPAN A AND SPAN B	35,923	31,817	455.6
<b>** TOTAL</b>	<b>35,923</b>	<b>31,817</b>	<b>455.6</b>

\*\* QUANTITIES FOR CONCRETE BARRIER RAIL ARE NOT INCLUDED. SEE "CONCRETE BARRIER RAIL" SHEET FOR DETAILS.

**GROOVING BRIDGE FLOORS**

	AREA
APPROACH SLAB AT END BENT 1	797 SQ. FT.
BRIDGE DECK	7,984 SQ. FT.
APPROACH SLAB AT END BENT 2	797 SQ. FT.
<b>TOTAL</b>	<b>9,578 SQ. FT.</b>

**SUPERSTRUCTURE REINFORCING STEEL LENGTHS ARE BASED ON THE FOLLOWING MINIMUM SPLICE LENGTHS**

BAR SIZE	SUPERSTRUCTURE EXCEPT APPROACH SLABS, PARAPET AND BARRIER RAIL		APPROACH SLABS		PARAPET AND BARRIER RAIL
	EPOXY COATED	UNCOATED	EPOXY COATED	UNCOATED	
#4	2'-0"	1'-9"	2'-0"	1'-9"	2'-9"
#5	2'-6"	2'-2"	2'-6"	2'-2"	3'-5"
#6	3'-0"	2'-7"	3'-10"	2'-7"	4'-4"
#7	5'-3"	3'-6"			
#8	6'-10"	4'-7"			

**BILL OF MATERIAL SPAN A AND SPAN B**

BAR No.	SIZE	TYPE	LENGTH	WEIGHT
* A1	405	#5	STR 38'-11"	16,439
* A101	2	#5	STR 35'-8"	74
* A102	2	#5	STR 32'-0"	67
* A103	2	#5	STR 28'-4"	59
* A104	2	#5	STR 24'-8"	51
* A105	2	#5	STR 21'-0"	44
* A106	2	#5	STR 17'-3"	36
* A107	2	#5	STR 13'-7"	28
* A108	2	#5	STR 9'-11"	21
* A109	2	#5	STR 6'-3"	13
A2	405	#5	STR 38'-11"	16,439
A201	2	#5	STR 35'-8"	74
A202	2	#5	STR 32'-0"	67
A203	2	#5	STR 28'-4"	59
A204	2	#5	STR 24'-8"	51
A205	2	#5	STR 21'-0"	44
A206	2	#5	STR 17'-3"	36
A207	2	#5	STR 13'-7"	28
A208	2	#5	STR 9'-11"	21
A209	2	#5	STR 6'-3"	13
* B1	168	#4	STR 28'-9"	3,226
* B2	150	#5	STR 24'-5"	3,820
* B3	84	#6	STR 30'-0"	3,785
* B4	50	#6	STR 38'-0"	2,854
B5	240	#5	STR 50'-2"	12,558
B6	43	#5	STR 38'-0"	1,704
H1	28	#8	STR 19'-6"	1,458
H2	28	#8	STR 19'-4"	1,445
K1	28	#4	STR 23'-7"	441
K2	12	#4	STR 6'-5"	51
K3	60	#4	STR 9'-5"	377
K4	6	#4	STR 7'-10"	31
K5	4	#4	STR 5'-4"	14
K6	20	#4	STR 6'-8"	89
K7	4	#4	STR 5'-11"	16
K8	16	#4	STR 2'-8"	29
K9	6	#4	STR 6'-8"	27
K10	14	#4	STR 16'-6"	154
* L1	50	#4	1 11'-11"	398
* L2	50	#4	1 12'-0"	401
S1	21	#4	4 17'-2"	241
S2	150	#4	2 2'-9"	276
* U1	50	#4	3 15'-0"	501
U2	12	#4	3 17'-2"	138
U3	6	#4	3 10'-6"	42
REINFORCING STEEL				35,923 LBS.
EPOXY COATED REINFORCING STEEL				31,817 LBS.

PROJECT NO. **U-2524BC**  
**GUILFORD COUNTY**  
 STATION: **27 + 40.75 -L-**

STATE OF NORTH CAROLINA  
 DEPARTMENT OF TRANSPORTATION  
 RALEIGH

**SUPERSTRUCTURE**

**BILL OF MATERIAL**

REVISIONS						SHEET No.
No.	BY:	DATE:	No.	BY:	DATE:	TOTAL SHEETS
1			3			27
2			4			27

DRAWN BY : K. E. LOFTON DATE : 11-14  
 CHECKED BY : T. M. HARRIS DATE : 1-15  
 DESIGN ENGINEER : T. M. HARRIS DATE : 2-15

PLANS PREPARED BY :  
**PARSONS**  
 5540 CenterView Drive, Suite 217  
 Raleigh, NC 27606-3386  
 NC LICENSE No. F-0246  
 FOR NORTH CAROLINA DEPARTMENT OF TRANSPORTATION

