

BILL OF MATERIAL

FOR CONCRETE BARRIER RAIL ONLY

BAR No.	SIZE	TYPE	LENGTH	WEIGHT
* B1	88	#5	STR 13'-8"	1,254
* B2	176	#5	STR 23'-10"	4,375
* S1	484	#5	1 4'-7"	2,314
* S2	476	#5	2 7'-0"	3,475
* S3	4	#5	2 6'-2"	26
* S4	4	#5	2 5'-4"	22

*EPOXY COATED REINFORCING STEEL 11,466 LBS.
 CLASS "AA" CONCRETE 65.8 CU. YDS.
 CONCRETE BARRIER RAIL 484.63 LIN. FT.

SPLICE LENGTH

BAR	SIZE	LENGTH
B1	#5	3'-5"

PLAN OF BARRIER RAIL

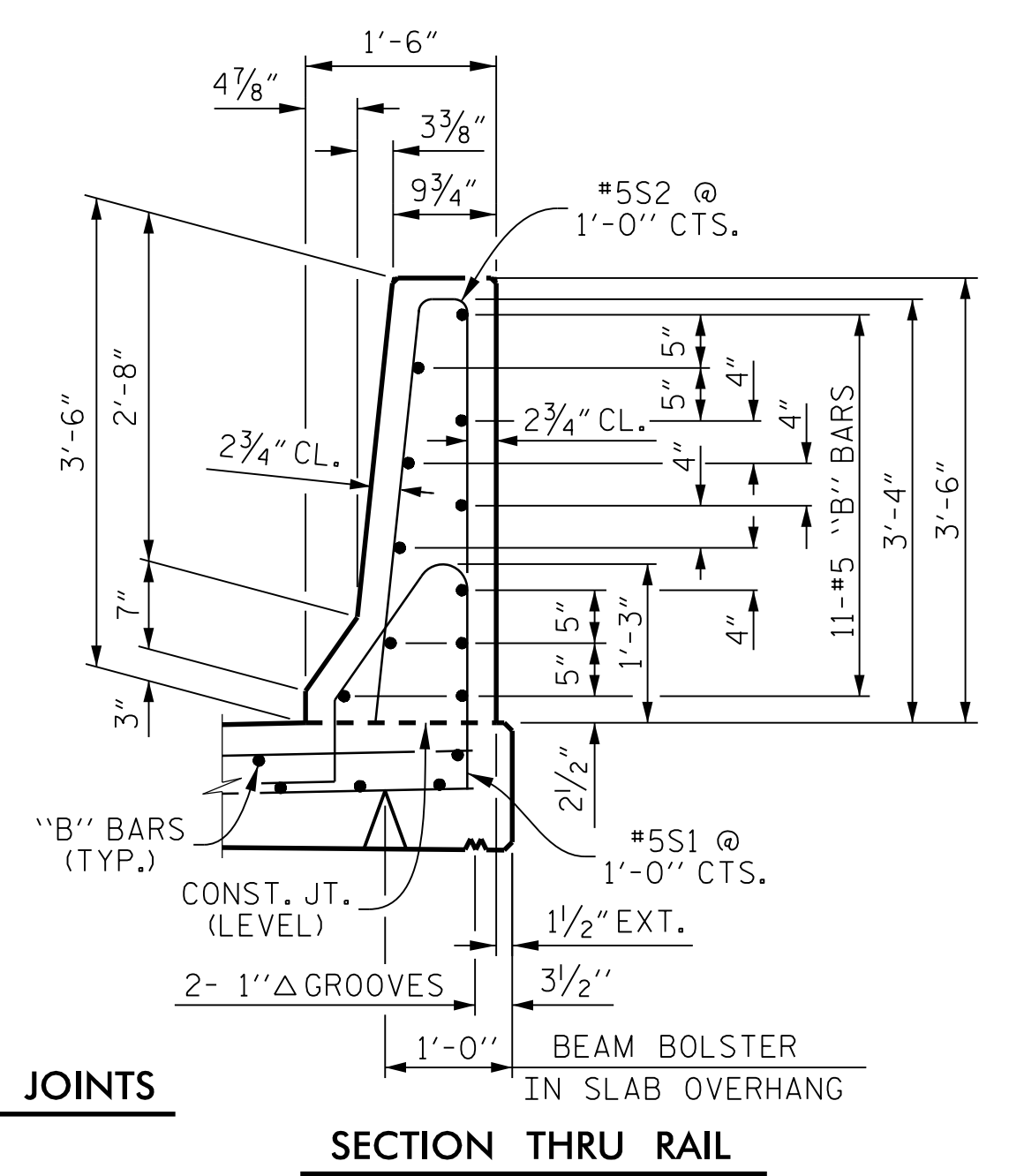
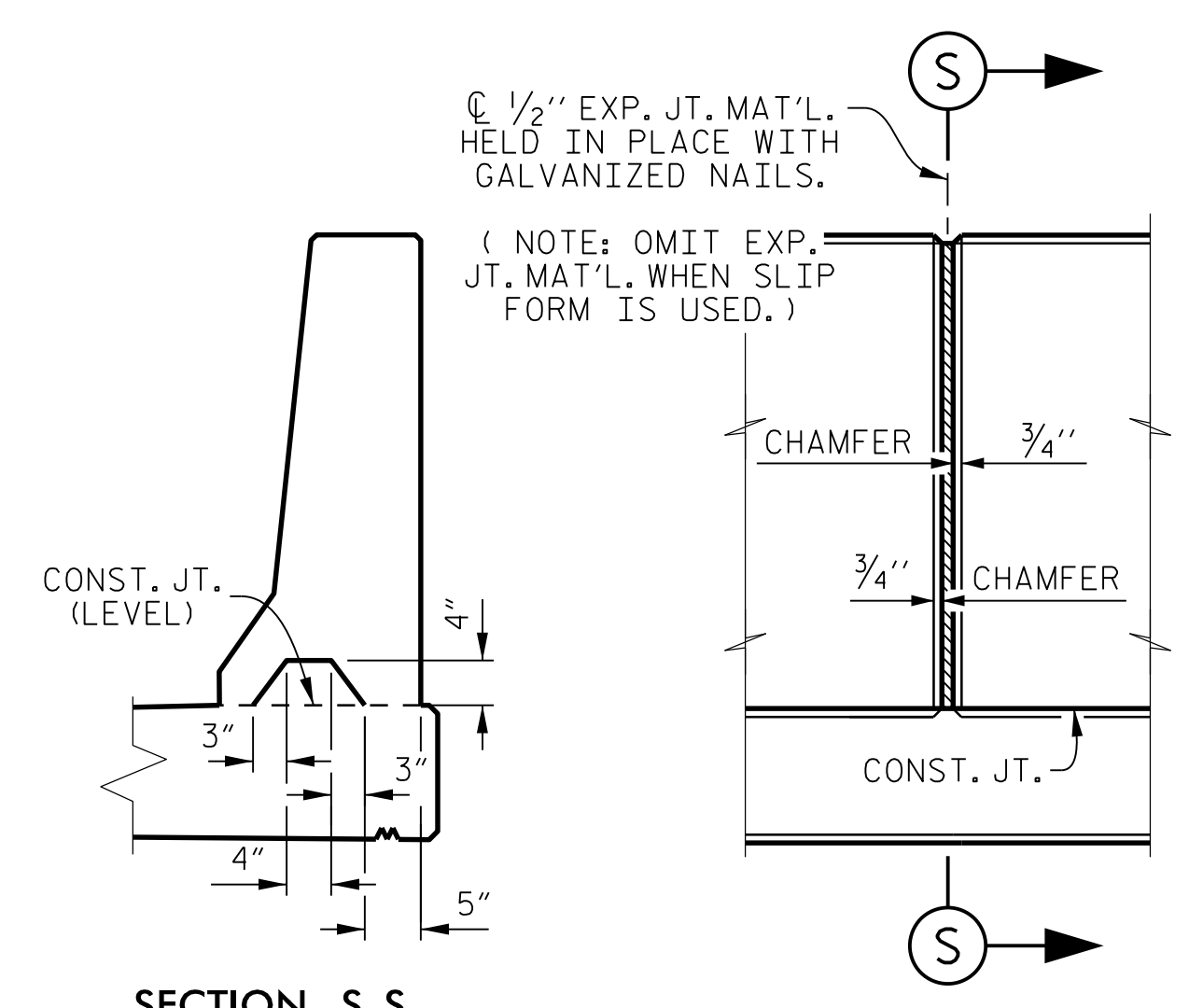
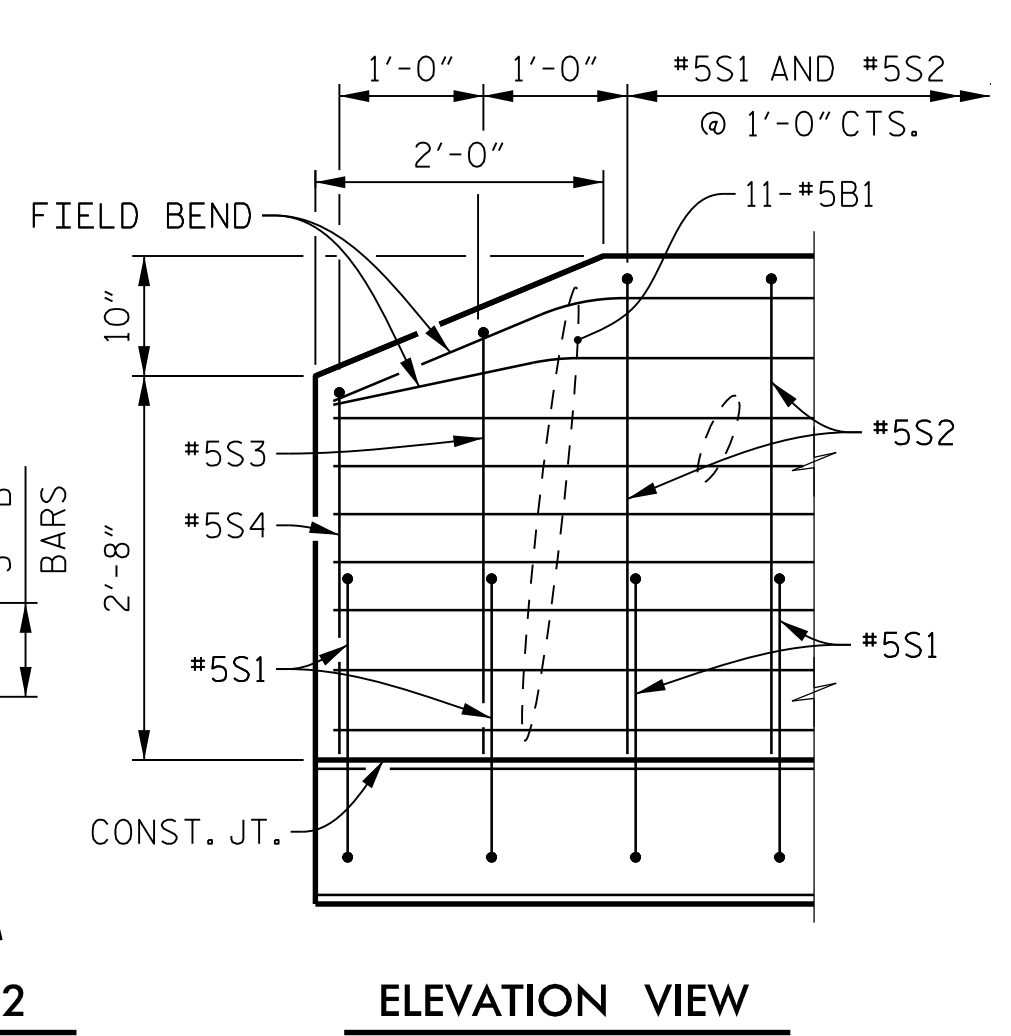
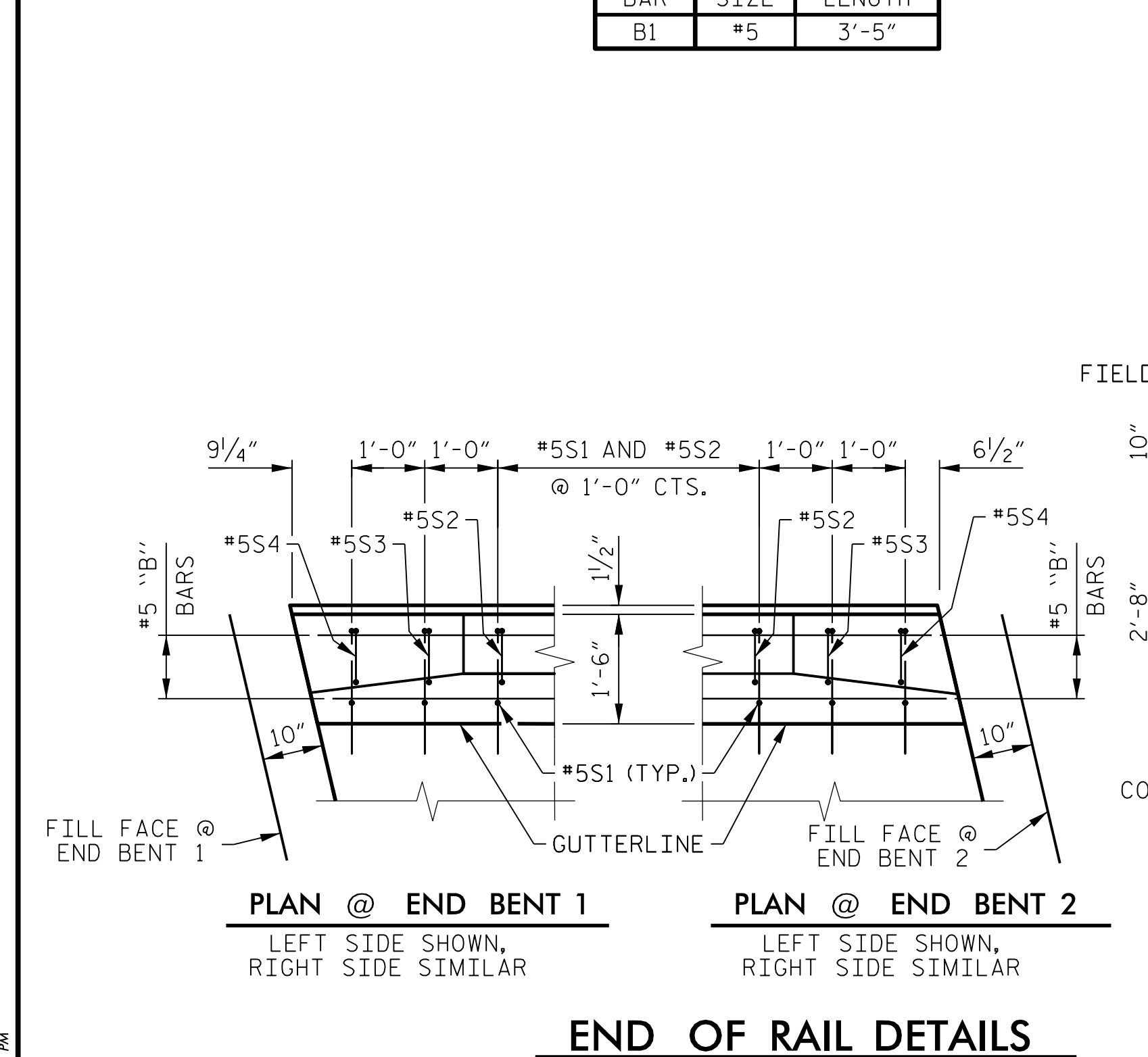
NOTES

THE BARRIER RAIL IN A CONTINUOUS UNIT SHALL NOT BE CAST UNTIL ALL SLAB CONCRETE IN THE UNIT HAS BEEN CAST AND HAS REACHED A MINIMUM COMPRESSIVE STRENGTH OF 3,000 PSI.

ALL REINFORCING STEEL IN BARRIER RAILS SHALL BE EPOXY COATED.

GROOVED CONTRACTION JOINTS, 1/2" IN DEPTH, SHALL BE TOOLED IN ALL EXPOSED FACES OF THE BARRIER RAIL AND IN ACCORDANCE WITH ARTICLE 825-10(B) OF THE STANDARD SPECIFICATIONS. THE CONTRACTION JOINT SHALL BE LOCATED AT EACH THIRD POINT BETWEEN BARRIER RAIL EXPANSION JOINTS. ONLY ONE CONTRACTION JOINT IS REQUIRED AT MIDPOINT OF BARRIER RAIL SEGMENTS LESS THAN 20 FEET IN LENGTH AND NO CONTRACTION JOINTS ARE REQUIRED FOR THOSE SEGMENTS LESS THAN 10 FEET IN LENGTH.

THE #5S1 AND #5S2 BARS MAY BE SHIFTED AS NECESSARY TO CLEAR EXPANSION JOINTS IN RAIL.



PROJECT NO. **U-2524BC**
 GUILFORD COUNTY
 STATION: **27 + 40.75 -L-**

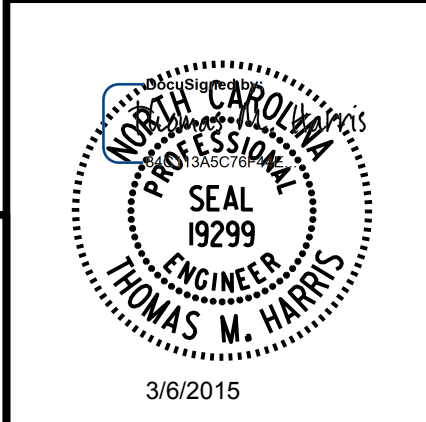
STATE OF NORTH CAROLINA
 DEPARTMENT OF TRANSPORTATION
 RALEIGH
STANDARD CONCRETE BARRIER RAIL

ASSEMBLED BY : K. E. LOFTON DATE : 11-14
 CHECKED BY : T. M. HARRIS DATE : 1-15

DRAWN BY : ARB 5/87 REV. 10/1/11 MAA/GM
 CHECKED BY : SJD 9/87 REV. 7/12 MAA/GM
 DATE: 3/2015 REV. 6/13 MAA/GM

DRAWN BY : K. E. LOFTON DATE : 11-14
 CHECKED BY : T. M. HARRIS DATE : 1-15
 DESIGN ENGINEER : T. M. HARRIS DATE : 2-15

PLANS PREPARED BY :
PARSONS
 5540 CenterView Drive, Suite 217
 Raleigh, NC 27606-3386
 NC LICENSE No. F-0246



REVISIONS						SHEET No.
No.	BY:	DATE:	No.	BY:	DATE:	TOTAL SHEETS
1			3			27
2			4			27