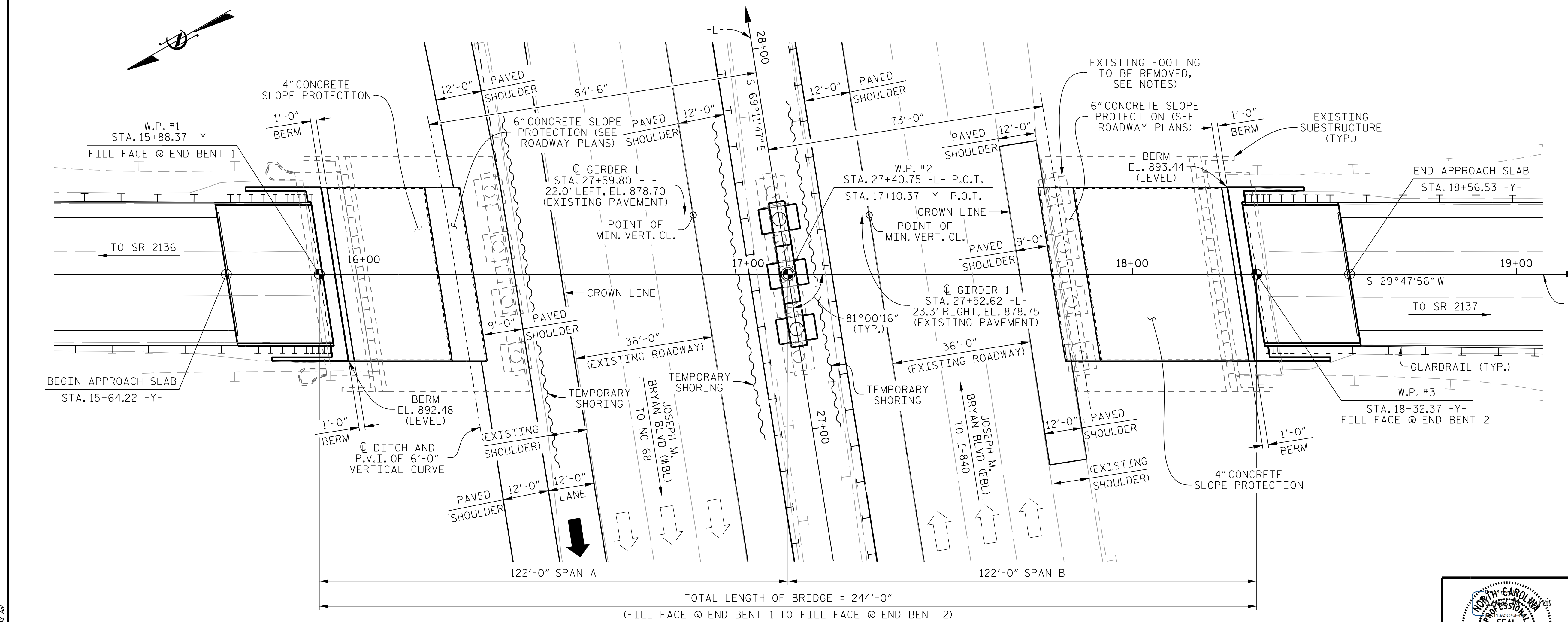
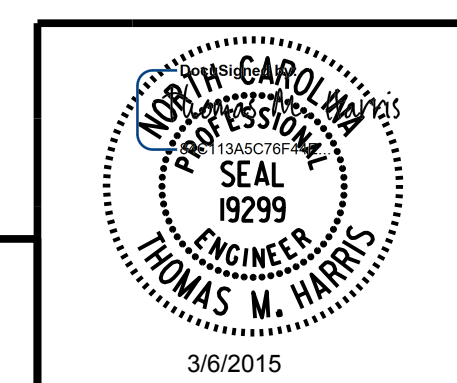


NOTE
FOR GENERAL NOTES, SEE SHEET 3 OF 3.



PROJECT NO. **U-2524BC**
GUILFORD COUNTY
STATION: **27+40.75 -L-**
17+10.37 -Y-
SHEET 1 OF 3 REPLACES BRIDGE No. 743

STATE OF NORTH CAROLINA
DEPARTMENT OF TRANSPORTATION
RALEIGH
PRELIMINARY GENERAL DRAWING
BRIDGE OVER SR 2085 (-L-)
ON SR 2140 (-Y-) BETWEEN
SR 2136 AND SR 2137



PLANS PREPARED BY:
PARSONS
5540 CenterView Drive, Suite 217
Raleigh, NC 27606-3386
NC LICENSE No. F-0246
FOR NORTH CAROLINA DEPARTMENT OF TRANSPORTATION

DRAWN BY: K. E. LOFTON DATE: 1-15
CHECKED BY: T. M. HARRIS DATE: 1-15
DESIGN ENGINEER: T. M. HARRIS DATE: 2-15

REVISIONS						SHEET No. S01-1
No.	BY:	DATE:	No.	BY:	DATE:	
1			3			TOTAL SHEETS 27
2			4			STR. #1

FILE: J:\U-2524BC\Structures\Plans\Final\U2524BC_S01.dgn
DATE: 3/6/2015 10:30:03 AM