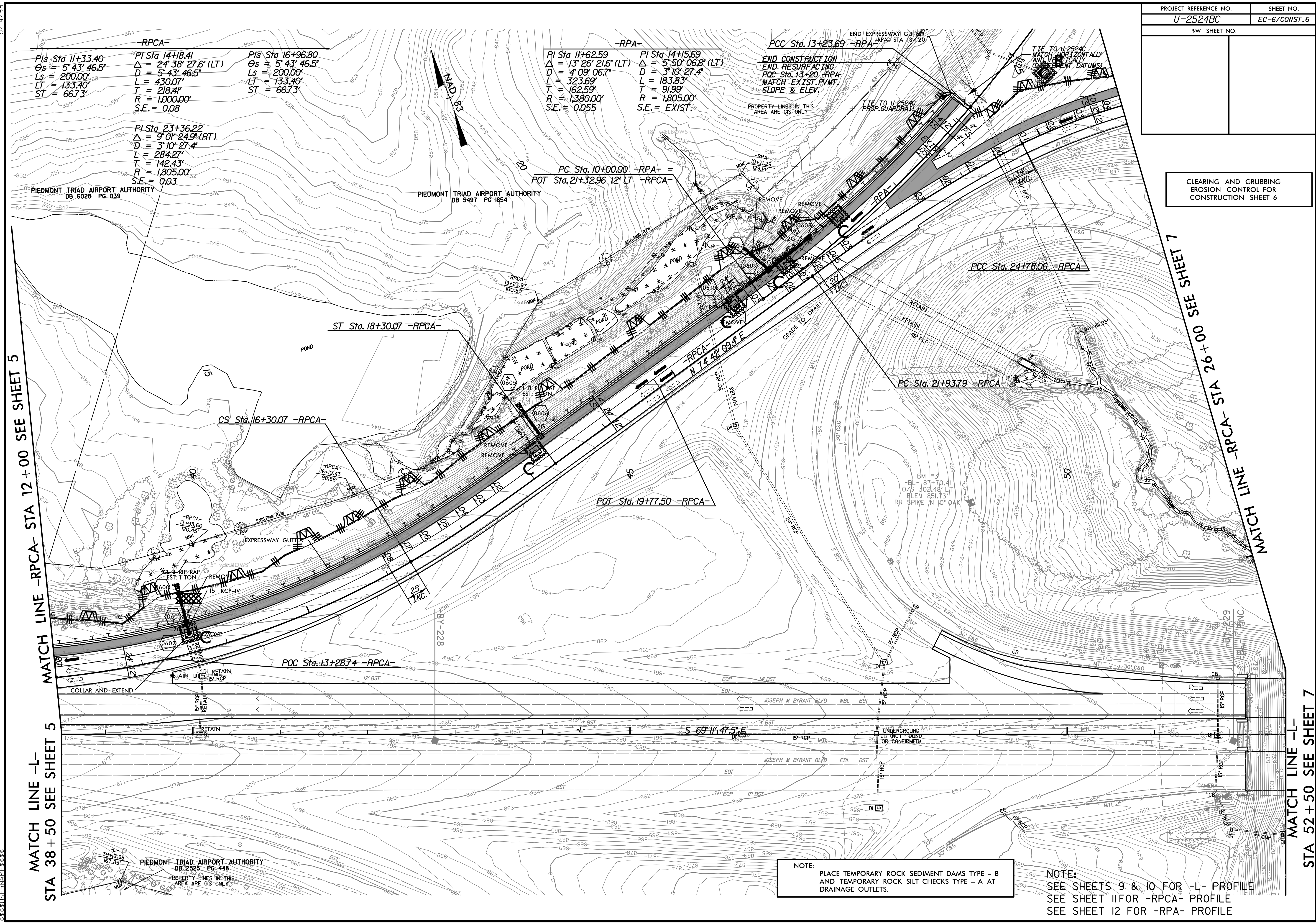


PROJECT REFERENCE NO.	SHEET NO.
U-2524BC	EC-6/CONST. 6
RW SHEET NO.	

CLEARING AND GRUBBING
EROSION CONTROL FOR
CONSTRUCTION SHEET 6



5/14/99

MATCH LINE -RPA- STA 12+00 SEE SHEET 5

MATCH LINE -RPA- STA 26+00 SEE SHEET 7

MATCH LINE -L- STA 38+50 SEE SHEET 5

MATCH LINE -L- STA 52+50 SEE SHEET 7

-RPA-

PIs Sta 11+33.40
 $\Theta_s = 5' 43' 46.5''$
 $L_s = 200.00'$
 $LT = 133.40'$
 $ST = 66.73'$

PIs Sta 14+18.41
 $\Delta = 24' 38' 27.6''$ (LT)
 $D = 5' 43' 46.5''$
 $L = 430.07'$
 $T = 218.41'$
 $R = 1,000.00'$
 $S.E. = 0.08$

PIs Sta 16+96.80
 $\Theta_s = 5' 43' 46.5''$
 $L_s = 200.00'$
 $LT = 133.40'$
 $ST = 66.73'$

PI Sta 23+36.22
 $\Delta = 9' 01' 24.9''$ (RT)
 $D = 3' 10' 27.4''$
 $L = 284.27'$
 $T = 142.43'$
 $R = 1,805.00'$
 $S.E. = 0.03$

-RPA-

PI Sta 11+62.59
 $\Delta = 13' 26' 21.6''$ (LT)
 $D = 4' 09' 06.7''$
 $L = 323.69'$
 $T = 162.59'$
 $R = 1,380.00'$
 $S.E. = 0.055$

PI Sta 14+15.69
 $\Delta = 5' 50' 06.8''$ (LT)
 $D = 3' 10' 27.4''$
 $L = 183.83'$
 $T = 91.99'$
 $R = 1,805.00'$
 $S.E. = EXIST.$

-RPA-

PCC Sta. 13+23.69
**END CONSTRUCTION
 END RESURFACING
 POC Sta. 13+20 -RPA-
 MATCH EXIST. P.V.M.T.
 SLOPE & ELEV.**

PC Sta. 10+00.00 -RPA- =
 POT Sta. 21+32.96 12' LT -RPA-

ST Sta. 18+30.07 -RPA-

CS Sta. 16+30.07 -RPA-

POT Sta. 19+77.50 -RPA-

POC Sta. 13+28.74 -RPA-

PC Sta. 21+93.79 -RPA-

PCC Sta. 24+78.06 -RPA-

NOTE:
 PLACE TEMPORARY ROCK SEDIMENT DAMS TYPE - B
 AND TEMPORARY ROCK SILT CHECKS TYPE - A AT
 DRAINAGE OUTLETS.

NOTE:
 SEE SHEETS 9 & 10 FOR -L- PROFILE
 SEE SHEET 11 FOR -RPA- PROFILE
 SEE SHEET 12 FOR -RPA- PROFILE

PIEDMONT TRIAD AIRPORT AUTHORITY
 DB 2525 PG 448
 PROPERTY LINES IN THIS
 AREA ARE GIS ONLY

PIEDMONT TRIAD AIRPORT AUTHORITY
 DB 5497 PG 1854

PIEDMONT TRIAD AIRPORT AUTHORITY
 DB 6028 PG 039

S 69° 11' 47.5" E

JOSEPH W BYRANT BLVD WBL BST

JOSEPH W BYRANT BLVD EBL BST

UNDERGROUND
 15" RCP
 OR CONFIRMED

15" RCP

15" RCP

15" RCP

15" RCP

15" RCP

15" RCP

15" RCP

15" RCP

15" RCP

15" RCP

15" RCP

15" RCP

15" RCP

15" RCP

15" RCP