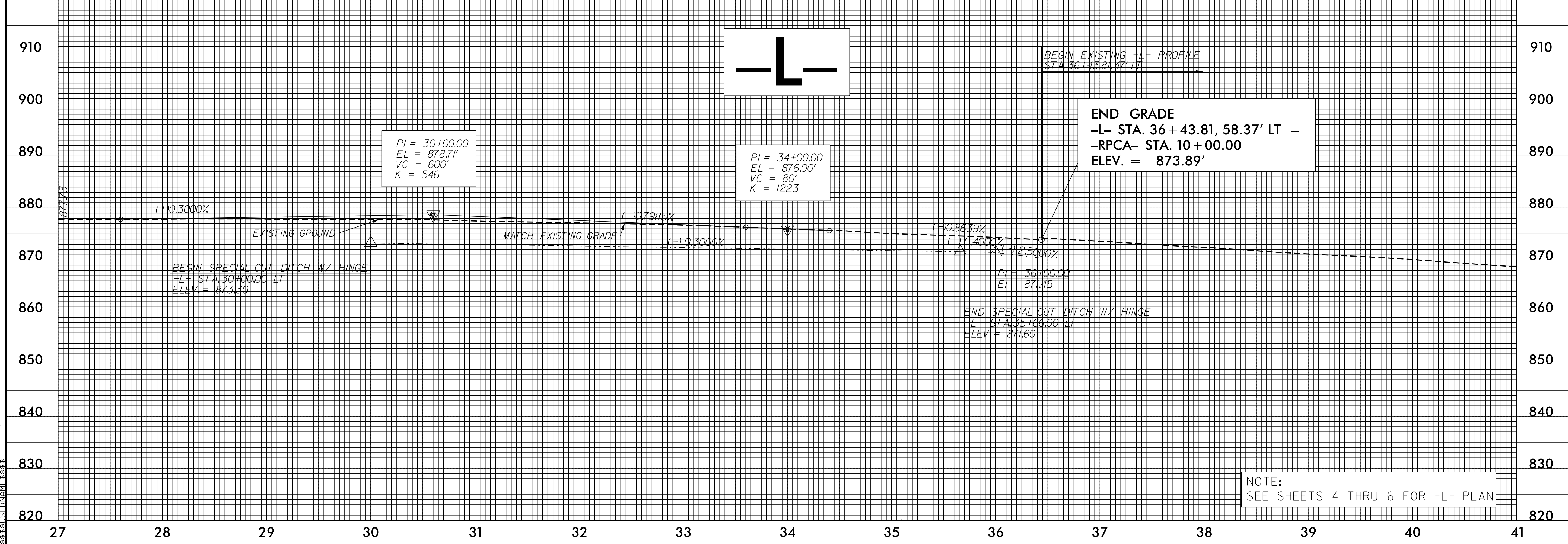
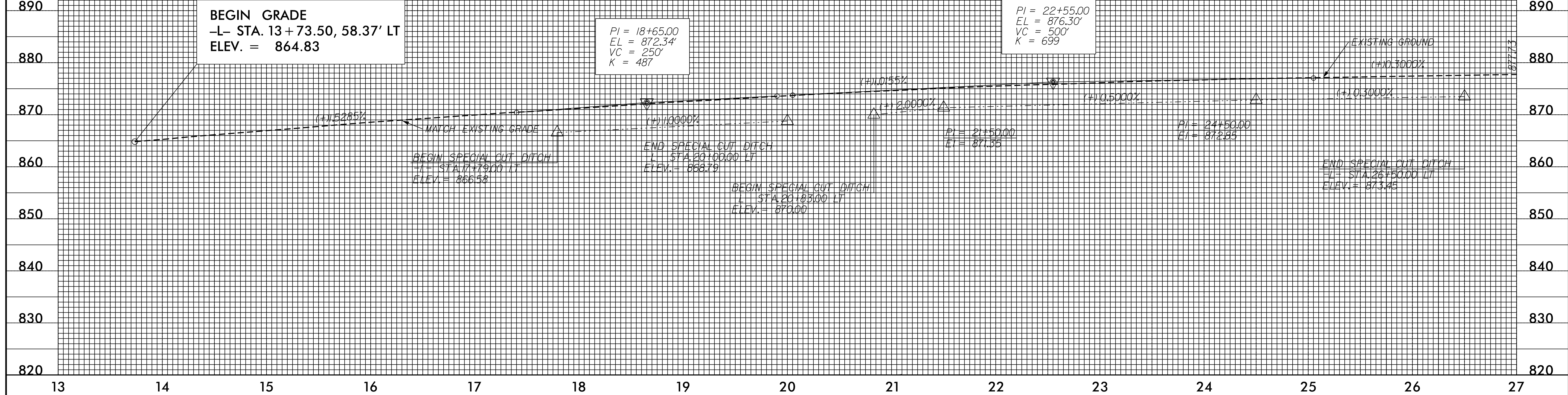


5/28/99

BM #5
-BY- 165+47.39
OFF 248.75' LT
ELEV. 879.90'
RR SPIKE IN 12" POPLAR

PROJECT REFERENCE NO. U-2524BC	SHEET NO. 9
ROADWAY DESIGN ENGINEER NORTH CAROLINA PROFESSIONAL SEAL 37950 JASON M. HARRIS 4/20/2015	HYDRAULICS ENGINEER NORTH CAROLINA PROFESSIONAL SEAL 29984 DANIEL W. BRADY 4/16/2015



NOTE:
SEE SHEETS 4 THRU 6 FOR -L- PLAN

U:\15-2524BC\1500\adw\proj\2524BC-RDY_PFL_9.DGN
\$\$\$\$\$USERNAME\$\$\$\$\$