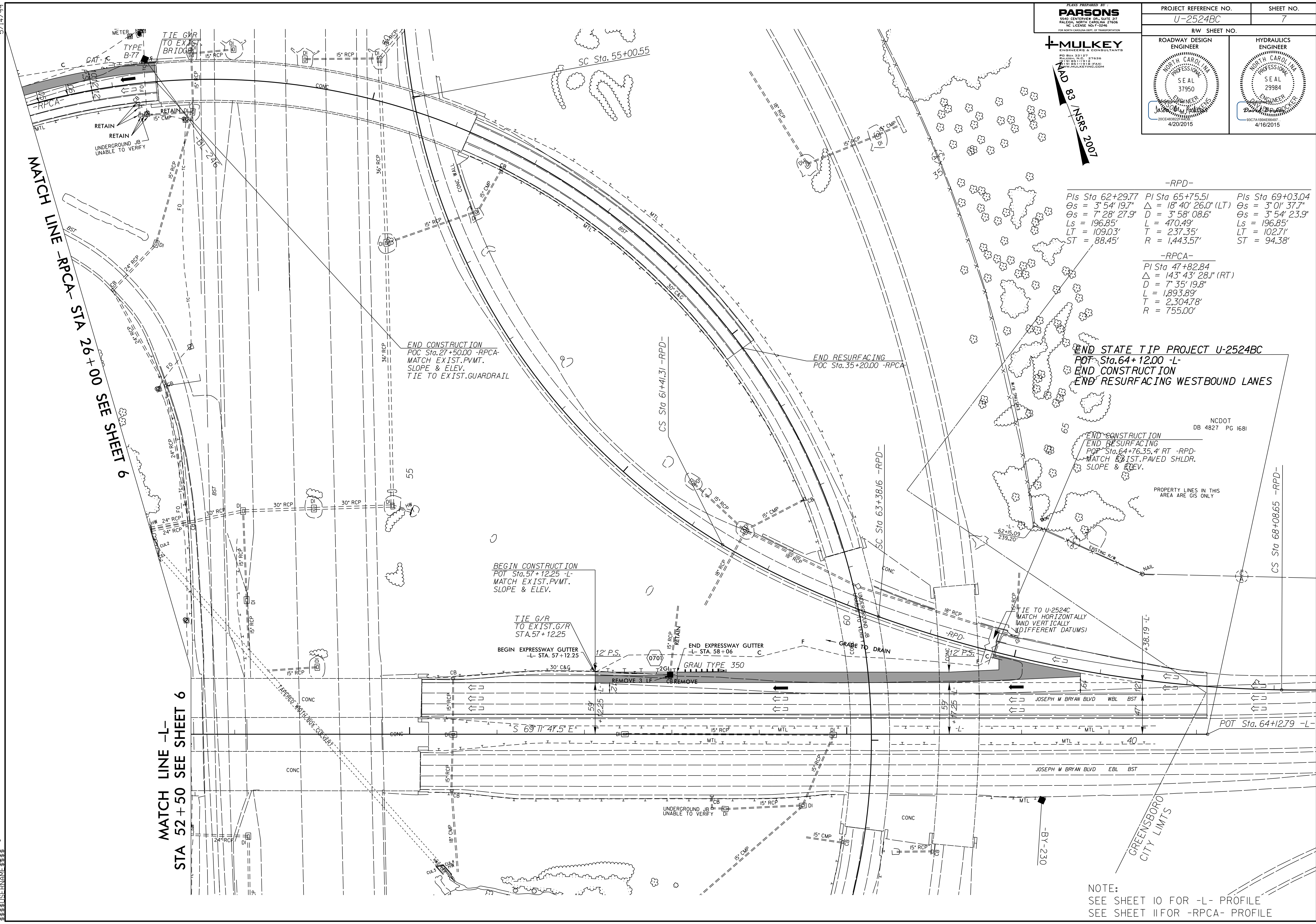


PLANS PREPARED BY:
PARSONS
 2400 COUNTRY DR., SUITE 201
 RALEIGH, NORTH CAROLINA 27606
 NC LICENSE NO. F-02046
 FOR NORTH CAROLINA DEPT. OF TRANSPORTATION

MULKEY
 ENGINEERS & CONSULTANTS
 100 BOX 22127
 1101 BS-1912
 1101 BS-1912
 1101 BS-1912
 WWW.MULKEYIND.COM

RD 83 / NRS 2007

PROJECT REFERENCE NO. U-2524BC	SHEET NO. 7
RW SHEET NO.	
ROADWAY DESIGN ENGINEER	HYDRAULICS ENGINEER



-RPD-

PIs Sta 62+29.77 $\Theta_s = 3^\circ 54' 19.7''$ $\Delta = 7^\circ 28' 27.9''$ $L_s = 196.85'$ $LT = 109.03'$ $ST = 88.45'$	PIs Sta 65+75.51 $\Delta = 18^\circ 40' 26.0''$ (LT) $D = 3^\circ 58' 08.6''$ $L = 470.49'$ $T = 237.35'$ $R = 1,443.57'$	PIs Sta 69+03.04 $\Theta_s = 3^\circ 01' 37.7''$ $\Delta = 3^\circ 54' 23.9''$ $L_s = 196.85'$ $LT = 102.71'$ $ST = 94.38'$
--	--	--

-RPCA-

PIs Sta 47+82.84 $\Delta = 143^\circ 43' 28.1''$ (RT) $D = 7^\circ 35' 19.8''$ $L = 1,893.89'$ $T = 2,304.78'$ $R = 755.00'$

END STATE TIP PROJECT U-2524BC
 POT Sta. 64+12.00 -L-
 END CONSTRUCTION
 END RESURFACING WESTBOUND LANES

END CONSTRUCTION
 END RESURFACING
 POT Sta. 64+76.35.4' RT -RPD-
 MATCH EXIST. PAVED SHLDR.
 SLOPE & ELEV.

PROPERTY LINES IN THIS AREA ARE GIS ONLY

NCDOT
 DB 4827 PG 1681

TIE TO U-2524C
 MATCH HORIZONTALLY
 AND VERTICALLY
 (DIFFERENT DATUMS)

POT Sta. 64+12.79 -L-

NOTE:
 SEE SHEET 10 FOR -L- PROFILE
 SEE SHEET 11 FOR -RPCA- PROFILE

J:\U-2524BC\2015\1100\U-2524BC.RDY.PSH.7.DGN
 15-APR-2015 11:00 AM
 33,333