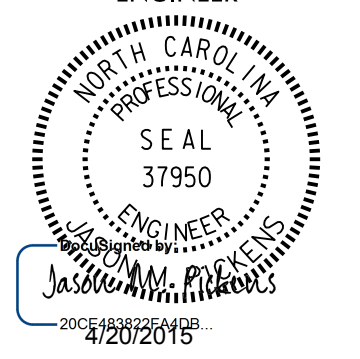
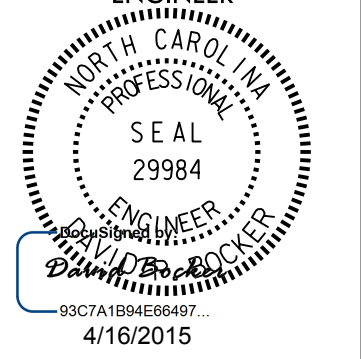


5/14/99

PROJECT REFERENCE NO. U-2524BC		SHEET NO. 6	
RW SHEET NO.			
ROADWAY DESIGN ENGINEER		HYDRAULICS ENGINEER	
			

PLANS PREPARED BY:

PARSONS
5540 CENTERVIEW DR., SUITE 217
FALCON, NORTH CAROLINA 27626
NC LICENSE NO. F-0246
FOR NORTH CAROLINA DEPT. OF TRANSPORTATION

MULKEY
ENGINEERS & CONSULTANTS

PO BOX 22127
RALEIGH, NC 27626
919 881-1918 (FAX)
WWW.MULKEYINC.COM

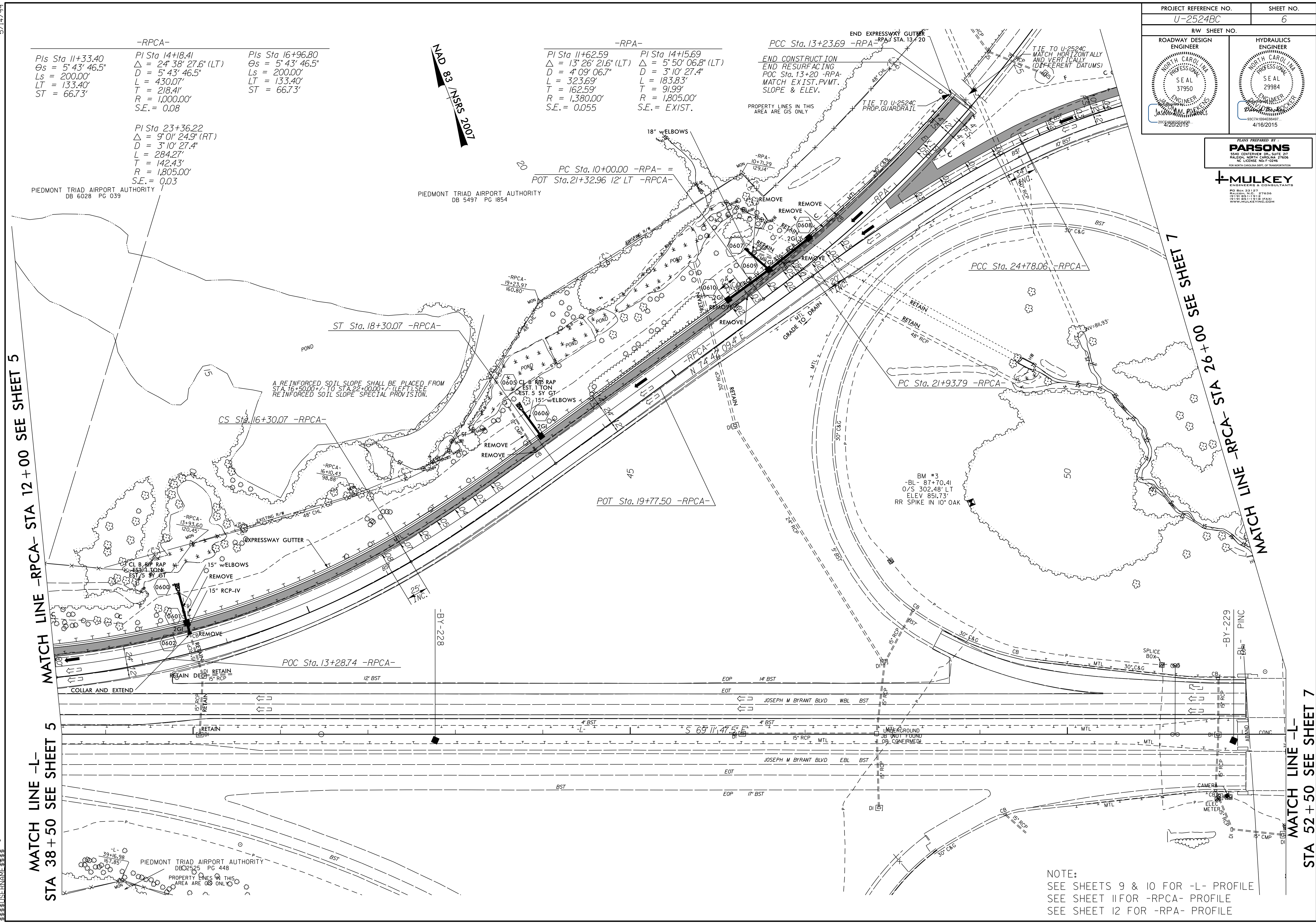
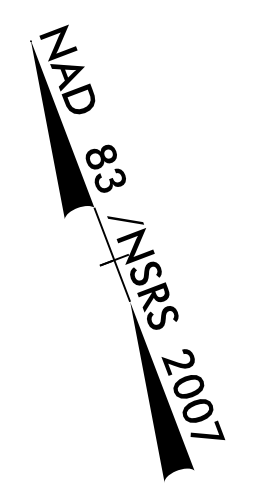
-RPCA-

Pls Sta 11+33.40 Θs = 5° 43' 46.5" Ls = 200.00' LT = 133.40' ST = 66.73'	PI Sta 14+18.41 Δ = 24° 38' 27.6" (LT) D = 5° 43' 46.5" L = 430.07' T = 218.41' R = 1,000.00' S.E. = 0.08	Pls Sta 16+96.80 Θs = 5° 43' 46.5" Ls = 200.00' LT = 133.40' ST = 66.73'
--	---	--

PI Sta 23+36.22
Δ = 9° 01' 24.9" (RT)
D = 3° 10' 27.4"
L = 284.27'
T = 142.43'
R = 1,805.00'
S.E. = 0.03

-RPA-

PI Sta 11+62.59 Δ = 13° 26' 21.6" (LT) D = 4° 09' 06.7" L = 323.69' T = 162.59' R = 1,380.00' S.E. = 0.055	PI Sta 14+15.69 Δ = 5° 50' 06.8" (LT) D = 3° 10' 27.4" L = 183.83' T = 91.99' R = 1,805.00' S.E. = EXIST.
--	---



MATCH LINE -RPCA- STA 12 + 00 SEE SHEET 5

MATCH LINE -L- STA 38 + 50 SEE SHEET 5

MATCH LINE -RPCA- STA 26 + 00 SEE SHEET 7

MATCH LINE -L- STA 52 + 50 SEE SHEET 7

NOTE:
SEE SHEETS 9 & 10 FOR -L- PROFILE
SEE SHEET 11 FOR -RPCA- PROFILE
SEE SHEET 12 FOR -RPA- PROFILE

J:\U-2524BC\2015\1100\U-2524BC.RDY_PSH_6.DGN
15-APR-2015 11:00 AM
33,333,333