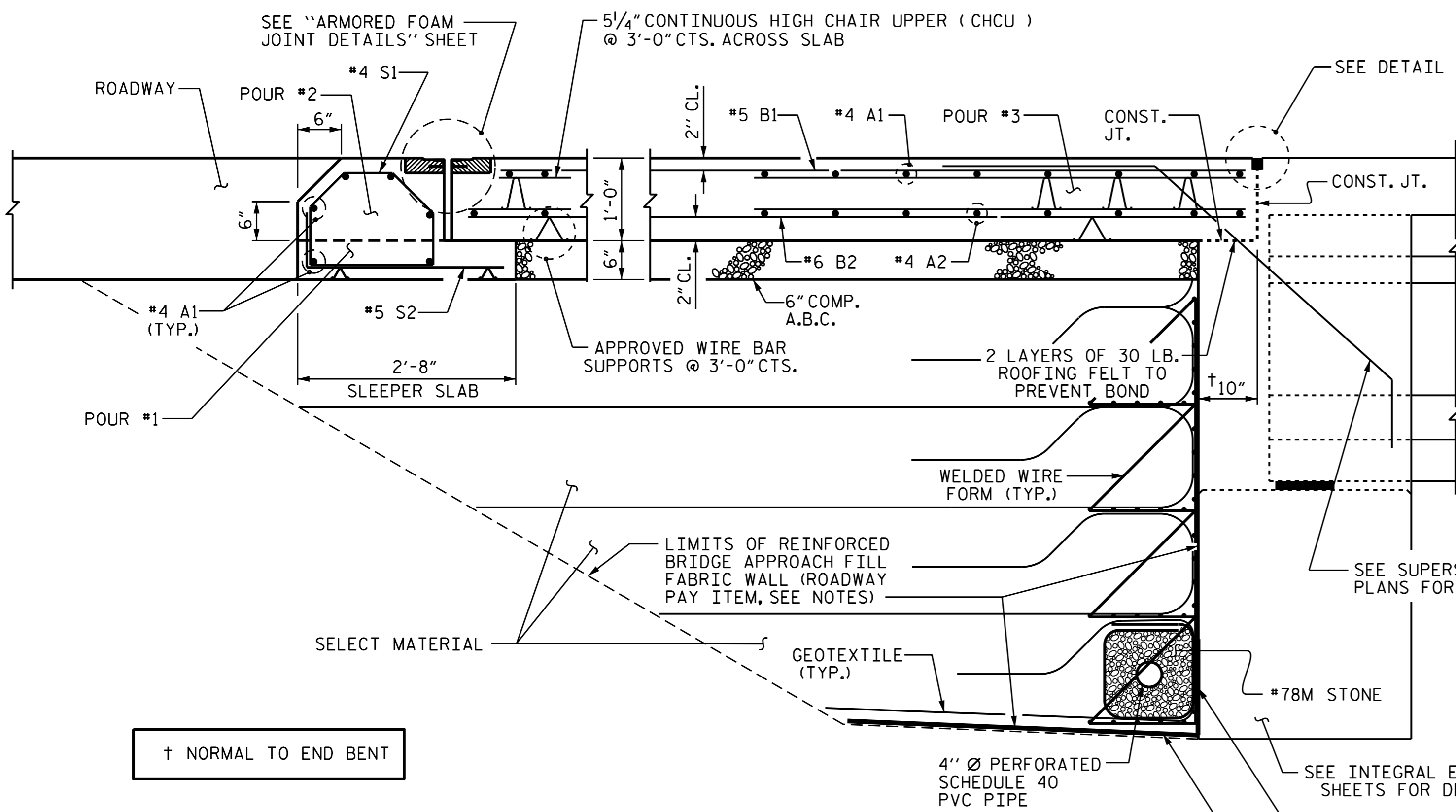


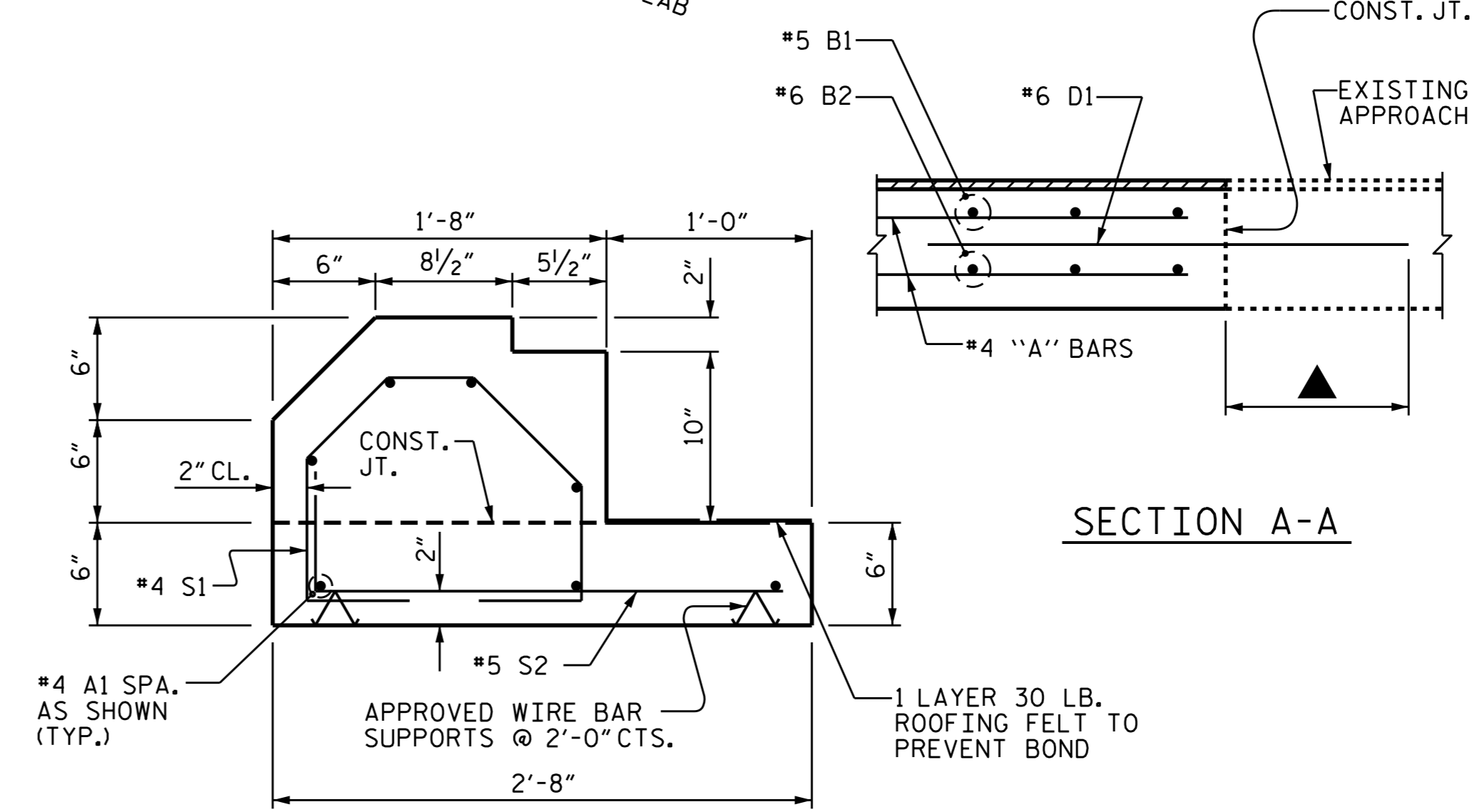
PLAN @ END BENT #1

PLAN @ END BENT #2

DIMENSIONS SHOWN ARE TYPICAL FOR BOTH APPROACH SLABS.
#4 A1 BARS IN SLEEPER SLAB NOT SHOWN FOR CLARITY.

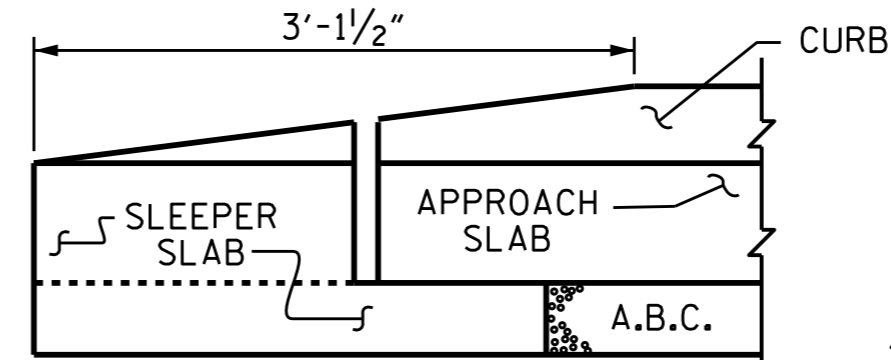


SECTION THRU SLAB

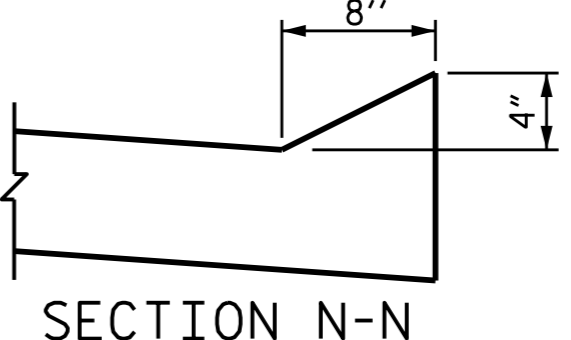


SECTION A-A

SECTION S-S
SHOWING SLEEPER SLAB

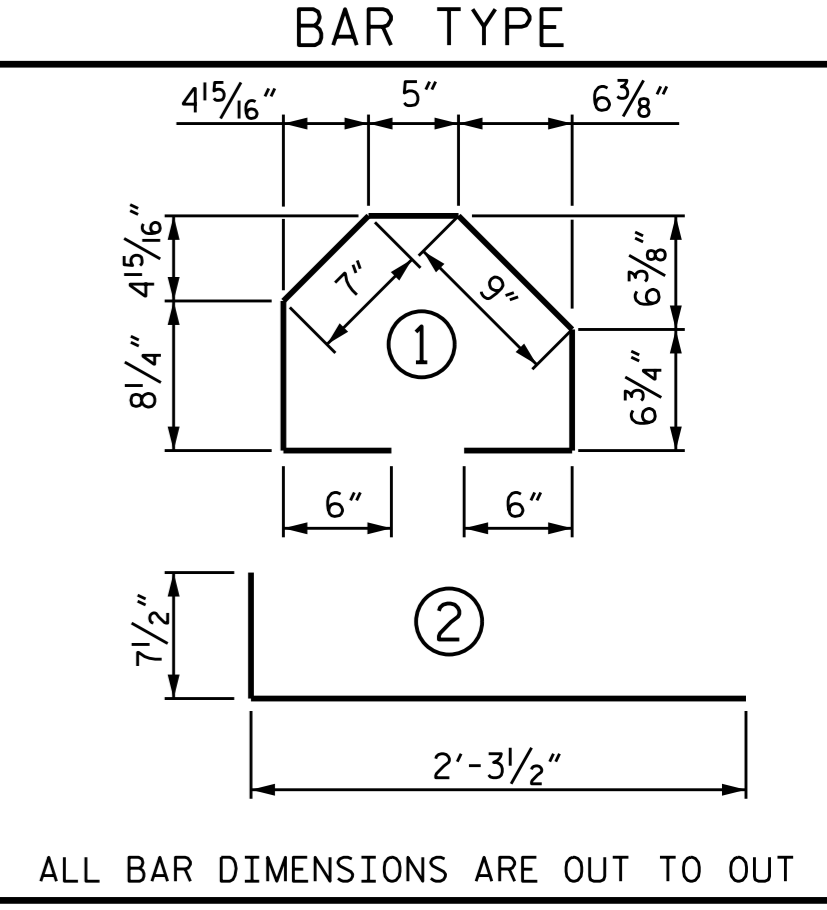


END OF CURB WITHOUT
SHOULDER BERM GUTTER



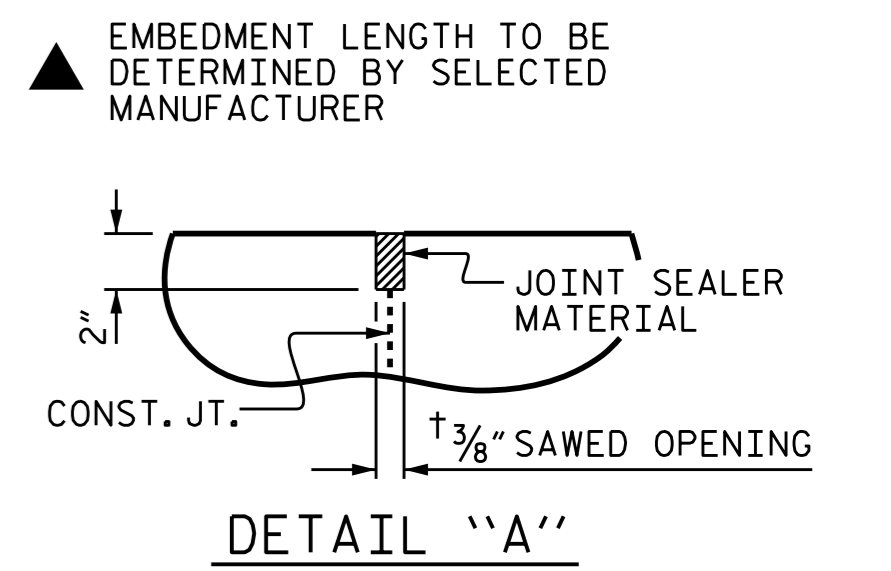
SECTION N-N

BILL OF MATERIAL						
FOR ONE APPROACH SLAB (2 REQ'D)						
BAR	NO.	SIZE	TYPE	LENGTH	WEIGHT	
* A1	31	#4	STR	7'-8"	159	
A2	24	#4	STR	7'-8"	123	
* B1	15	#5	STR	22'-4"	349	
B2	15	#6	STR	22'-10"	514	
* D1	16	#6	STR	3'-0"	72	
* S1	8	#4	1	4'-0"	21	
S2	8	#5	2	2'-11"	24	
REINFORCING STEEL					661 LBS.	
* EPOXY COATED REINFORCING STEEL					601 LBS.	
CLASS AA CONCRETE						
POUR #1 - BOTTOM OF SLEEPER SLAB					0.4 CU.YDS.	
POUR #2 - TOP OF SLEEPER SLAB					0.4 CU.YDS.	
POUR #3 - SLAB & CURB					6.7 CU.YDS.	
TOTAL					7.5 CU.YDS.	



BAR TYPE

ALL BAR DIMENSIONS ARE OUT TO OUT



DETAIL "A"

PROJECT NO. R-2514D
JONES & CRAVEN COUNTY
STATION: 625+23.28-L-

SHEET 1 OF 3

STATE OF NORTH CAROLINA DEPARTMENT OF TRANSPORTATION RALEIGH					
BRIDGE APPROACH SLAB FOR INTEGRAL ABUTMENT					
REVISIONS					SHEET NO.
NO.	BY:	DATE:	NO.	BY:	DATE:
1			3		
2			4		
					S18-037
					TOTAL SHEETS 39

ASSEMBLED BY: M.D.PISO DATE: 01-30-15
CHECKED BY: K.P.SEDAI DATE: 02-04-15
DESIGN ENGINEER OF RECORD: K.P.SEDAI DATE: 02-10-15

