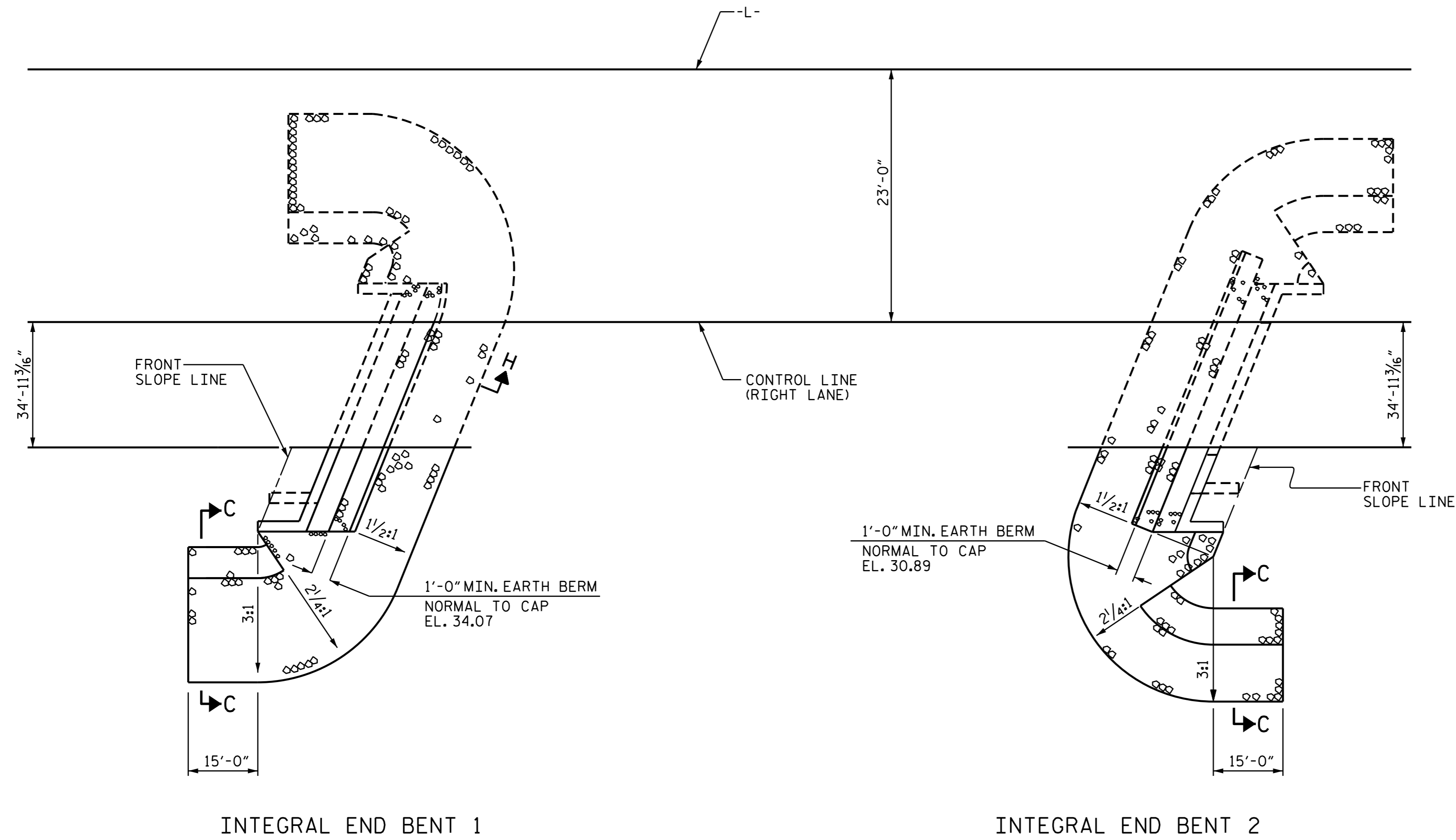


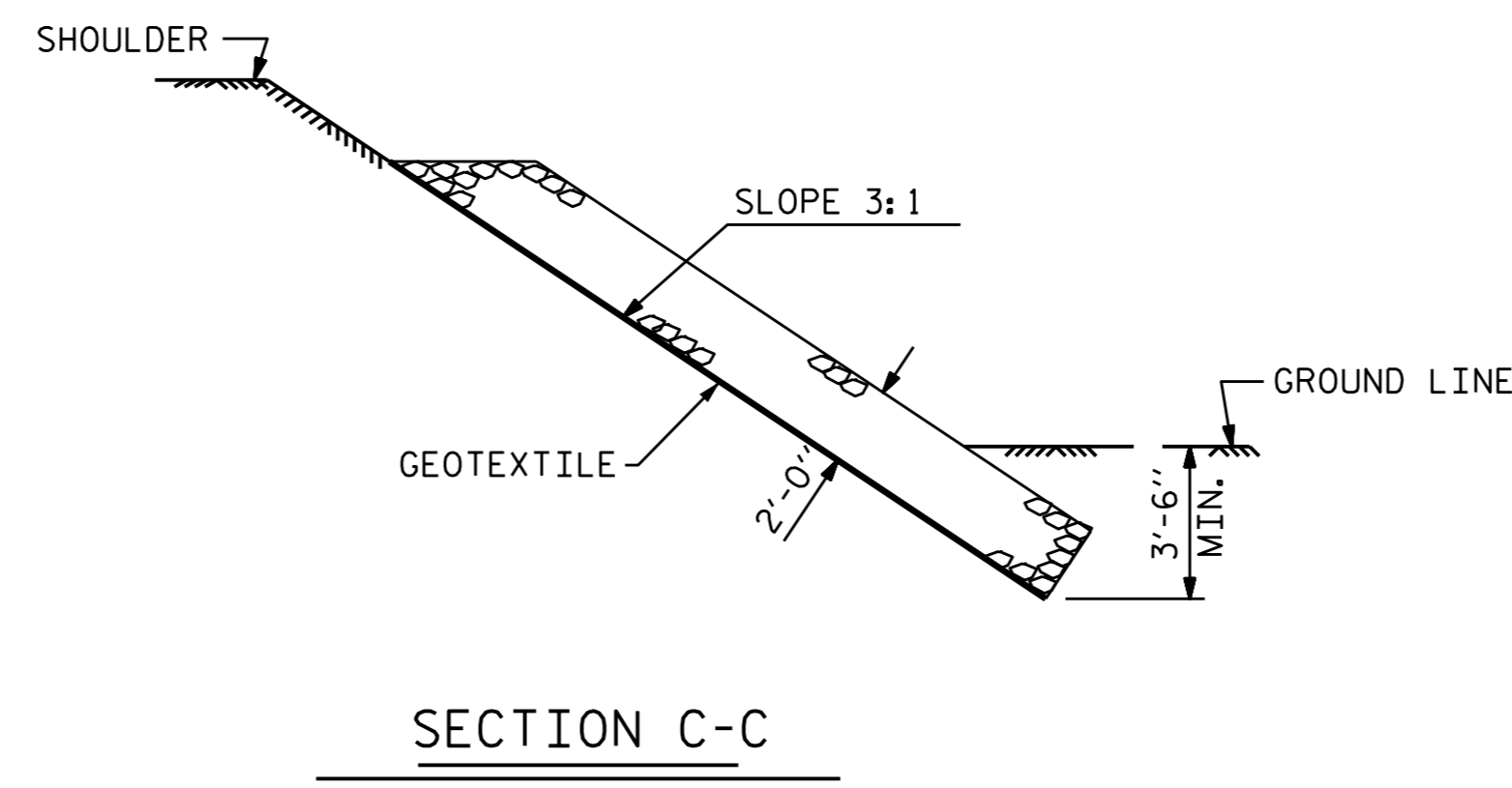
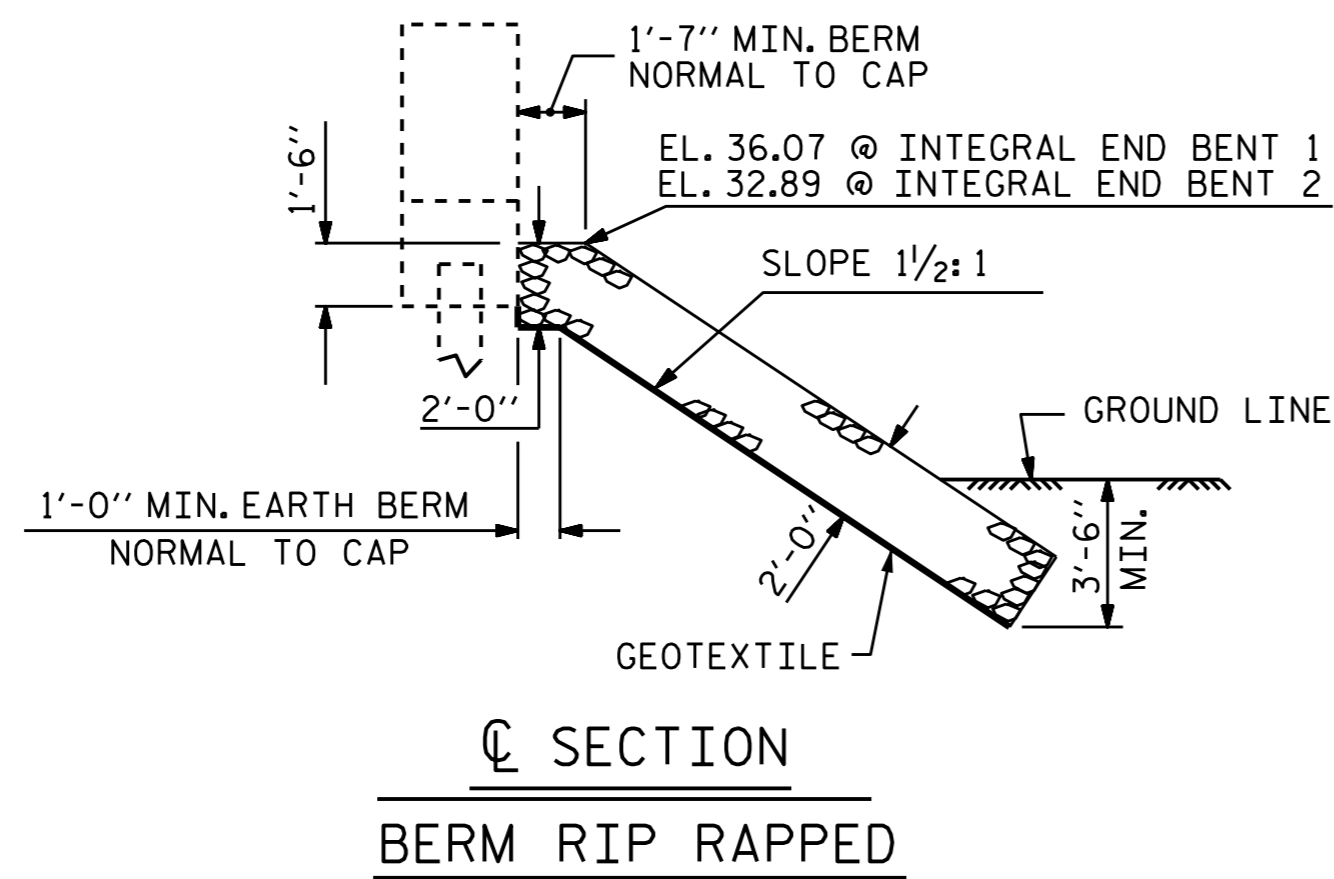
NOTES

REMOVE AND STOCKPILE EXISTING RIP RAP BEFORE DRIVING PILES AT INTEGRAL END BENT 1 AND INTEGRAL END BENT 2.



BERM RIP RAPPED

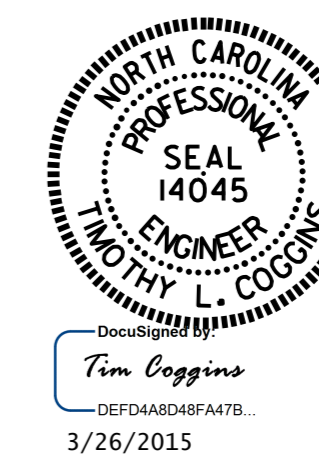
ESTIMATED QUANTITIES		
BRIDGE @ STA. 625+23.28 -L-	RIP RAP CLASS II (2'-0" THICK)	GEOTEXTILE FOR DRAINAGE
	TONS	SQUARE YARDS
INTEGRAL END BENT 1	25	28
INTEGRAL END BENT 2	20	22



SECTION C-C  
BERM RIP RAPPED

SECTION C-C

PROJECT NO. R-2514D  
JONES & CRAVEN COUNTY  
STATION: 623+23.28 -L-



STATE OF NORTH CAROLINA  
DEPARTMENT OF TRANSPORTATION  
RALEIGH  
STANDARD  
—RIP RAP DETAILS—

REVISIONS						SHEET NO. S18-036
NO.	BY:	DATE:	NO.	BY:	DATE:	
1			3			TOTAL SHEETS 39
2			4			

ASSEMBLED BY : M.D.PISO	DATE : 01-22-15
CHECKED BY : D. G. ELY	DATE : 02-10-15
DESIGN ENGINEER OF RECORD : T. L. COGGINS	DATE : 02-10-15
DRAWN BY : REK 1/84	REV. 5/1/06R TLA/GM
CHECKED BY : RDU 1/84	REV. 10/1/11 MAA/GM
	REV. 12/21/11 MAA/GM