

PLAN

NOTES

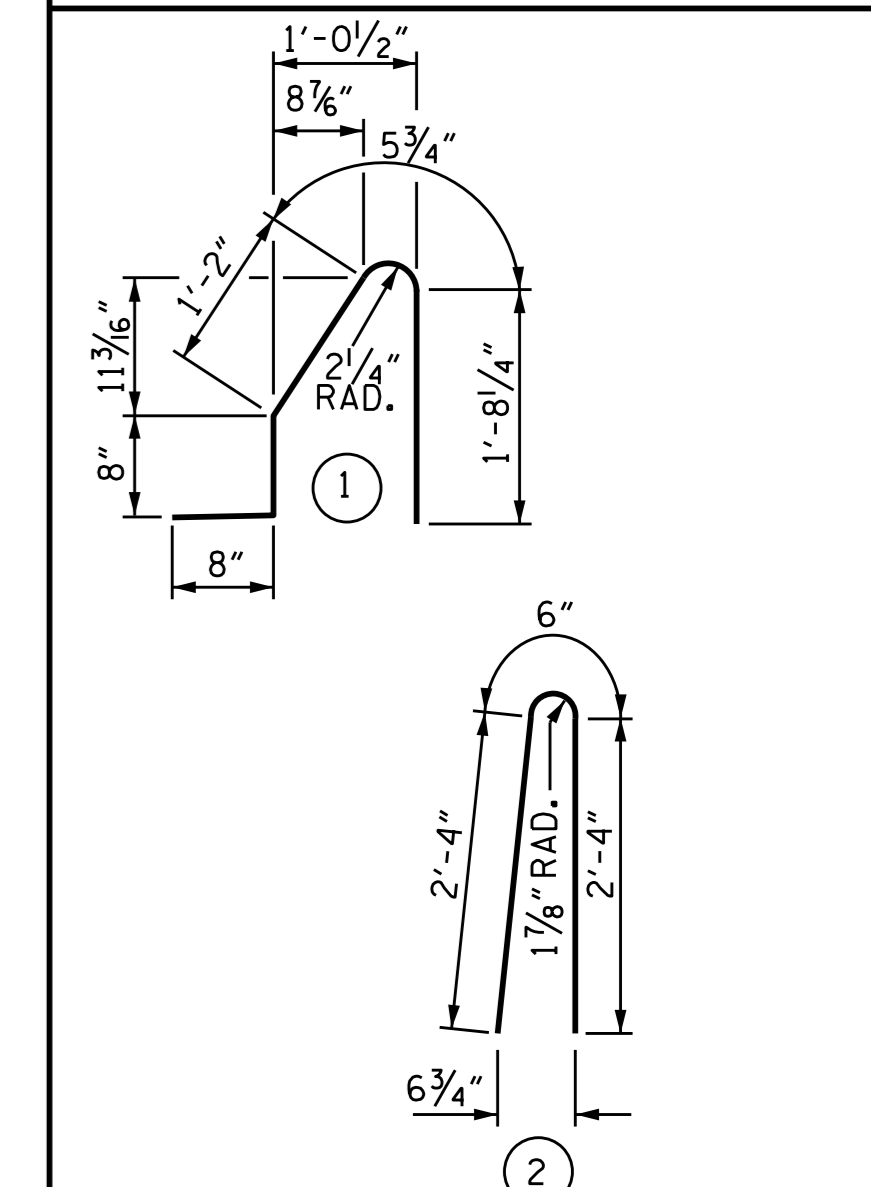
THE BARRIER RAIL IN A CONTINUOUS UNIT SHALL NOT BE CAST UNTIL ALL SLAB CONCRETE IN THE UNIT HAS BEEN CAST AND HAS REACHED A MINIMUM COMPRESSIVE STRENGTH OF 3,000 PSI.

ALL REINFORCING STEEL IN BARRIER RAILS SHALL BE EPOXY COATED.

GROOVED CONTRACTION JOINTS, 1/2" IN DEPTH, SHALL BE TOOLED IN ALL EXPOSED FACES OF THE BARRIER RAIL AND IN ACCORDANCE WITH ARTICLE 825-10(B) OF THE STANDARD SPECIFICATIONS. THE CONTRACTION JOINT SHALL BE LOCATED AT EACH THIRD POINT BETWEEN BARRIER RAIL EXPANSION JOINTS. ONLY ONE CONTRACTION JOINT IS REQUIRED AT MIDPOINT OF BARRIER RAIL SEGMENTS LESS THAN 20 FEET IN LENGTH AND NO CONTRACTION JOINTS ARE REQUIRED FOR THOSE SEGMENTS LESS THAN 10 FEET IN LENGTH.

THE #5 S1 AND #5 S2 BARS MAY BE SHIFTED SLIGHTLY, AS NECESSARY, IN ORDER TO MAINTAIN 2" MIN. CLEARANCE TO THE 1/2" EXPANSION JOINT MATERIAL.

BAR TYPES



ALL BAR DIMENSIONS ARE OUT TO OUT

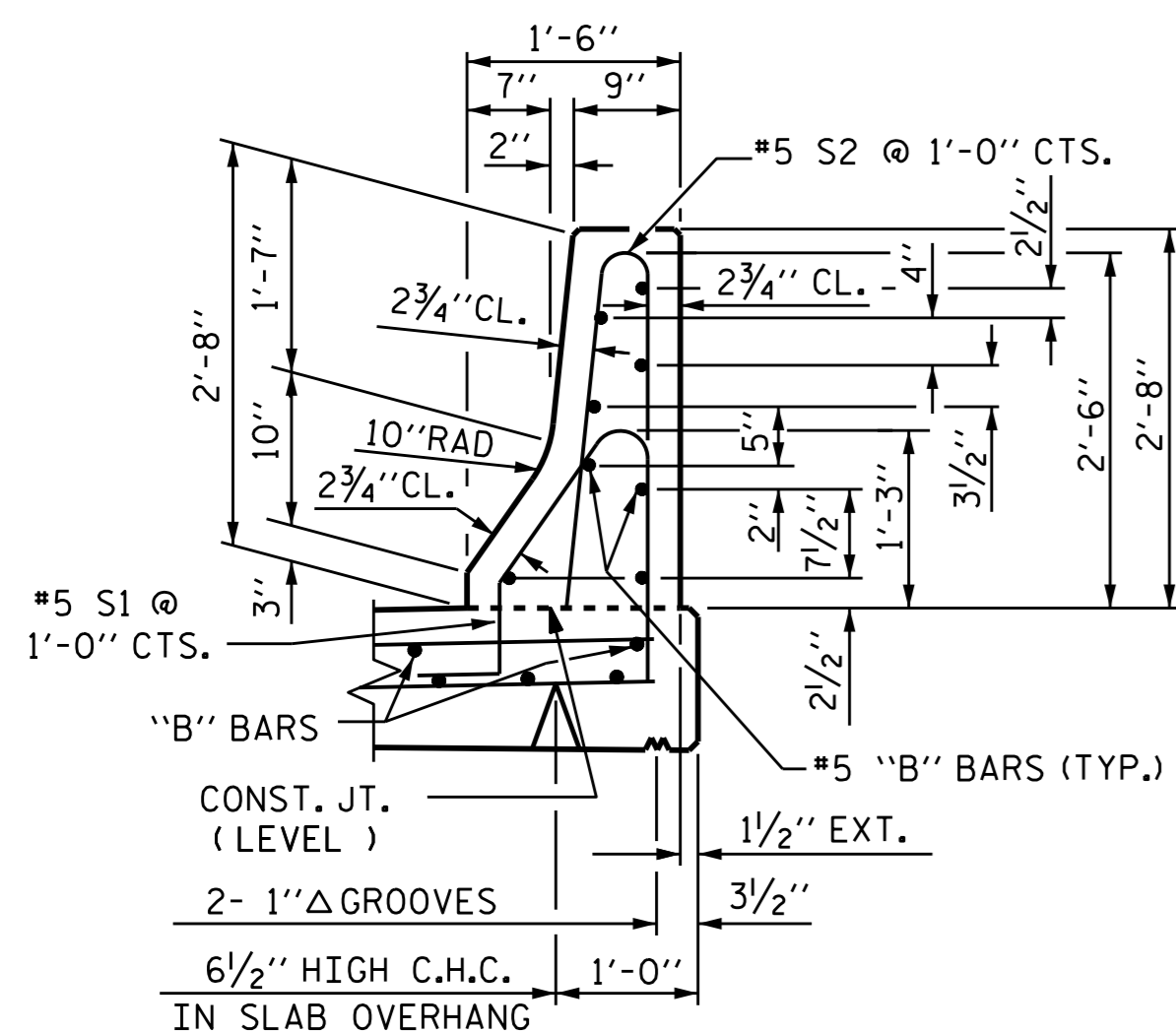
BILL OF MATERIAL

FOR CONCRETE BARRIER RAIL ONLY					
BAR	NO.	SIZE	TYPE	LENGTH	WEIGHT
* B1	56	#5	STR	24'-6"	1,431
* B2	16	#5	STR	17'-9"	296
* B3	32	#5	STR	10'-7"	353
* S1	247	#5	1	4'-8"	1,202
* S2	247	#5	2	5'-2"	1,331

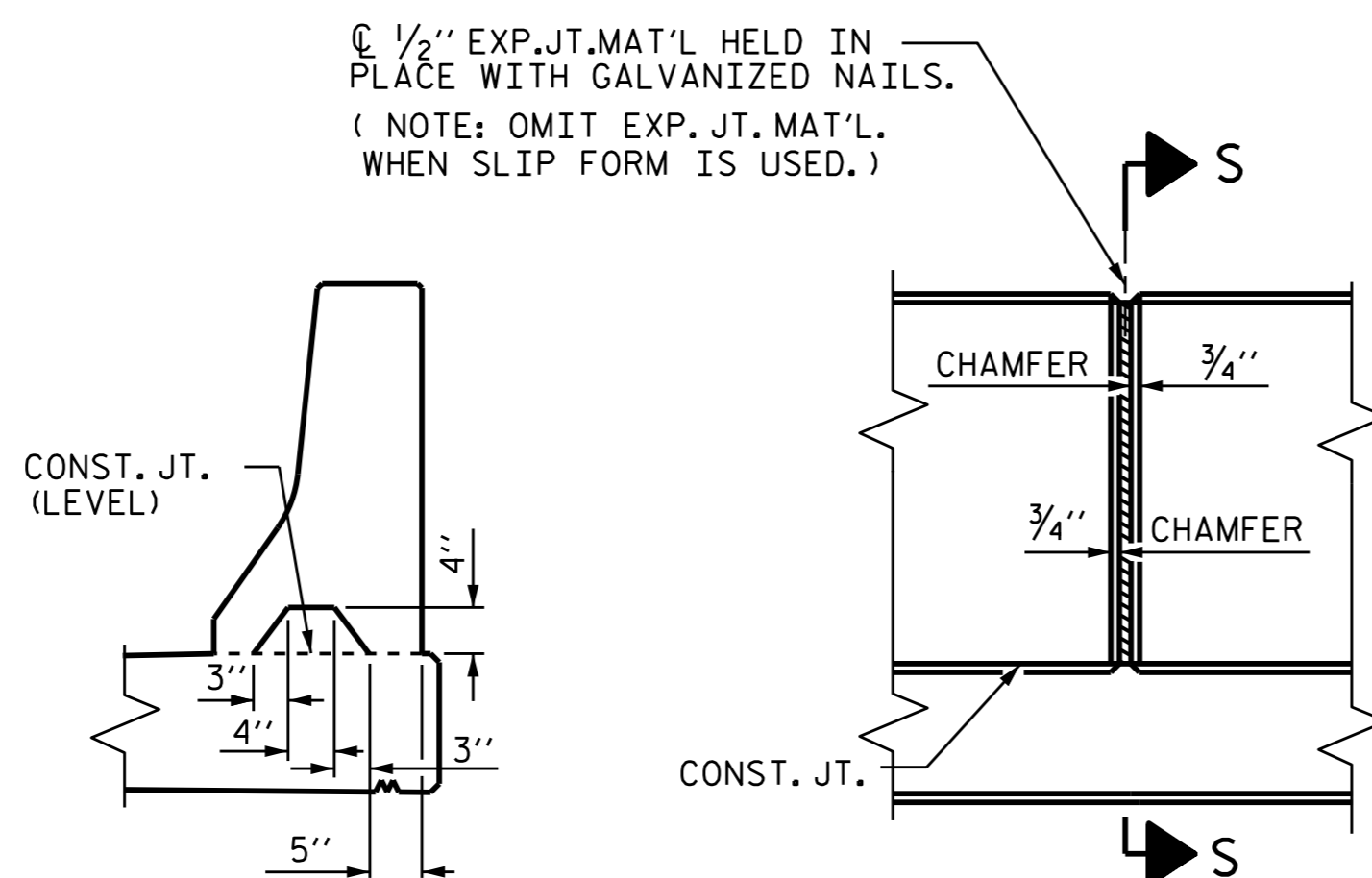
* EPOXY COATED REINFORCING STEEL LBS. 4,613

CLASS AA CONCRETE CU. YDS. 24.8

CONCRETE BARRIER RAIL LIN. FT. 247.63



SECTION THRU RAIL



ELEVATION AT EXPANSION JOINTS

SECTION S-S AT DAM IN OPEN JOINT (THIS IS TO BE USED ONLY WHEN SLIP FORM IS USED)

BARRIER RAIL DETAILS

PROJECT NO. R-2514D
 JONES & CRAVEN COUNTY
 STATION: 625+23.28 -L-



STATE OF NORTH CAROLINA
 DEPARTMENT OF TRANSPORTATION
 RALEIGH
 CONCRETE BARRIER RAIL

DRAWN BY: B. N. BARODAWALA DATE: 2-18-14
 CHECKED BY: NEIL RUFFIN DATE: 8-22-14
 DESIGN ENGINEER OF RECORD: K. P. SEDAII DATE: 10-31-14

REVISIONS						SHEET NO.	
NO.	BY:	DATE:	NO.	BY:	DATE:	S18-020	
1			3			TOTAL SHEETS	
2			4			39	