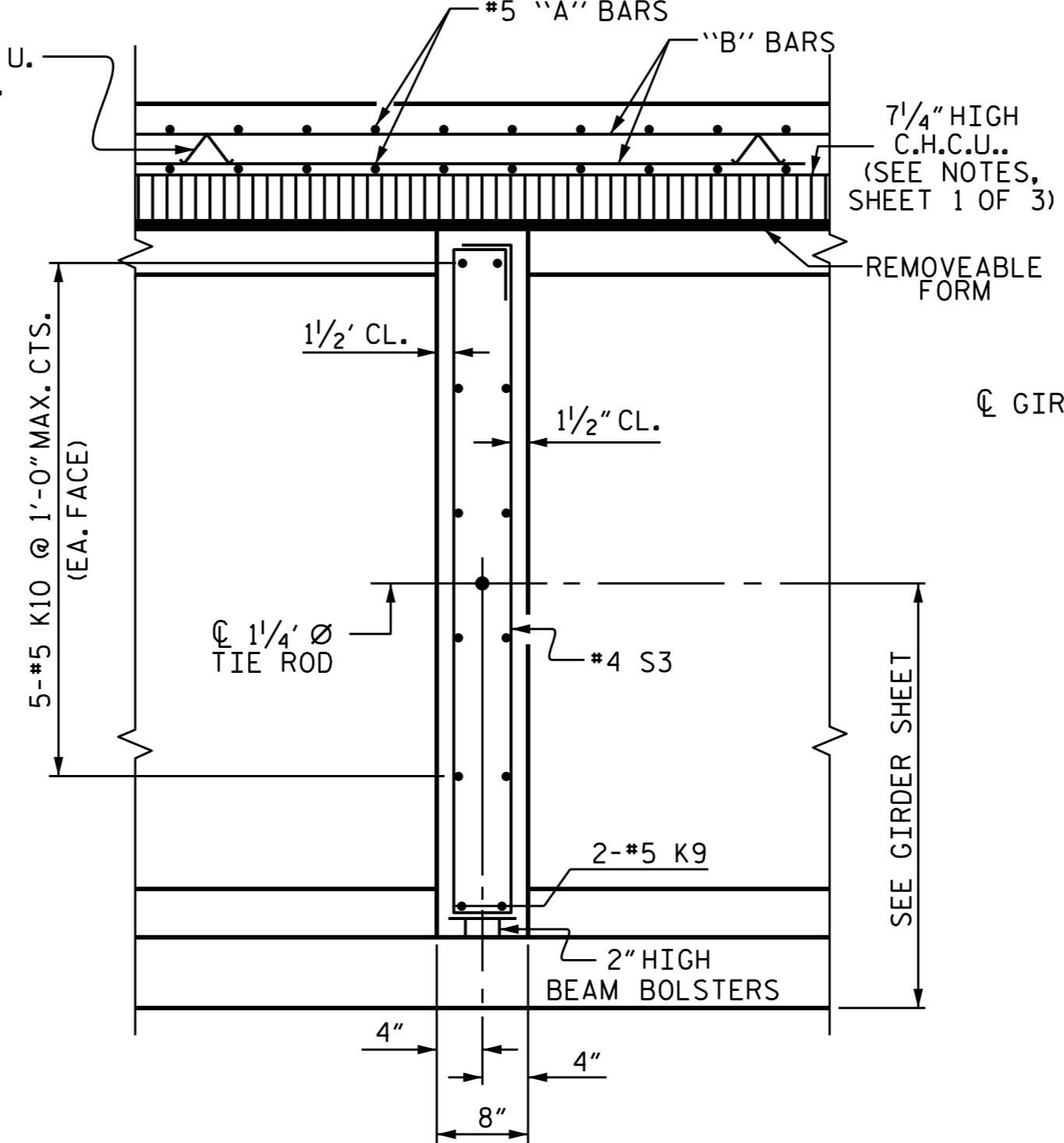
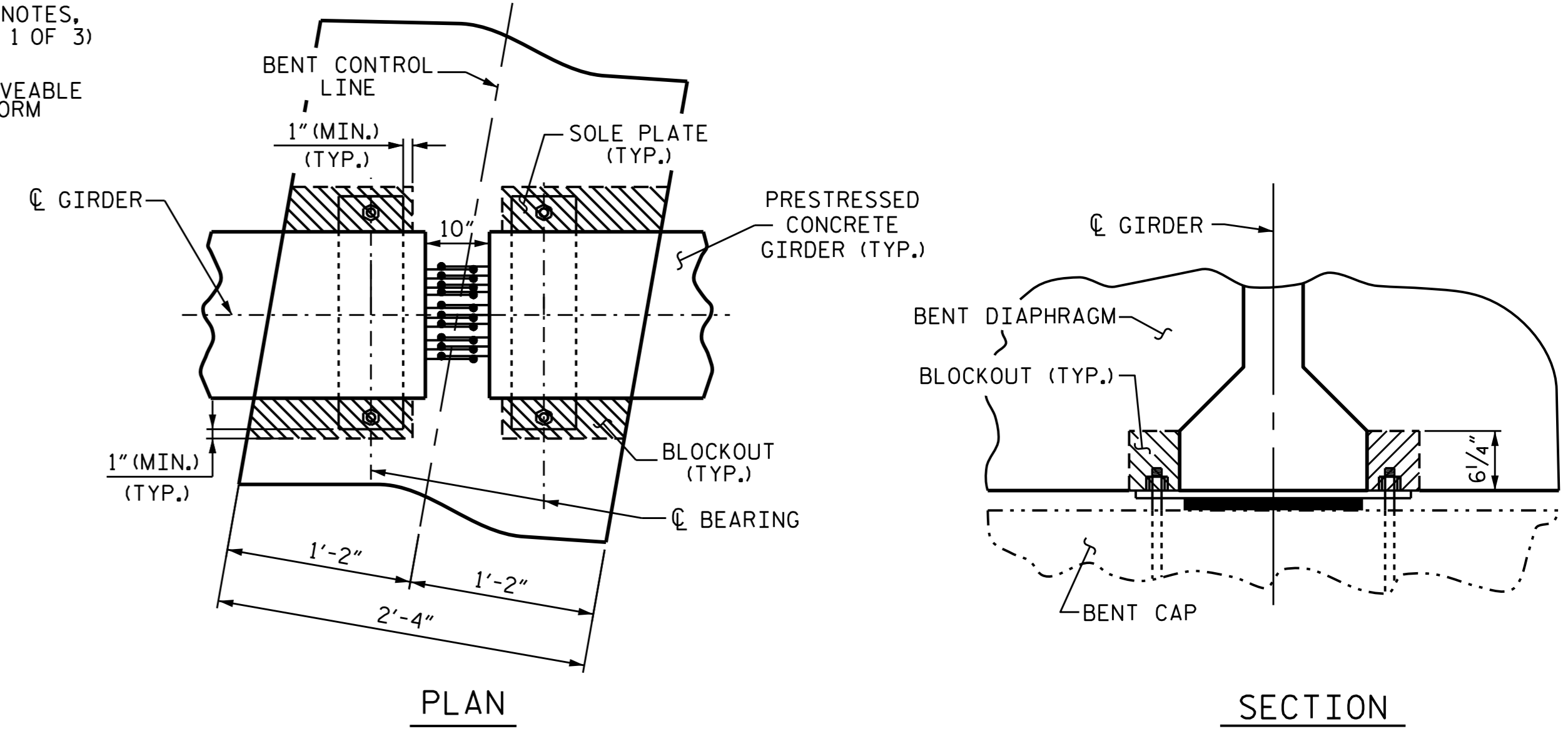


SECTION THROUGH INTEGRAL END BENT

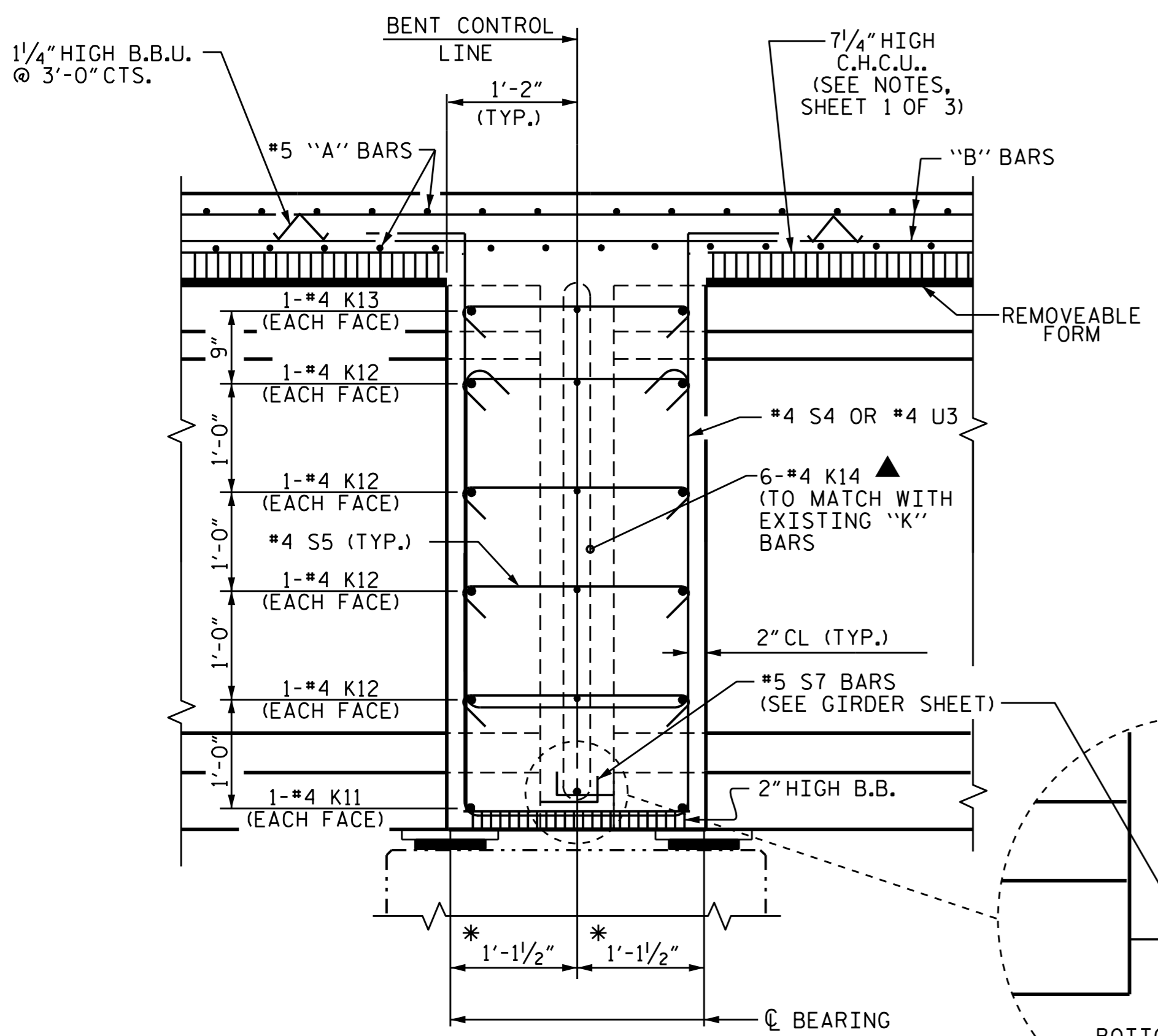
#4 V1 BARS IN FRONT OF GIRDER NOT SHOWN
 * TO MATCH WITH EXISTING APPROACH SLAB



SECTION THROUGH INTERMEDIATE DIAPHRAGM

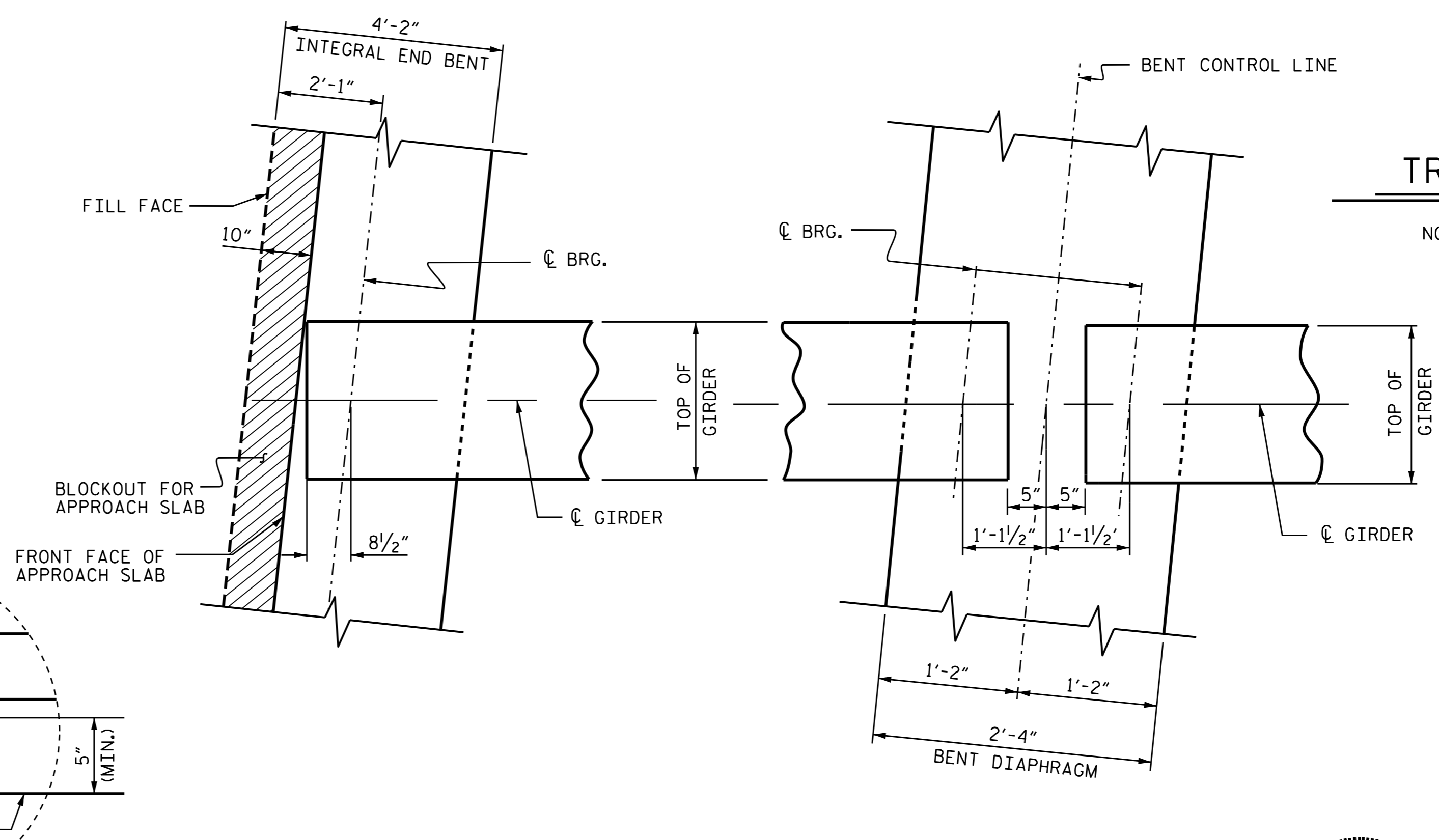


BENT DIAPHRAGM BLOCK-OUT DETAIL

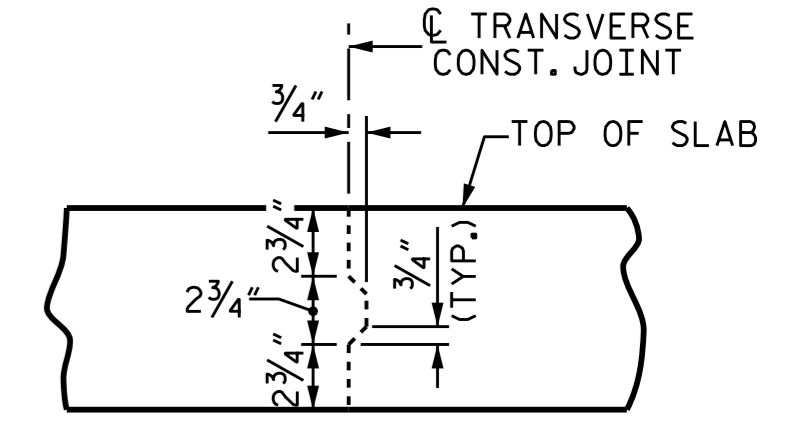


SECTION THROUGH CONTINUOUS BENT DIAPHRAGM

* MEASURED ALONG C GIRDER



PLAN OF GIRDER



TRANSVERSE CONSTRUCTION JOINT DETAIL

NOTE: REINFORCING STEEL IN SLAB NOT SHOWN. LONGITUDINAL REINFORCING STEEL SHALL BE CONTINUOUS THROUGH JOINT.

PROJECT NO. R-2514D
 JONES & CRAVEN COUNTY
 STATION: 625+23.28 -L-

SHEET 3 OF 3

STATE OF NORTH CAROLINA
 DEPARTMENT OF TRANSPORTATION
 RALEIGH

SUPERSTRUCTURE
 TYPICAL SECTION



DRAWN BY: B.N. BARODAWALA DATE: 2-18-14
 CHECKED BY: NEIL RUFFIN DATE: 8-14-14
 DESIGN ENGINEER OF RECORD: K. P. SEDAI DATE: 10-31-14

REVISIONS						SHEET NO.
NO.	BY:	DATE:	NO.	BY:	DATE:	S18-007
1			3			TOTAL SHEETS
2			4			39