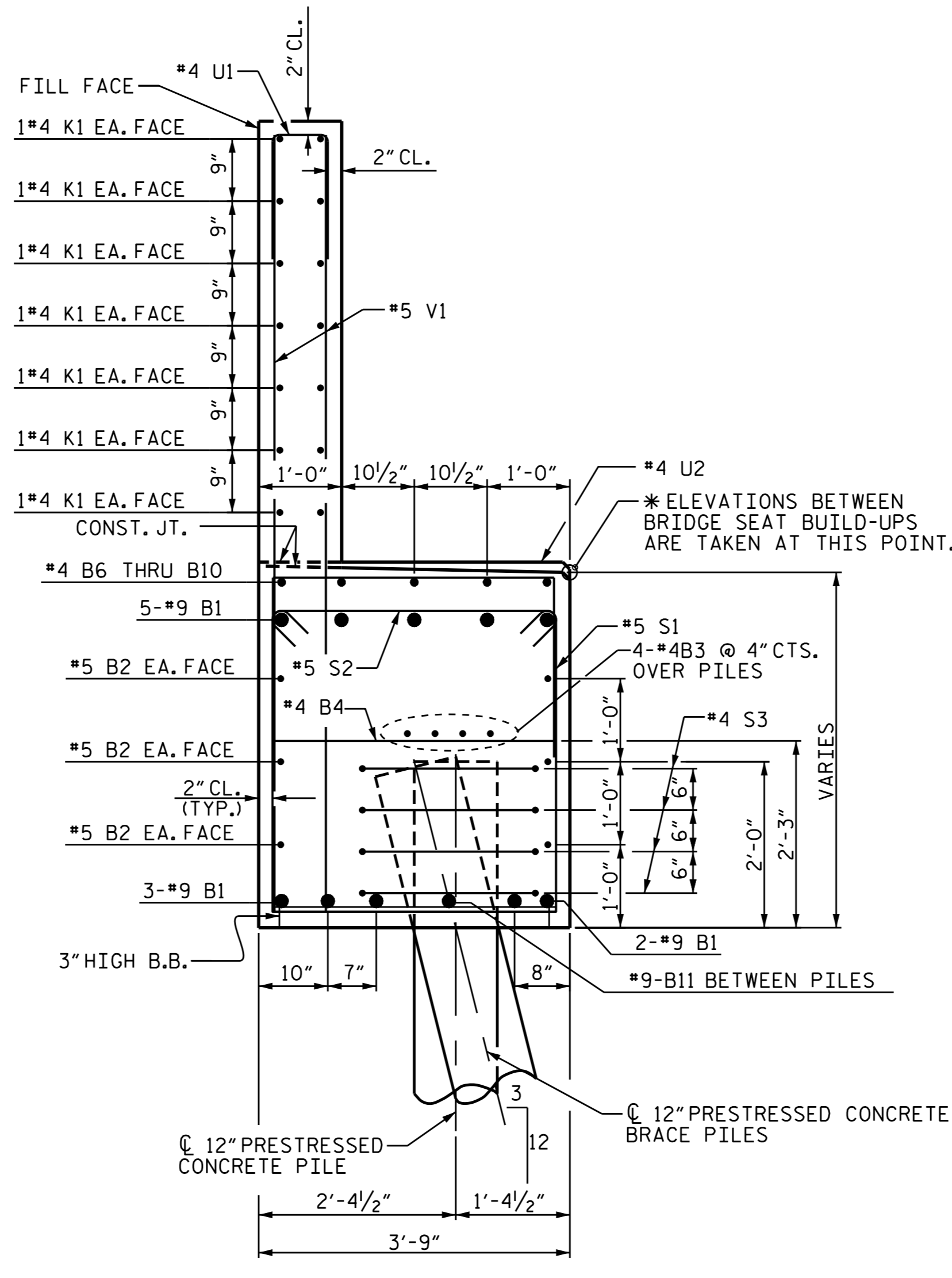
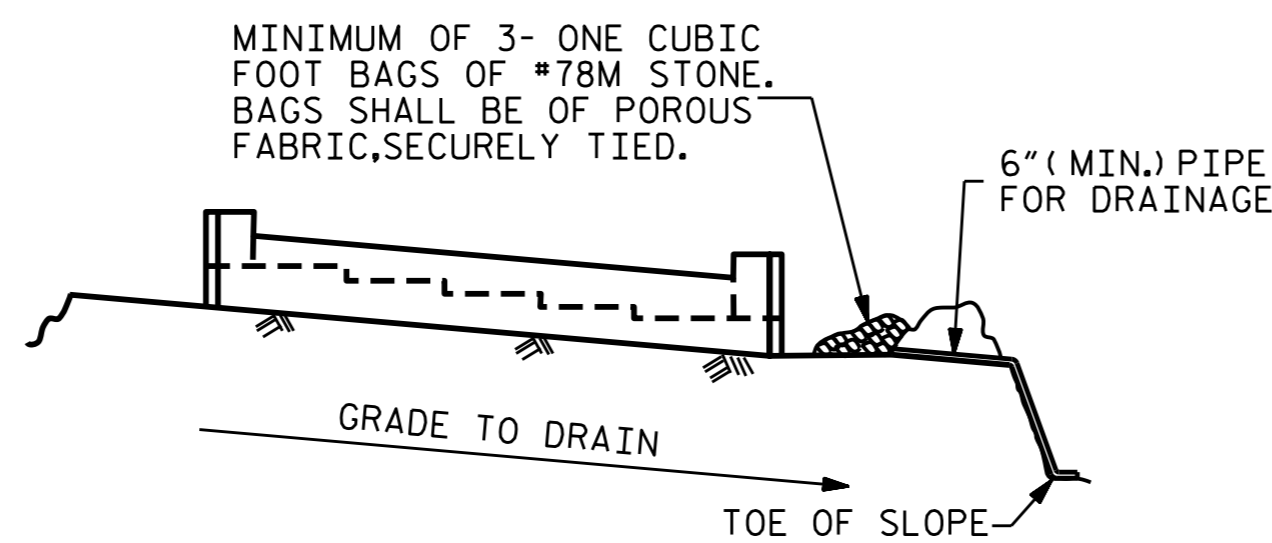


SECTION A-A



SECTION B-B

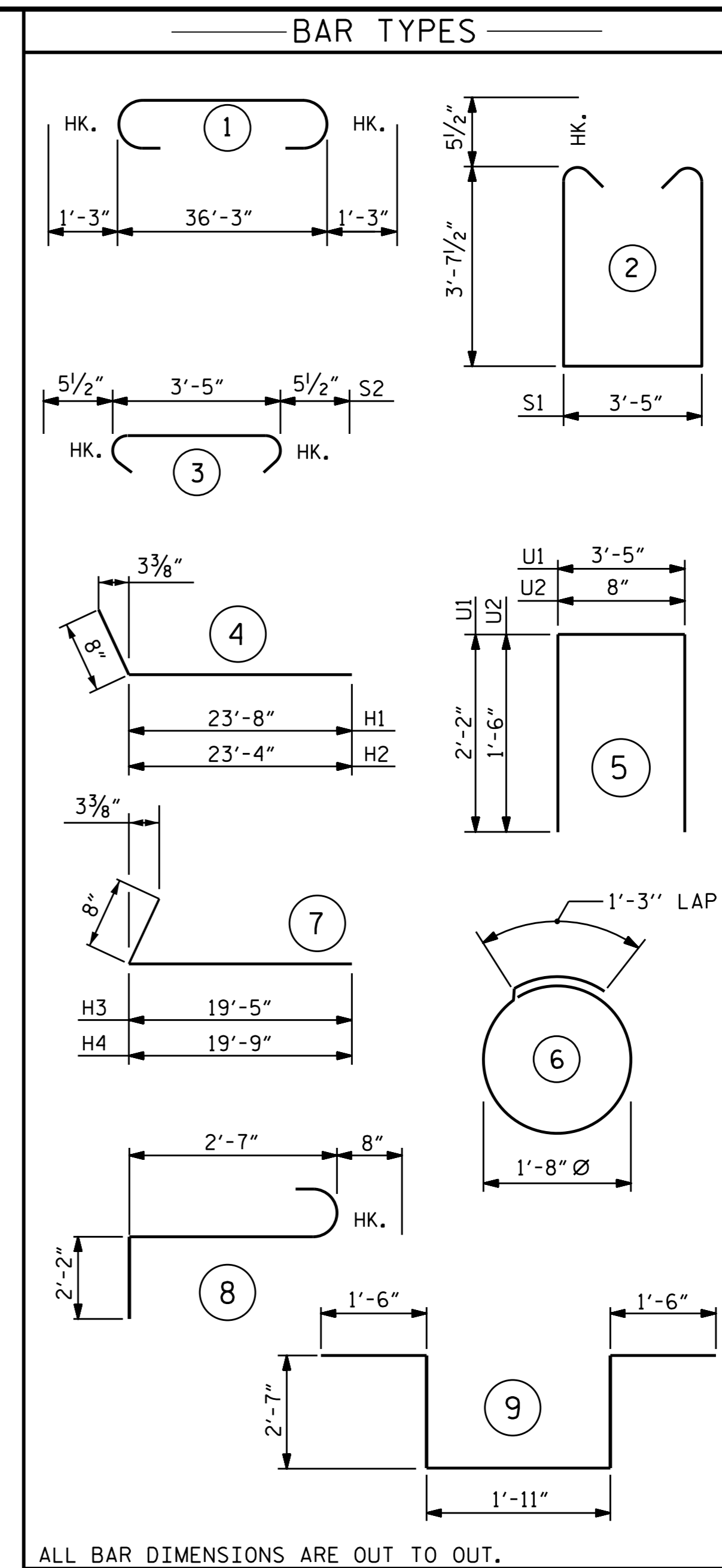


BAGGED STONE AND PIPE SHALL BE PLACED IMMEDIATELY AFTER COMPLETION OF END BENT EXCAVATION. PIPE MAY BE EITHER CONCRETE, CORRUGATED STEEL, CORRUGATED ALUMINUM ALLOY, OR CORRUGATED PLASTIC. PERFORATED PIPE WILL NOT BE ALLOWED.

BAGGED STONE SHALL REMAIN IN PLACE UNTIL THE ENGINEER DIRECTS THAT IT BE REMOVED. THE CONTRACTOR SHALL REMOVE AND DISPOSE OF SILT ACCUMULATIONS AT BAGGED STONE WHEN SO DIRECTED BY THE ENGINEER. BAGS SHALL BE REMOVED AND REPLACED WHENEVER THE ENGINEER DETERMINES THAT THEY HAVE DETERIORATED AND LOST THEIR EFFECTIVENESS.

NO SEPARATE PAYMENT WILL BE MADE FOR THIS WORK AND THE ENTIRE COST OF THIS WORK SHALL BE INCLUDED IN THE UNIT CONTRACT PRICE BID FOR THE SEVERAL PAY ITEMS.

TEMPORARY DRAINAGE AT END BENT



BILL OF MATERIAL						
BAR NO.	NO.	SIZE	TYPE	LENGTH	WEIGHT	
B1	10	#9	1	38'-9"	1318	
B2	6	#5	STR	36'-5"	228	
B3	8	#4	STR	19'-5"	104	
B4	9	#4	STR	3'-5"	20	
B5	5	#4	STR	12'-8"	42	
B6	1	#4	STR	8'-1"	5	
B7	1	#4	STR	8'-3"	6	
B8	1	#4	STR	9'-0"	6	
B9	1	#4	STR	9'-3"	6	
B10	1	#4	STR	9'-7"	6	
B11	5	#9	STR	5'-4"	91	
H1	15	#4	4	24'-4"	244	
H2	15	#4	4	24'-0"	240	
H3	14	#4	7	20'-1"	188	
H4	14	#4	7	20'-5"	191	
K1	28	#5	STR	19'-5"	567	
K2	8	#4	STR	2'-11"	16	
S1	32	#5	2	11'-7"	387	
S2	32	#5	3	4'-4"	145	
S3	24	#4	6	6'-6"	104	
S4	6	#6	8	5'-5"	49	
S5	2	#6	9	10'-1"	30	
U1	31	#4	5	3'-8"	76	
U2	16	#4	5	6'-5"	69	
V1	62	#5	STR	8'-11"	577	
V2	54	#5	STR	11'-2"	629	
V3	46	#5	STR	10'-11"	524	

REINFORCING STEEL	5868 LBS.
CLASS A CONCRETE BREAKDOWN	
POUR #1 CAP, WING BRACE & LOWER PART OF WINGS	▲ 28.7 CU. YDS.
POUR #2 BACKWALL & UPPER PART OF WINGS	18.7 CU. YDS.
TOTAL CLASS A CONCRETE	47.4 CU. YDS.
12" PRESTRESSED CONCRETE PILES NO. 8	280 LIN. FT.
PILE REDRIVES	3 EACH

▲-CONCRETE DISPLACED BY THE 12" P/S CONCRETE PILES HAS BEEN DEDUCTED FROM THE CONCRETE QUANTITY.

PROJECT NO. R-2514D
 JONES/CRAVEN COUNTY
 STATION: 19+43.00 -Y10-

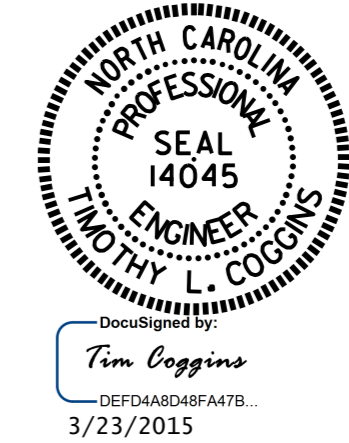
SHEET 3 OF 3

STATE OF NORTH CAROLINA
 DEPARTMENT OF TRANSPORTATION
 RALEIGH

SUBSTRUCTURE
 END BENT 2

REVISIONS					
NO.	BY:	DATE:	NO.	BY:	DATE:
1			3		
2			4		

SHEET NO. S17-026
 TOTAL SHEETS 32



DRAWN BY: GHOLAMREZA KOUCHEKI DATE: 10/21/14
 CHECKED BY: M.D. PISO DATE: 10/22/14
 DESIGN ENGINEER OF RECORD: NEIL RUFFIN DATE: 1/29/15