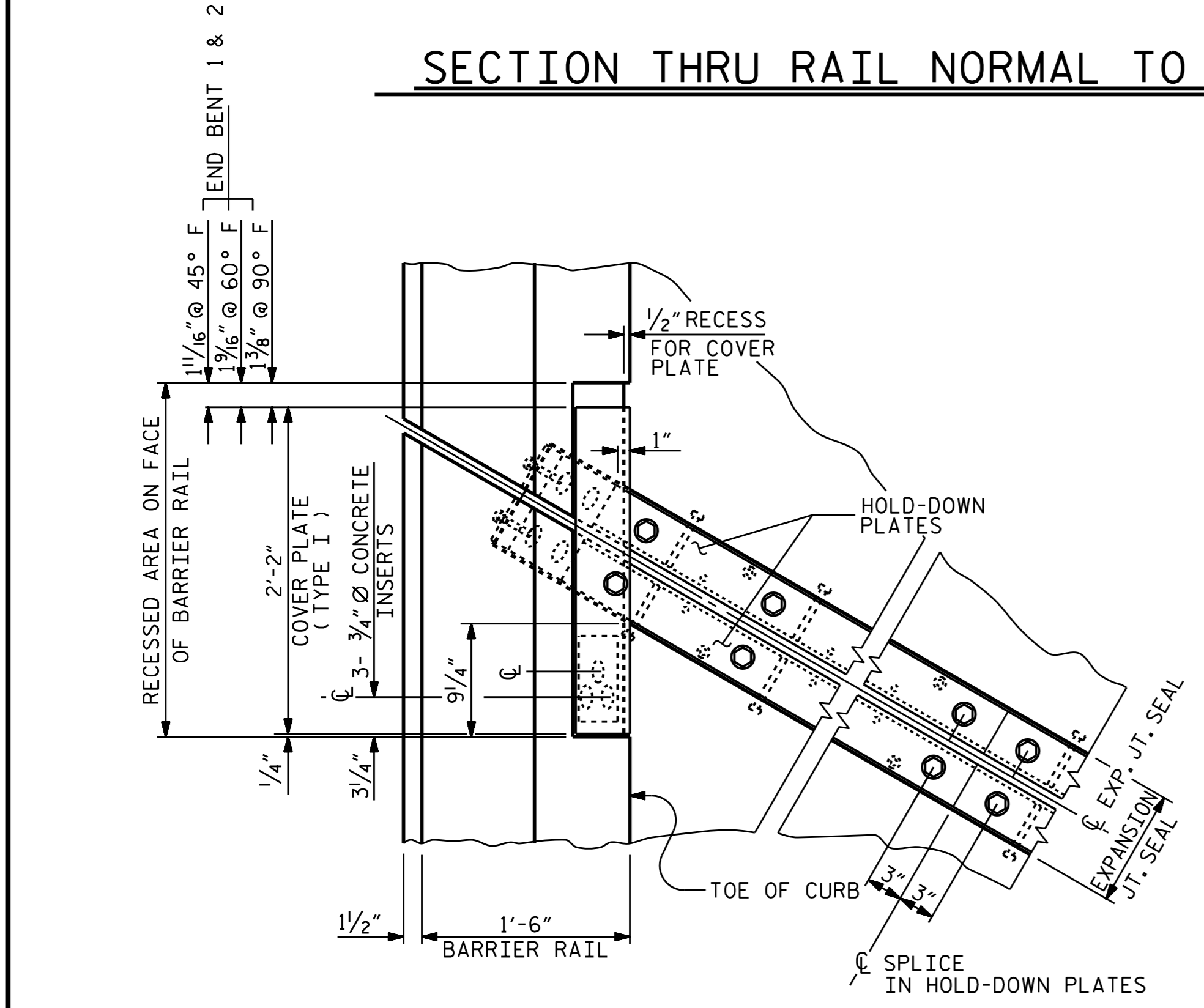
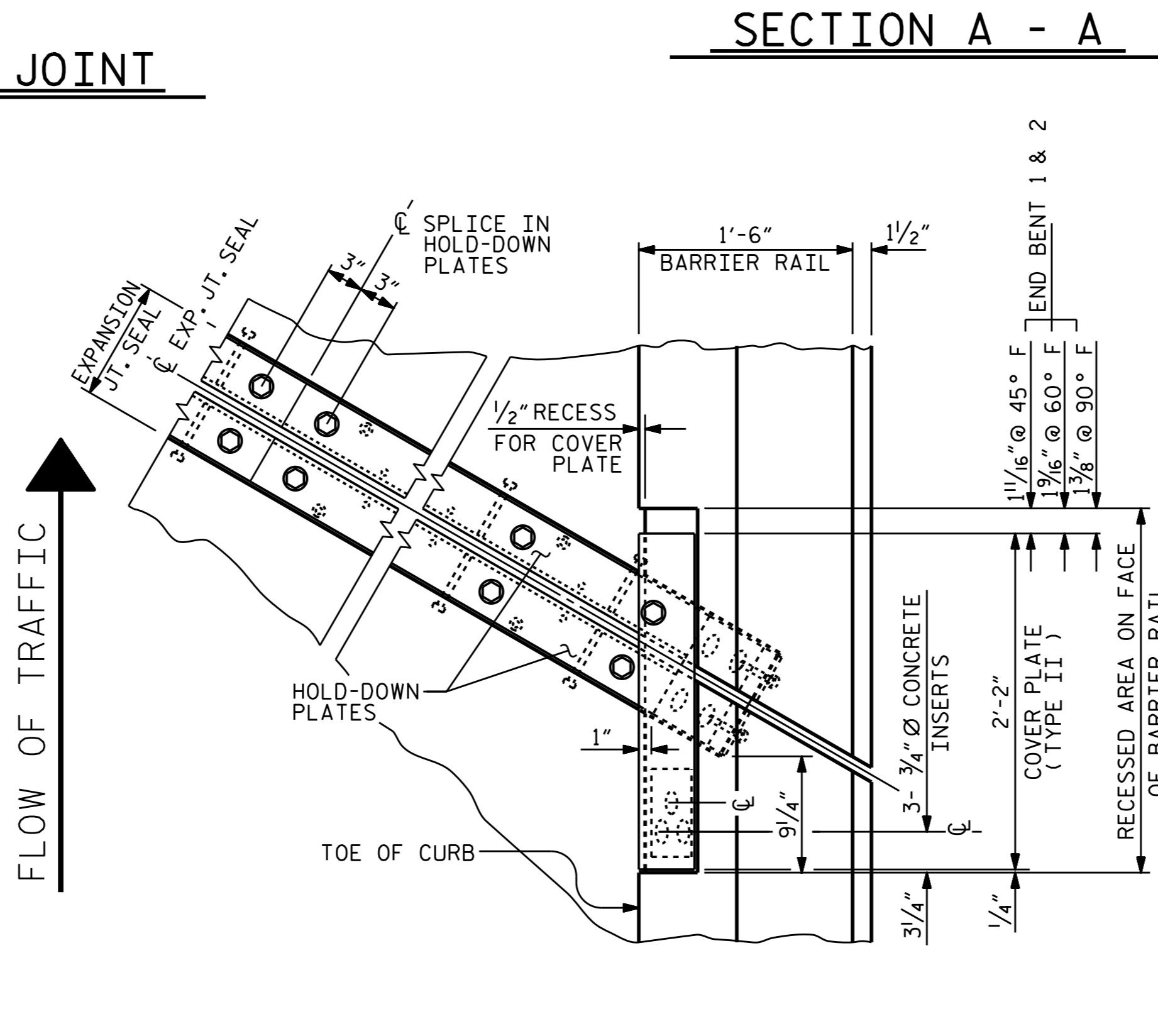


**SECTION THRU RAIL NORMAL TO JOINT**



**PLAN OF EXPANSION JOINT SEAL**

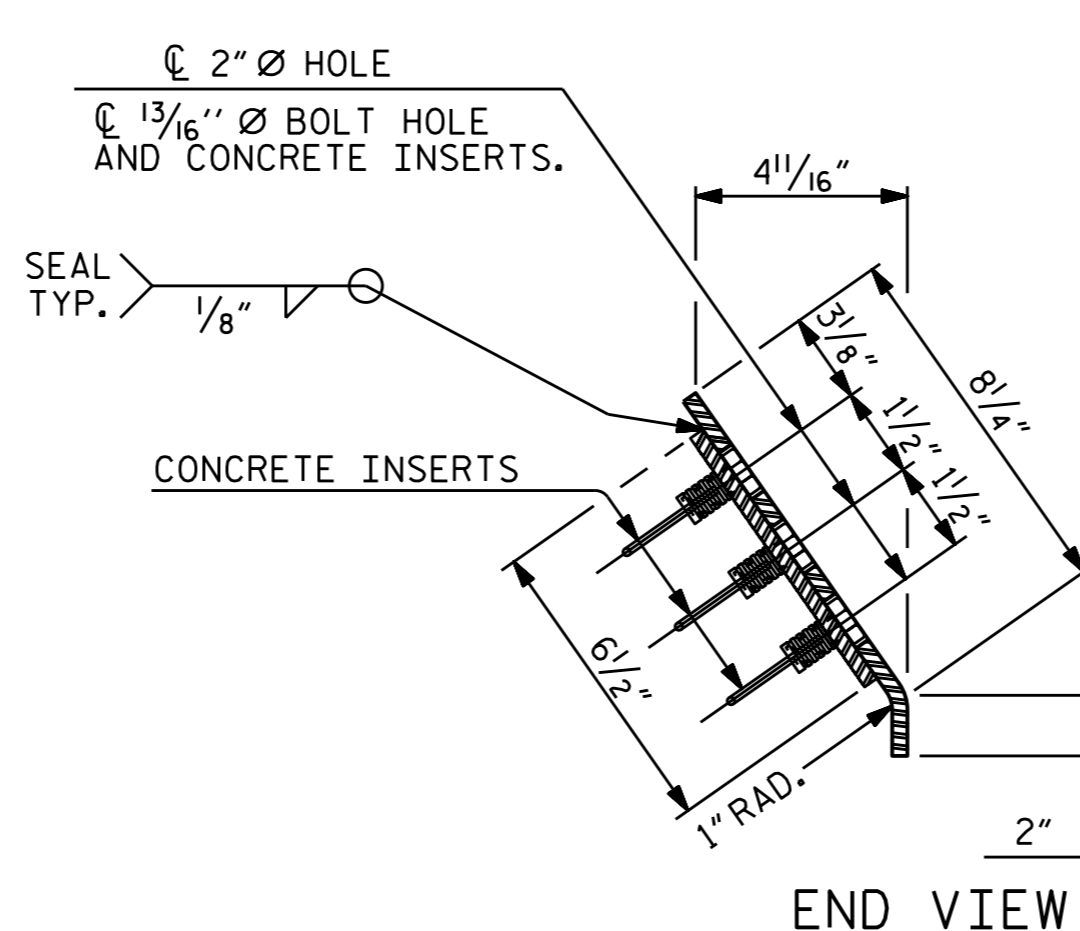


**SECTION A - A**

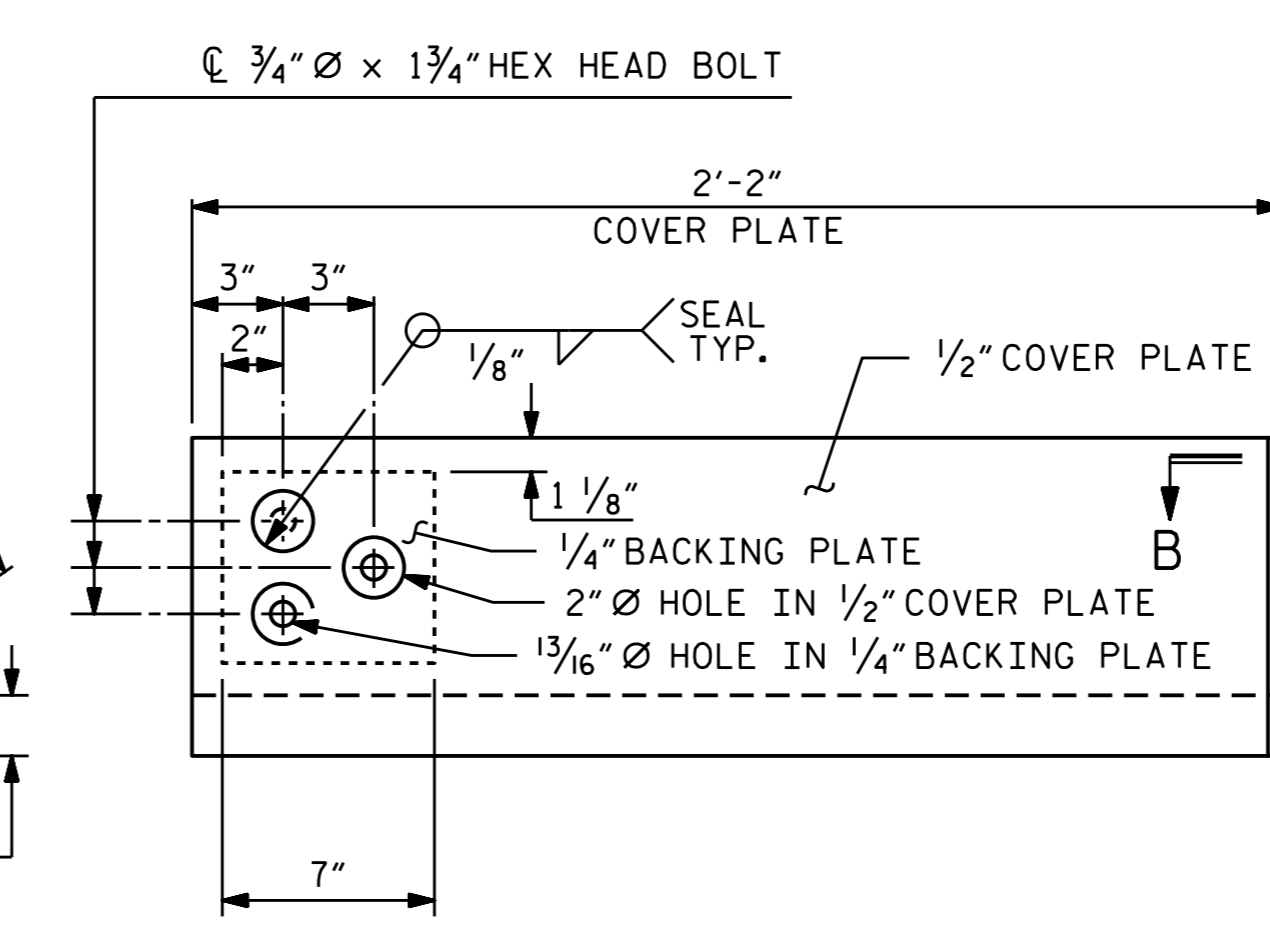
ASSEMBLED BY: *N. Ruffin* DATE: 6/27/13  
 CHECKED BY: M. PISO DATE: 3/14/14  
 DRAWN BY: REK 9/87  
 CHECKED BY: CRK 10/87

REV. 10/1/11 MAA/GM  
 REV. 7/12 MAA/GM  
 REV. 10/12 MAA/GM

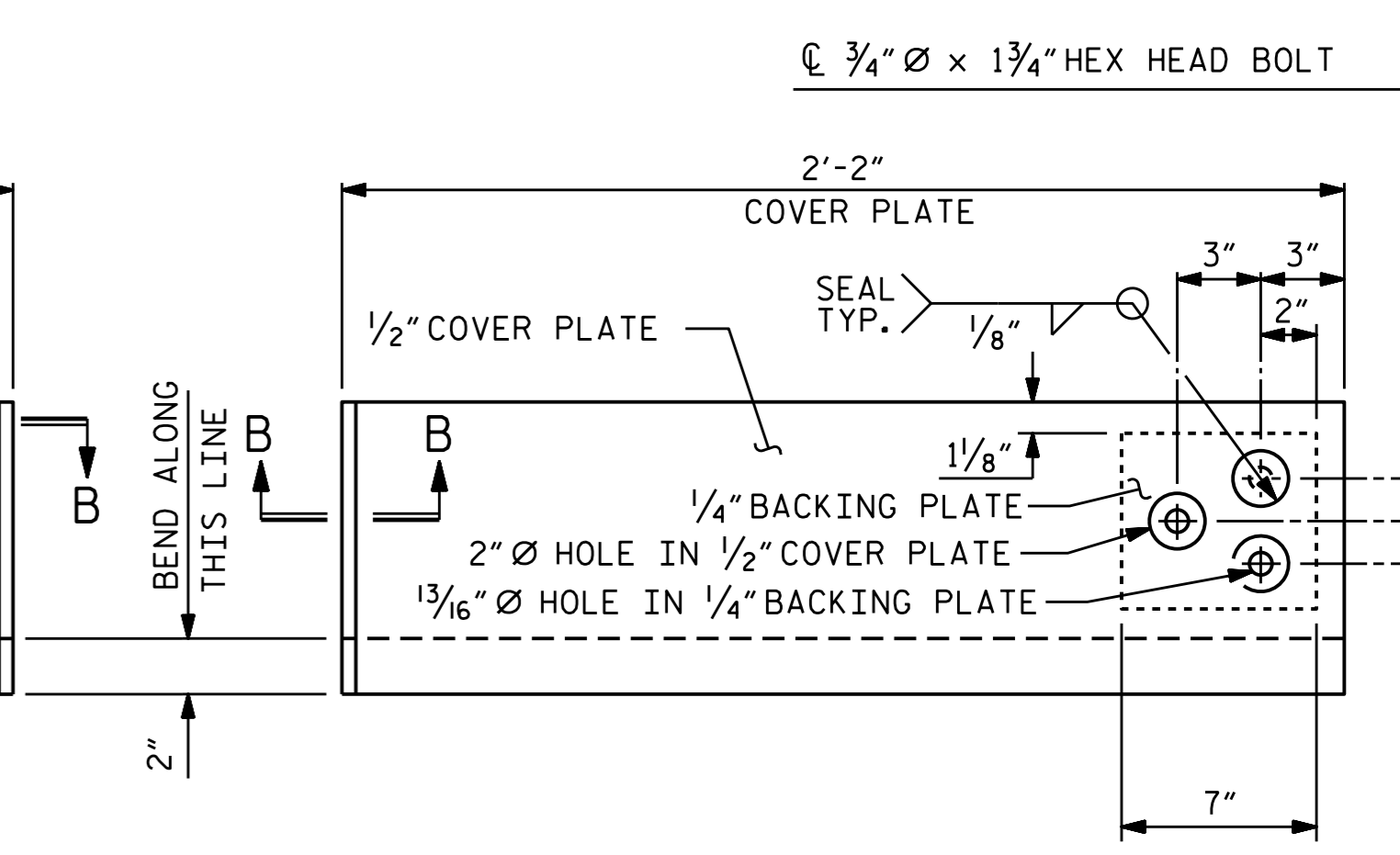
ENGINEER OF RECORD: *N. RUFFIN* DATE: 1/28/15



**END VIEW**

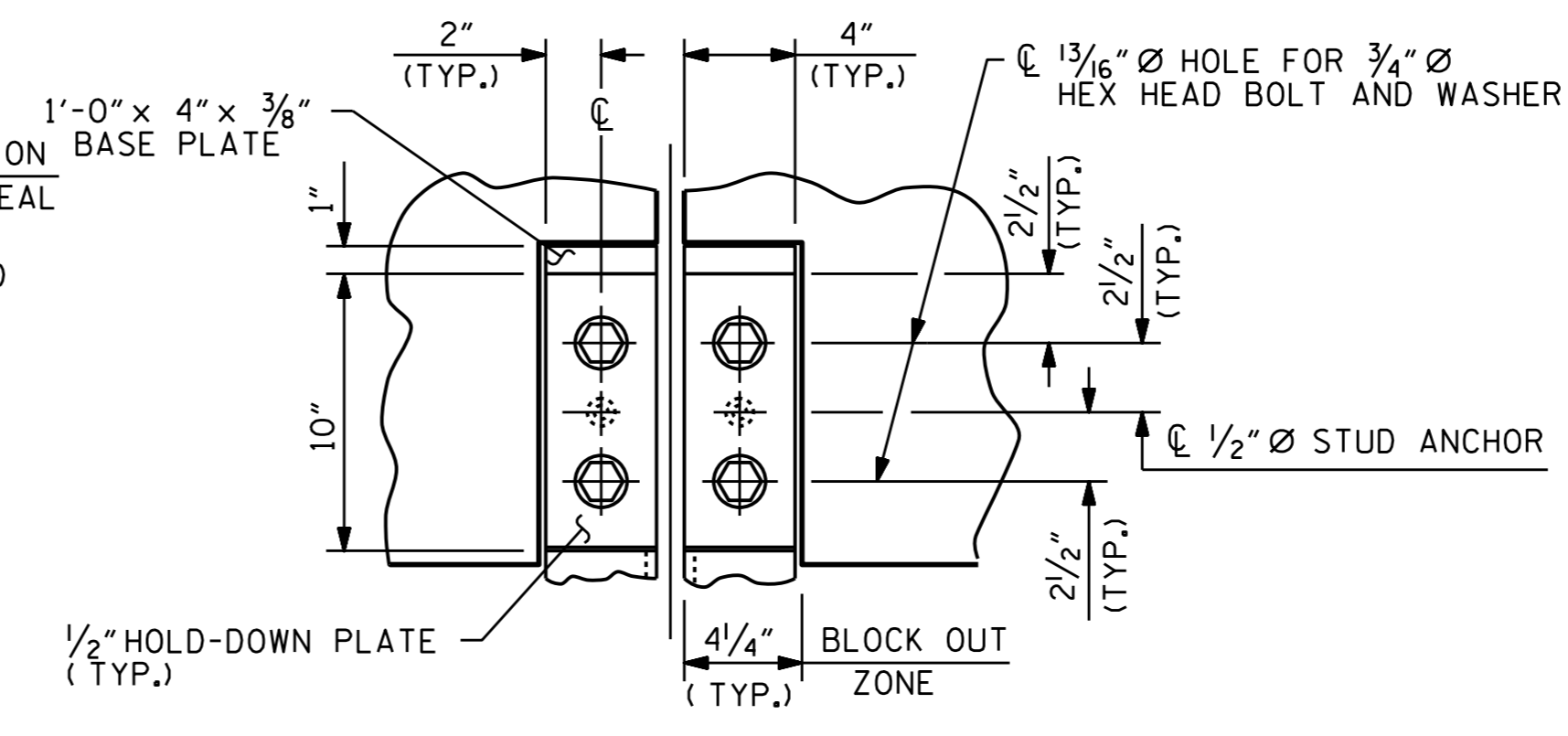


**TYPE I - ELEVATION VIEW**

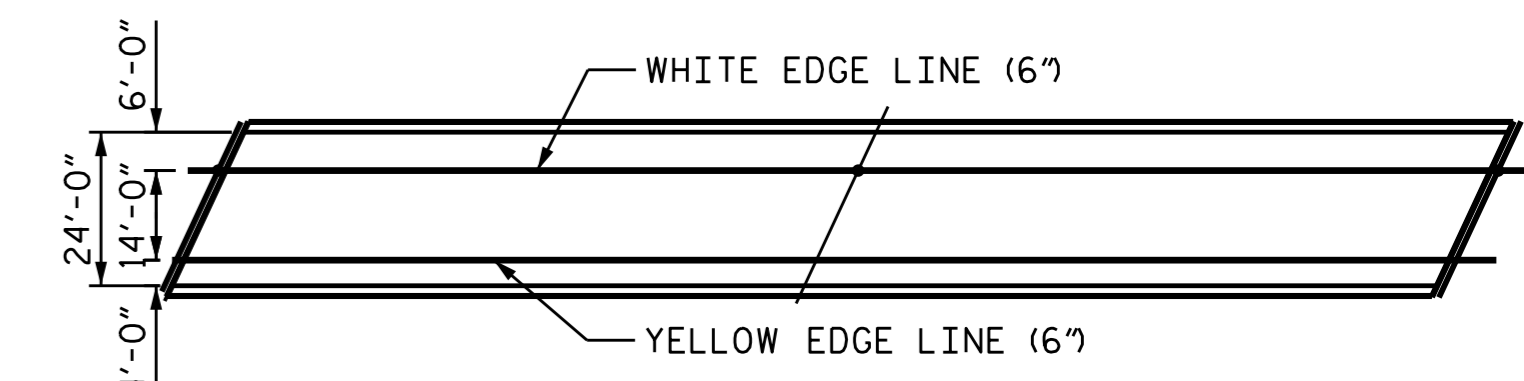


**TYPE II - ELEVATION VIEW**

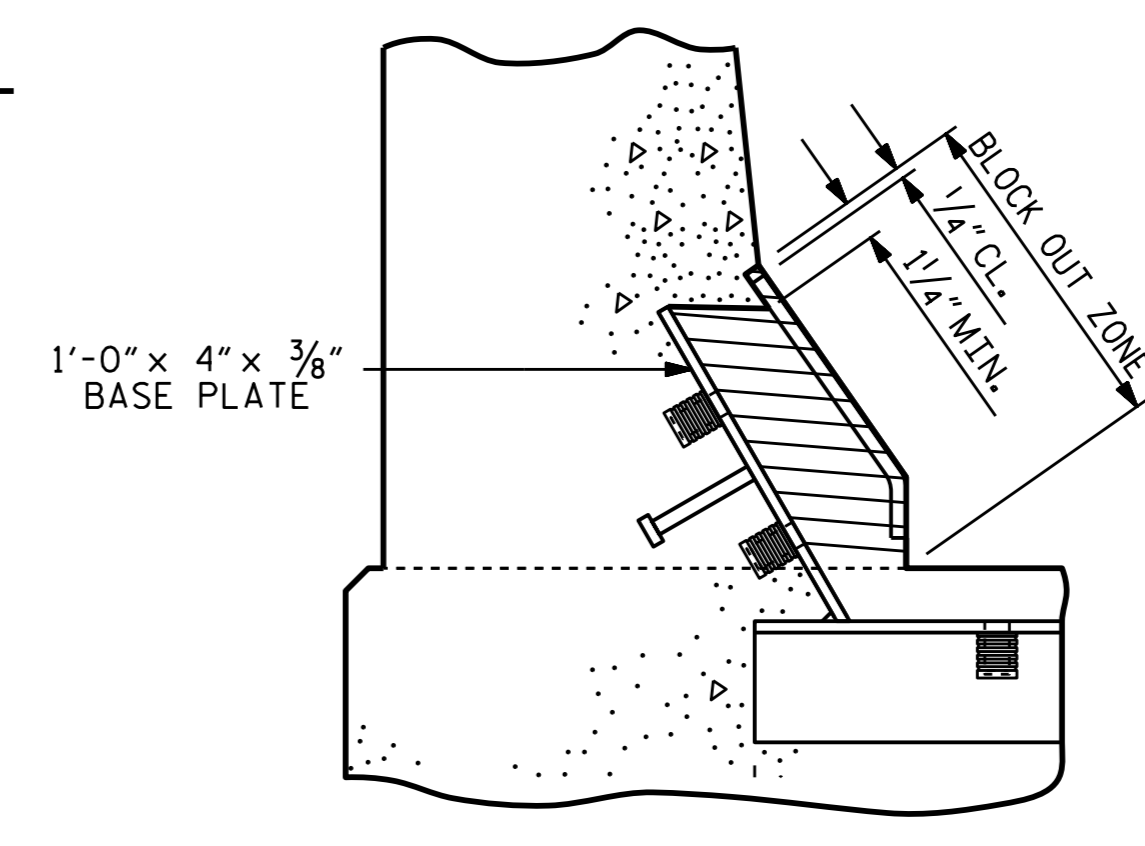
**COVER PLATE DETAILS**



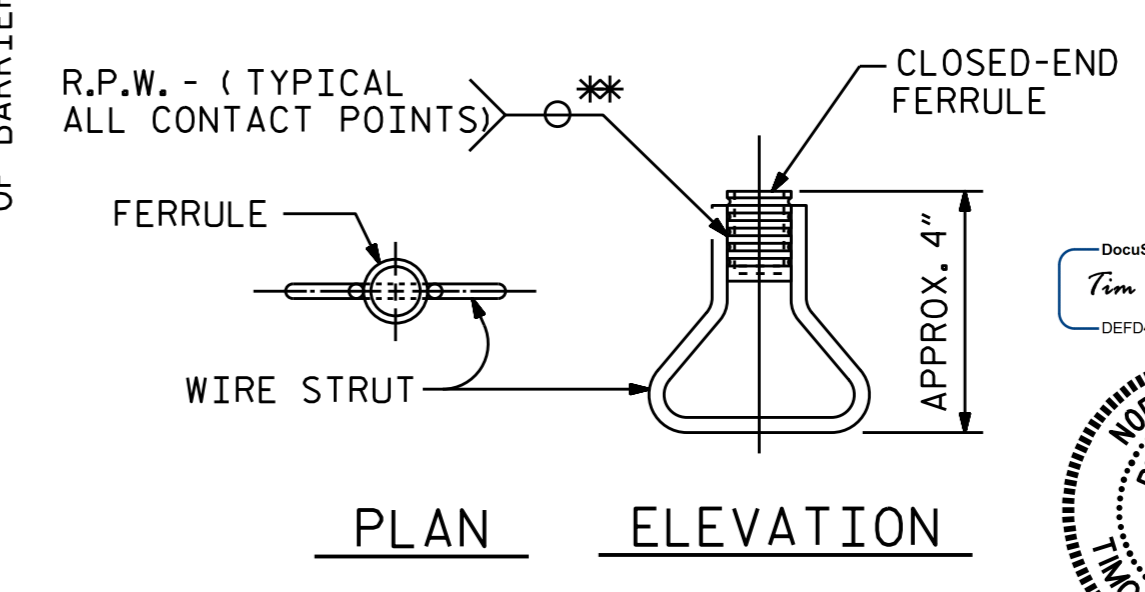
**SECTION A - A**



**PAVEMENT MARKING ALIGNMENT**



**BLOCK OUT DETAIL**



**CONCRETE INSERT**

\* EACH WELDED ATTACHMENT OF WIRE TO FERRULE SHALL DEVELOP THE TENSILE STRENGTH OF THE WIRE.

PROJECT NO. R-2514D  
 JONES & CRAVEN COUNTY  
 STATION: 19+43.00 - Y10RPA-

SHEET 2 OF 2

STATE OF NORTH CAROLINA  
 DEPARTMENT OF TRANSPORTATION  
 RALEIGH  
 STANDARD  
 EXPANSION JOINT  
 SEAL DETAILS  
 FOR BARRIER RAIL

| REVISIONS |     |       |     |     |       | SHEET NO.       |  |
|-----------|-----|-------|-----|-----|-------|-----------------|--|
| NO.       | BY: | DATE: | NO. | BY: | DATE: | S17-017         |  |
| 1         |     |       | 3   |     |       | TOTAL SHEETS 32 |  |
| 2         |     |       | 4   |     |       |                 |  |

