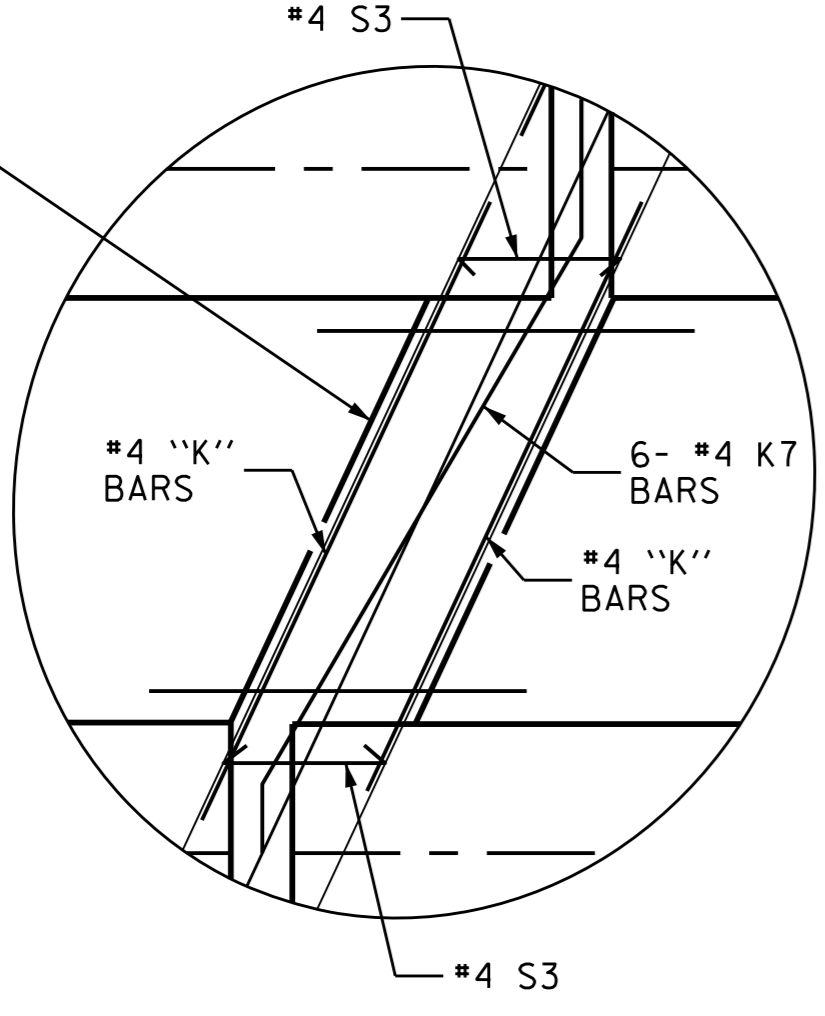
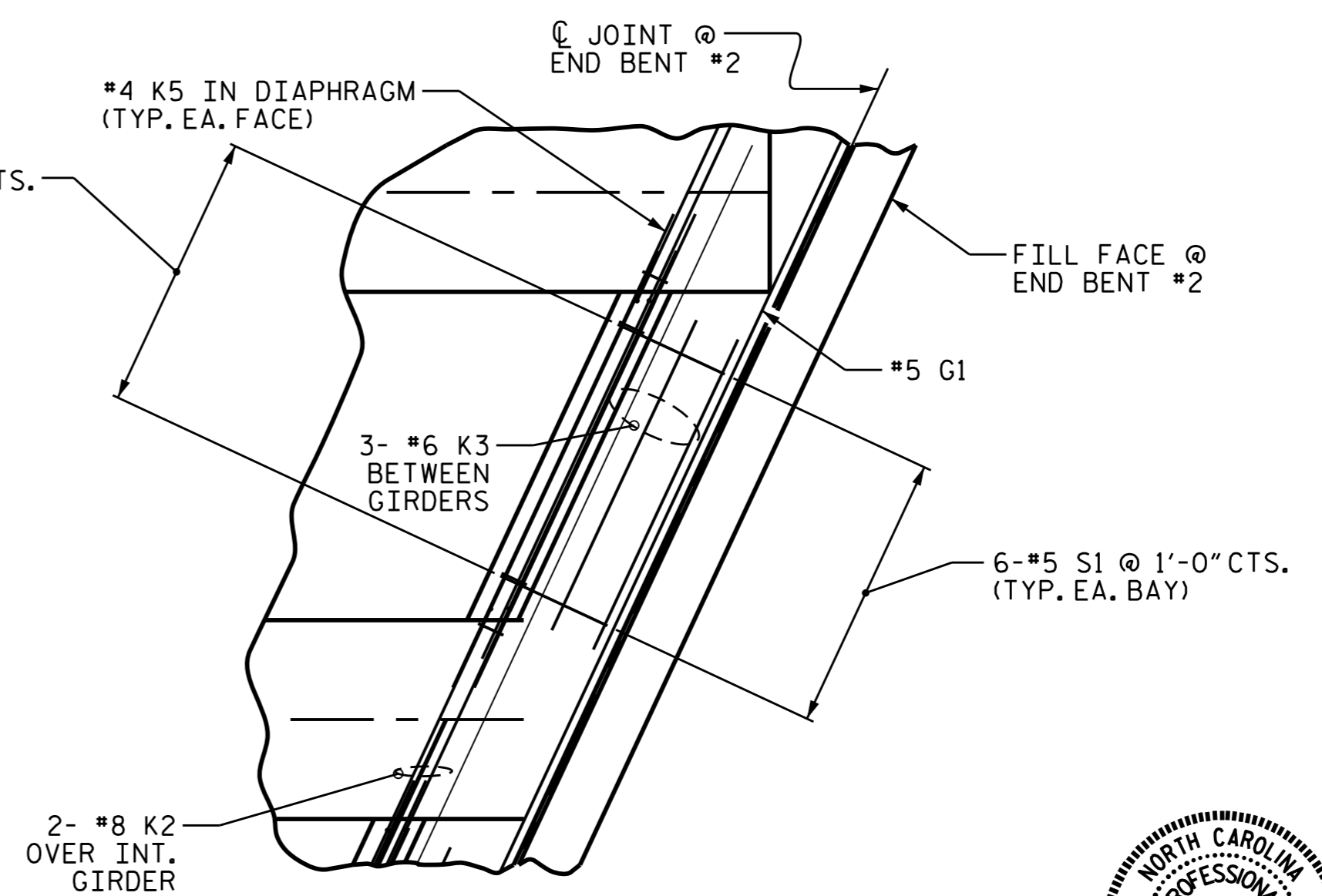


SPAN B



DETAIL "D"

SEE "SECTION THRU BENTS DIAPHRAGM" OF TYPICAL SECTION SHEET 2 OF 2



DETAIL "C"

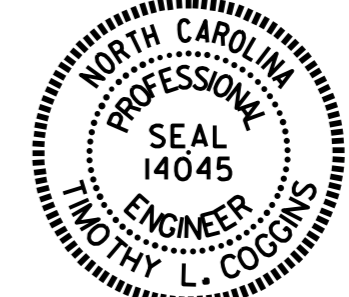
SEE "SECTION THRU END BENTS" OF TYPICAL SECTION SHEET 2 OF 2

PROJECT NO. R-2514D
JONES & CRAVEN COUNTY
 STATION: 19+43.00 -Y1ORPA-

SHEET 2 OF 2

STATE OF NORTH CAROLINA
 DEPARTMENT OF TRANSPORTATION
 RALEIGH

SUPERSTRUCTURE
 PLAN OF SPANS
 SPAN B



REVISIONS						SHEET NO.	
NO.	BY:	DATE:	NO.	BY:	DATE:	S17-008	
1			3			TOTAL SHEETS	
2			4			32	

DRAWN BY: N. RUFFIN DATE: 7/15/13
 CHECKED BY: M. PISO DATE: 3/14/14
 DESIGN ENGINEER OF RECORD: N. RUFFIN DATE: 1/28/15