

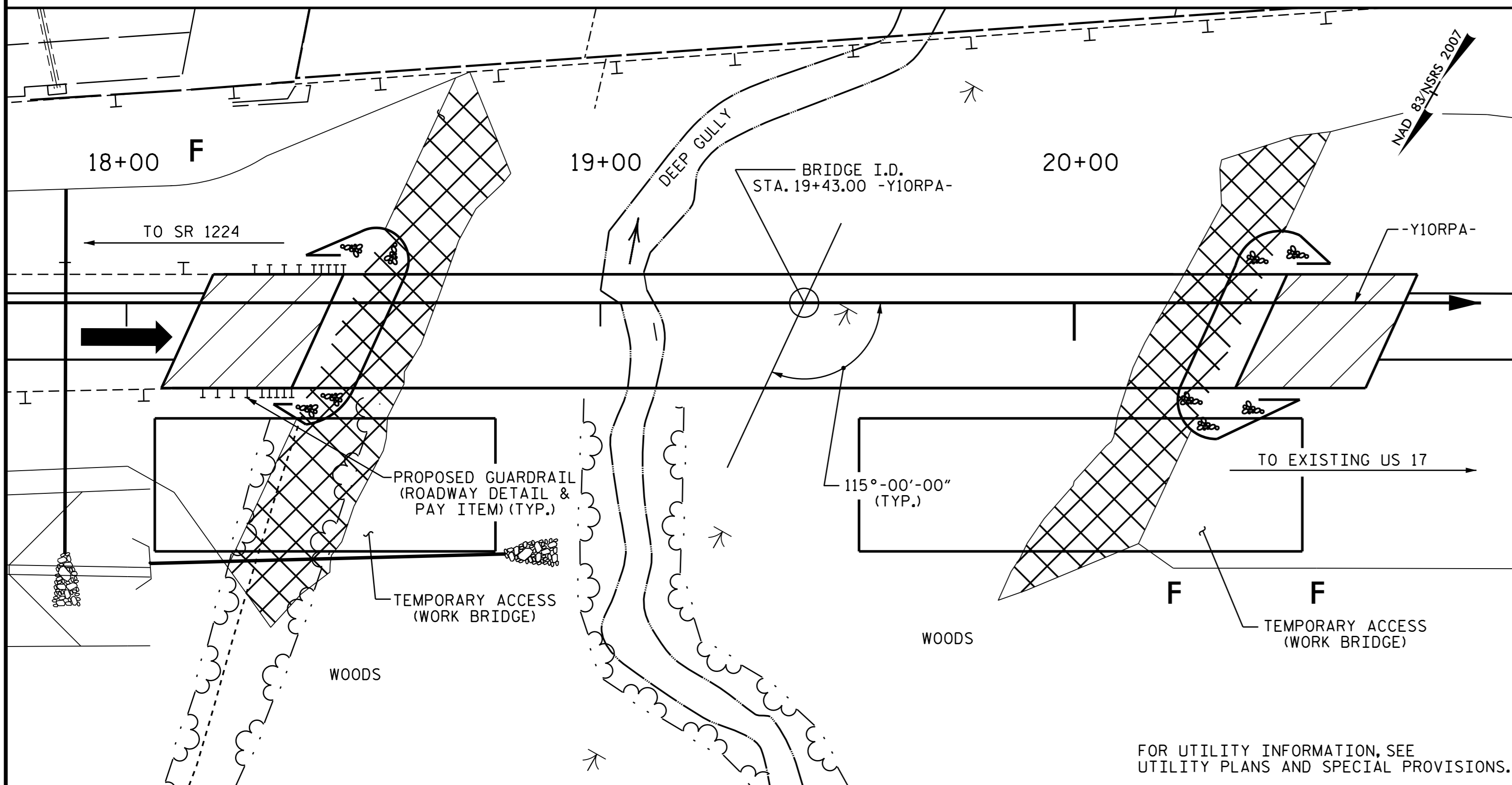
**TOTAL BILL OF MATERIAL**

	CONSTRUCTION, MAINTENANCE, & REMOVAL OF TEMPORARY ACCESS	PDA TESTING	UNCLASSIFIED STRUCTURE EXCAVATION	REINFORCED CONCRETE DECK SLAB	GROOVING BRIDGE FLOORS	CLASS A CONCRETE	BRIDGE APPROACH SLABS	REINFORCING STEEL	MODIFIED 63" PRESTRESSED CONCRETE GIRDERS	12" PRESTRESSED CONCRETE PILES	16" PRESTRESSED CONCRETE PILES	PP 24" X 0.50 GALVANIZED STEEL PILES	PIPE PILE PLATES	PILE REDRIVES	CONCRETE BARRIER RAIL	RIP RAP CLASS II (2'-0") THICK	GEOTEXTILE FOR DRAINAGE	ELASTOMERIC BEARINGS	EXPANSION JOINT SEALS				
	LUMP SUM	EA.	LUMP SUM	SQ. FT.	SQ. FT.	CU. YDS.	LUMP SUM	LBS.	NO.	LIN.FT.	NO.	LIN.FT.	NO.	LIN.FT.	EA.	EA.	LIN. FT.	TONS	SY	LUMP SUM	LUMP SUM		
SUPERSTRUCTURE			LUMP SUM	5,386	5,118		LUMP SUM		6	584.13										LUMP SUM	LUMP SUM		
END BENT NO.1								5,877		2	120			3									
BENT NO.1								2,147					4	2									
END BENT NO.2								5,868		8	280			3									
TOTAL	LUMP SUM	4	LUMP SUM	5,386	5,118	114.0	LUMP SUM	13,892	6	584.13	10	400	6	360	4	260	4	8	436.70	345	376	LUMP SUM	LUMP SUM

--- NOTES ---

- ASSUMED LIVE LOAD = HL-93 OR ALTERNATE LOADING.
- THIS BRIDGE HAS BEEN DESIGNED IN ACCORDANCE WITH THE AASHTO LRFD BRIDGE DESIGN SPECIFICATIONS.
- THIS BRIDGE IS LOCATED IN SEISMIC ZONE 1.
- FOR OTHER DESIGN DATA AND GENERAL NOTES, SEE SHEET SN.
- FOR SUBMITTAL OF WORKING DRAWINGS, SEE SPECIAL PROVISIONS.
- FOR FALSEWORK AND FORMWORK, SEE SPECIAL PROVISIONS.
- FOR CRANE SAFETY, SEE SPECIAL PROVISIONS.
- FOR GROUT FOR STRUCTURES, SEE SPECIAL PROVISIONS.
- PRESTRESSED CONCRETE DECK PANELS MAY BE USED IN LIEU OF METAL STAY-IN-PLACE FORMS IN ACCORDANCE WITH ARTICLE 420-3 OF THE STANDARD SPECIFICATIONS.
- REMOVABLE FORMS MAY BE USED IN LIEU OF METAL STAY-IN-PLACE FORMS IN ACCORDANCE WITH ARTICLE 420-3 OF THE STANDARD SPECIFICATIONS.
- NEEDLE BEAMS WILL NOT BE ALLOWED UNLESS OTHERWISE CALLED FOR ON THE PLANS OR APPROVED BY THE ENGINEER.
- THE MATERIAL SHOWN IN THE CROSS-HATCHED AREA SHALL BE EXCAVATED FOR A DISTANCE OF 47.5 FT LEFT AND 55.75 FT. RIGHT OF CENTERLINE ROADWAY AS DIRECTED BY THE ENGINEER. THIS WORK WILL BE PAID FOR AT THE CONTRACT LUMP SUM PRICE FOR UNCLASSIFIED STRUCTURE EXCAVATION. SEE SECTION 412 OF THE STANDARD SPECIFICATIONS.
- THIS STRUCTURE HAS BEEN DESIGNED IN ACCORDANCE WITH "HEC 18-EVALUATING SCOUR AT BRIDGES."
- FOR INTERIOR BENT 1, ONLY PARTIAL GALVANIZING OF THE PILES IS REQUIRED. SEE INTERIOR BENT SHEET(S) FOR REQUIRED GALVANIZED LENGTHS. PAYMENT FOR PARTIALLY GALVANIZED PILES WILL BE MADE UNDER THE CONTRACT UNIT PRICE FOR GALVANIZED STEEL PILES.
- FOR EROSION CONTROL MEASURES, SEE EROSION CONTROL PLANS.
- FOR PLACING LOAD ON STRUCTURE MEMBERS, SEE SPECIAL PROVISIONS.
- FOR CONSTRUCTION, MAINTENANCE, AND REMOVAL OF TEMPORARY ACCESS AT STATION 19+43.00 -Y10RPA-, SEE SPECIAL PROVISIONS.

B.M. #32: RAILROAD SPIKE IN 7" PINE, STA. 608+78.00 -L-, 849' LT., ELEV. 36.79', NAVD 88.



LOCATION SKETCH

**HYDRAULIC DATA**

DESIGN DISCHARGE	= 390 C.F.S.
FREQUENCY OF DESIGN FLOOD	= 50 YR.
DESIGN HIGH WATER ELEVATION	= 21.4'
DRAINAGE AREA	= 1.5 SQ. MI.
BASE DISCHARGE (Q100)	= 480 C.F.S.
BASE HIGH WATER ELEVATION	= 21.83'

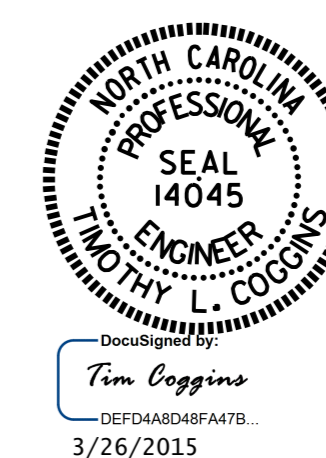
**OVERTOPPING FLOOD DATA**

OVERTOPPING DISCHARGE	= N/A
FREQUENCY OF OVERTOPPING FLOOD	= 500 YR. +
OVERTOPPING FLOOD ELEVATION	= 33.0' *

\* OVERTOPPING ELEV. IS TOP OF HILL @ STA. 17+00 RT. -Y10RPA-

PROJECT NO. R-2514D  
JONES & CRAVEN COUNTY  
 STATION: 19+43.00-Y10RPA-

SHEET 3 OF 3



STATE OF NORTH CAROLINA  
 DEPARTMENT OF TRANSPORTATION  
 RALEIGH

**GENERAL DRAWING**  
 BRIDGE OVER DEEP GULLY  
 ON RAMP FROM US 17 BYPASS  
 TO EXISTING US 17 BETWEEN  
 SR 1330 AND SR 1224

REVISIONS						SHEET NO.
NO.	BY:	DATE:	NO.	BY:	DATE:	SHEET NO.
1			3			17-003
2			4			TOTAL SHEETS 32

DRAWN BY: N. RUFFIN DATE: 1/5/15  
 CHECKED BY: D.G. ELY DATE: 1/12/15  
 DESIGN ENGINEER OF RECORD: N. RUFFIN DATE: 1/28/15