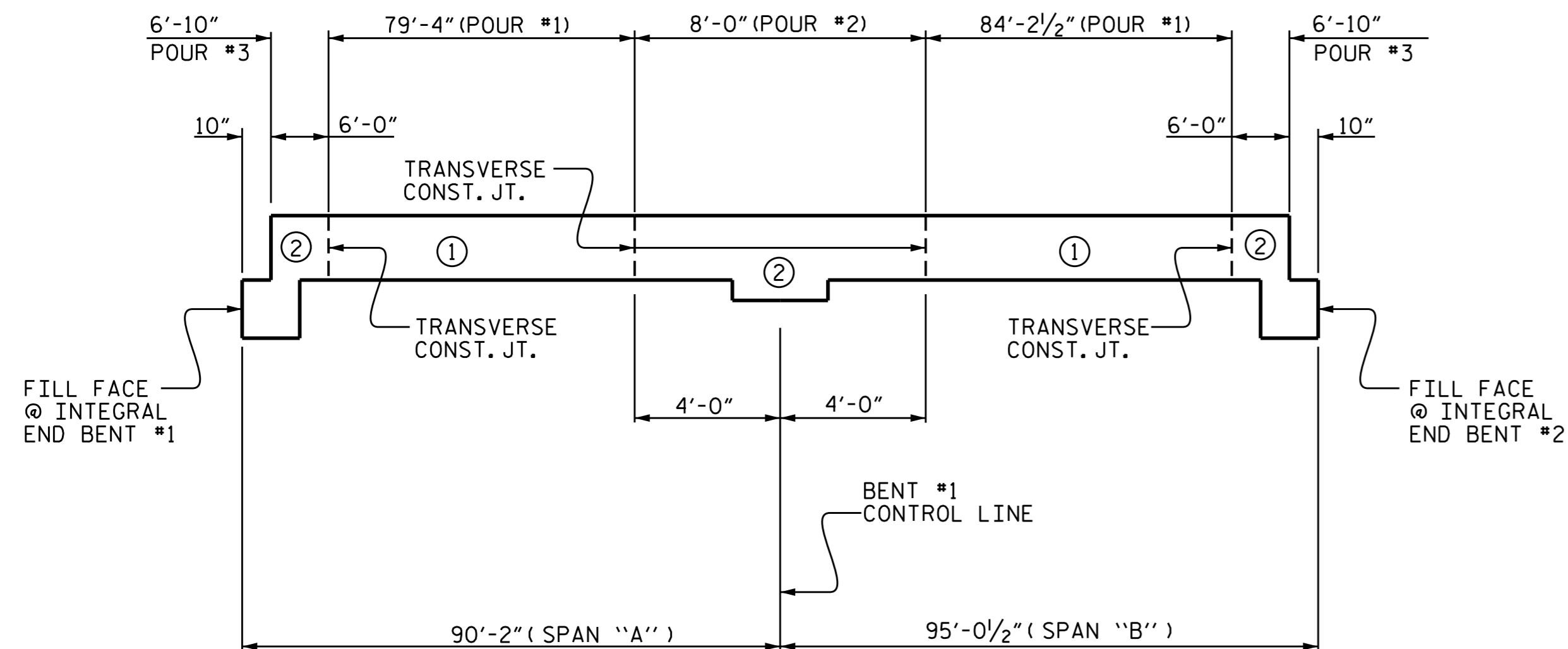


POURING SEQUENCE

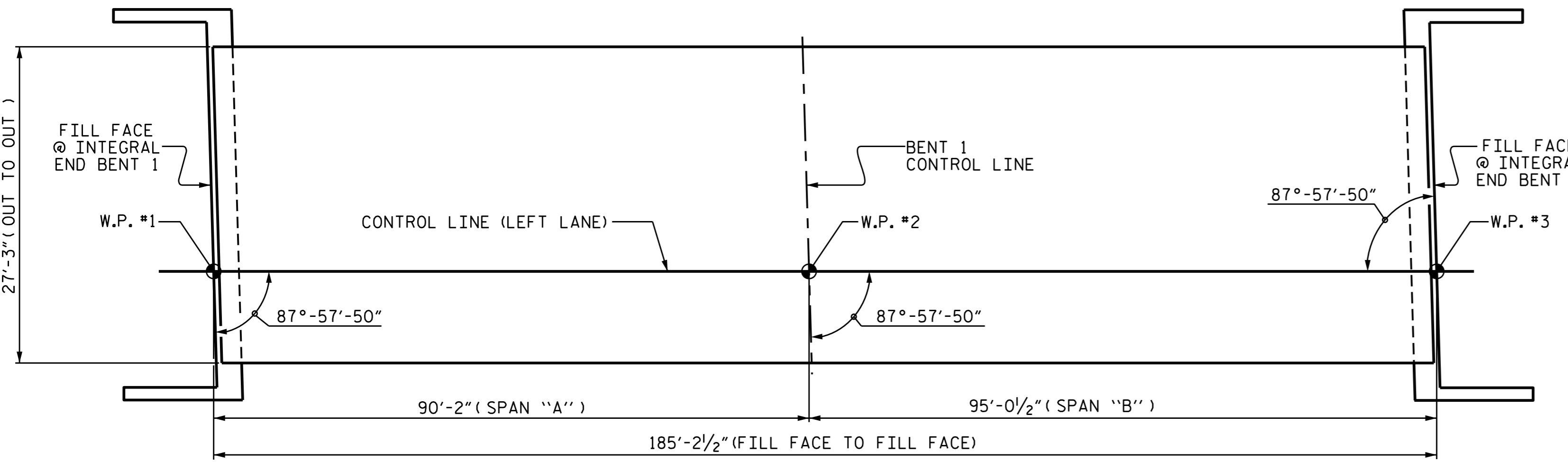
POUR (3) INCLUDES 6'-10" SECTION OF TH BRIDGE DECK AND UPPER PART OF INTEGRAL END BENTS AND WINGS.



OPTIONAL POURING SEQUENCE

POUR (2) CAN NOT BE POURED UNTIL BOTH ADJACENT (1) POURS REACH A MINIMUM STRENGTH OF 3000 PSI.

AT END BENTS POUR (2) INCLUDES 6'-10" SECTION OF THE BRIDGE DECK AND UPPER PART OF INTEGRAL END BENTS AND WINGS.



LAYOUT FOR COMPUTING AREA REINFORCED CONCRETE DECK SLAB (SQ. FT. = 5,047)

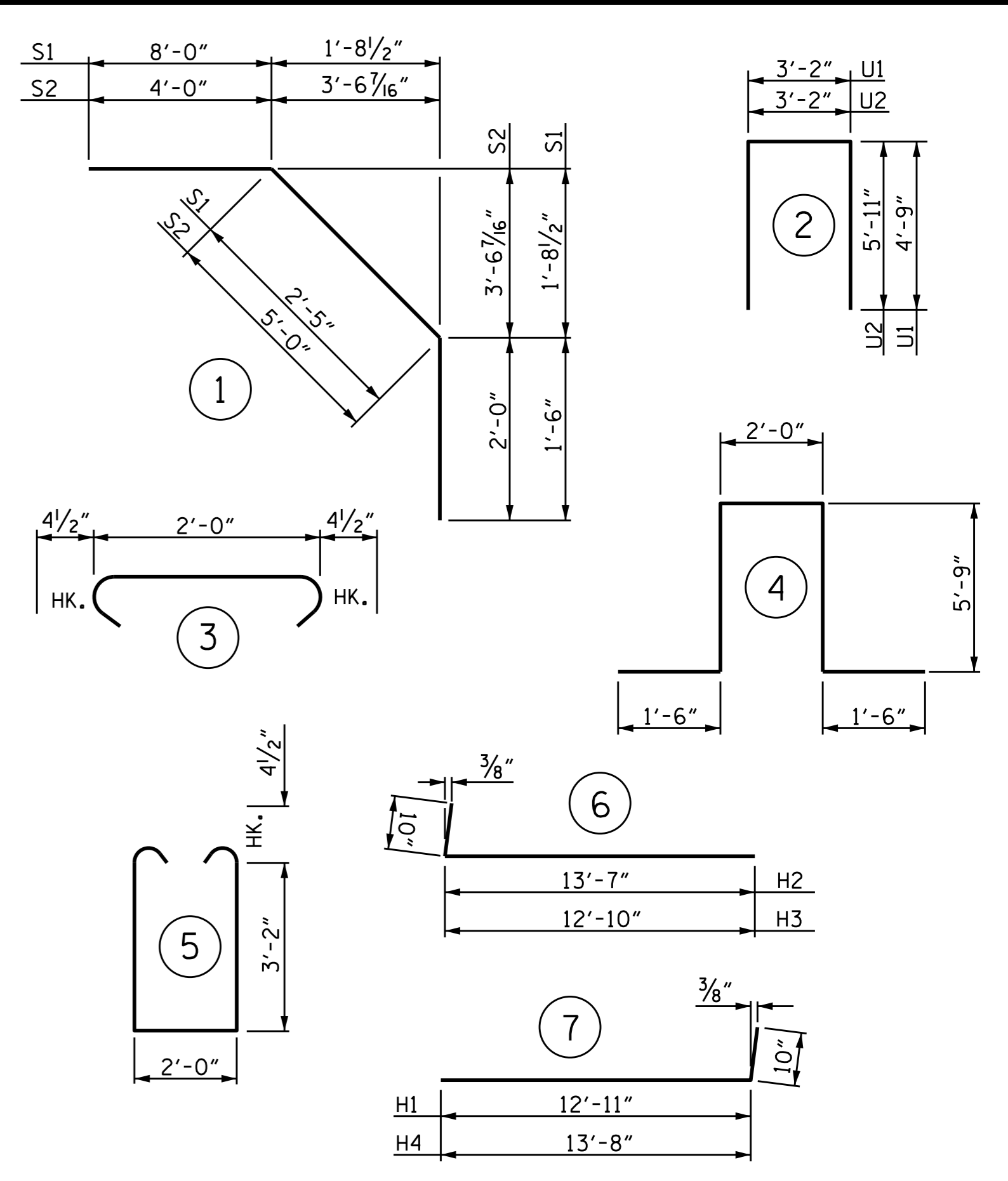
GROOVING BRIDGE FLOORS

APPROACH SLABS	1,036	SO.FT.
BRIDGE DECK	3,847	SO.FT.
TOTAL	4,883	SO.FT.

BILL OF MATERIAL

BAR	NO.	SIZE	TYPE	LENGTH	WEIGHT
*A1	292	#5	STR.	26'-11"	8,198
*A101	2	#5	STR.	12'-3"	26
A2	292	#5	STR.	26'-11"	8,198
A201	2	#5	STR.	12'-3"	26
*B1	60	#4	STR.	21'-1"	845
*B2	60	#4	STR.	22'-1"	885
*B3	72	#6	STR.	19'-1"	2,064
*B4	34	#6	STR.	27'-9"	1,417
*B5	60	#6	STR.	24'-0"	2,163
B6	80	#5	STR.	47'-6"	3,963
H1	24	#5	7	13'-9"	344
H2	24	#5	6	14'-5"	361
H3	24	#5	6	13'-8"	342
H4	24	#5	7	14'-6"	363
K1	24	#4	STR.	17'-5"	279
K2	4	#4	STR.	5'-7"	15
K3	16	#4	STR.	8'-7"	92
K4	4	#4	STR.	7'-0"	19
K5	16	#4	STR.	2'-8"	29
K6	4	#4	STR.	5'-0"	13
K7	16	#4	STR.	6'-6"	69
K8	4	#4	STR.	5'-9"	15
K9	6	#4	STR.	19'-0"	76
K10	4	#4	STR.	5'-7"	15
K11	16	#4	STR.	8'-7"	92
K12	4	#4	STR.	5'-10"	16
*S1	40	#4	1	11'-11"	318
*S2	36	#4	1	11'-0"	265
S3	68	#4	3	2'-9"	125
S4	4	#4	5	9'-1"	24
U1	40	#4	2	12'-8"	338
U2	12	#4	2	15'-0"	120
*U3	12	#4	4	16'-6"	132
V1	18	#4	STR.	5'-3"	63
V2	48	#5	STR.	6'-0"	300
V3	52	#5	STR.	6'-1"	330
REINFORCING STEEL				15,627	LBS.
*EPOXY COATED REINFORCING STEEL				16,313	LBS.

BAR TYPES



ALL BAR DIMENSIONS ARE OUT TO OUT

SUPERSTRUCTURE REINFORCING STEEL LENGTHS ARE BASED ON THE FOLLOWING MINIMUM SPLICE LENGTHS

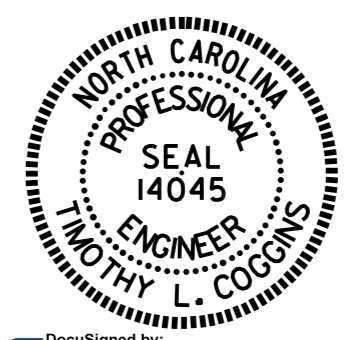
BAR SIZE	SUPERSTRUCTURE EXCEPT APPROACH SLABS, PARAPET, AND BARRIER RAIL		APPROACH SLABS		PARAPET AND BARRIER RAIL
	EPOXY COATED	UNCOATED	EPOXY COATED	UNCOATED	
#4	2'-0"	1'-9"	2'-0"	1'-9"	2'-9"
#5	2'-6"	2'-2"	2'-6"	2'-2"	3'-5"
#6	3'-0"	2'-7"	3'-10"	2'-7"	4'-4"
#7	5'-3"	3'-6"			
#8	6'-10"	4'-7"			

SUPERSTRUCTURE BILL OF MATERIAL

	CLASS AA CONCRETE (CU. YDS.)	REINFORCING STEEL (LBS.)	EPOXY COATED REINFORCING STEEL (LBS.)
POUR #1	69.1		
POUR #2	93.0	15,627	16,313
POUR #3	67.0		
TOTALS**	229.1	15,627	16,313

** QUANTITIES FOR BARRIER RAIL ARE NOT INCLUDED.
 POUR #3 QUANTITY INCLUDES UPPER POUR OF WINGS AND INTEGRAL END BENT.

PROJECT NO. R-2514D
 JONES & CRAVEN COUNTY
 STATION: 28+29.35 -Y10-

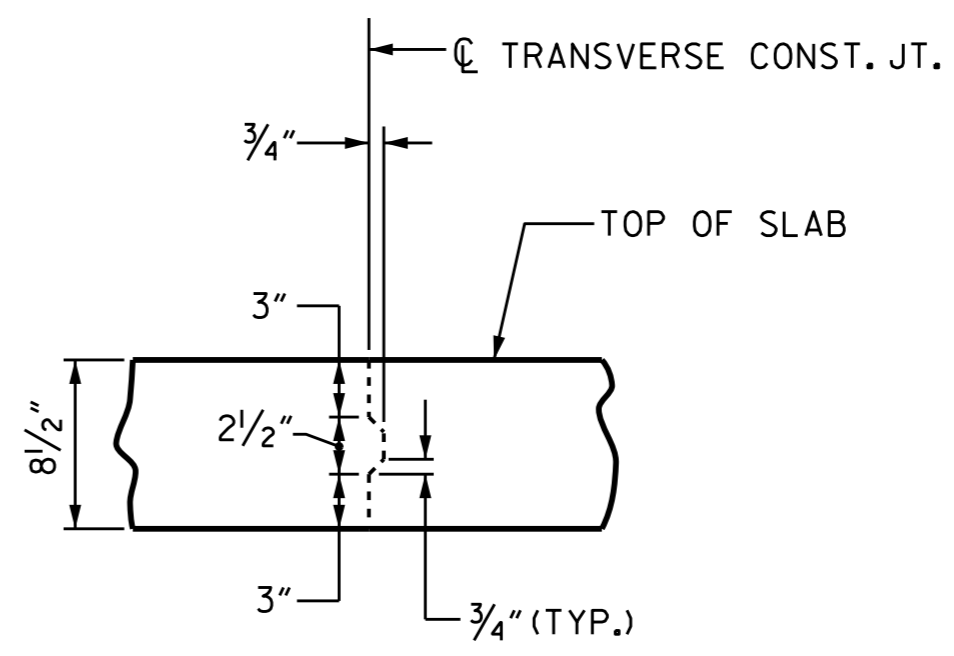


DocuSigned by Tim Coggins 3/23/2015

STATE OF NORTH CAROLINA
 DEPARTMENT OF TRANSPORTATION
 RALEIGH
 STANDARD
 SUPERSTRUCTURE
 BILL OF MATERIAL
 (LEFT LANE)

REVISIONS						SHEET NO. S15-019
NO.	BY:	DATE:	NO.	BY:	DATE:	
1			3			TOTAL SHEETS 30
2			4			

TRANSVERSE CONSTRUCTION JOINT DETAIL



NOTE: REINFORCING STEEL IN SLAB NOT SHOWN. LONGITUDINAL REINFORCING STEEL SHALL BE CONTINUOUS THRU JOINT

ASSEMBLED BY : M.D.PISO	DATE : 08-16-13
CHECKED BY : K.P.SEDAI	DATE : 07-24-14
DESIGN ENGINEER OF RECORD: Reza Koucheh	DATE : 02/2015
DRAWN BY : JMB 5/87	REV. 8/16/99 RWW/LES
CHECKED BY : SJD 9/87	REV. 5/1/06 TLA/GM
	REV. 10/1/11 MAA/GM