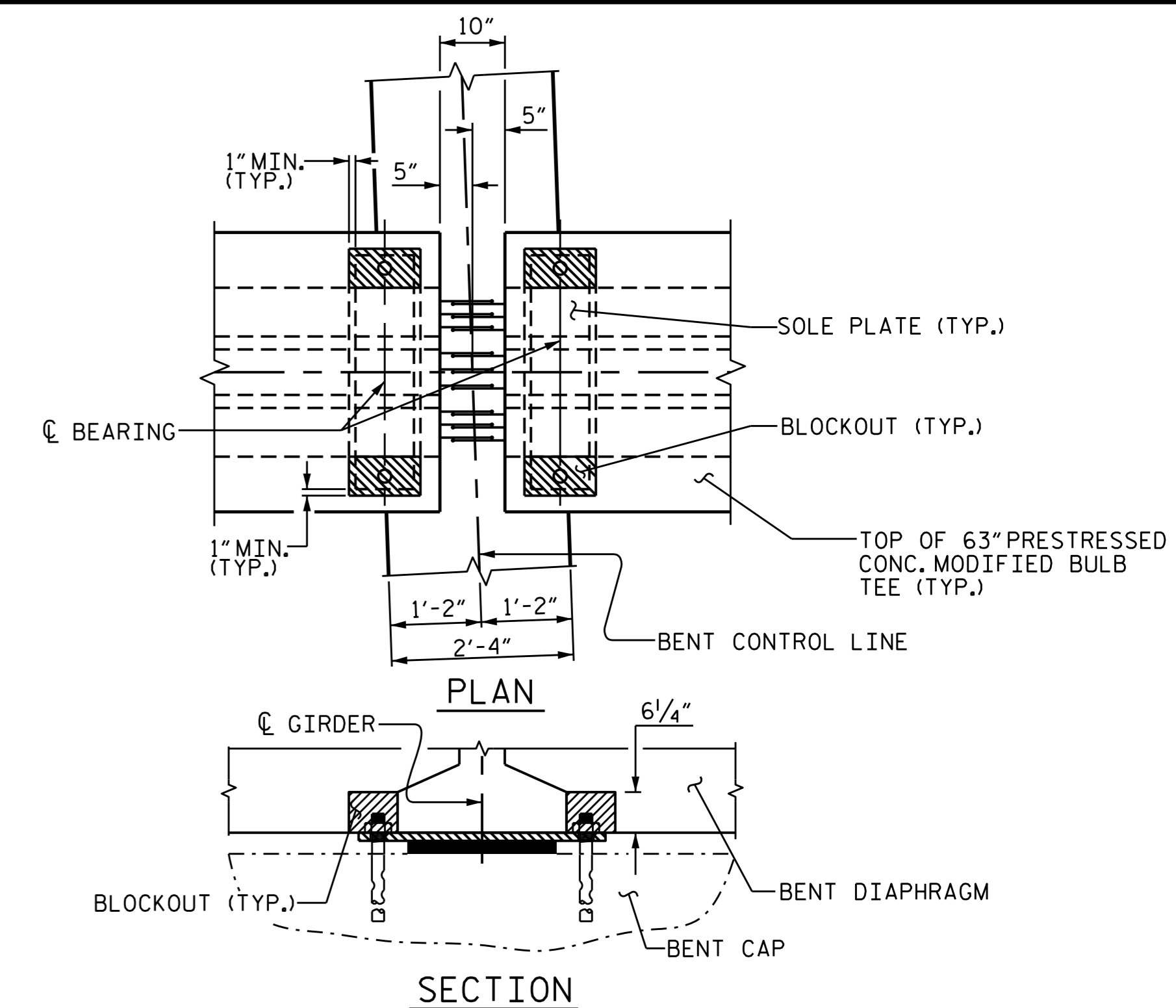
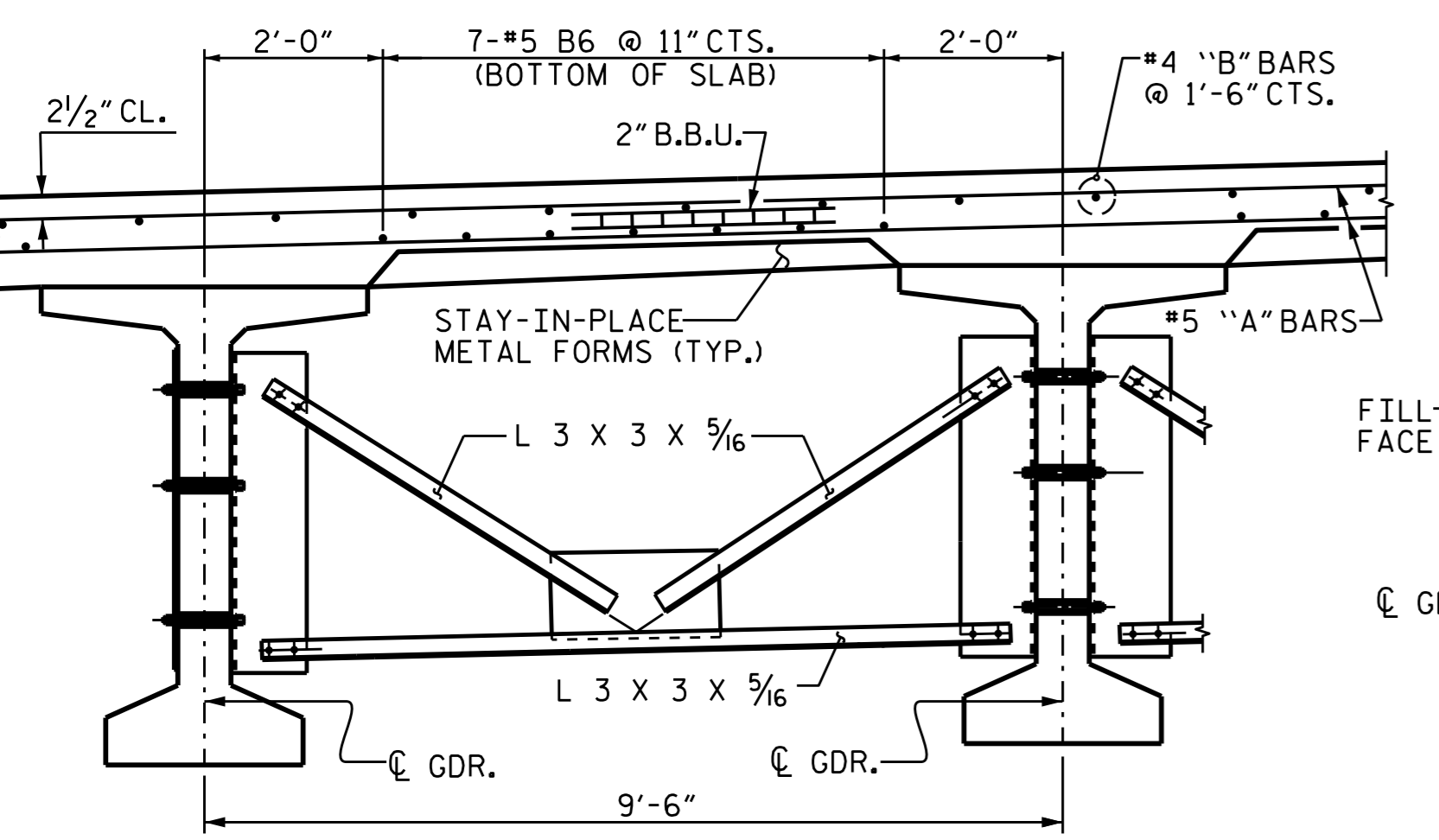


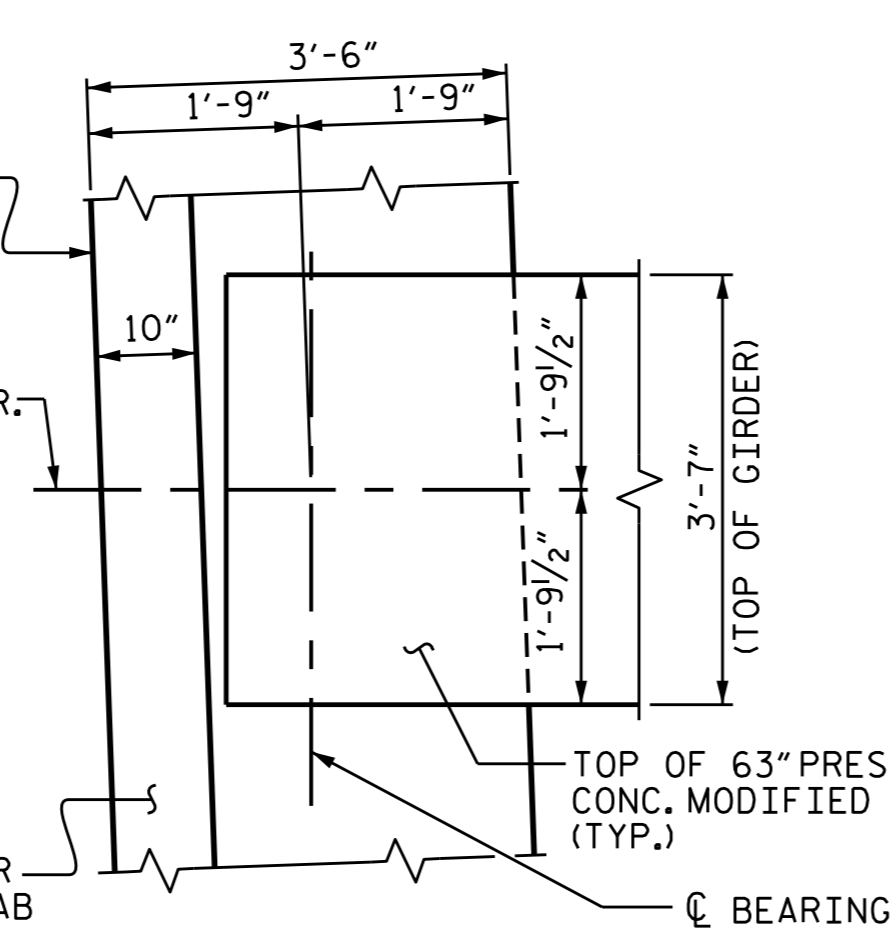
TYPICAL SECTION @ CONTINUOUS BENT DIAPHRAGM



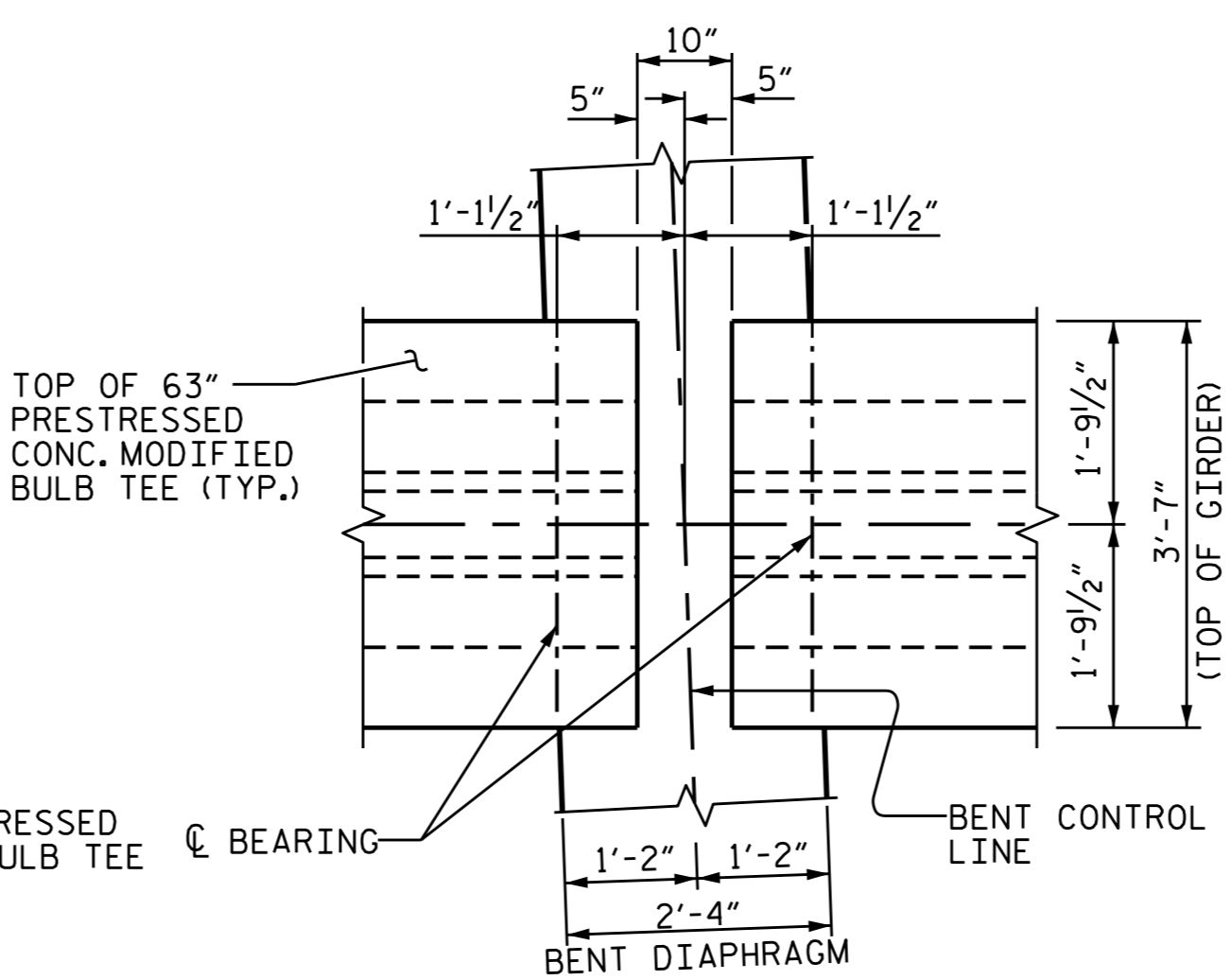
BENT DIAPHRAGM BLOCK-OUT DETAIL



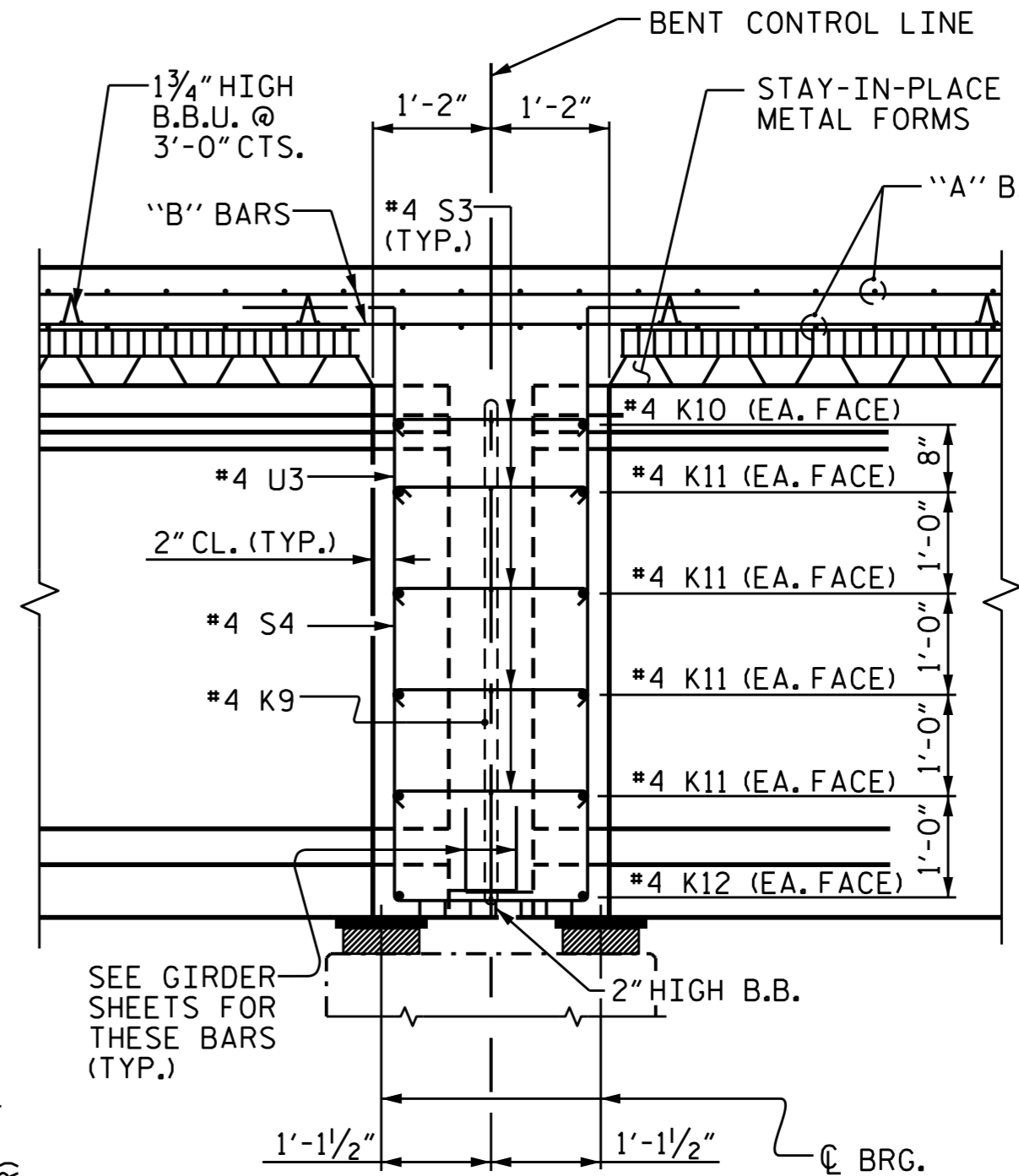
PARTIAL TYPICAL SECTION @ INTERMEDIATE DIAPHRAGMS



END BENT DIAPHRAGM



BENT DIAPHRAGM



SECTION @ INTERIOR BENT DIAPHRAGM

PROJECT NO. R-2514D
 JONES & CRAVEN COUNTY
 STATION: 28+29.35 -Y10-

SHEET 2 OF 2

STATE OF NORTH CAROLINA
 DEPARTMENT OF TRANSPORTATION
 RALEIGH
 SUPERSTRUCTURE
 TYPICAL SECTION
 DETAILS
 (LEFT LANE)



REVISIONS						SHEET NO. S15-006
NO.	BY:	DATE:	NO.	BY:	DATE:	
1			3			TOTAL SHEETS 30
2			4			

DRAWN BY: M.D.PISO DATE: 07-02-13
 CHECKED BY: K.P.SEDA DATE: 09-05-14
 DESIGN ENGINEER OF RECORD: M. Sedai DATE: 02/2015