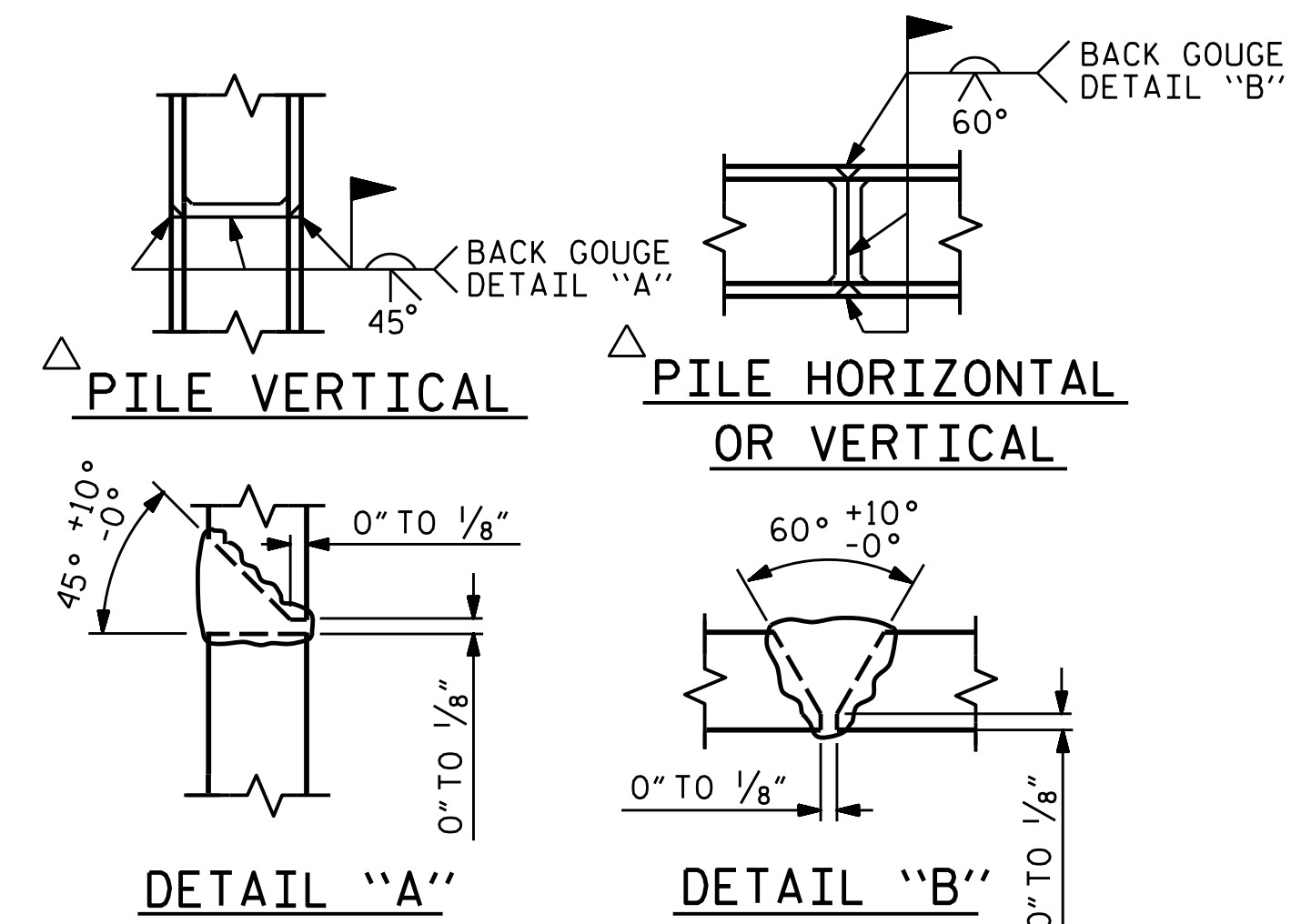


BAGGED STONE AND PIPE SHALL BE PLACED IMMEDIATELY AFTER COMPLETION OF END BENT EXCAVATION. PIPE MAY BE EITHER CONCRETE, CORRUGATED STEEL, CORRUGATED ALUMINUM ALLOY, OR CORRUGATED PLASTIC. PERFORATED PIPE WILL NOT BE ALLOWED.

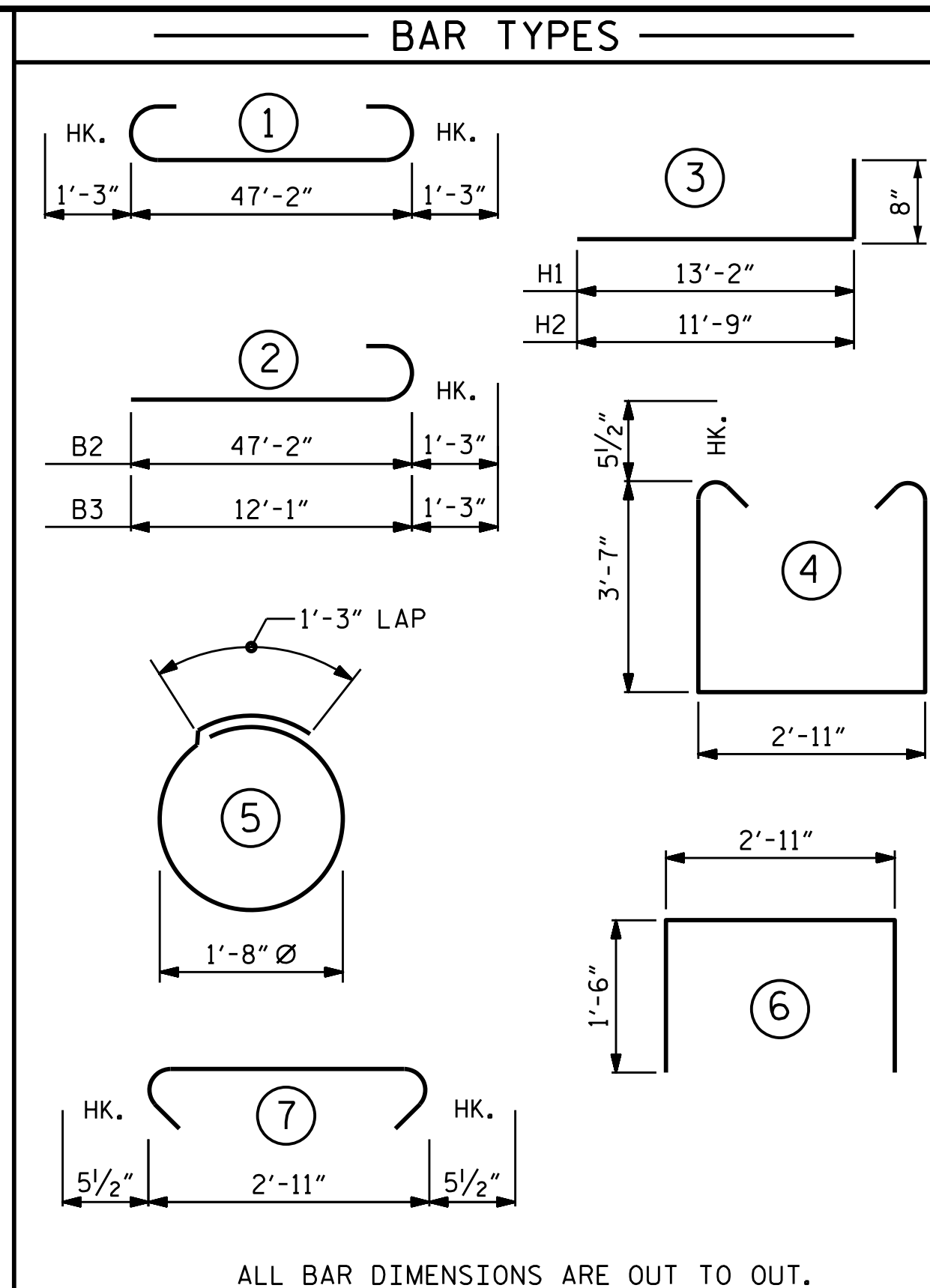
BAGGED STONE SHALL REMAIN IN PLACE UNTIL THE ENGINEER DIRECTS THAT IT BE REMOVED. THE CONTRACTOR SHALL REMOVE AND DISPOSE OF SILT ACCUMULATIONS AT BAGGED STONE WHEN SO DIRECTED BY THE ENGINEER. BAGS SHALL BE REMOVED AND REPLACED WHENEVER THE ENGINEER DETERMINES THAT THEY HAVE DETERIORATED AND LOST THEIR EFFECTIVENESS.

NO SEPARATE PAYMENT WILL BE MADE FOR THIS WORK AND THE ENTIRE COST OF THIS WORK SHALL BE INCLUDED IN THE UNIT CONTRACT PRICE BID FOR THE SEVERAL PAY ITEMS.

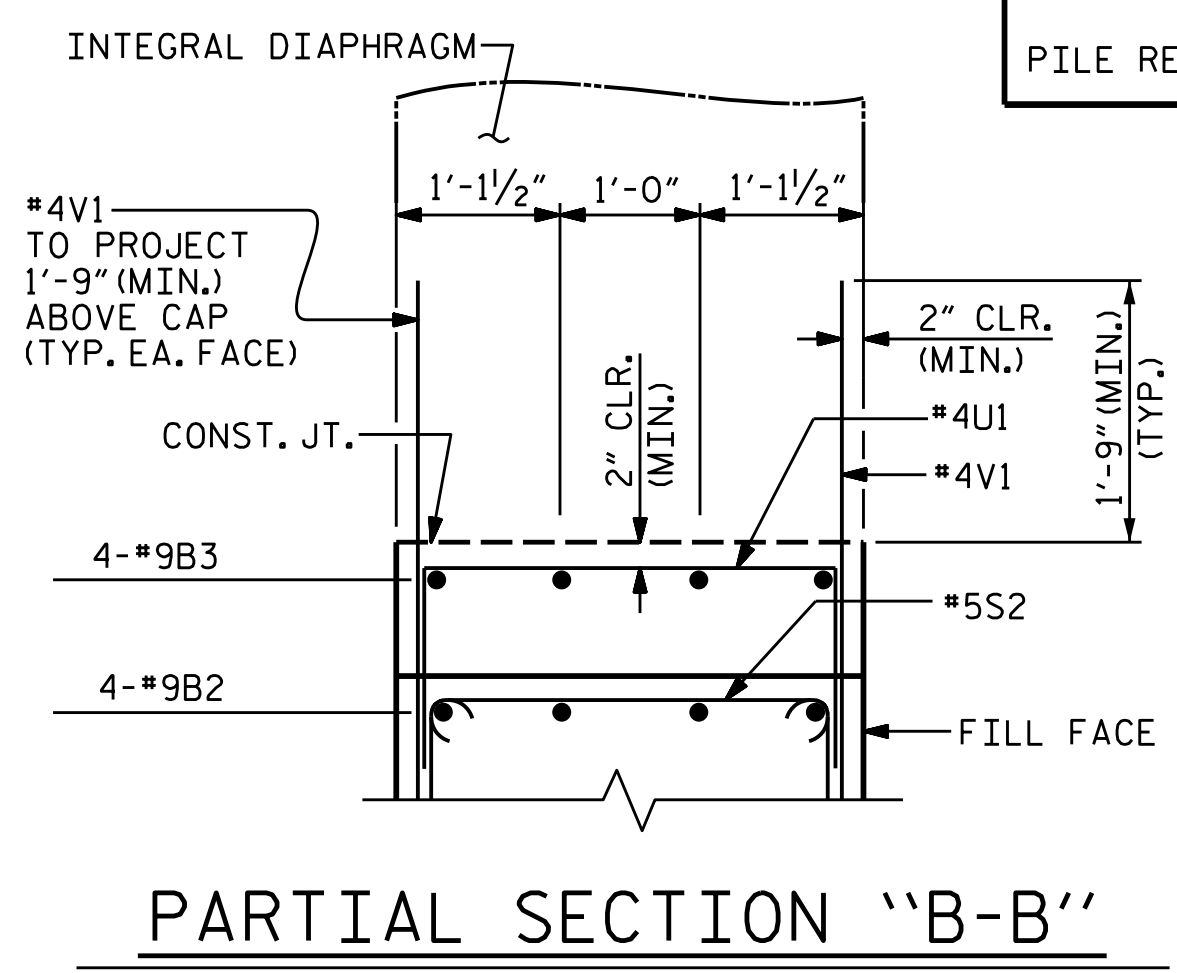
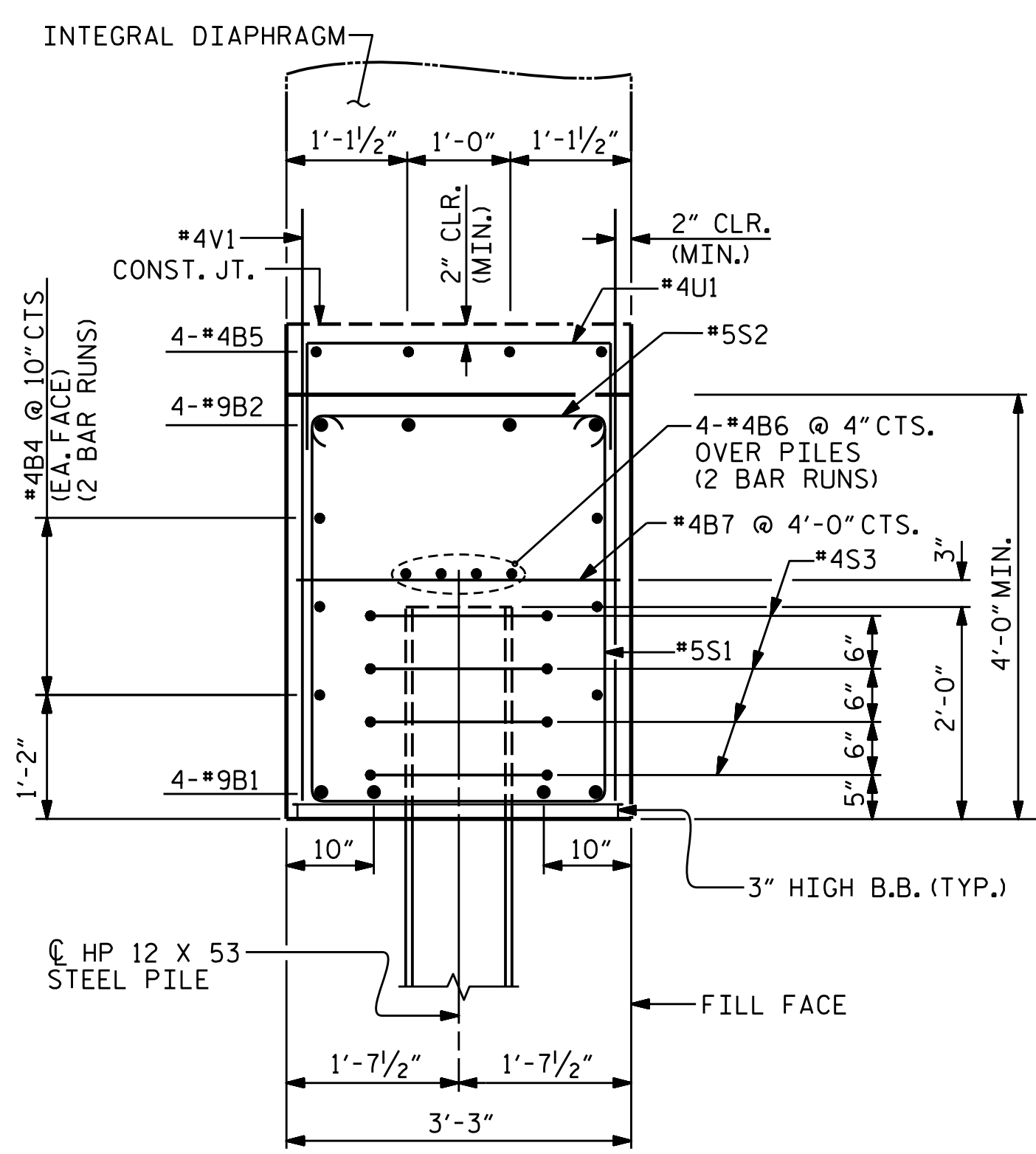
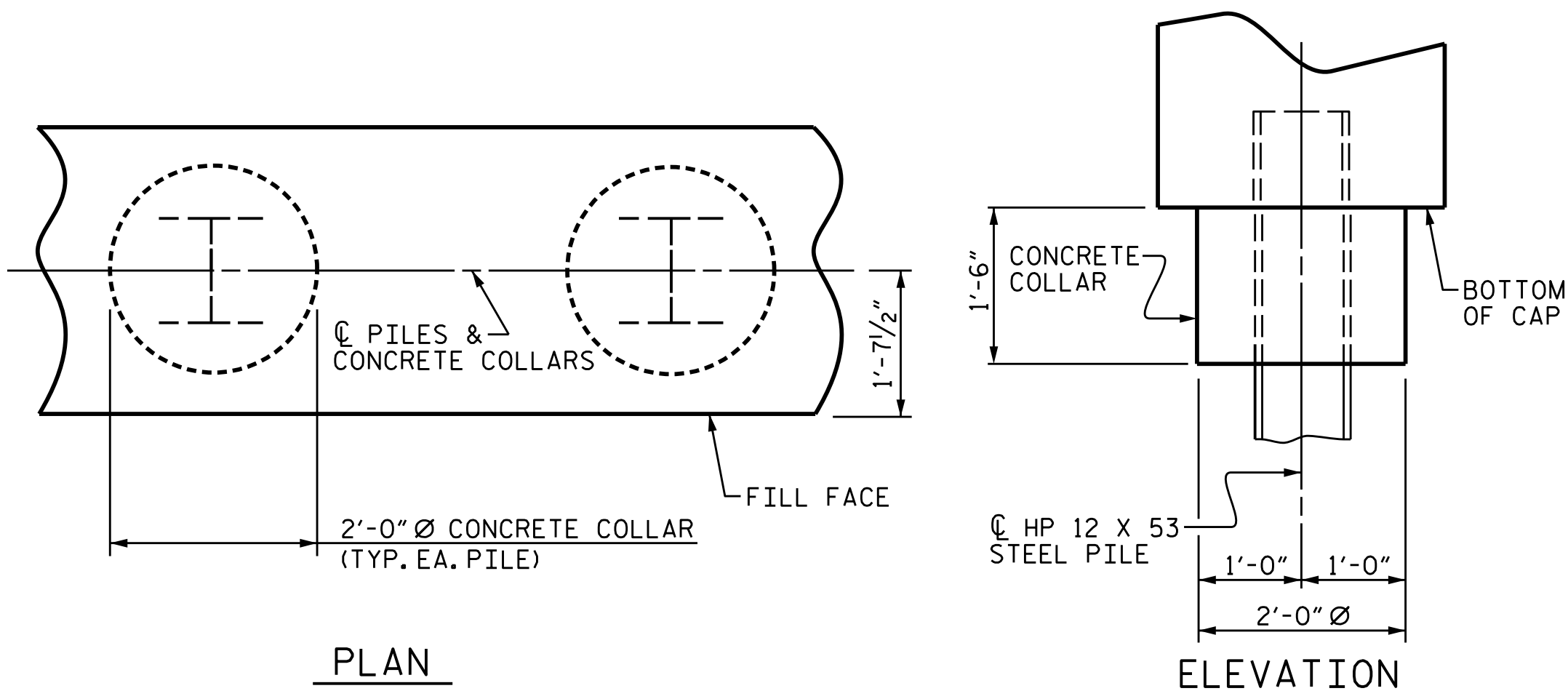
TEMPORARY DRAINAGE AT END BENT



PILE SPLICE DETAILS



BILL OF MATERIAL					
INTEGRAL END BENT NO. 1					
BAR NO.	NO.	SIZE	TYPE	LENGTH	WEIGHT
B1	4	#9	1	49'-8"	675
B2	4	#9	2	48'-5"	658
B3	4	#9	2	13'-4"	181
B4	12	#4	STR	24'-10"	199
B5	8	#4	STR	13'-9"	73
B6	8	#4	STR	24'-10"	133
B7	12	#4	STR	2'-11"	23
H1	14	#5	3	13'-10"	202
H2	10	#5	3	12'-5"	130
S1	44	#5	4	11'-0"	505
S2	44	#5	7	3'-10"	176
S3	32	#4	5	6'-6"	139
V1	78	#4	STR	6'-5"	334
V2	25	#5	STR	10'-1"	263
V3	23	#4	STR	9'-2"	141
U1	32	#4	6	5'-11"	126
REINFORCING STEEL					3958
CLASS A CONCRETE BREAKDOWN					
POUR #1 CAP, LOWER PART OF WINGS & COLLARS				29.8 C.Y.	
TOTAL CLASS A CONCRETE				29.8 C.Y.	
HP 12 X 53 STEEL PILES NO. = 8				600 L.F.	
PILE REDRIVES				4 EA.	



PROJECT NO. R-2514D

JONES COUNTY

STATION: 561+15.20 -L-
=17+04.80 -Y7-

SHEET 2 OF 5

DocuSigned by:
Mark Gustafson
9E00EDB87408456...
3/23/2015

PLAN PREPARED BY:

ALPHA & OMEGA GROUP
CIVIL & STRUCTURAL ENGINEERS
4601 Lake Boone Trail, Ste. 3C Raleigh, NC 27607
Phone 919 981 0310 Fax 919 981 0451
Firm License No. C-1684 www.aogroup.com
A&O PROJECT NO. 2013.044

3/20/2015
SEAL
28601
MARK E. GUSTAFSON
REGISTERED PROFESSIONAL ENGINEER
STATE OF NORTH CAROLINA

STATE OF NORTH CAROLINA DEPARTMENT OF TRANSPORTATION RALEIGH					
SUBSTRUCTURE END BENT NO. 1 DETAILS RIGHT LANE					
REVISIONS					
NO.	BY:	DATE:	NO.	BY:	DATE:
1			3		
2			4		

SHEET NO. S14-16				
TOTAL SHEETS 21				

DRAWN BY: JD GOODIN DATE: 5/16/14
CHECKED BY: MEG / JWT DATE: 6/23/14
QC / QA BY: TG ZEBLO DATE: 7/7/14