

### NOTES

THE #4V1 BARS IN CAP MAY BE SHIFTED SLIGHTLY TO AVOID STIRRUPS IN CAP.

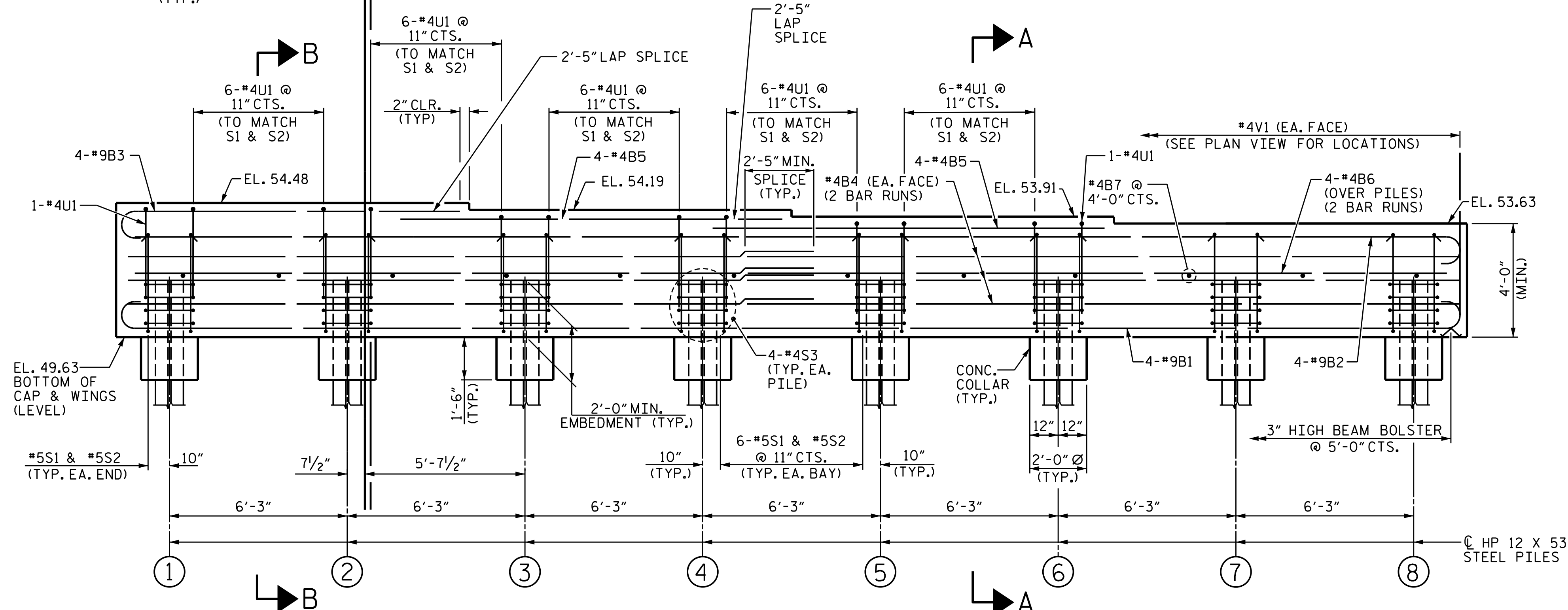
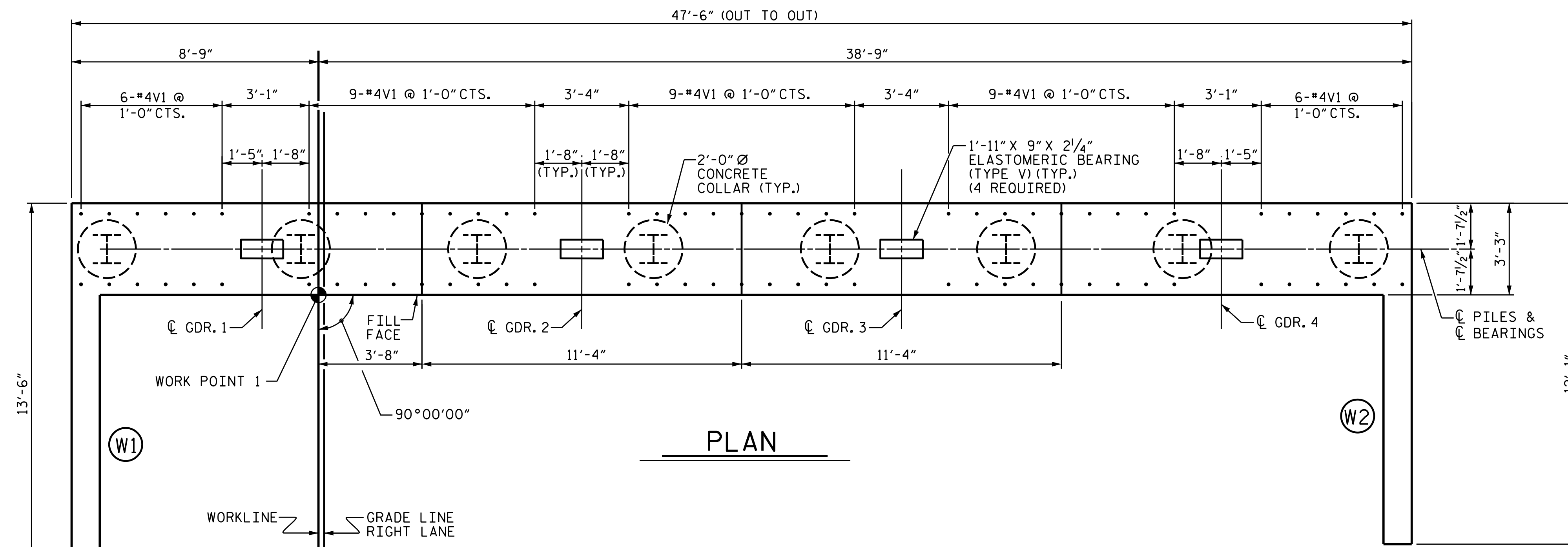
FOR PILE SPLICE DETAILS, SEE SHEET 2 OF 5.

FOR WING DETAILS, SEE SHEET 5 OF 5.

THE TOP SURFACE OF THE CAP AND WINGS, EXCLUDING THE BEARING AREA, SHALL BE RAKED TO A DEPTH OF 1/4".

SEE SUPERSTRUCTURE SHEETS FOR UPPER PART OF THE INTEGRAL END BENT DETAILS.

INSTALL THE 4" DIAMETER DRAIN PIPE THROUGH THE WING WALL AS REQUIRED FOR REINFORCED BRIDGE APPROACH FILLS, SEE THE ROADWAY PLANS. REINFORCING STEEL IN THE WING WALL MAY BE SHIFTED AS NECESSARY TO CLEAR THE DRAIN PIPE.



### ELEVATION

FOR SECTION "A-A" AND PARTIAL SECTION "B-B", SEE SHEET 2 OF 5.

PROJECT NO. R-2514D

JONES COUNTY

STATION: 561+15.20 -L-  
=17+04.80 -Y7-

SHEET 1 OF 5

STATE OF NORTH CAROLINA  
DEPARTMENT OF TRANSPORTATION  
RALEIGH

SUBSTRUCTURE  
END BENT NO. 1  
RIGHT LANE

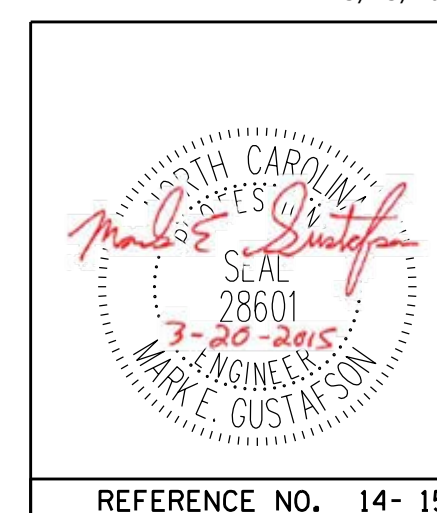
#### REVISIONS

NO.	BY:	DATE:	NO.	BY:	DATE:
1			3		
2			4		

SHEET NO.  
**S14-15**  
TOTAL SHEETS  
**21**

DocuSigned by:  
*Mark Gustafson*  
9E00EDB87408456...

3/23/2015



PLAN PREPARED BY:



**ALPHA & OMEGA GROUP**  
CIVIL & STRUCTURAL ENGINEERS  
4601 Lake Boone Trail, Ste. 3C Raleigh, NC 27607  
Phone 919 981 0310 Fax 919 981 0451  
Firm License No. C-1684 www.aogroup.com  
A&O PROJECT NO. 2013.044

REFERENCE NO. 14- 15

STRUCTURE NO. 14

DRAWN BY: JD GOODIN DATE: 5/16/14  
CHECKED BY: MEG / JWT DATE: 6/23/14  
QC / QA BY: TG ZEBLO DATE: 7/7/14