

REINFORCING BAR SCHEDULE					
BAR	NO.	SIZE	TYPE	LENGTH	WEIGHT
* A1	186	#5	STR.	41'-2"	7986
A2	186	#5	STR.	41'-2"	7986
* B1	56	#4	STR.	30'-0"	1122
B2	106	#5	STR.	43'-5"	4800
* B3	110	#7	STR.	18'-7"	4178
* S1	66	#4	1	11'-8"	514
* S2	62	#4	1	10'-8"	442
K1	24	#4	STR.	24'-6"	393
K2	6	#4	STR.	9'-4"	37
K3	18	#4	STR.	10'-4"	124
K4	6	#4	STR.	9'-4"	37
K5	6	#4	STR.	8'-10"	35
K6	16	#4	STR.	2'-8"	29
K7	4	#4	STR.	5'-7"	15
K8	12	#4	STR.	6'-1"	49
K9	4	#4	STR.	5'-7"	15
K10	4	#4	STR.	5'-4"	14
U1	66	#4	2	11'-3"	496
U2	12	#4	2	13'-5"	108
H1	32	#5	3	13'-10"	462
H2	32	#5	3	12'-5"	414

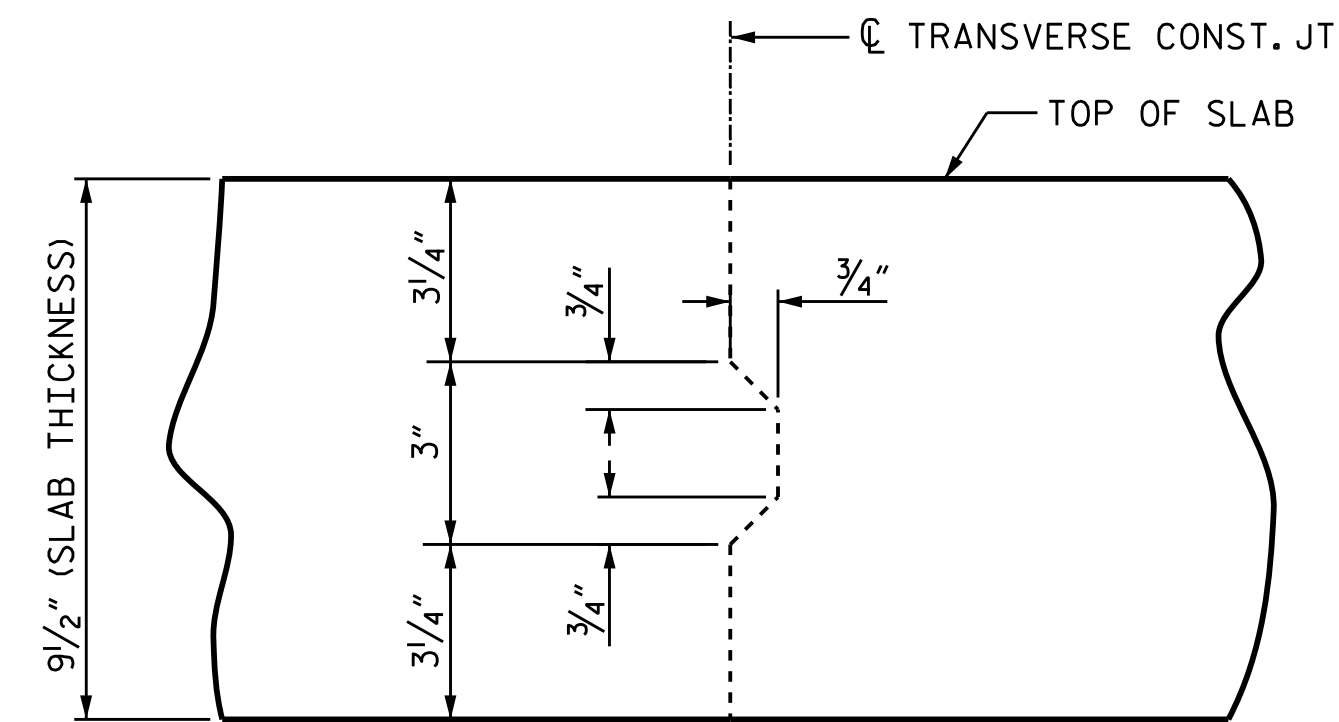
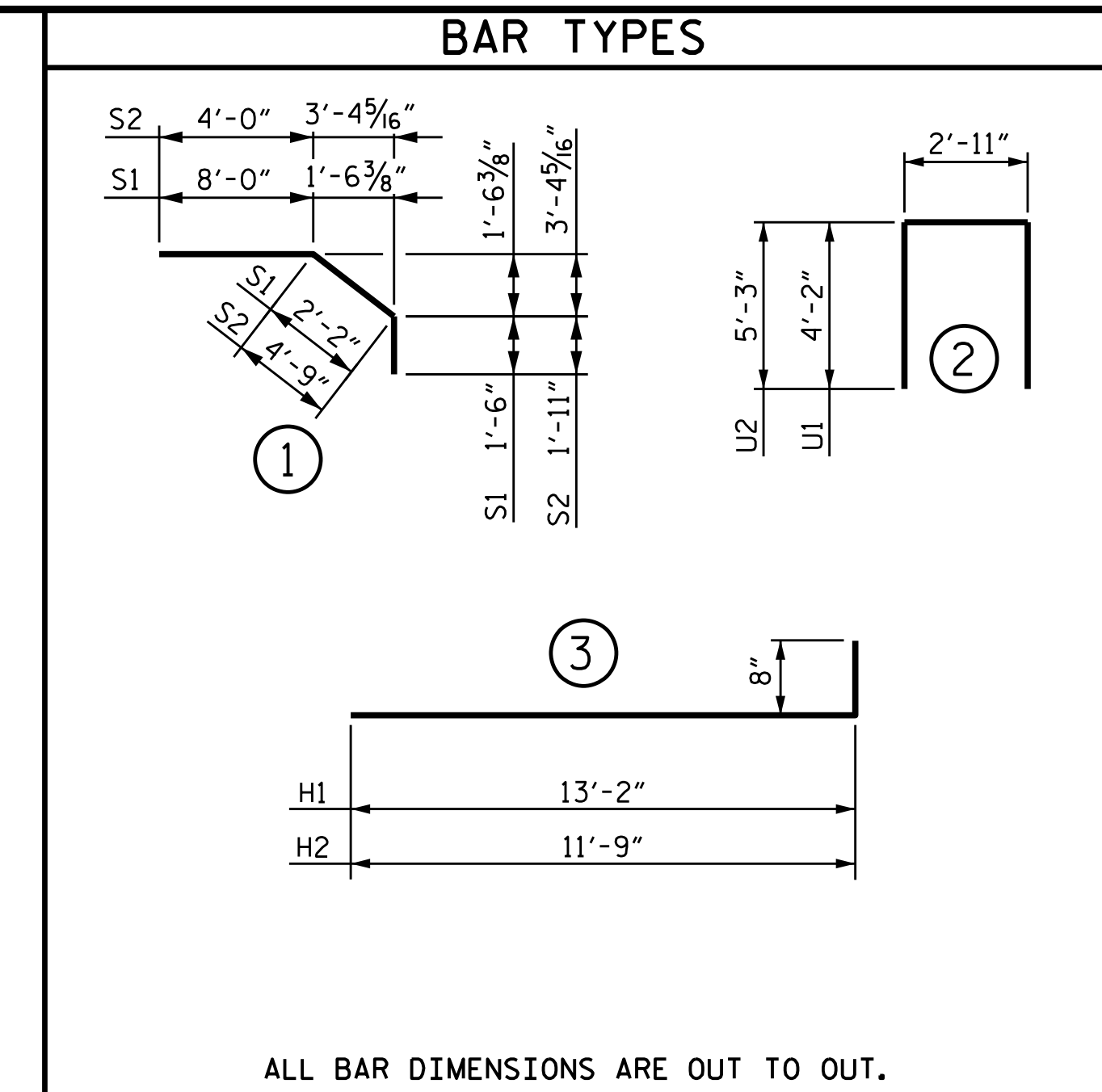
\* EPOXY COATED REINFORCING STEEL.

SUPERSTRUCTURE BILL OF MATERIAL			
	CLASS AA CONCRETE (CU. YDS.)	REINFORCING STEEL (LBS.)	EPOXY COATED REINFORCING STEEL (LBS.)
POUR 1	88.8		
POUR 2	73.7		
TOTALS**	162.5	15014	14242

\*\* QUANTITIES FOR BARRIER RAIL ARE NOT INCLUDED.

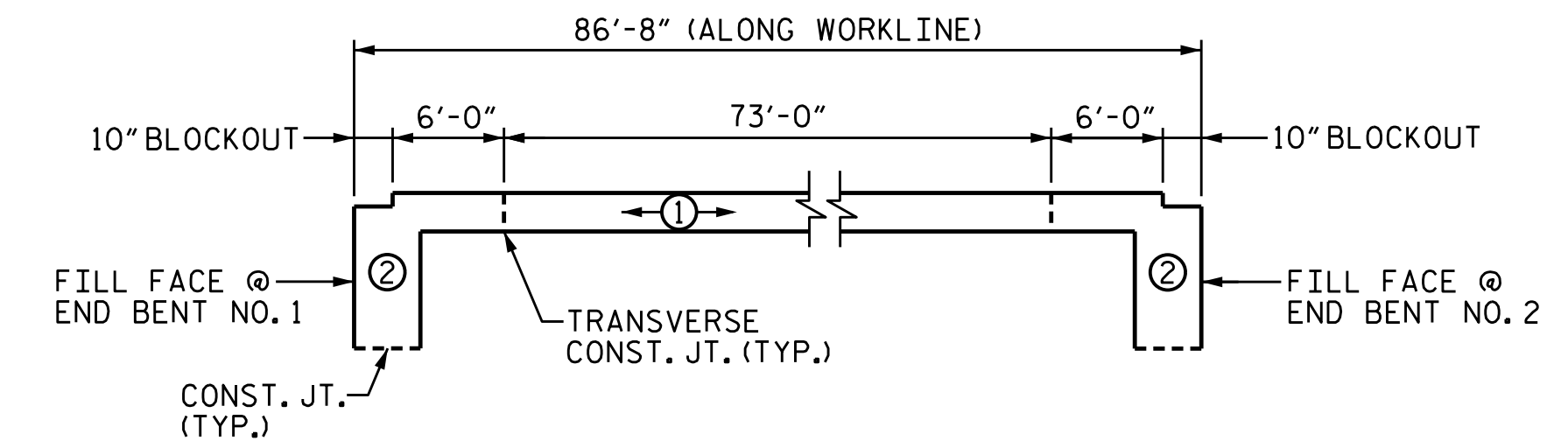
GROOVING BRIDGE FLOORS		
APPROACH SLABS	1739	SO.FT.
BRIDGE DECK	3043	SO.FT.
TOTAL	4782	SO.FT.

SUPERSTRUCTURE REINFORCING STEEL LENGTHS ARE BASED ON THE FOLLOWING MINIMUM SPLICE LENGTHS					
BAR SIZE	SUPERSTRUCTURE EXCEPT APPROACH SLABS, PARAPET, AND BARRIER RAIL		APPROACH SLABS		PARAPET AND BARRIER RAIL
	EPOXY COATED	UNCOATED	EPOXY COATED	UNCOATED	
#4	2'-0"	1'-9"	2'-0"	1'-9"	2'-9"
#5	2'-6"	2'-2"	2'-6"	2'-2"	3'-5"
#6	3'-0"	2'-7"	3'-10"	2'-7"	4'-4"
#7	5'-3"	3'-6"			
#8	6'-10"	4'-7"			



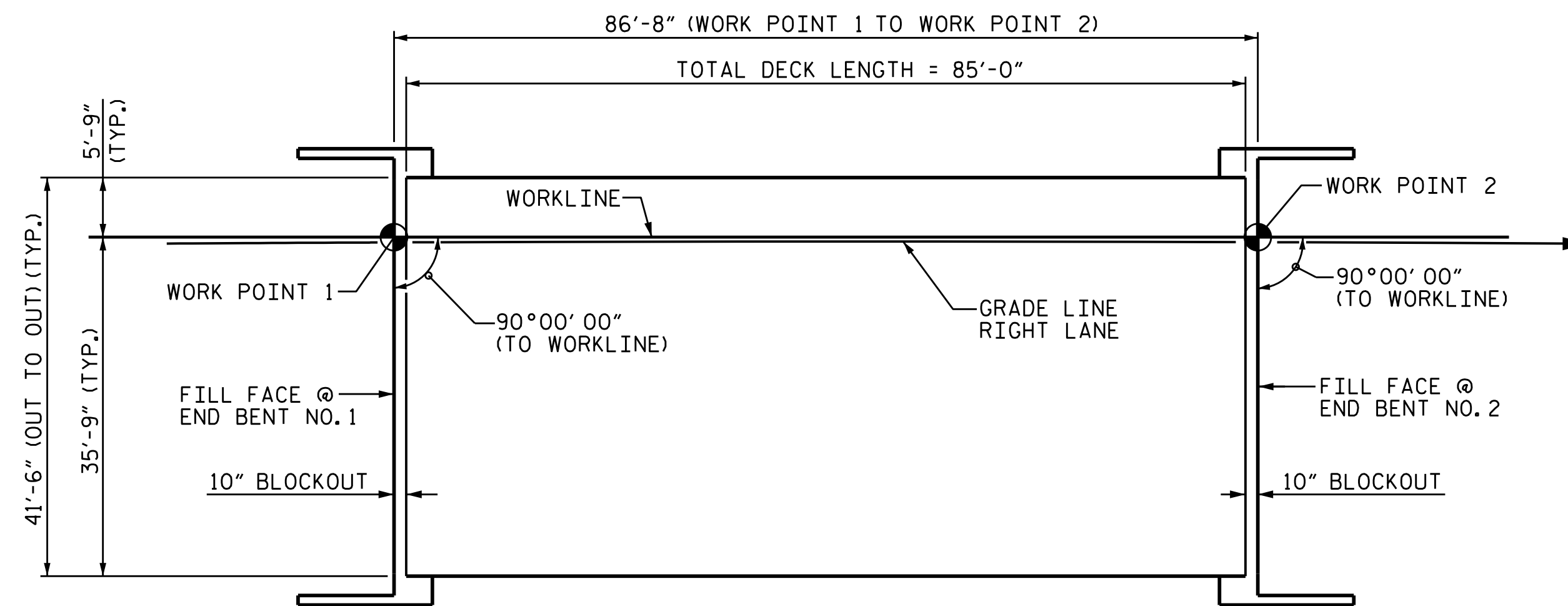
### TRANSVERSE CONSTRUCTION JOINT IN DECK SLAB

REINFORCING STEEL IN SLAB NOT SHOWN. LONGITUDINAL REINFORCING STEEL SHALL BE CONTINUOUS THROUGH JOINT.



### POUR SEQUENCE

① INDICATES POUR NUMBER AND DIRECTION OF POUR.  
(POUR #2 CANNOT BE STARTED UNTIL POUR #1 HAS REACHED A MINIMUM OF 3,000 PSI.)



### PLAN

LAYOUT FOR COMPUTING AREA OF REINFORCED CONCRETE DECK SLAB. (SQ. FT. = 3597)

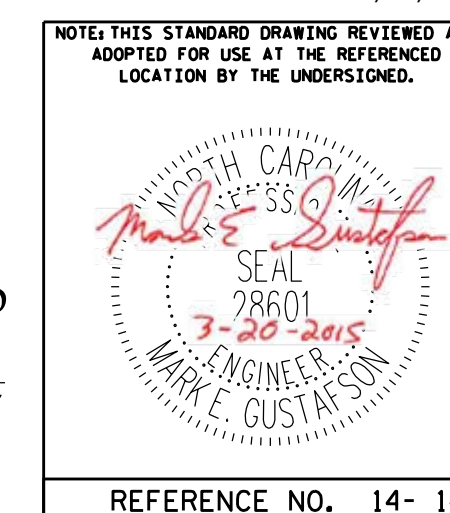
DRAWN BY :	JD GOODIN	DATE :	5/16/14
CHECKED BY :	MEG / JWT	DATE :	6/23/14
OC / QA BY :	TG ZEBLO	DATE :	7/7/14
DRAWN BY :	JMB 5/87	REV. 8/16/99	RWW/LES
CHECKED BY :	SJD 9/87	REV. 5/1/06	TLA/GM
		REV. 10/1/11	MAA/GM

PLAN PREPARED BY:



**ALPHA & OMEGA GROUP**  
CIVIL & STRUCTURAL ENGINEERS  
4601 Lake Boone Trail, Ste. 3C Raleigh, NC 27607  
Phone 919 981 0310 Fax 919 981 0451  
Firm License No. C-1684 www.aogroup.com  
A&O PROJECT NO. 2013.044

DocuSigned by:  
*Mark Gustafson*  
9E00EDB87408456...  
3/23/2015



PROJECT NO. R-2514D  
JONES COUNTY  
STATION: 561+15.20 -L-  
=17+04.80 -Y7-

STATE OF NORTH CAROLINA DEPARTMENT OF TRANSPORTATION RALEIGH					
STANDARD SUPERSTRUCTURE BILL OF MATERIAL RIGHT LANE					
REVISIONS					
NO.	BY:	DATE:	NO.	BY:	DATE:
1			3		
2			4		

SHEET NO. 14-14  
TOTAL SHEETS 21  
STRUCTURE NO. 14 STD. NO. BOM1