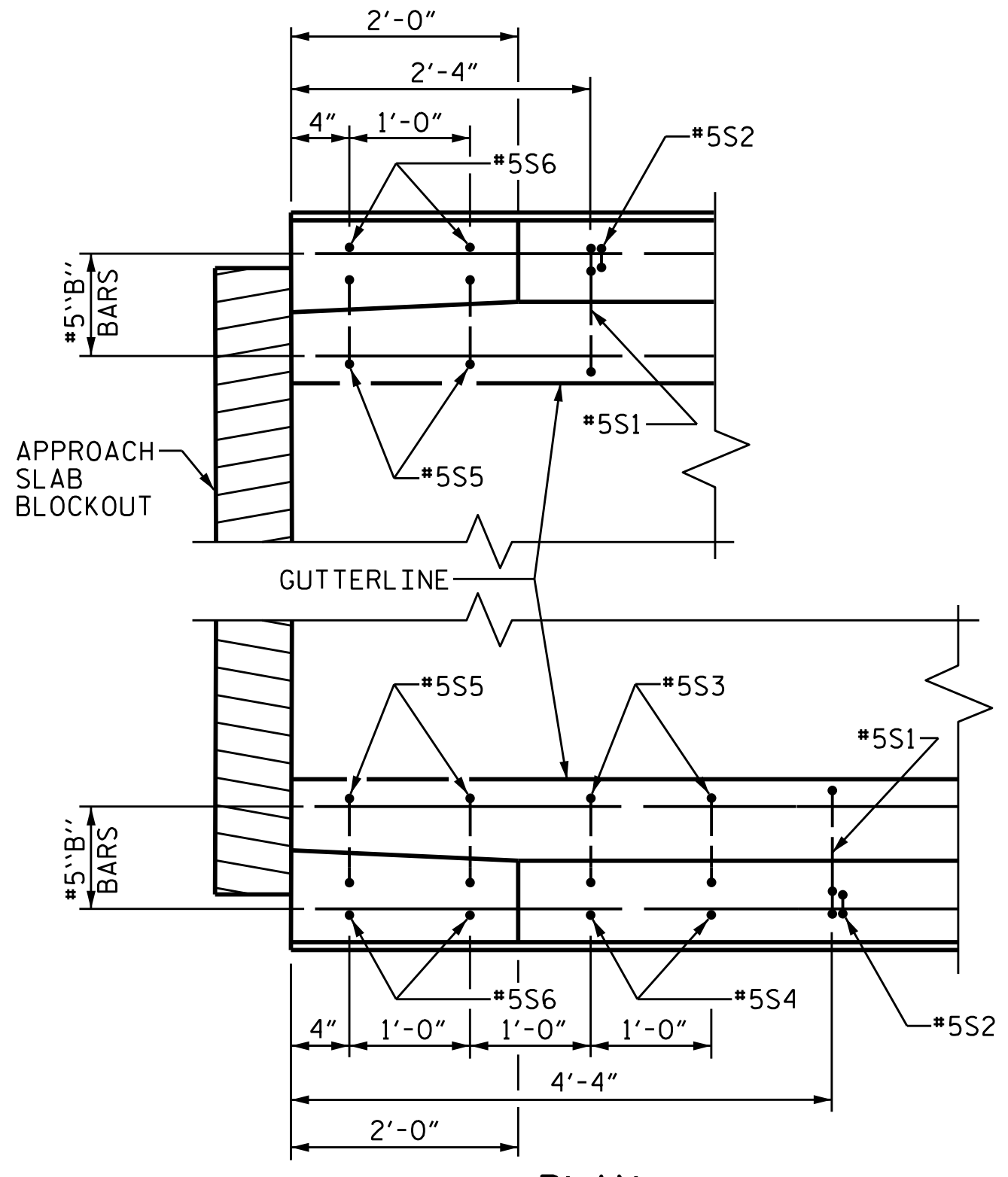
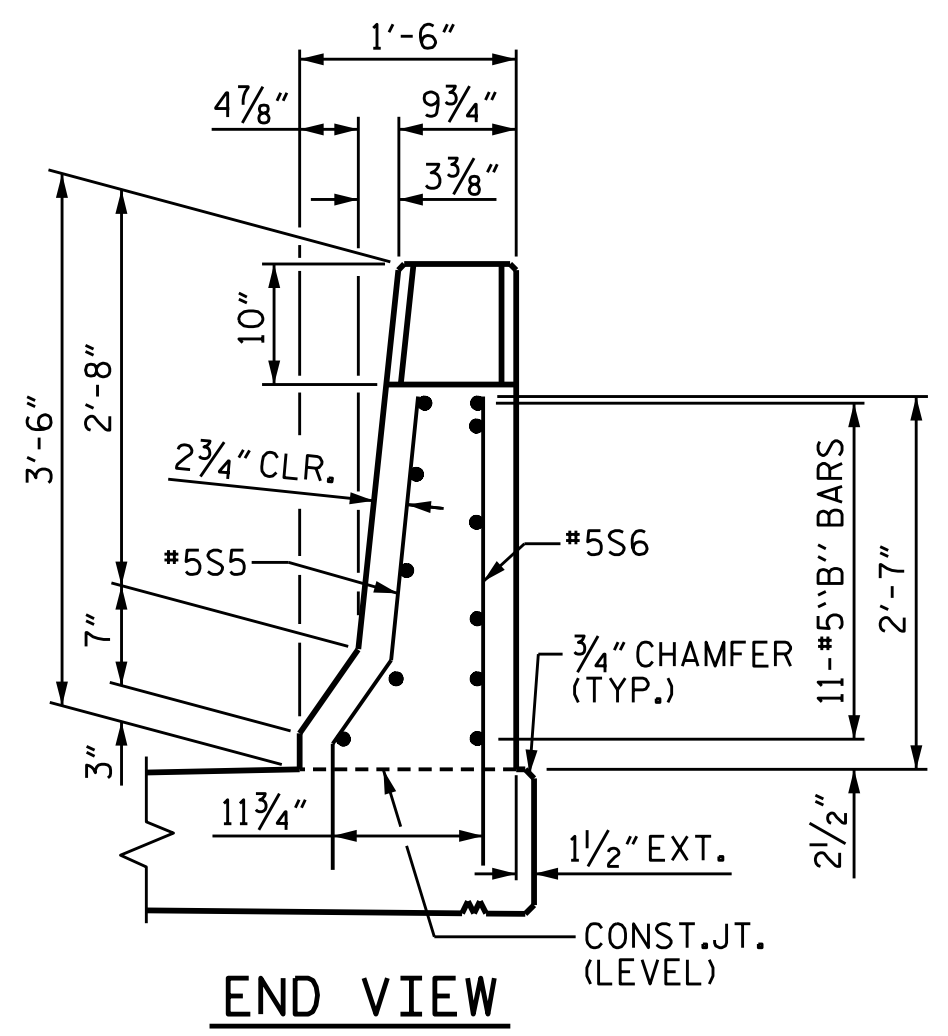


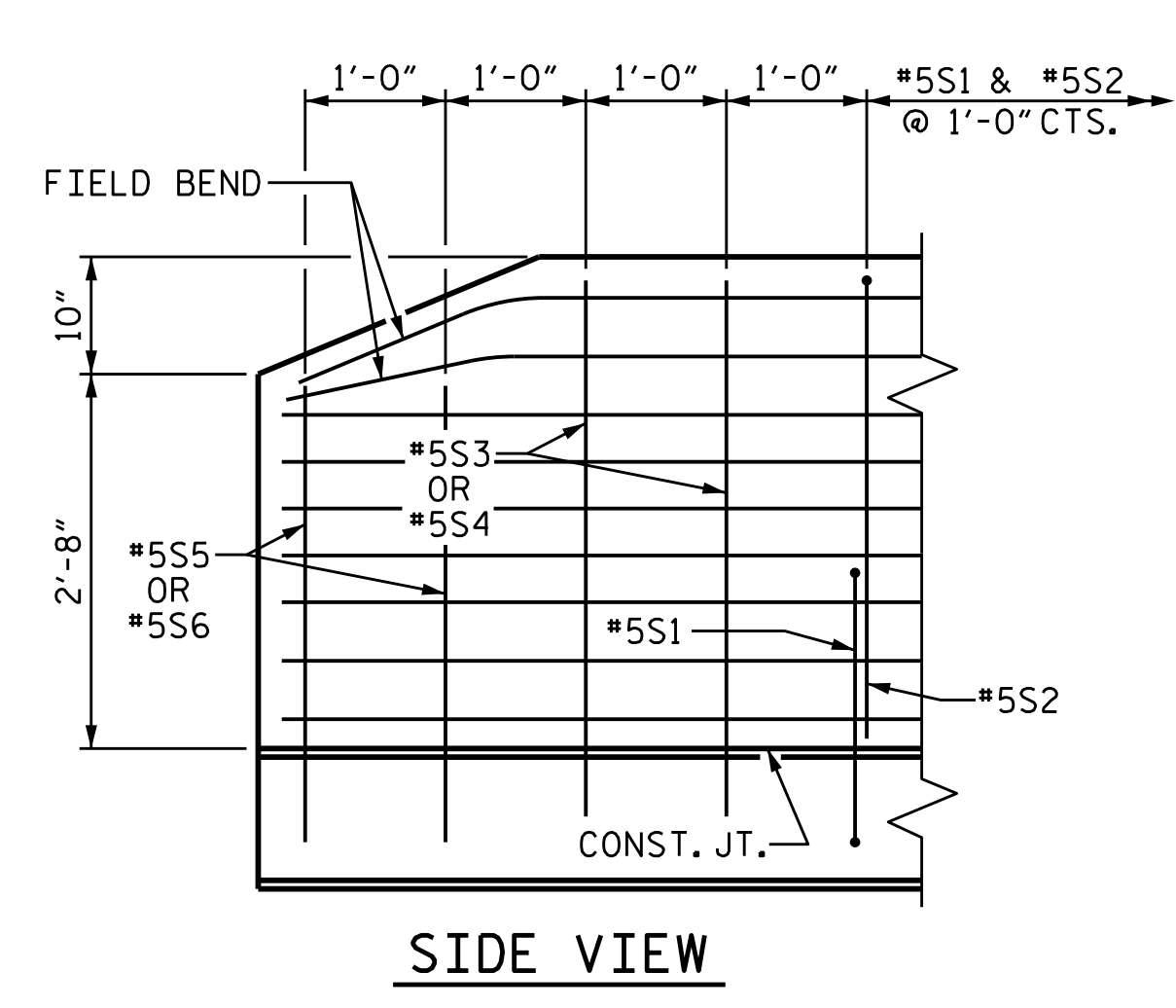
PLAN



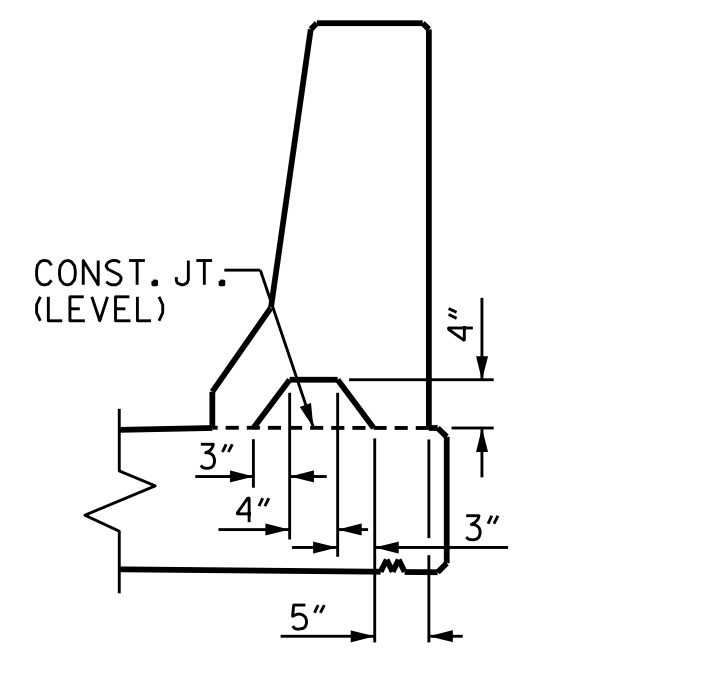
PLAN



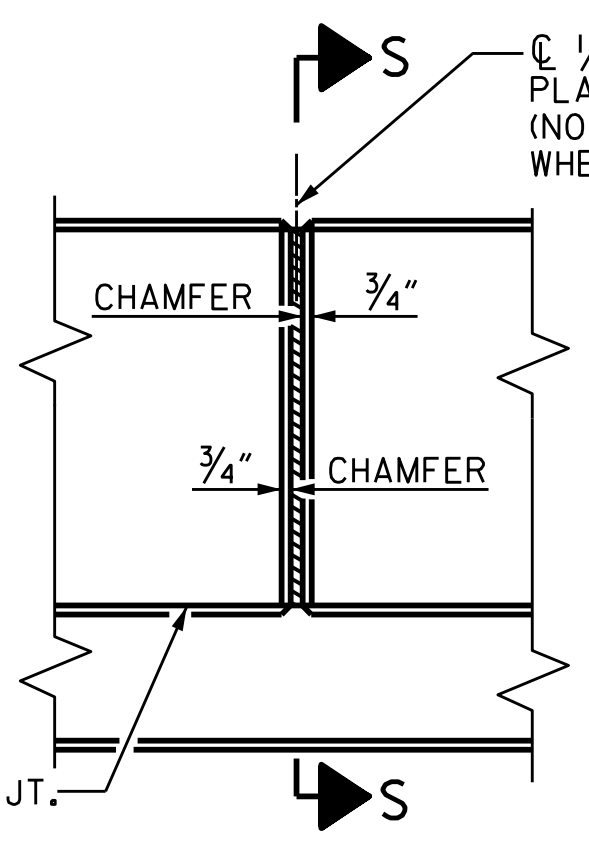
END VIEW



SIDE VIEW



SECTION "S-S"  
AT DAM IN OPEN JOINT  
(THIS IS TO BE USED ONLY  
WHEN SLIP FORM IS USED)



CONST. JT. (LEVEL)

ELEVATION AT EXPANSION JOINTS  
BARRIER RAIL DETAILS

PLAN PREPARED BY:

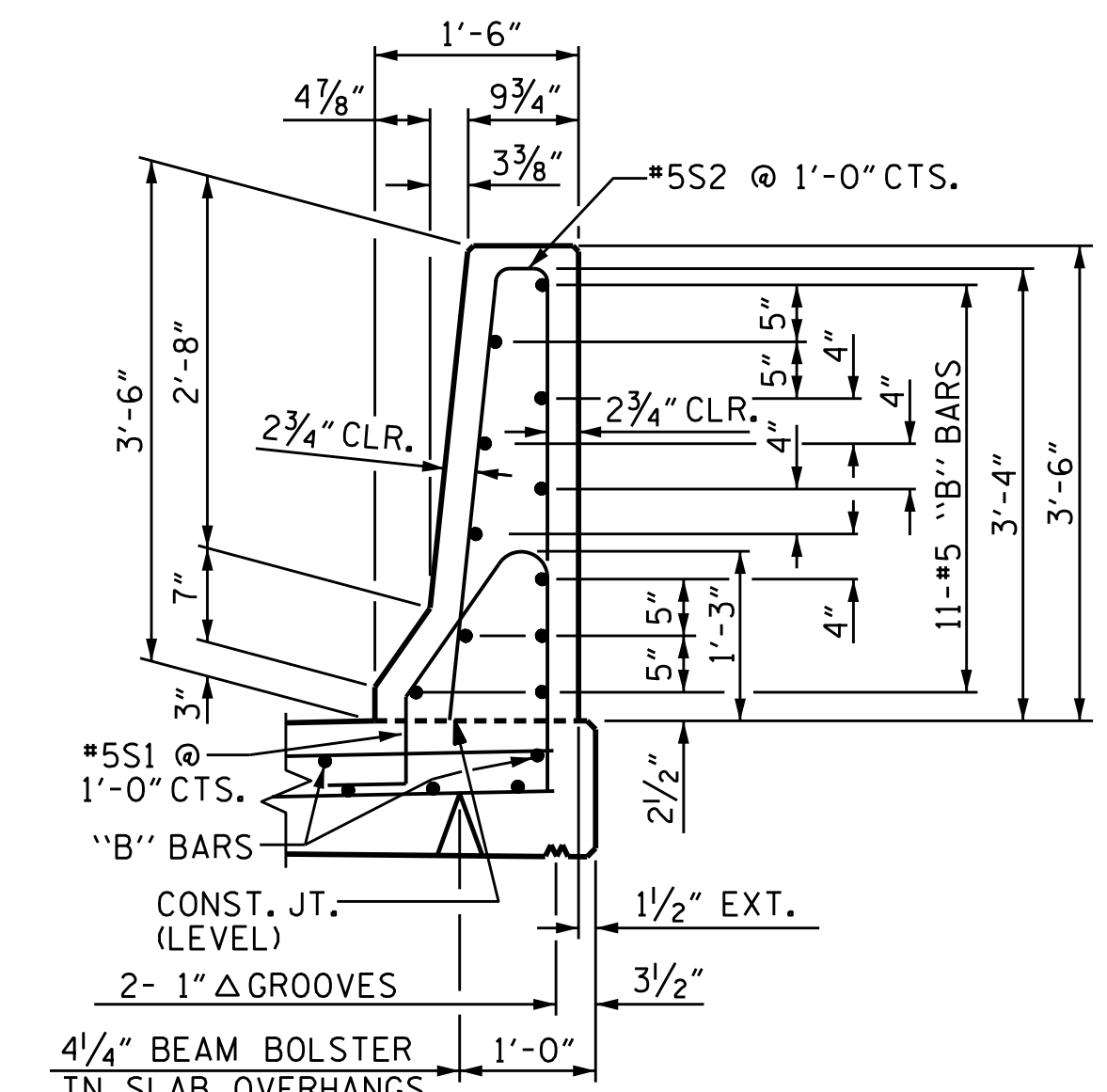


ALPHA & OMEGA GROUP  
CIVIL & STRUCTURAL ENGINEERS  
4601 Lake Boone Trail, Ste. 3C Raleigh, NC 27607  
Phone 919 981 0310 Fax 919 981 0451  
Firm License No. C-1684 www.aogroup.com  
A&O PROJECT NO. 2013.044

NOTE: THIS STANDARD DRAWING REVIEWED AND ADOPTED FOR USE AT THE REFERENCED LOCATION BY THE UNDERSIGNED.

REFERENCE NO. 14- 12

SECTION THRU RAIL



SECTION THRU RAIL

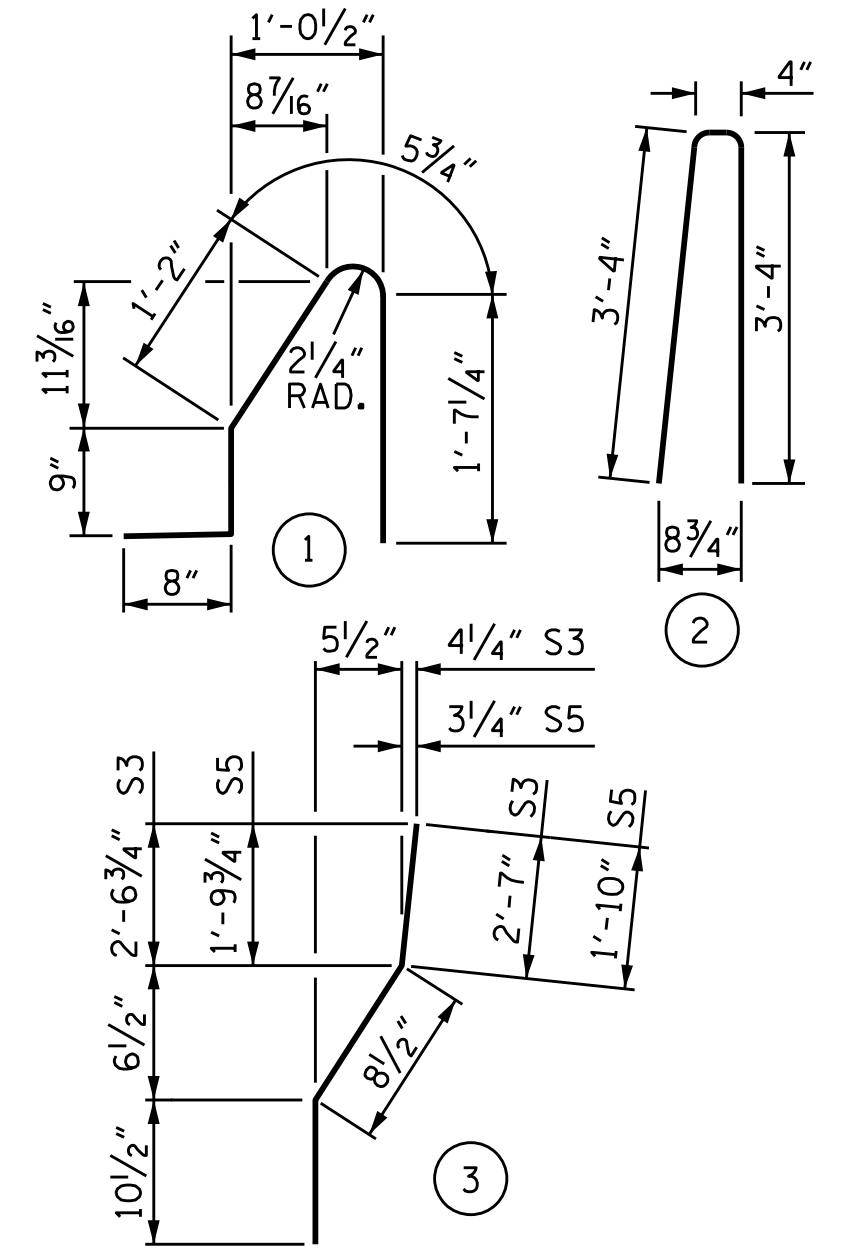
NOTES

THE BARRIER RAIL IN THE SPAN SHALL NOT BE CAST UNTIL ALL SLAB CONCRETE IN THE SPAN HAS BEEN CAST AND HAS REACHED A MINIMUM COMPRESSIVE STRENGTH OF 3,000 PSI.

ALL REINFORCING STEEL IN BARRIER RAILS SHALL BE EPOXY COATED.

GROOVED CONTRACTION JOINTS, 1/2" IN DEPTH, SHALL BE TOOLED IN ALL EXPOSED FACES OF THE BARRIER RAIL AND IN ACCORDANCE WITH ARTICLE 825-10(B) OF THE STANDARD SPECIFICATIONS. THE CONTRACTION JOINT SHALL BE LOCATED AT EACH THIRD POINT BETWEEN BARRIER RAIL EXPANSION JOINTS. ONLY ONE CONTRACTION JOINT IS REQUIRED AT MIDPOINT OF BARRIER RAIL SEGMENTS LESS THAN 20 FEET IN LENGTH AND NO CONTRACTION JOINTS ARE REQUIRED FOR THOSE SEGMENTS LESS THAN 10 FEET IN LENGTH.

BAR TYPES



ALL BAR DIMENSIONS ARE OUT TO OUT.

BILL OF MATERIAL

FOR CONCRETE BARRIER RAIL ONLY					
BAR	NO.	SIZE	TYPE	LENGTH	WEIGHT
* S1	158	#5	1	4'-8"	769
* S2	158	#5	2	7'-0"	1154
* S3	4	#5	3	4'-2"	17
* S4	4	#5	STR	4'-0"	17
* S5	8	#5	3	3'-5"	29
* S6	8	#5	STR	3'-3"	27
* B1	44	#5	STR	29'-8"	1361
* B2	22	#5	STR	24'-8"	566
* EPOXY COATED					
REINFORCING STEEL					3940 LBS.
CLASS AA CONCRETE					23.1 CU. YDS.
CONCRETE BARRIER RAIL					170.00 L.F.

DRAWN BY: JD GOODIN DATE: 5/16/14  
 CHECKED BY: MEG / JMT DATE: 6/23/14  
 QC / QA BY: TG ZEBLO DATE: 7/7/14  
 DRAWN BY: ARB 5/87 REV. 10/11 MAA/GM  
 CHECKED BY: SJD 9/87 REV. 7/12 MAA/GM

END OF RAIL DETAILS

FOR ADHESIVE ANCHORING AT SAWED JOINTS.

DocuSigned by:  
**Mark Gustafson**  
 9E00EDB87408456...  
 3/23/2015

PROJECT NO. R-2514D  
 JONES COUNTY  
 STATION: 561+15.20 -L-  
 =17+04.80 -Y7-

STATE OF NORTH CAROLINA  
 DEPARTMENT OF TRANSPORTATION  
 RALEIGH

STANDARD  
 CONCRETE  
 BARRIER RAIL  
 RIGHT LANE

REVISIONS				SHEET NO.	
NO.	BY:	DATE:	NO.	BY:	DATE:
1			3		
2			4		

TOTAL SHEETS  
 21

STRUCTURE NO. 14 STD. NO. CBR1