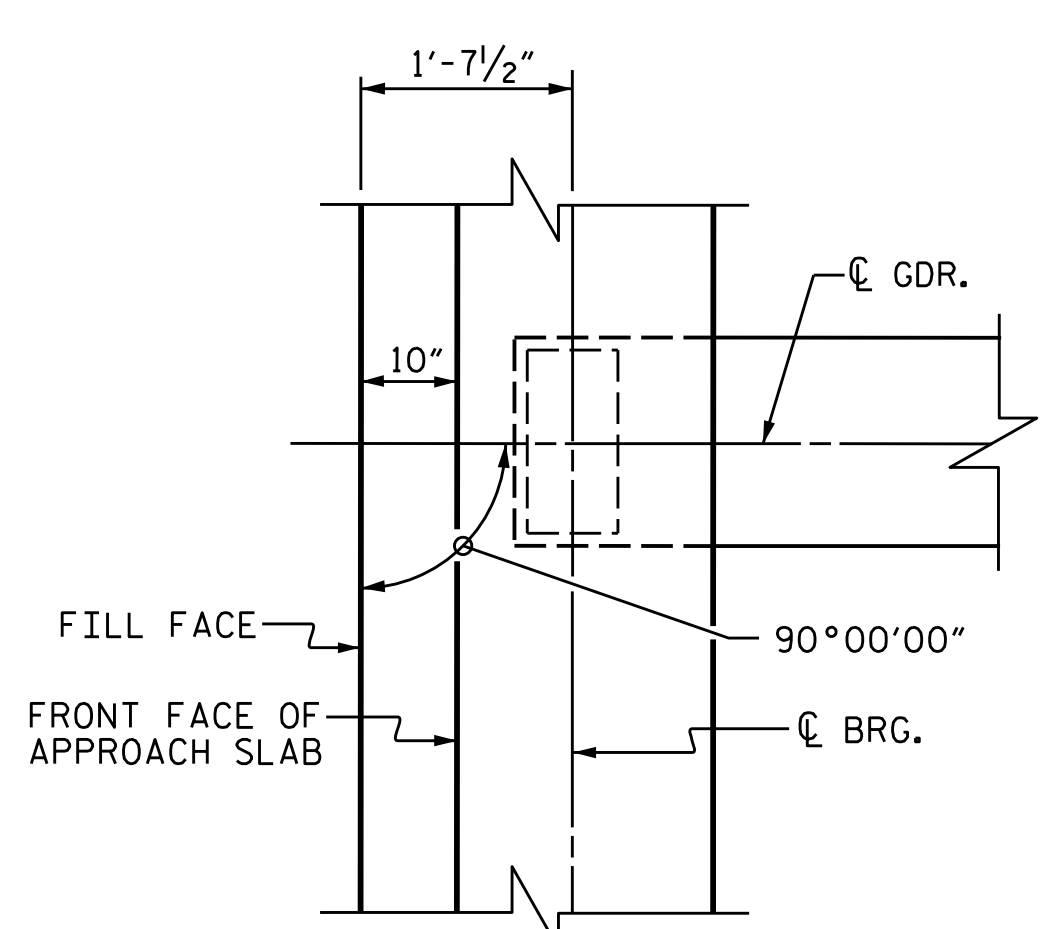
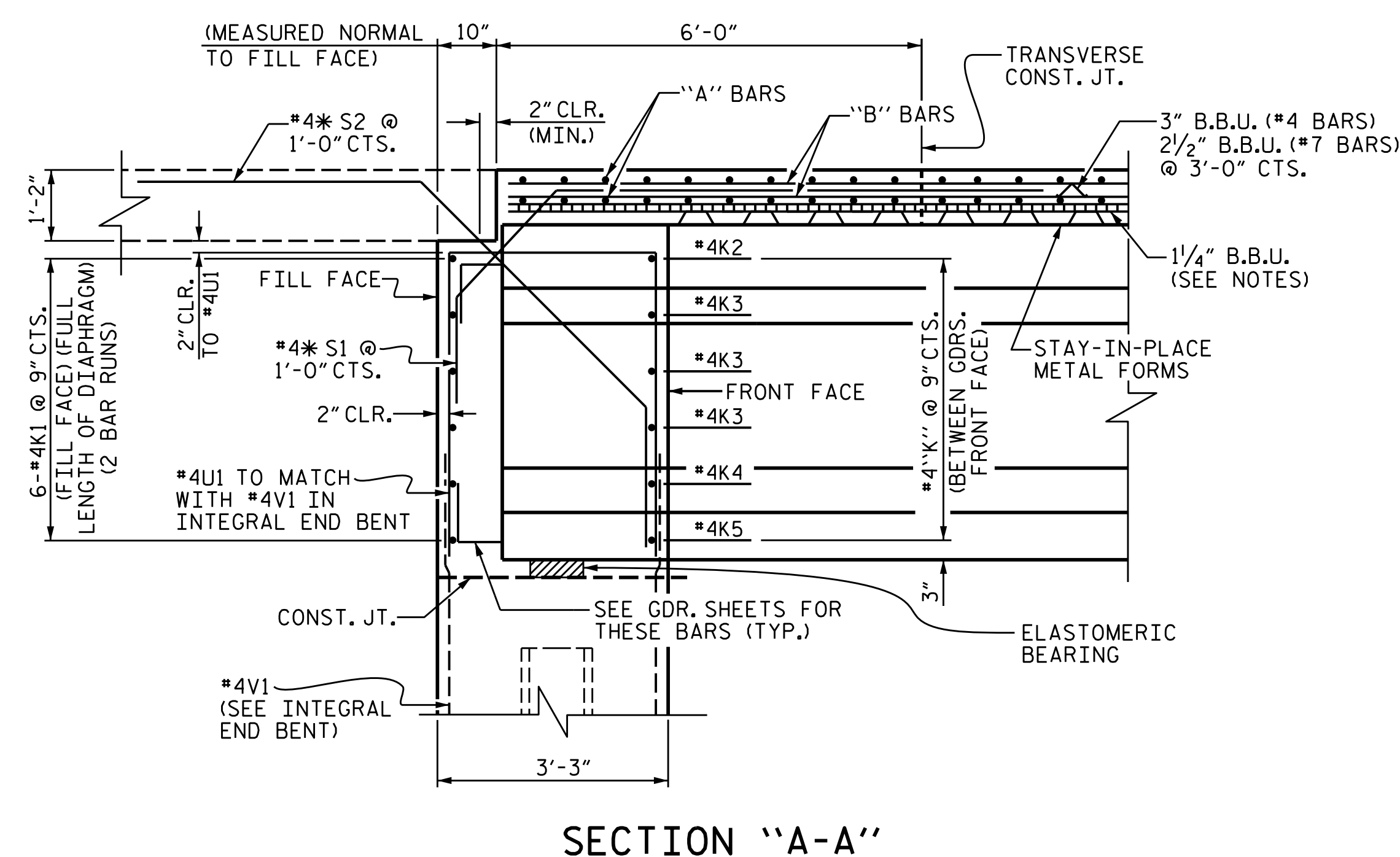


**TYPICAL SECTION**



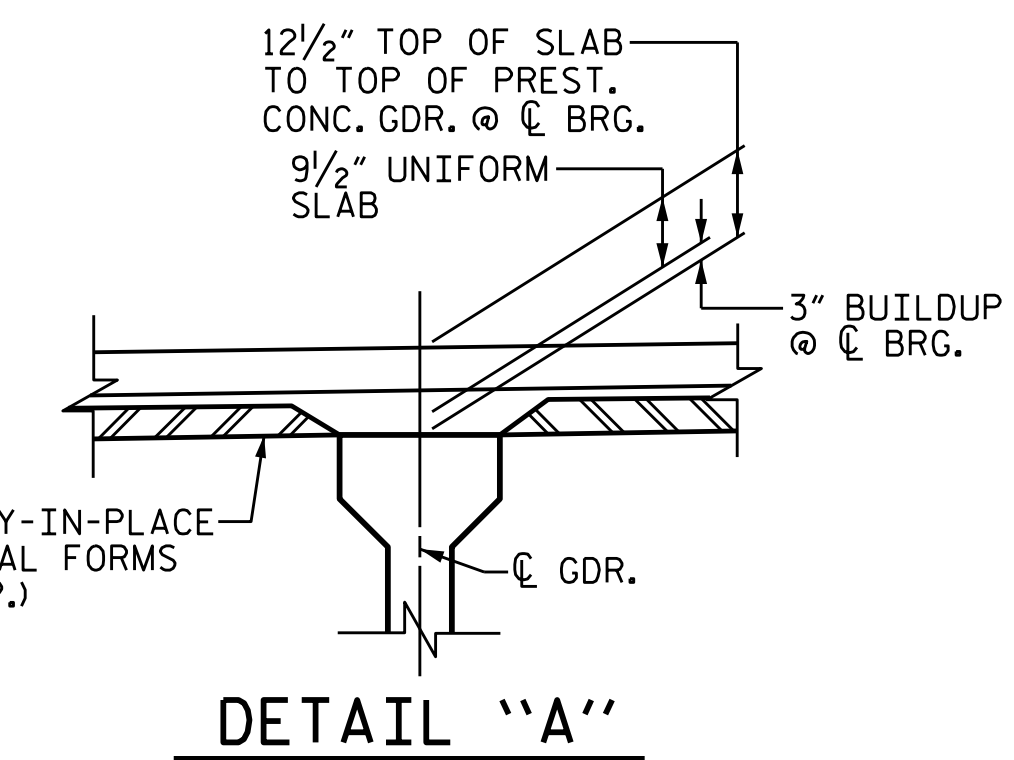
**NOTES**

PROVIDE 1 1/4" HIGH BEAM BOLSTERS UPPER @ 4'-0" CTS. ATOP THE METAL STAY-IN-PLACE FORMS TO SUPPORT THE BOTTOM MAT OF "A" BARS. WHEN USING REMOVABLE FORMS, PROVIDE CONTINUOUS HIGH CHAIRS FOR METAL DECK (C.H.C.M.) AT 4'-0" CTS. WITH A HEIGHT TO SUPPORT THE BOTTOM MAT OF "A" BARS A CLEAR DISTANCE OF 2 1/2" ABOVE THE TOP OF THE REMOVABLE FORM.

LONGITUDINAL STEEL MAY BE SHIFTED SLIGHTLY, AS NECESSARY, TO AVOID INTERFERENCE WITH STIRRUPS IN PRESTRESSED CONCRETE GIRDERS.

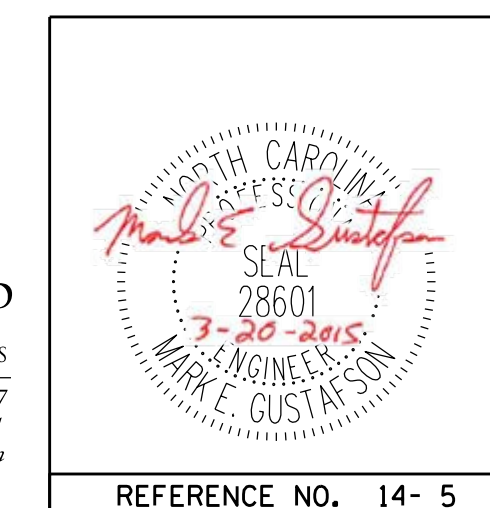
SEE "SECTION THRU RAIL" ON SHEET 14-12 FOR DRIP GROOVES AND BEAM BOLSTERS IN OVERHANG.

FOR LOCATION OF SECTIONS, SEE "PLAN OF SPAN" SHEET.



PROJECT NO. R-2514D  
 JONES COUNTY  
 STATION: 561+15.20 -L-  
 =17+04.80 -Y7-

DocuSigned by:  
 Mark Gustafson  
 9E00EDB87408456...  
 3/23/2015



STATE OF NORTH CAROLINA DEPARTMENT OF TRANSPORTATION RALEIGH					
<b>SUPERSTRUCTURE TYPICAL SECTION RIGHT LANE</b>					
REVISIONS					
NO.	BY:	DATE:	NO.	BY:	DATE:
1			3		
2			4		
					SHEET NO. <b>S14-5</b> TOTAL SHEETS <b>21</b>

DRAWN BY: JD GOODIN DATE: 5/16/14  
 CHECKED BY: MEG / JWT DATE: 6/23/14  
 QC / OA BY: TG ZEBLO DATE: 7/7/14

PLAN PREPARED BY:  
  
**ALPHA & OMEGA GROUP**  
 CIVIL & STRUCTURAL ENGINEERS  
 4601 Lake Boone Trail, Ste. 3C Raleigh, NC 27607  
 Phone 919 981 0310 Fax 919 981 0451  
 Firm License No. C-1684 www.aogroup.com  
 A&O PROJECT NO. 2013.044

REFERENCE NO. 14- 5

STRUCTURE NO. 14