

FOUNDATION LAYOUT

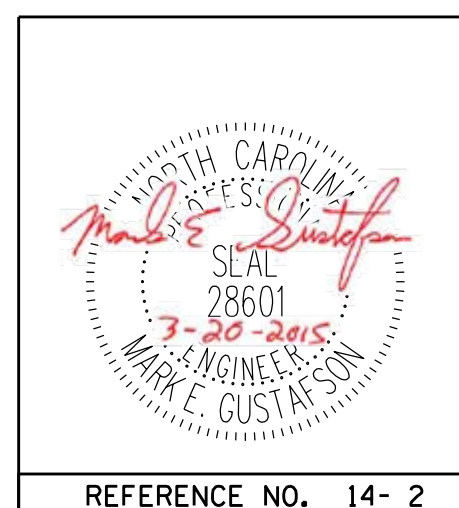
DIMENSIONS LOCATING PILES ARE SHOWN TO THE PILE CENTERLINE AT THE BOTTOM OF THE CAP.

NOTES

- PILES AT END BENT NO.1 AND END BENT NO.2 ARE DESIGNED FOR A FACTORED RESISTANCE OF 110 TONS PER PILE.
- DRIVE PILES AT END BENT NO.1 AND END BENT NO.2 TO A REQUIRED DRIVING RESISTANCE OF 150 TONS PER PILE.
- FOR PILES, SEE SECTION 450 OF THE STANDARD SPECIFICATIONS.
- TESTING THE FIRST PRODUCTION PILE WITH THE PDA DURING DRIVING, RESTRIKING OR REDRIVING IS REQUIRED AT END BENT NO.1 OR END BENT NO.2. FOR PDA TESTING, SEE SECTION 450 OF THE STANDARD SPECIFICATIONS.

PROJECT NO. R-2514D
JONES COUNTY
 STATION: 561+15.20 -L-
=17+04.80 -Y7-
 SHEET 2 OF 3

DocuSigned by:
 Mark Gustafson
 9E00EDB87408456...
 3/23/2015



STATE OF NORTH CAROLINA
 DEPARTMENT OF TRANSPORTATION
 RALEIGH

GENERAL DRAWING
 BRIDGE OVER SR 1330
 ON US 17
 BETWEEN NC 58
 & US 17 CONNECTOR
 (RIGHT LANE)

REVISIONS						SHEET NO.
NO.	BY:	DATE:	NO.	BY:	DATE:	S14-2
1			3			TOTAL SHEETS
2			4			21

PLAN PREPARED BY:



ALPHA & OMEGA GROUP
 CIVIL & STRUCTURAL ENGINEERS
 4601 Lake Boone Trail, Ste. 3C Raleigh, NC 27607
 Phone 919 981 0310 Fax 919 981 0451
 Firm License No. C-1684 www.aogroup.com
 A&O PROJECT NO. 2013.044

REFERENCE NO. 14- 2

STRUCTURE NO. 14

DRAWN BY : JD GOODIN DATE : 5/16/14
 CHECKED BY : MEG / JWT DATE : 6/23/14
 QC / QA BY : TG ZEBLO DATE : 7/7/14