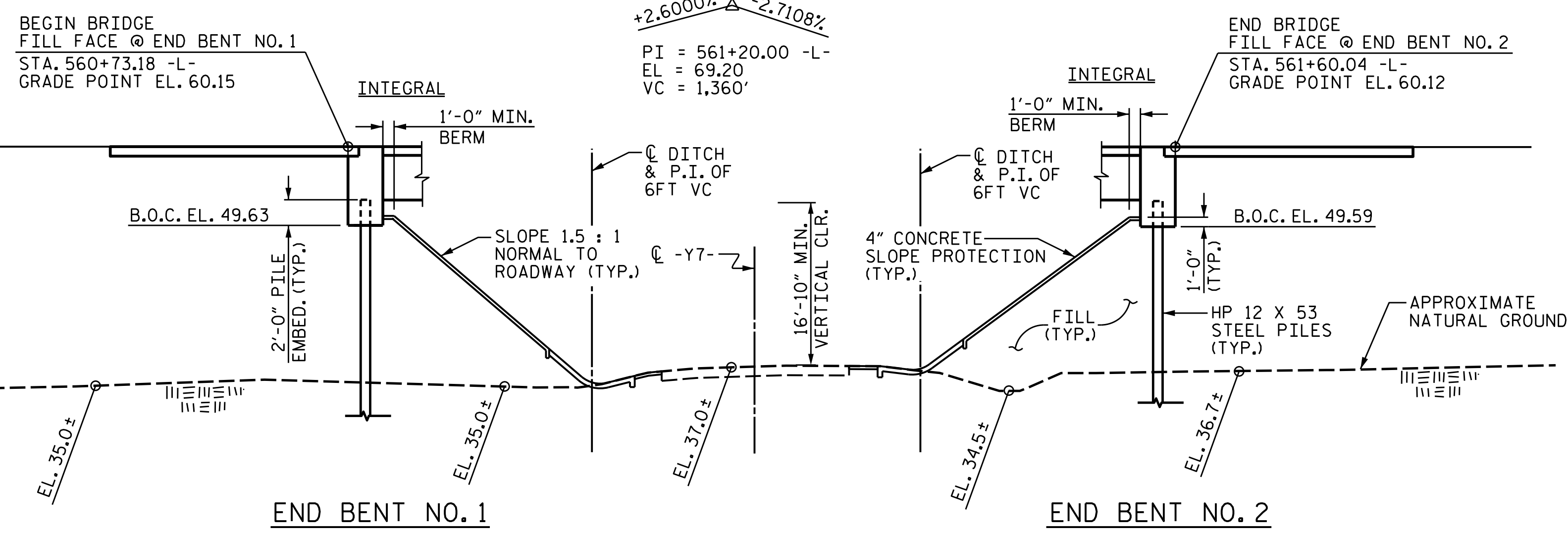


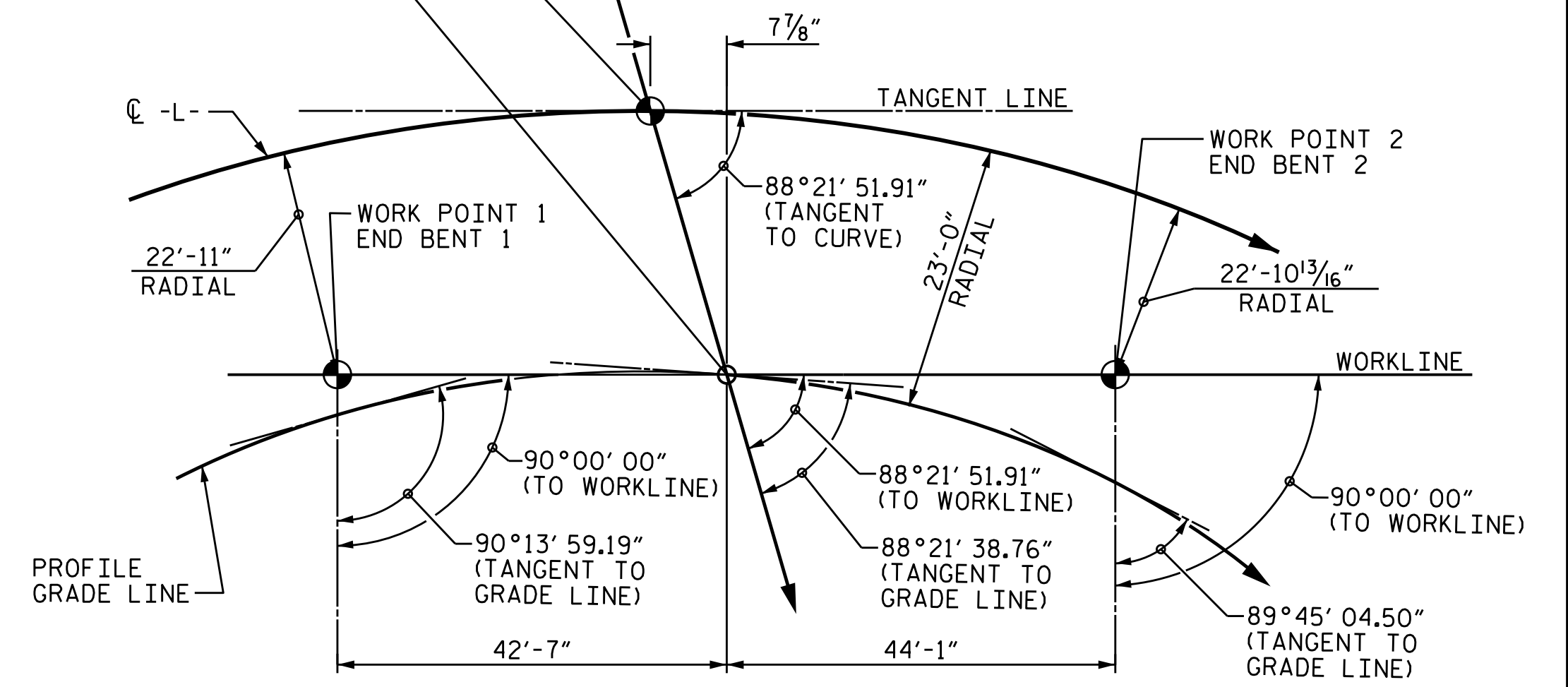
560+50 561+00 561+50 562+00

VERTICAL GRADE DATA



BRIDGE ID
 POC STA. 561+15.20 -L- =
 POT STA. 17+04.80 -Y7-

POC STA. 561+15.86 -L- =
 POT STA. 17+27.81 -Y7-



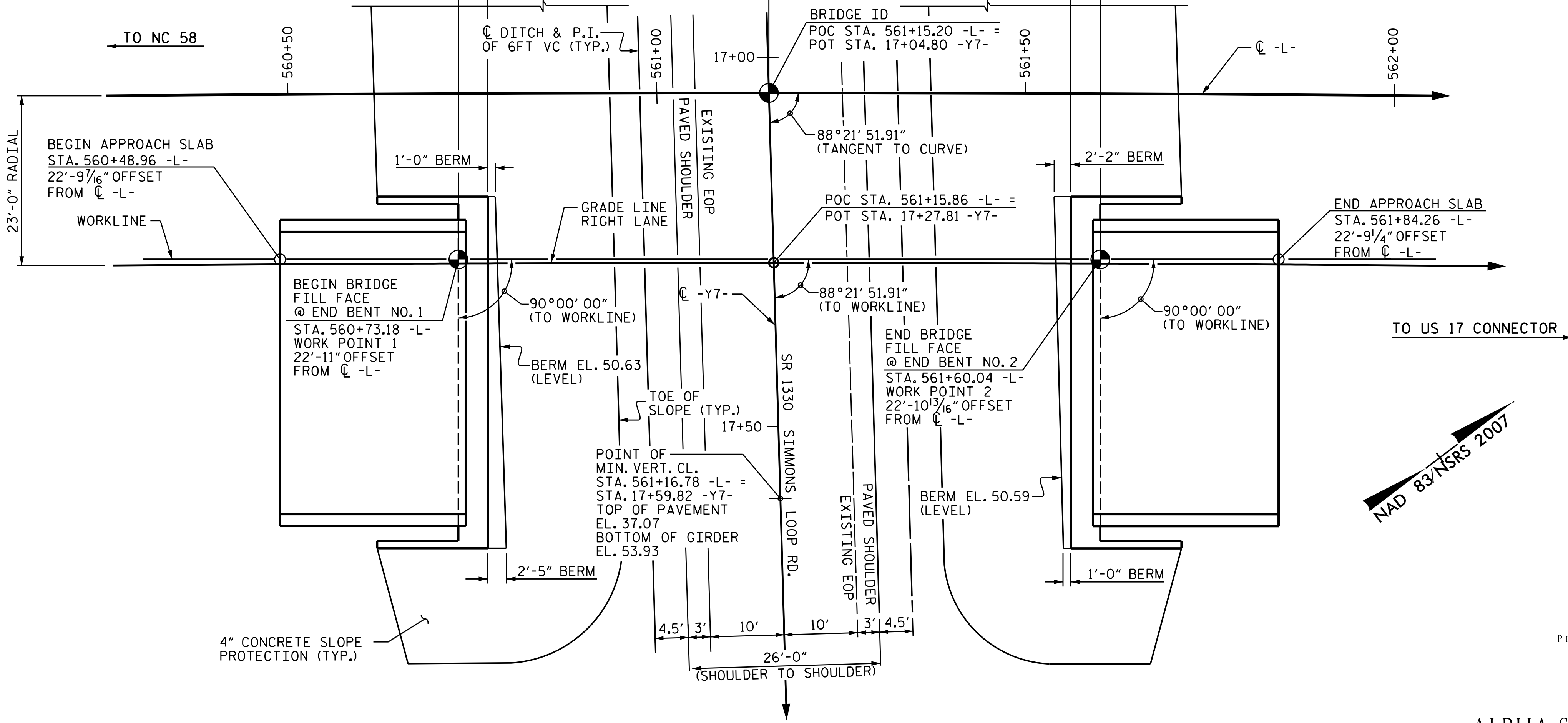
SECTION ALONG GRADE LINE - RIGHT LANE

SECTIONS AT END BENTS ARE AT RIGHT ANGLES

TOTAL BRIDGE LENGTH = 86'-8" (SPAN "A")
 (FILL FACE @ END BENT NO. 1 TO FILL FACE @ END BENT NO. 2 ALONG WORKLINE)

41'-11¹/₈" (ALONG WORKLINE) 44'-8⁷/₈" (ALONG WORKLINE)

HORIZONTAL CLEARANCE = 80'-2"

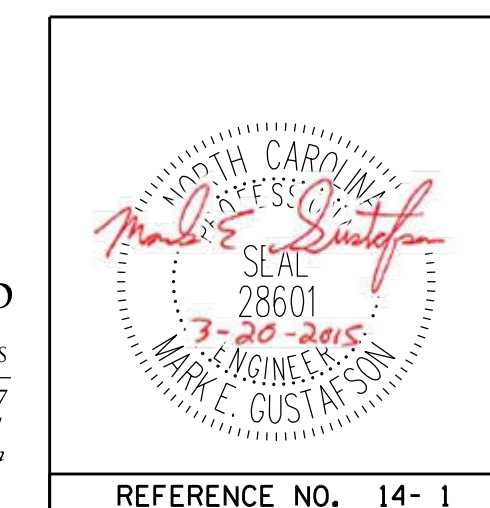


HORIZONTAL CURVE DATA -L-

PI = 571+12.36
 Δ = 28°45' 22.4" (RT)
 D = 0°33' 17.1"
 L = 5,183.63'
 T = 2,647.63'
 R = 10,328.19'
 SE = .025
 RO = 90'

PROJECT NO. R-2514D
 JONES COUNTY
 STATION: 561+15.20 -L-
 =17+04.80 -Y7-
 SHEET 1 OF 3 BRIDGE NO. 108

DocuSigned by:
 Mark Gustafson
 9E00EDB87408456...
 3/23/2015



PLAN PREPARED BY:

ALPHA & OMEGA GROUP
 CIVIL & STRUCTURAL ENGINEERS
 4601 Lake Boone Trail, Ste. 3C Raleigh, NC 27607
 Phone 919 981 0310 Fax 919 981 0451
 Firm License No. C-1684 www.aogroup.com
 A&O PROJECT NO. 2013.044

STATE OF NORTH CAROLINA DEPARTMENT OF TRANSPORTATION RALEIGH					
GENERAL DRAWING BRIDGE OVER SR 1330 ON US 17 & US 17 CONNECTOR (RIGHT LANE)					
REVISIONS					
NO.	BY:	DATE:	NO.	BY:	DATE:
1			3		
2			4		
SHEET NO. S14-1					TOTAL SHEETS 21
REFERENCE NO. 14-1					
STRUCTURE NO. 14					

DRAWN BY: JD GOODIN DATE: 5/16/14
 CHECKED BY: MEG / JWT DATE: 6/23/14
 QC / OA BY: TG ZEBLO DATE: 7/7/14

PLAN ALONG GRADE LINE - RIGHT LANE

PILES NOT SHOWN FOR CLARITY