

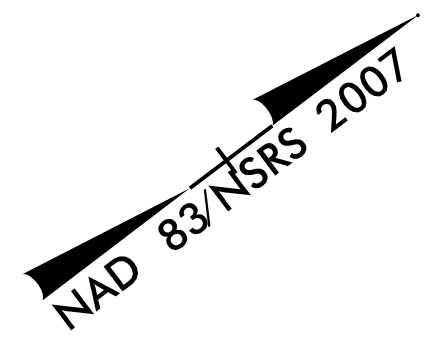
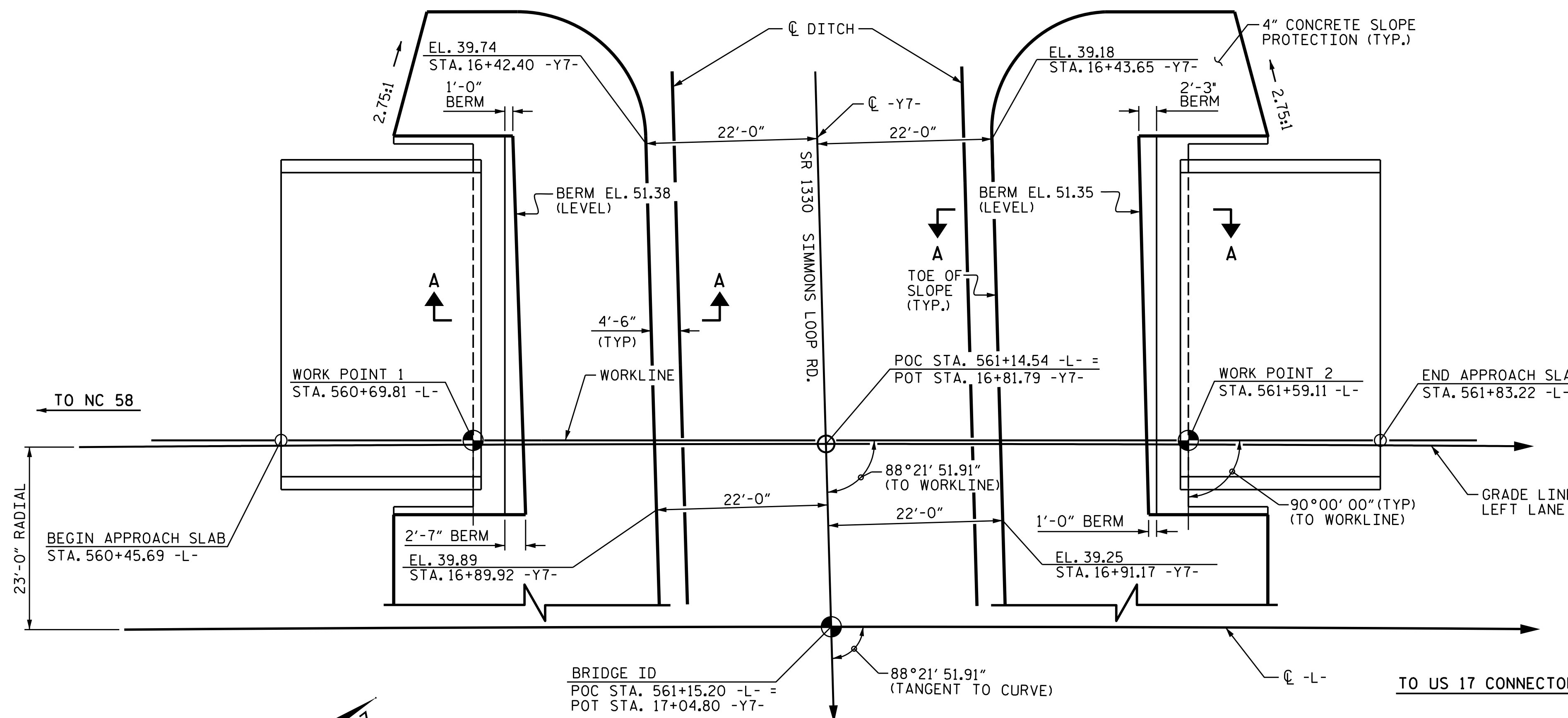
### GENERAL NOTES

SLOPE PROTECTION SHALL BE PLACED UNDER THE ENDS OF THE BRIDGE AS SHOWN IN THE DETAILS. STRAIGHT EDGING WILL NOT BE REQUIRED UNLESS, IN THE OPINION OF THE ENGINEER, VISUAL INSPECTION INDICATES A NEED FOR IT. MEASUREMENT AND PAYMENT SHALL BE AS PRESCRIBED IN SECTION 462 OF THE STANDARD SPECIFICATIONS. FOR BERM WIDTH, SEE GENERAL DRAWING.

SLOPE PROTECTION SHALL CONSIST OF 4" POURED-IN-PLACE CONCRETE PAVING AS SHOWN IN THE DETAILS ON THIS SHEET. CONCRETE SHALL BE CLASS "B". THE CONCRETE SURFACE SHALL BE FLOATED WITH A WOODEN FLOAT AND FINISHED. WELDED WIRE FABRIC REINFORCING SHALL BE 6 X 6 - W1.4 X W1.4, 60" WIDE. SLOPE PROTECTION SHALL BE POURED IN 5' STRIPS AS SHOWN IN THE "POURING DETAIL" WITH 2'-0" LONG #4 BARS PLACED ALONG THE SLOPE BETWEEN STRIPS AT 1'-6" MAXIMUM SPACING. SLOPE PROTECTION MAY BE POURED IN ALTERNATE 4' AND 5' STRIPS AS SHOWN IN THE "OPTIONAL POURING DETAIL" WITH ADJACENT RUNS OF WELDED WIRE FABRIC LAPPING AT LEAST 6". THE COST OF THE WELDED WIRE FABRIC AND #4 BARS, IF USED, SHALL BE INCLUDED IN THE CONTRACT UNIT PRICE BID PER SQUARE YARD FOR SLOPE PROTECTION.

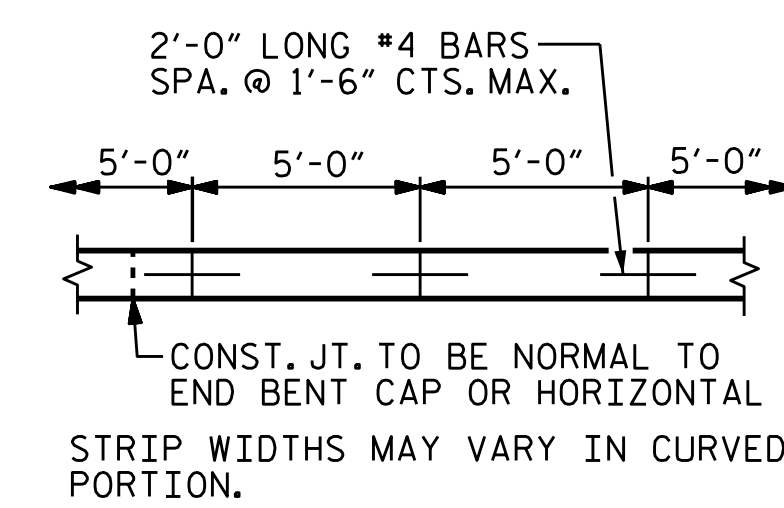
BRIDGE @ STA.	4 INCH SLOPE PROTECTION	* WELDED WIRE FABRIC 60 INCHES WIDE
	SQUARE YARDS	APPROX. L.F.
561+15.20 -L-		
END BENT NO. 1	264	476
END BENT NO. 2	260	468

\* QUANTITY SHOWN IS BASED ON 5' POURS.

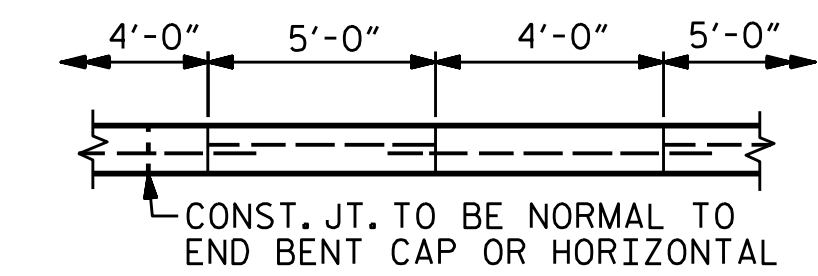


### PLAN ALONG WORKLINE - LEFT LANE

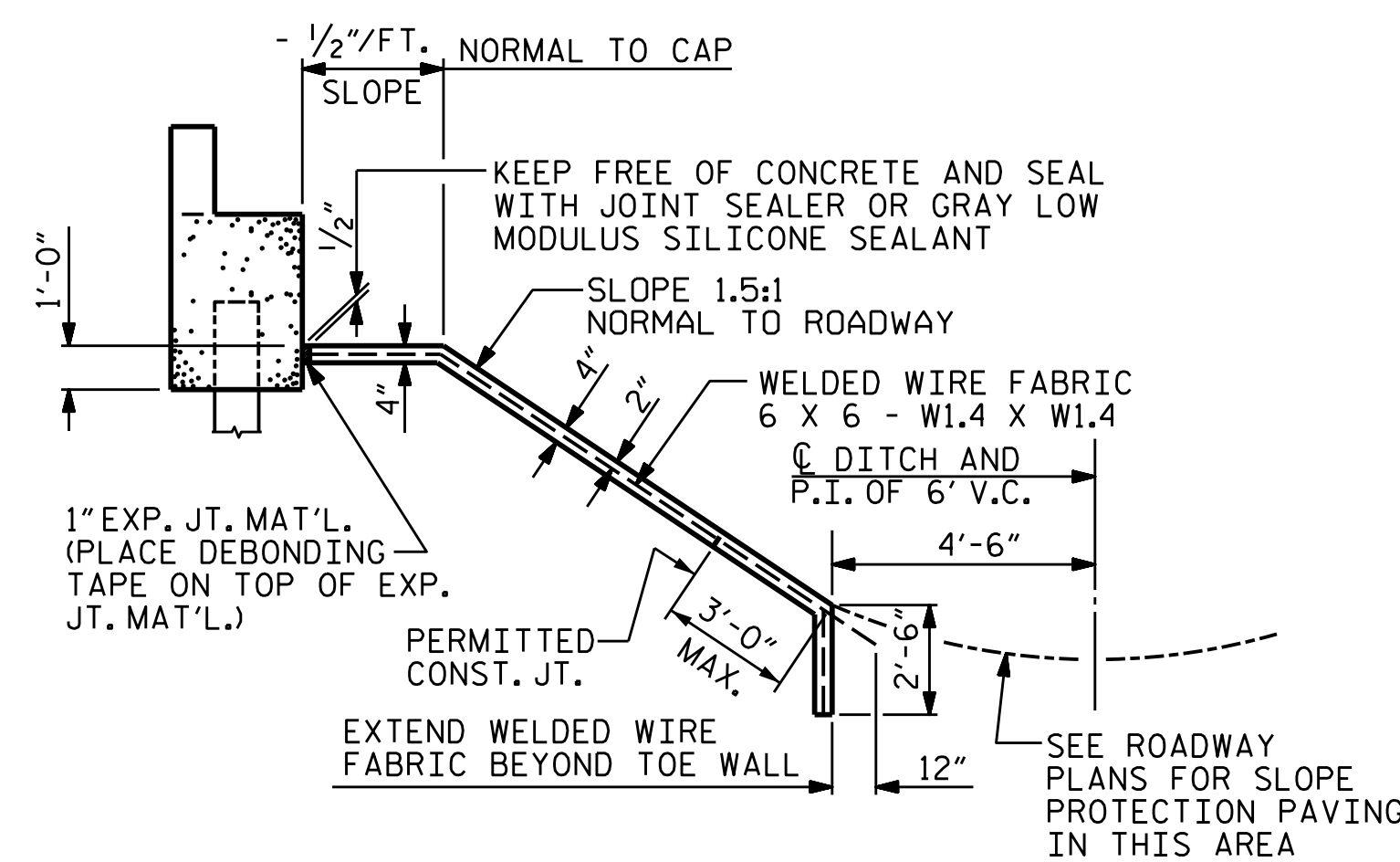
PILES ARE NOT SHOWN IN PLAN VIEW



POURING DETAIL



OPTIONAL POURING DETAIL



SECTION A-A

PROJECT NO. R-2514D  
JONES COUNTY  
 STATION: 561+15.20 -L-  
=17+04.80 -Y7-

DocuSigned by:  
 Mark Gustafson  
 9E00EDB87408456...  
 3/23/2015



STATE OF NORTH CAROLINA DEPARTMENT OF TRANSPORTATION RALEIGH					
STANDARD SLOPE PROTECTION DETAILS LEFT LANE					
REVISIONS					
NO.	BY:	DATE:	NO.	BY:	DATE:
1			3		
2			4		

SHEET NO. **S13-20**  
TOTAL SHEETS **21**

DRAWN BY : <u>JD GOODIN</u>	DATE : <u>5/16/14</u>	
CHECKED BY : <u>MEG / HMS</u>	DATE : <u>6/23/14</u>	
QC / QA BY : <u>TG ZEBLO</u>	DATE : <u>7/7/14</u>	
DRAWN BY : <u>ELR 5/92</u>	REV. 5/1/06	TLA/GM
CHECKED BY : <u>GRP 6/92</u>	REV. 10/1/11	MAA/GM
	REV. 12/21/11	MAA/GM

PLAN PREPARED BY:  
  
**ALPHA & OMEGA GROUP**  
 CIVIL & STRUCTURAL ENGINEERS  
 4601 Lake Boone Trail, Ste. 3C Raleigh, NC 27607  
 Phone 919 981 0310 Fax 919 981 0451  
 Firm License No. C-1684 www.aogroup.com  
 A&O PROJECT NO. 2013.044

REFERENCE NO. 13-20