

NOTES

THE #4V1 BARS IN CAP MAY BE SHIFTED SLIGHTLY TO AVOID STIRRUPS IN CAP.

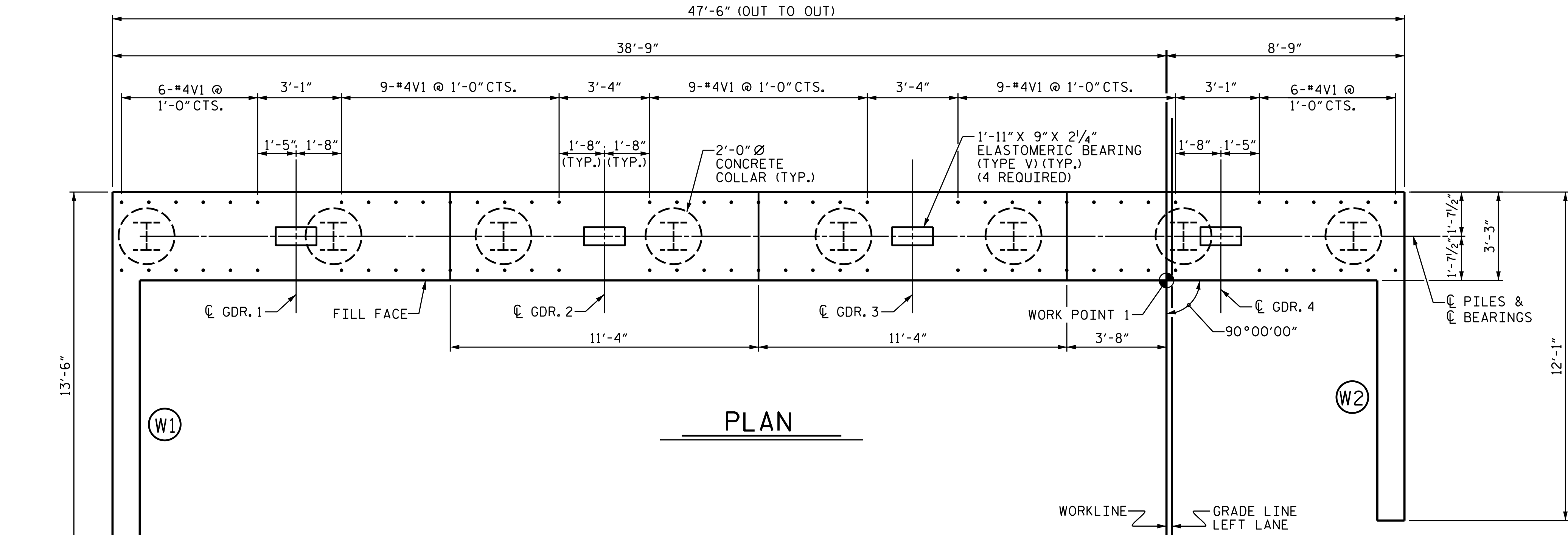
FOR PILE SPlice DETAILS, SEE SHEET 2 OF 5.

FOR WING DETAILS, SEE SHEET 5 OF 5.

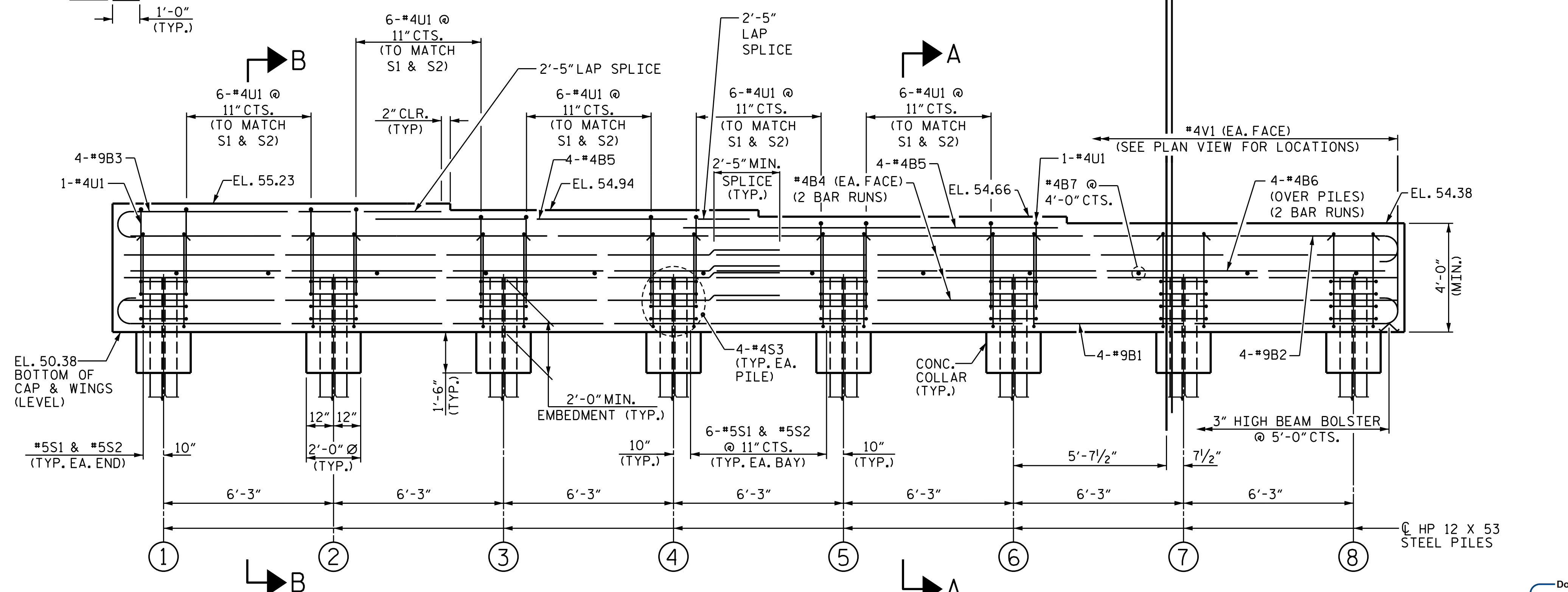
THE TOP SURFACE OF THE CAP AND WINGS, EXCLUDING THE BEARING AREA, SHALL BE RAKED TO A DEPTH OF 1/4".

SEE SUPERSTRUCTURE SHEETS FOR UPPER PART OF THE INTEGRAL END BENT DETAILS.

INSTALL THE 4" DIAMETER DRAIN PIPE THROUGH THE WING WALL AS REQUIRED FOR REINFORCED BRIDGE APPROACH FILLS, SEE THE ROADWAY PLANS. REINFORCING STEEL IN THE WING WALL MAY BE SHIFTED AS NECESSARY TO CLEAR THE DRAIN PIPE.



PLAN

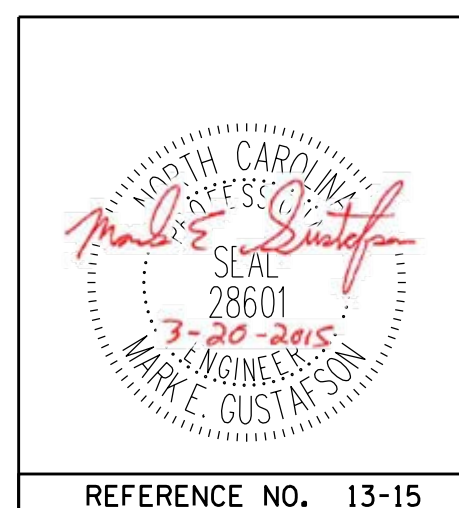


ELEVATION

FOR SECTION "A-A" AND PARTIAL SECTION "B-B", SEE SHEET 2 OF 5.

PROJECT NO. R-2514D
JONES COUNTY
 STATION: 561+15.20 -L-
=17+04.80 -Y7-
 SHEET 1 OF 5

DocuSigned by:
 Mark Gustafson
 9E00EDB87408456...
 3/23/2015



STATE OF NORTH CAROLINA DEPARTMENT OF TRANSPORTATION RALEIGH					
SUBSTRUCTURE END BENT NO. 1 LEFT LANE					
REVISIONS					
NO.	BY:	DATE:	NO.	BY:	DATE:
1			3		
2			4		
					SHEET NO. S13-15 TOTAL SHEETS 21

DRAWN BY: JD GOODIN DATE: 5/16/14
 CHECKED BY: MEG / HMS DATE: 6/23/14
 QC / QA BY: TG ZEBLO DATE: 7/7/14

PLAN PREPARED BY:

ALPHA & OMEGA GROUP
 CIVIL & STRUCTURAL ENGINEERS
 4601 Lake Boone Trail, Ste. 3C Raleigh, NC 27607
 Phone 919 981 0310 Fax 919 981 0451
 Firm License No. C-1684 www.aogroup.com
 A&O PROJECT NO. 2013.044

REFERENCE NO. 13-15

STRUCTURE NO. 13