

REINFORCING BAR SCHEDULE					
BAR	NO.	SIZE	TYPE	LENGTH	WEIGHT
* A1	192	#5	STR.	41'-2"	8244
A2	192	#5	STR.	41'-2"	8244
* B1	84	#4	STR.	22'-1"	1239
B2	106	#5	STR.	44'-10"	4957
* B3	110	#7	STR.	17'-11"	4028
* S1	66	#4	1	11'-8"	514
* S2	62	#4	1	10'-8"	442
K1	24	#4	STR.	24'-6"	393
K2	6	#4	STR.	9'-4"	37
K3	18	#4	STR.	10'-4"	124
K4	6	#4	STR.	9'-4"	37
K5	6	#4	STR.	8'-10"	35
K6	16	#4	STR.	2'-8"	29
K7	4	#4	STR.	5'-7"	15
K8	12	#4	STR.	6'-1"	49
K9	4	#4	STR.	5'-7"	15
K10	4	#4	STR.	5'-4"	14
U1	66	#4	2	11'-3"	496
U2	12	#4	2	13'-5"	108
H1	32	#5	3	13'-10"	462
H2	32	#5	3	12'-5"	414

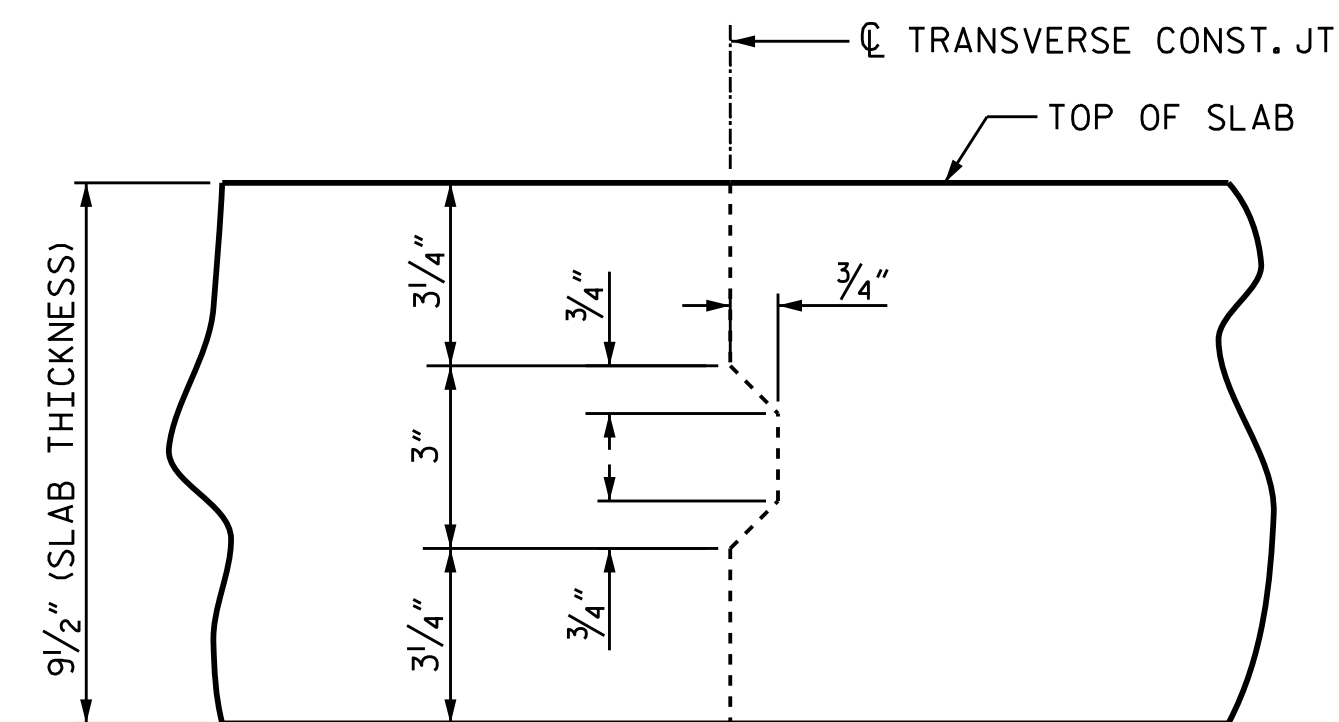
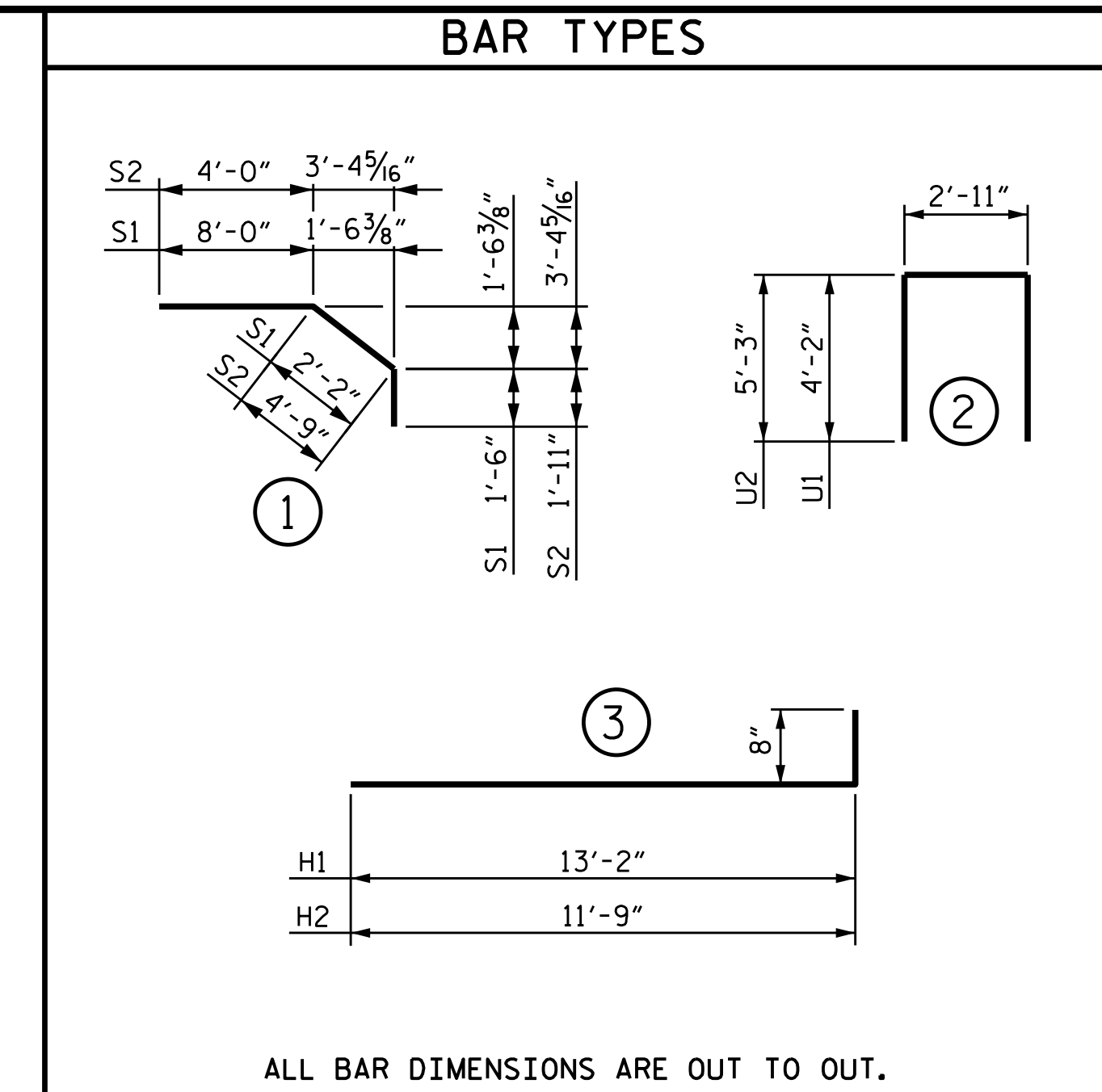
* EPOXY COATED REINFORCING STEEL.

SUPERSTRUCTURE BILL OF MATERIAL			
	CLASS AA CONCRETE (CU. YDS.)	REINFORCING STEEL (LBS.)	EPOXY COATED REINFORCING STEEL (LBS.)
POUR 1	92.3		
POUR 2	73.7		
TOTALS**	166.0	15429	14467

** QUANTITIES FOR BARRIER RAIL ARE NOT INCLUDED.

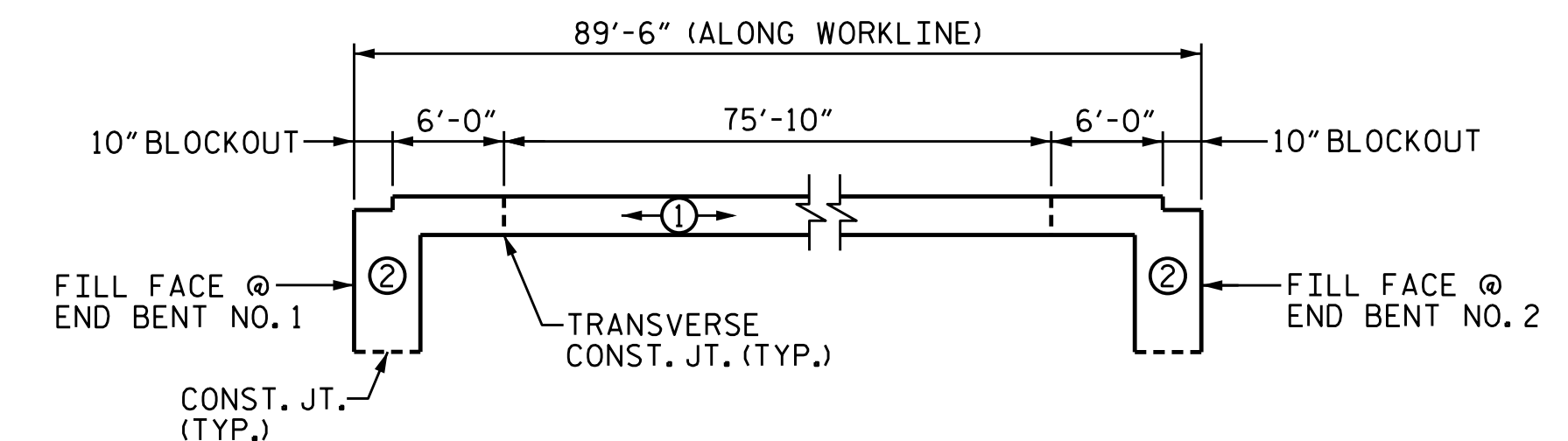
GROOVING BRIDGE FLOORS		
APPROACH SLABS	1739	SO.FT.
BRIDGE DECK	3084	SO.FT.
TOTAL	4823	SO.FT.

SUPERSTRUCTURE REINFORCING STEEL LENGTHS ARE BASED ON THE FOLLOWING MINIMUM SPLICE LENGTHS					
BAR SIZE	SUPERSTRUCTURE EXCEPT APPROACH SLABS, PARAPET, AND BARRIER RAIL		APPROACH SLABS		PARAPET AND BARRIER RAIL
	EPOXY COATED	UNCOATED	EPOXY COATED	UNCOATED	
#4	2'-0"	1'-9"	2'-0"	1'-9"	2'-9"
#5	2'-6"	2'-2"	2'-6"	2'-2"	3'-5"
#6	3'-0"	2'-7"	3'-10"	2'-7"	4'-4"
#7	5'-3"	3'-6"			
#8	6'-10"	4'-7"			



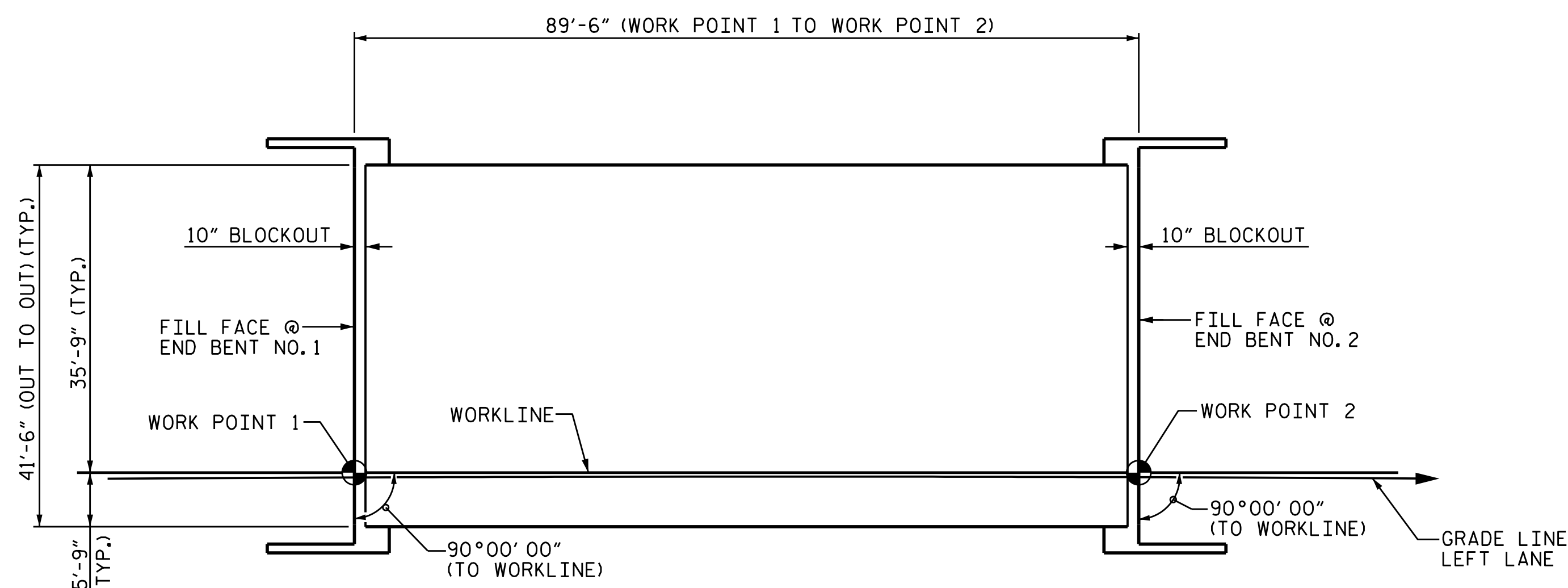
TRANSVERSE CONSTRUCTION JOINT IN DECK SLAB

REINFORCING STEEL IN SLAB NOT SHOWN. LONGITUDINAL REINFORCING STEEL SHALL BE CONTINUOUS THROUGH JOINT.



POUR SEQUENCE

① INDICATES POUR NUMBER AND DIRECTION OF POUR.
(POUR #2 CANNOT BE STARTED UNTIL POUR #1 HAS REACHED A MINIMUM OF 3,000 PSI.)



PLAN

LAYOUT FOR COMPUTING AREA OF REINFORCED CONCRETE DECK SLAB. (SQ. FT. = 3714)

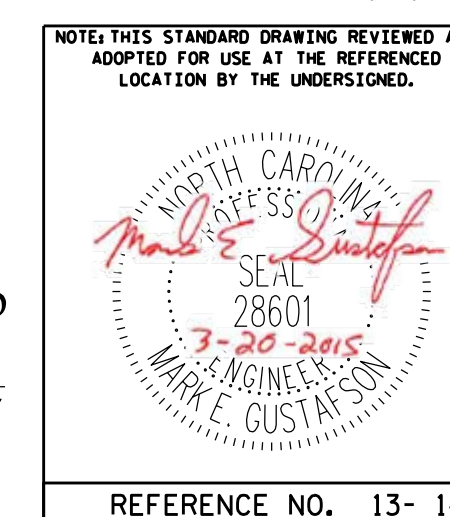
DRAWN BY :	JD GOODIN	DATE :	5/16/14
CHECKED BY :	MEG / HMS	DATE :	6/23/14
QC / QA BY :	TG ZEBLO	DATE :	7/7/14
DRAWN BY :	JMB 5/87	REV. 8/16/99	RWW/LES
CHECKED BY :	SJD 9/87	REV. 5/1/06	TLA/GM
		REV. 10/1/11	MAA/GM

PLAN PREPARED BY:



ALPHA & OMEGA GROUP
CIVIL & STRUCTURAL ENGINEERS
4601 Lake Boone Trail, Ste. 3C Raleigh, NC 27607
Phone 919 981 0310 Fax 919 981 0451
Firm License No. C-1684 www.aogroup.com
A&O PROJECT NO. 2013.044

DocuSigned by:
Mark Gustafson
9E00EDB87408456...
3/23/2015



PROJECT NO. R-2514D
JONES COUNTY
STATION: 561+15.20 -L-
=17+04.80 -Y7-

STATE OF NORTH CAROLINA DEPARTMENT OF TRANSPORTATION RALEIGH					
STANDARD SUPERSTRUCTURE BILL OF MATERIAL LEFT LANE					
REVISIONS					SHEET NO.
NO.	BY:	DATE:	NO.	BY:	DATE:
1			3		
2			4		
					TOTAL SHEETS
					21

STRUCTURE NO. 13 STD. NO. BOM1