

**NOTES**

THE GUARDRAIL ANCHOR ASSEMBLY SHALL CONSIST OF A 1/4" HOLD-DOWN PLATE AND 4 - 1/8" Ø BOLTS WITH NUTS AND WASHERS, RUBRAIL, AND ADHESIVELY ANCHORED BOLTS.

THE HOLD-DOWN PLATE SHALL CONFORM TO AASHTO M270 GRADE 36. AFTER FABRICATION, THE HOLD-DOWN PLATE SHALL BE HOT-DIP GALVANIZED IN ACCORDANCE WITH AASHTO M111.

BOLTS SHALL CONFORM TO THE REQUIREMENTS OF ASTM A307 AND NUTS SHALL CONFORM TO THE REQUIREMENTS OF AASHTO M291. BOLTS, NUTS AND WASHERS SHALL BE GALVANIZED. (AT THE CONTRACTOR'S OPTION, STAINLESS STEEL BOLTS, NUTS AND WASHERS MAY BE USED AS AN ALTERNATE FOR THE 1/8" Ø GALVANIZED BOLTS, NUTS AND WASHERS. THEY SHALL CONFORM TO OR EXCEED THE MECHANICAL REQUIREMENTS OF ASTM A307. THE USE OF THIS ALTERNATE SHALL BE APPROVED BY THE ENGINEER.)

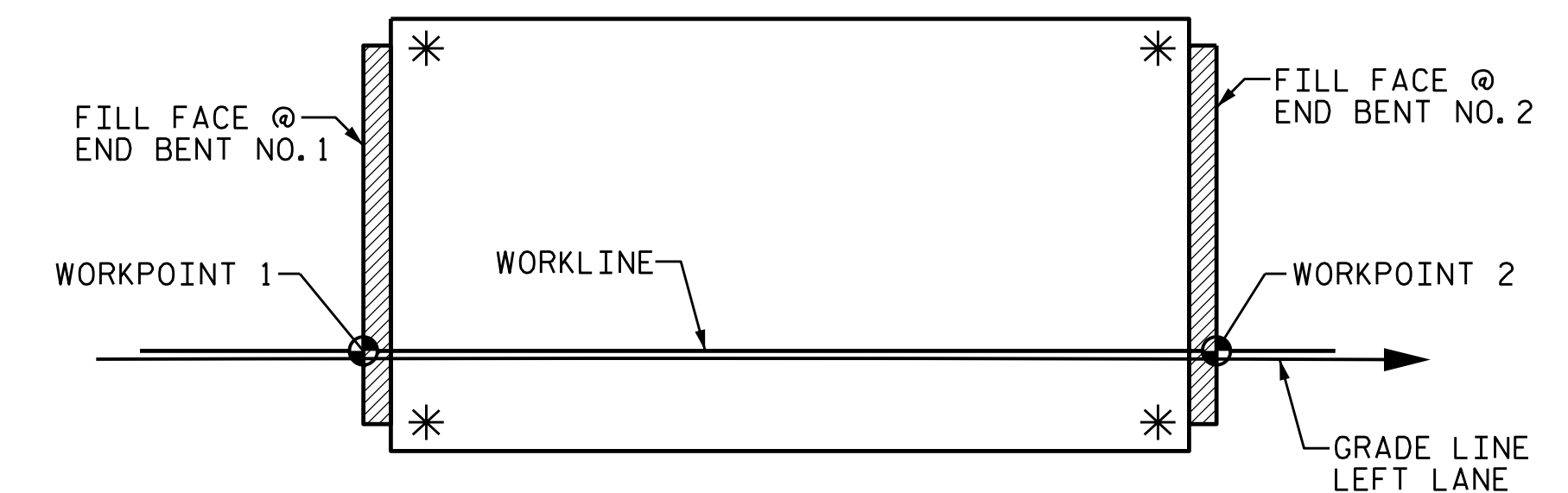
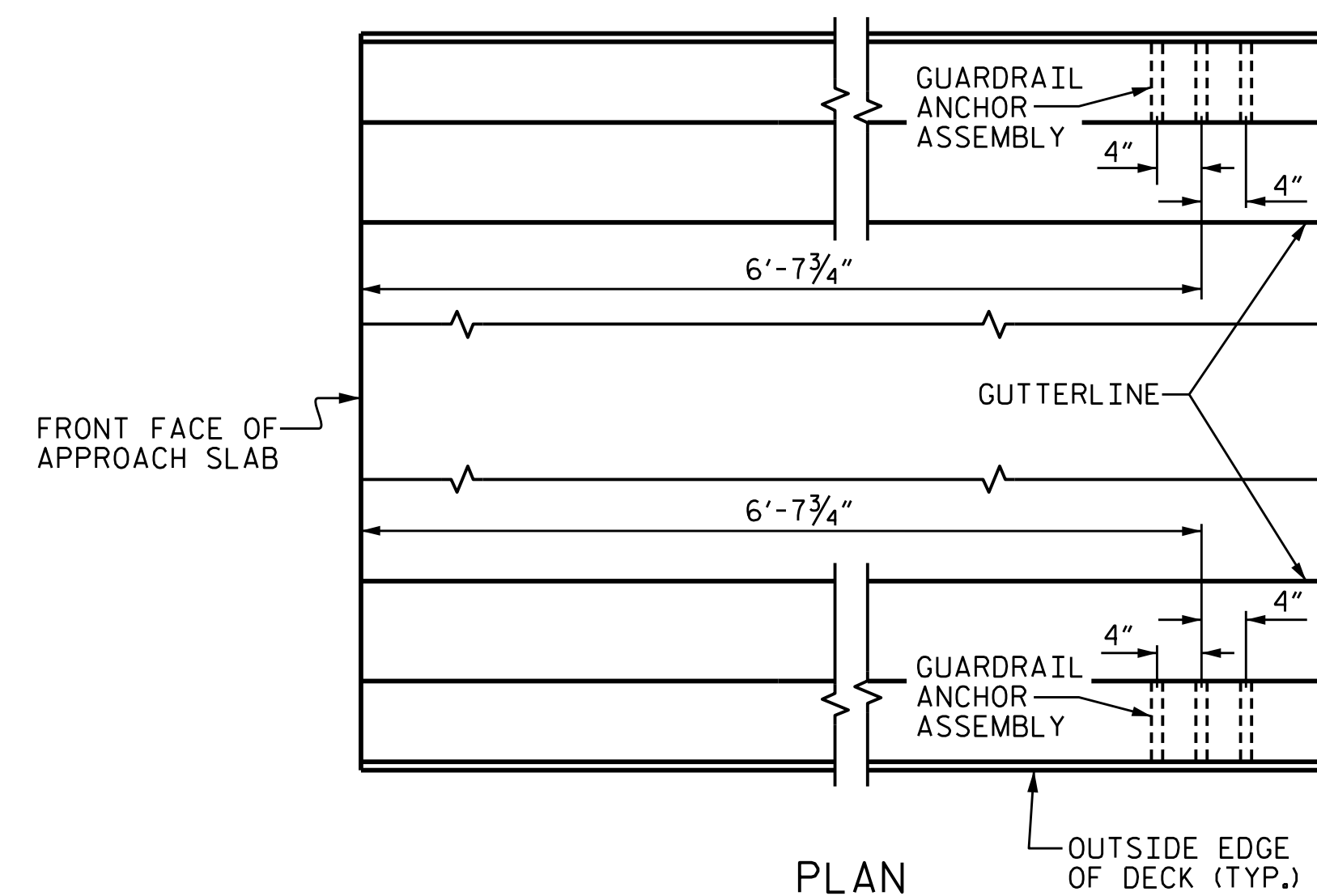
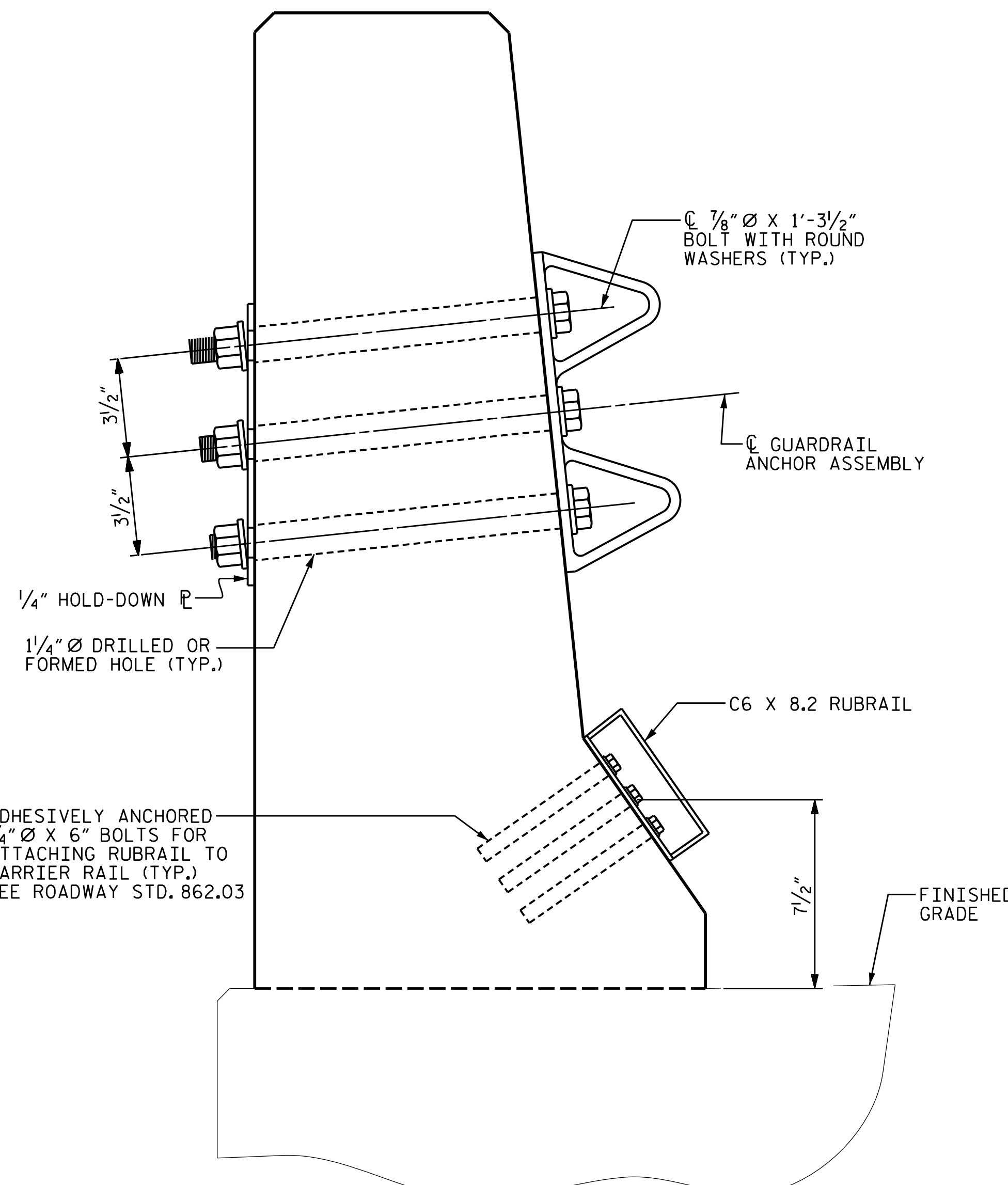
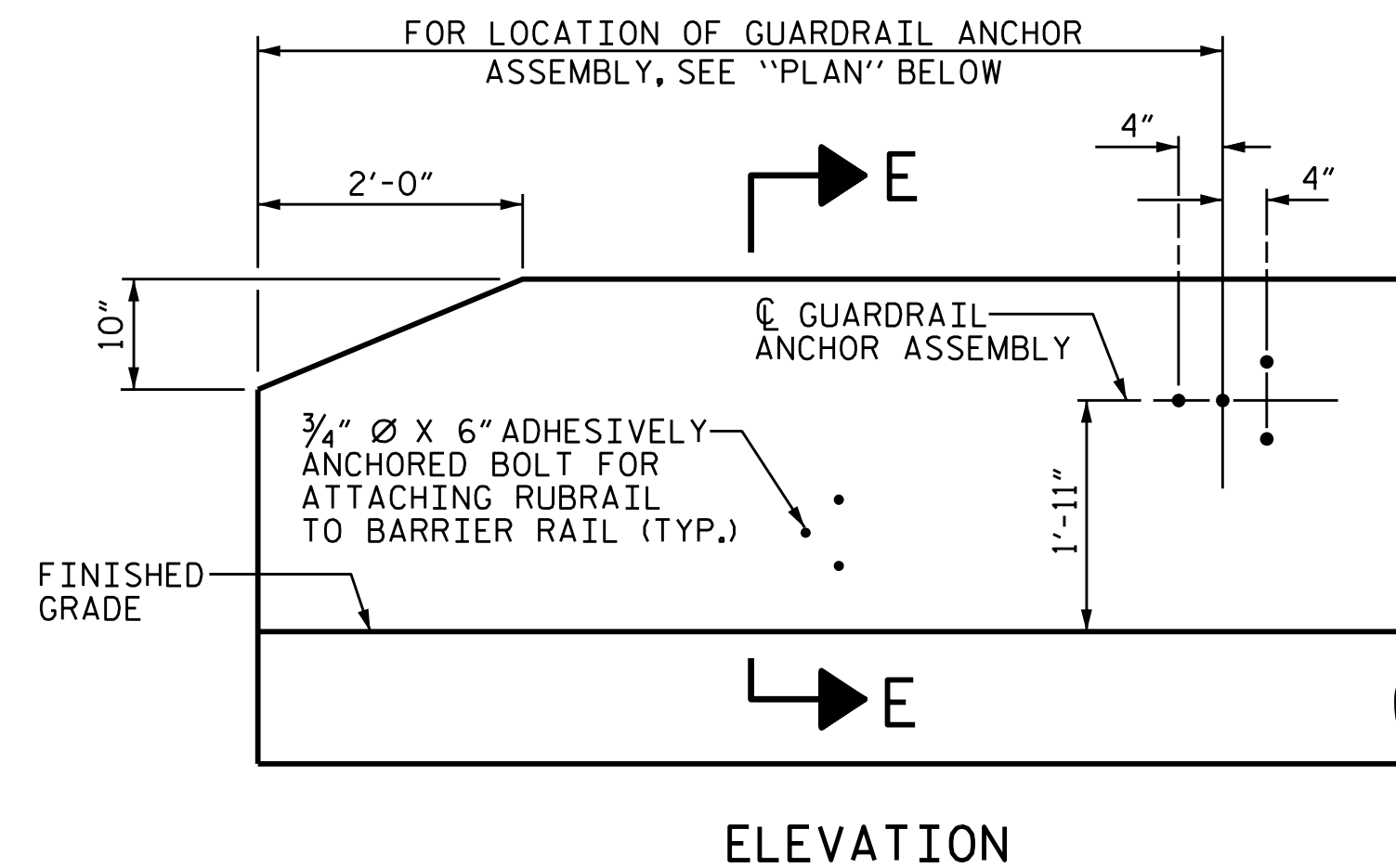
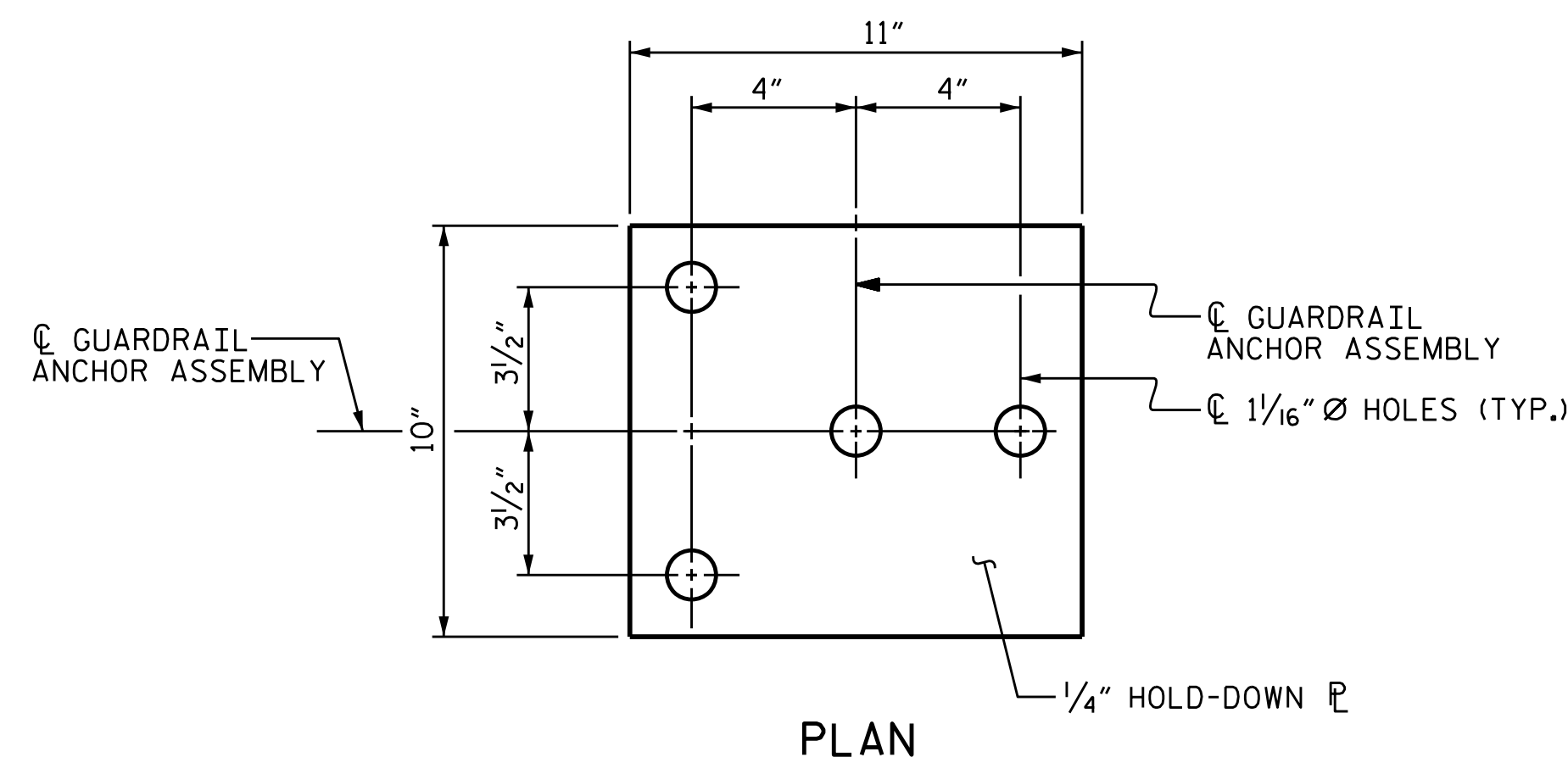
THE GUARDRAIL ANCHOR ASSEMBLY IS REQUIRED AT ALL POINTS WHERE APPROACH GUARDRAIL IS TO BE ATTACHED TO THE END OF BARRIER RAIL. FOR POINTS OF ATTACHMENT, SEE SKETCH.

AFTER INSTALLATION, THE EXPOSED THREAD OF THE BOLT SHALL BE BURRED WITH A SHARP POINTED TOOL.

THE COST OF THE GUARDRAIL ANCHOR ASSEMBLY SHALL BE INCLUDED IN THE UNIT CONTRACT PRICE BID FOR CONCRETE BARRIER RAIL.

THE 1/4" Ø HOLES SHALL BE FORMED OR DRILLED WITH A CORE BIT. IMPACT TOOLS WILL NOT BE PERMITTED. ANY CONCRETE DAMAGED BY THIS WORK SHALL BE REPAIRED TO THE SATISFACTION OF THE ENGINEER.

THE C6 X 8.2 RUBRAIL IS TO BE ADHESIVELY ANCHORED TO THE RAIL USING THREE 3/4" Ø X 6" BOLTS WITH WASHERS. LEVEL ONE FIELD TESTING IS REQUIRED, AND THE YIELD LOAD OF THE 3/4" Ø BOLT IS 12 KIPS. FOR ADHESIVELY ANCHORED ANCHOR BOLTS OR DOWELS, SEE STANDARD SPECIFICATIONS. SEE ROADWAY STANDARD 862.03 FOR DETAILS AND LOCATION OF THE RUBRAIL.



**LOCATION OF ANCHORS FOR GUARDRAIL**

END BENT NO. 1 SHOWN, END BENT NO. 2 SIMILAR

**GUARDRAIL ANCHOR ASSEMBLY DETAILS**

**SKETCH SHOWING POINTS OF ATTACHMENTS**

DETAILS GUARDRAIL ANCHOR ASSEMBLY TYPE B-77

PROJECT NO. R-2514D  
JONES COUNTY  
 STATION: 561+15.20 -L-  
=17+04.80 -Y7-

DocuSigned by:  
*Mark Gustafson*  
 9E00EDB87408456...  
 3/23/2015

NOTE: THIS STANDARD DRAWING REVIEWED AND ADOPTED FOR USE AT THE REFERENCED LOCATION BY THE UNDERSIGNED.  
  
 REFERENCE NO. 13-13

STATE OF NORTH CAROLINA DEPARTMENT OF TRANSPORTATION RALEIGH					
<b>STANDARD GUARDRAIL ANCHORAGE FOR BARRIER RAIL LEFT LANE</b>					
REVISIONS					
NO.	BY:	DATE:	NO.	BY:	DATE:
1			3		
2			4		
					SHEET NO. <b>S13-13</b> TOTAL SHEETS <b>21</b>

PLAN PREPARED BY:



**ALPHA & OMEGA GROUP**  
 CIVIL & STRUCTURAL ENGINEERS  
 4601 Lake Boone Trail, Ste. 3C Raleigh, NC 27607  
 Phone 919 981 0310 Fax 919 981 0451  
 Firm License No. C-1684 www.aogroup.com  
 A&O PROJECT NO. 2013.044

DRAWN BY : <u>JD GOODIN</u>	DATE : <u>5/16/14</u>
CHECKED BY : <u>MEG / HMS</u>	DATE : <u>6/23/14</u>
QC / QA BY : <u>TG ZEBLO</u>	DATE : <u>7/7/14</u>
DRAWN BY : <u>TLA 5/06</u>	ADDED 5/1/06RR KMM/GM
CHECKED BY : <u>GM 5/06</u>	REV. 10/1/11 MAA/GM
	REV. 7/12 MAA/GM

STRUCTURE NO. 13

STD. NO. GRA2