

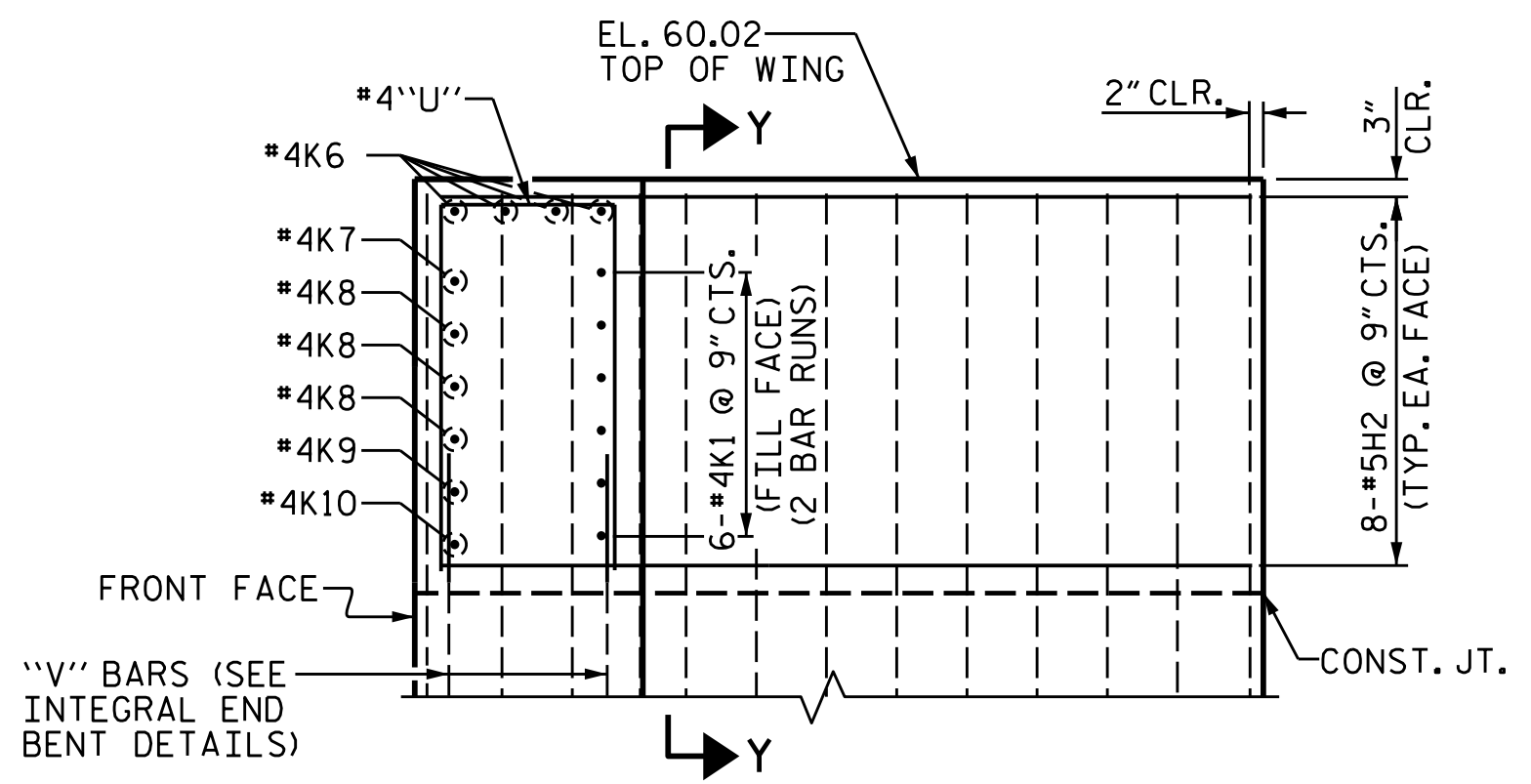
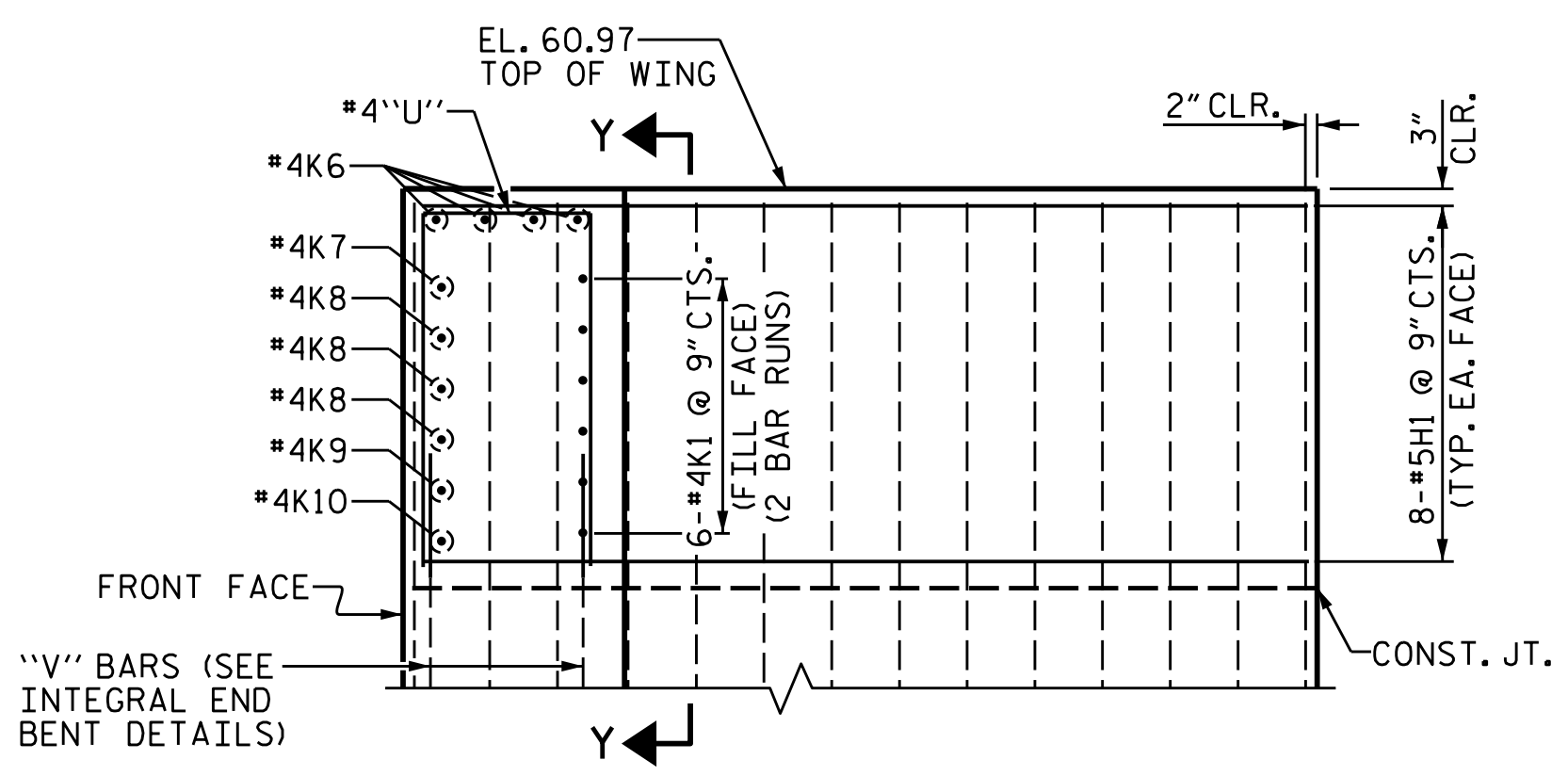
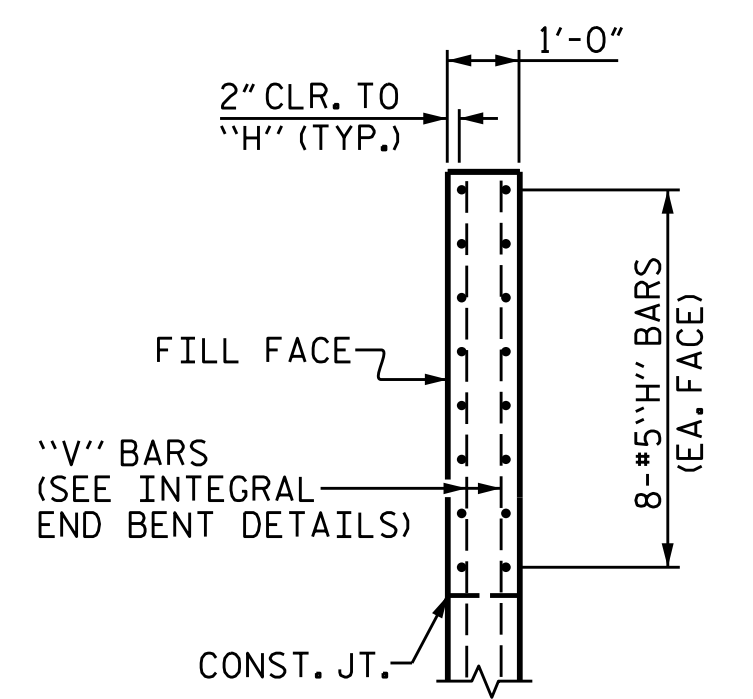
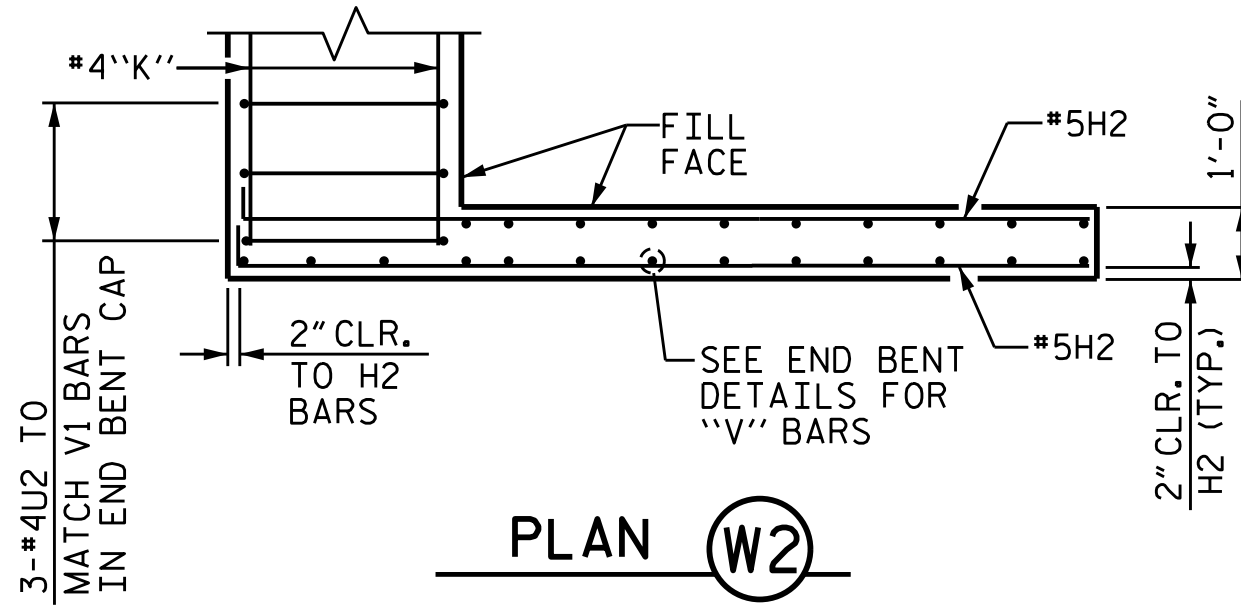
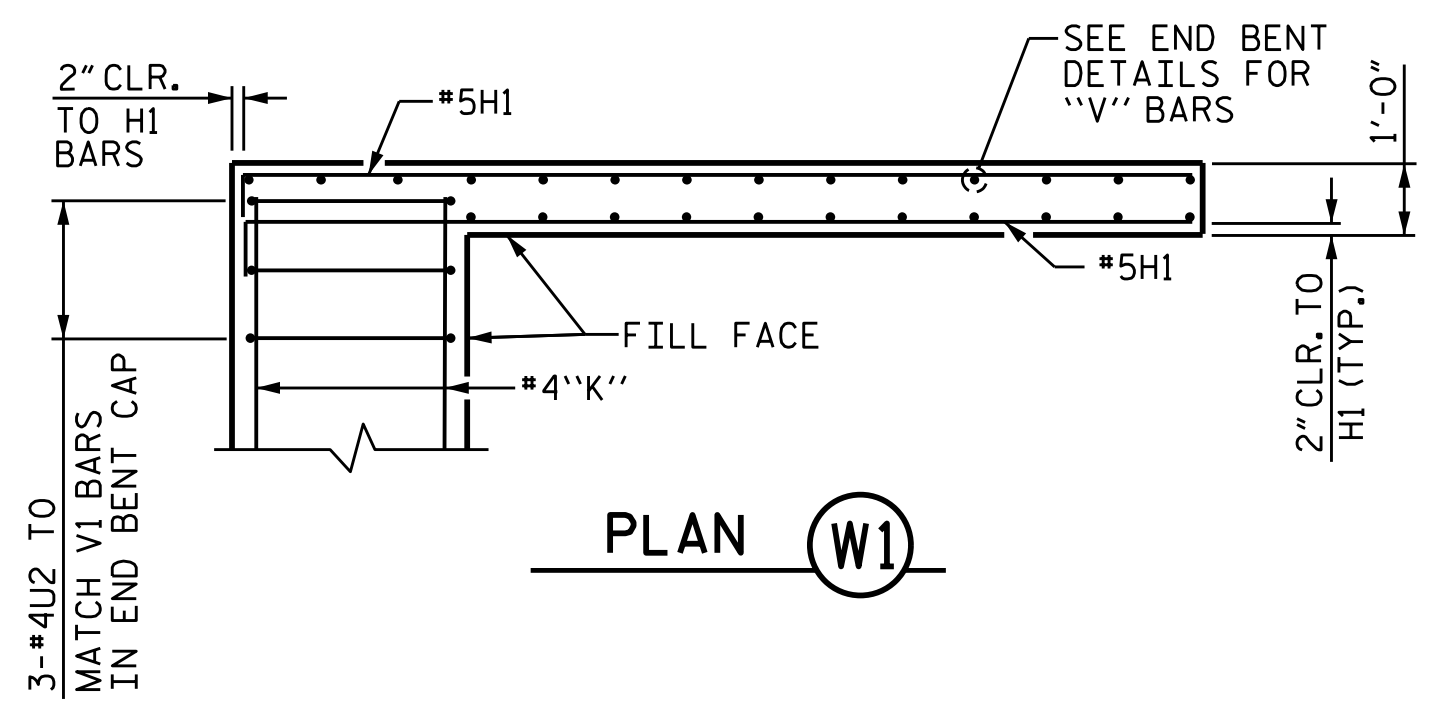
SECTION "X-X"

ELEVATION (W1)

ELEVATION (W2)

END BENT NO. 1

(FOR WING DIMENSIONS SEE SUBSTRUCTURE END BENT NO. 1)



SECTION "Y-Y"

ELEVATION (W1)

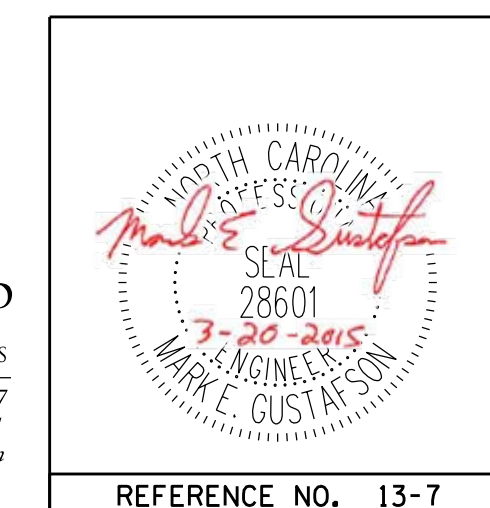
ELEVATION (W2)

END BENT NO. 2

(FOR WING DIMENSIONS SEE SUBSTRUCTURE END BENT NO. 2)

PROJECT NO. R-2514D
 JONES COUNTY
 STATION: 561+15.20 -L-
 =17+04.80 -Y7-

DocuSigned by:
 Mark Gustafson
 9E00EDB87408456...
 3/23/2015



PLAN PREPARED BY:

 ALPHA & OMEGA GROUP
 CIVIL & STRUCTURAL ENGINEERS
 4601 Lake Boone Trail, Ste. 3C Raleigh, NC 27607
 Phone 919 981 0310 Fax 919 981 0451
 Firm License No. C-1684 www.aogroup.com
 A&O PROJECT NO. 2013.044

STATE OF NORTH CAROLINA DEPARTMENT OF TRANSPORTATION RALEIGH					
SUPERSTRUCTURE PLAN OF SPAN DETAILS TOP OF WINGS END BENT NO. 1 & END BENT NO. 2 LEFT LANE					
REVISIONS					
NO.	BY:	DATE:	NO.	BY:	DATE:
1			3		
2			4		

DRAWN BY: JD GOODIN DATE: 5/16/14
 CHECKED BY: MEG / HMS DATE: 6/23/14
 QC / QA BY: TG ZEBLO DATE: 7/7/14

SHEET NO.
 S13-7
 TOTAL SHEETS
 21

REFERENCE NO. 13-7

STRUCTURE NO. 13