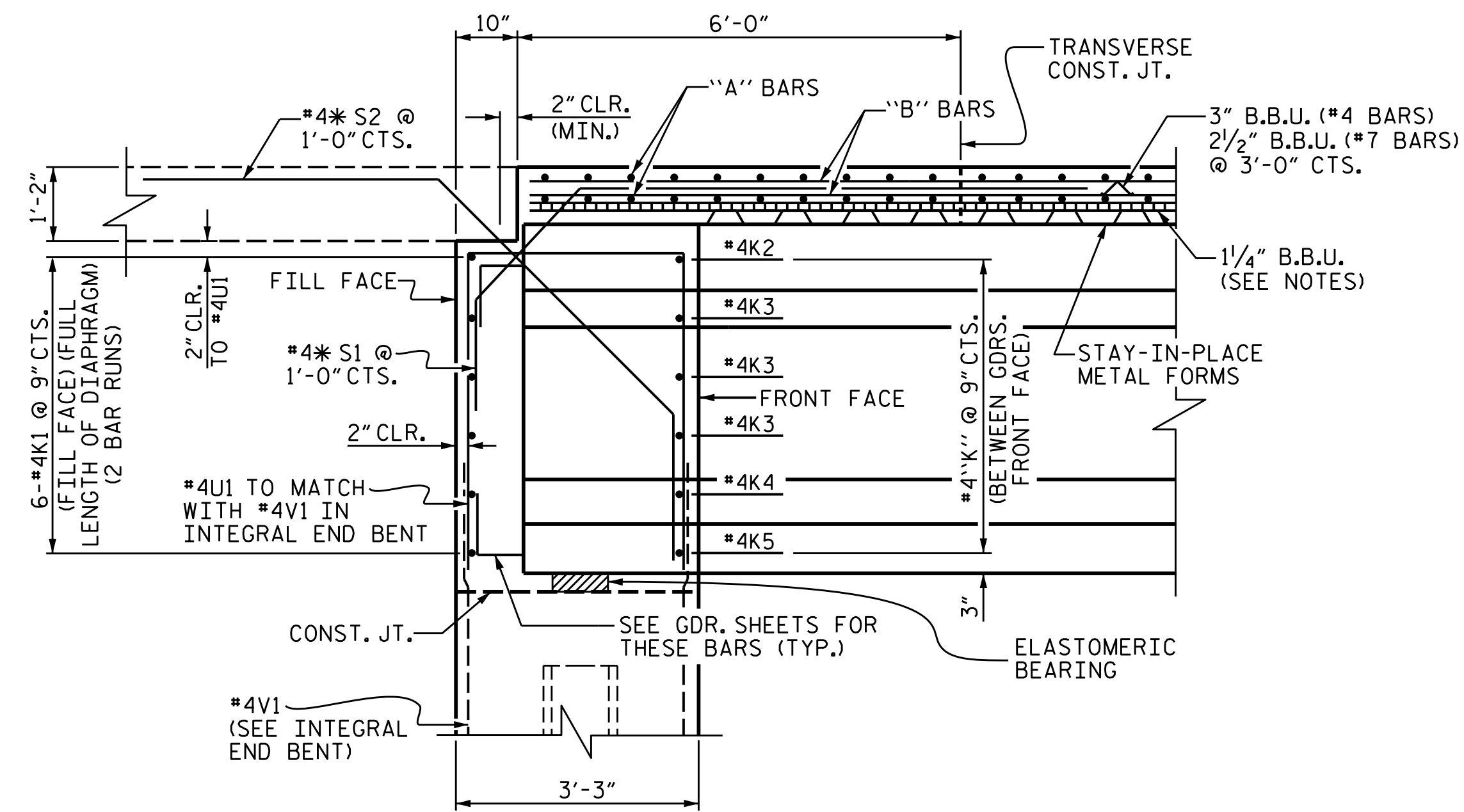
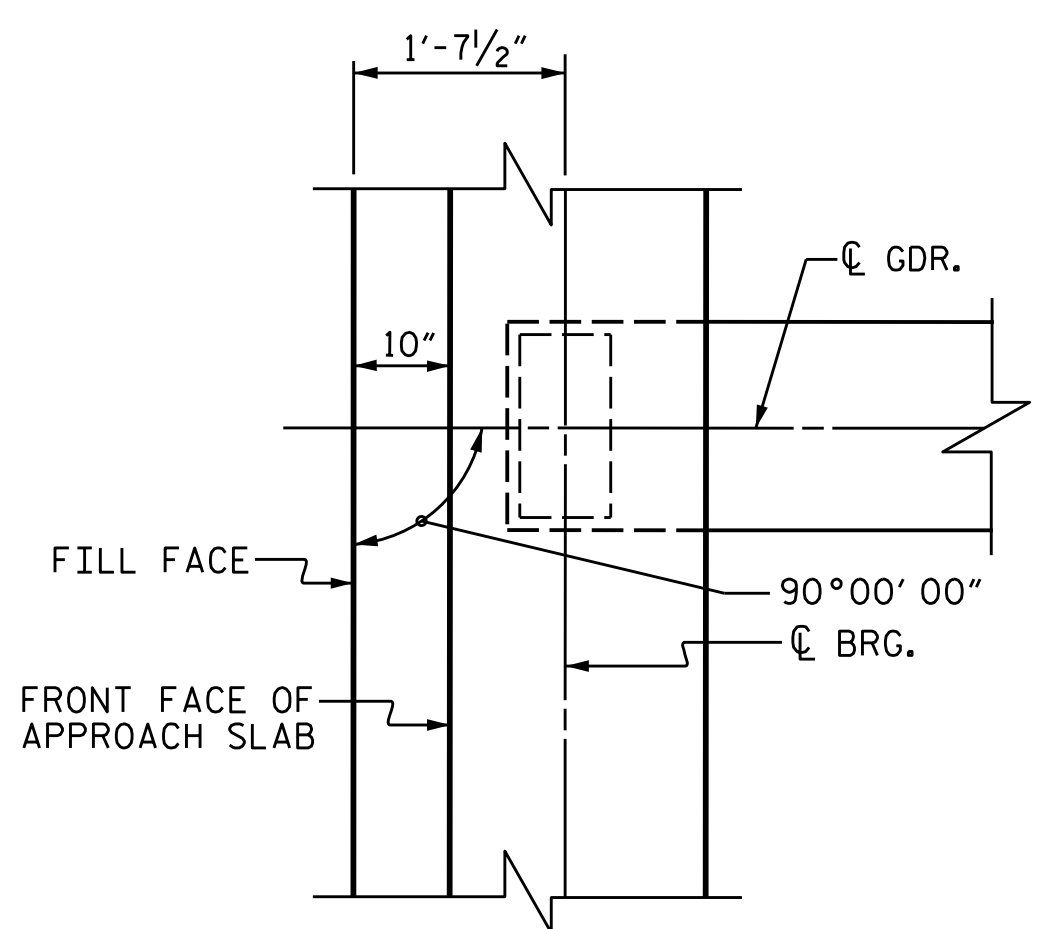


TYPICAL SECTION



SECTION "A-A"



PLAN OF GIRDER AT INTEGRAL END BENT

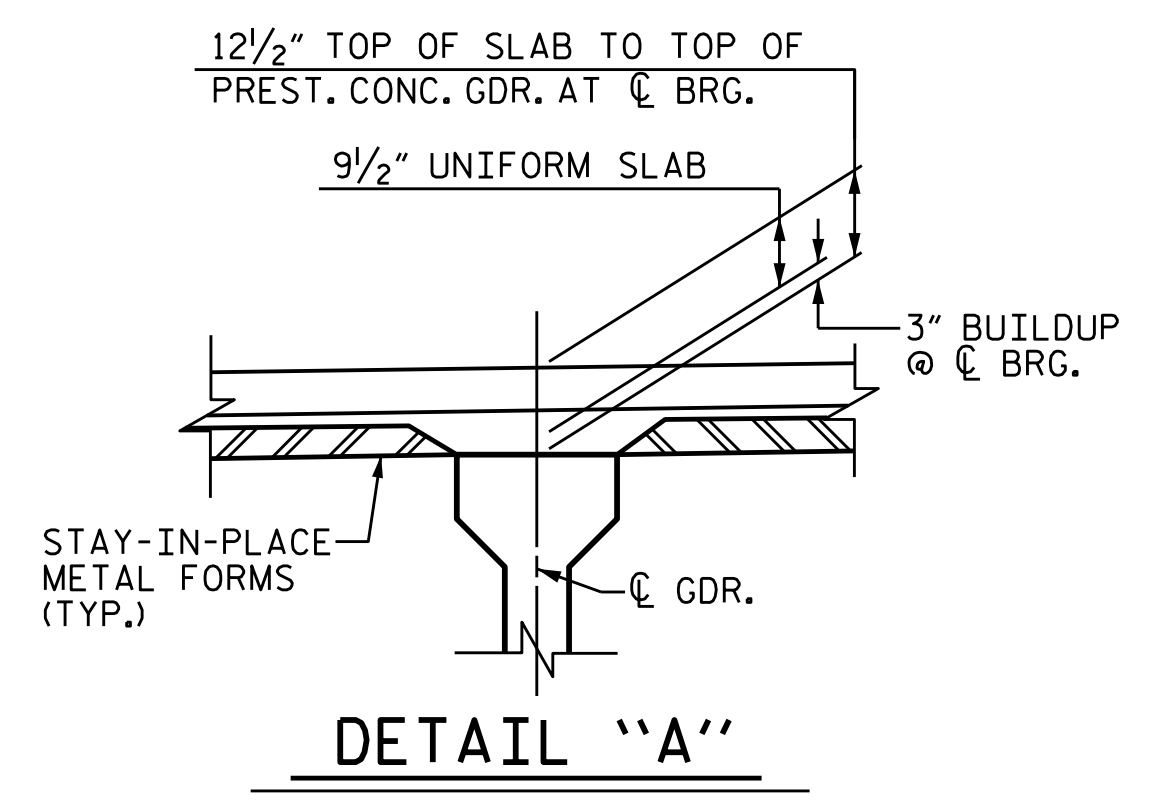
NOTES

PROVIDE 1/4" HIGH BEAM BOLSTERS UPPER @ 4'-0" CTS. ATOP THE METAL STAY-IN-PLACE FORMS TO SUPPORT THE BOTTOM MAT OF "A" BARS. WHEN USING REMOVABLE FORMS, PROVIDE CONTINUOUS HIGH CHAIRS FOR METAL DECK (C.H.C.M.) AT 4'-0" CTS. WITH A HEIGHT TO SUPPORT THE BOTTOM MAT OF "A" BARS A CLEAR DISTANCE OF 2 1/2" ABOVE THE TOP OF THE REMOVABLE FORM.

LONGITUDINAL STEEL MAY BE SHIFTED SLIGHTLY, AS NECESSARY, TO AVOID INTERFERENCE WITH STIRRUPS IN PRESTRESSED CONCRETE GIRDERS.

SEE "SECTION THRU RAIL" ON SHEET 13-12 FOR DRIP GROOVES AND BEAM BOLSTERS IN OVERHANG.

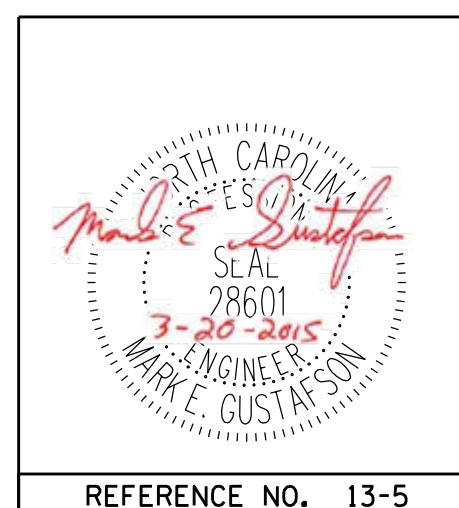
FOR LOCATION OF SECTIONS, SEE "PLAN OF SPAN" SHEET.



DETAIL "A"

PROJECT NO. R-2514D
 JONES COUNTY
 STATION: 561+15.20 -L-
 =17+04.80 -Y7-

DocuSigned by:
 Mark Gustafson
 9E00EDB87408456...
 3/23/2015



PLAN PREPARED BY:

 ALPHA & OMEGA GROUP
 CIVIL & STRUCTURAL ENGINEERS
 4601 Lake Boone Trail, Ste. 3C Raleigh, NC 27607
 Phone 919 981 0310 Fax 919 981 0451
 Firm License No. C-1684 www.aogroup.com
 A&O PROJECT NO. 2013.044

| | | | |
|--|-----|--|--------------------|
| STATE OF NORTH CAROLINA DEPARTMENT OF TRANSPORTATION RALEIGH | | SUPERSTRUCTURE TYPICAL SECTION LEFT LANE | |
| REVISIONS | | | |
| NO. | BY: | DATE: | NO. |
| 1 | | | 3 |
| 2 | | | 4 |
| SHEET NO. S13-5 | | | TOTAL SHEETS 21 |

DRAWN BY: JD GOODIN DATE: 5/16/14
 CHECKED BY: MEG / HMS DATE: 6/23/14
 QC / QA BY: TG ZEBLO DATE: 7/7/14

REFERENCE NO. 13-5

STRUCTURE NO. 13