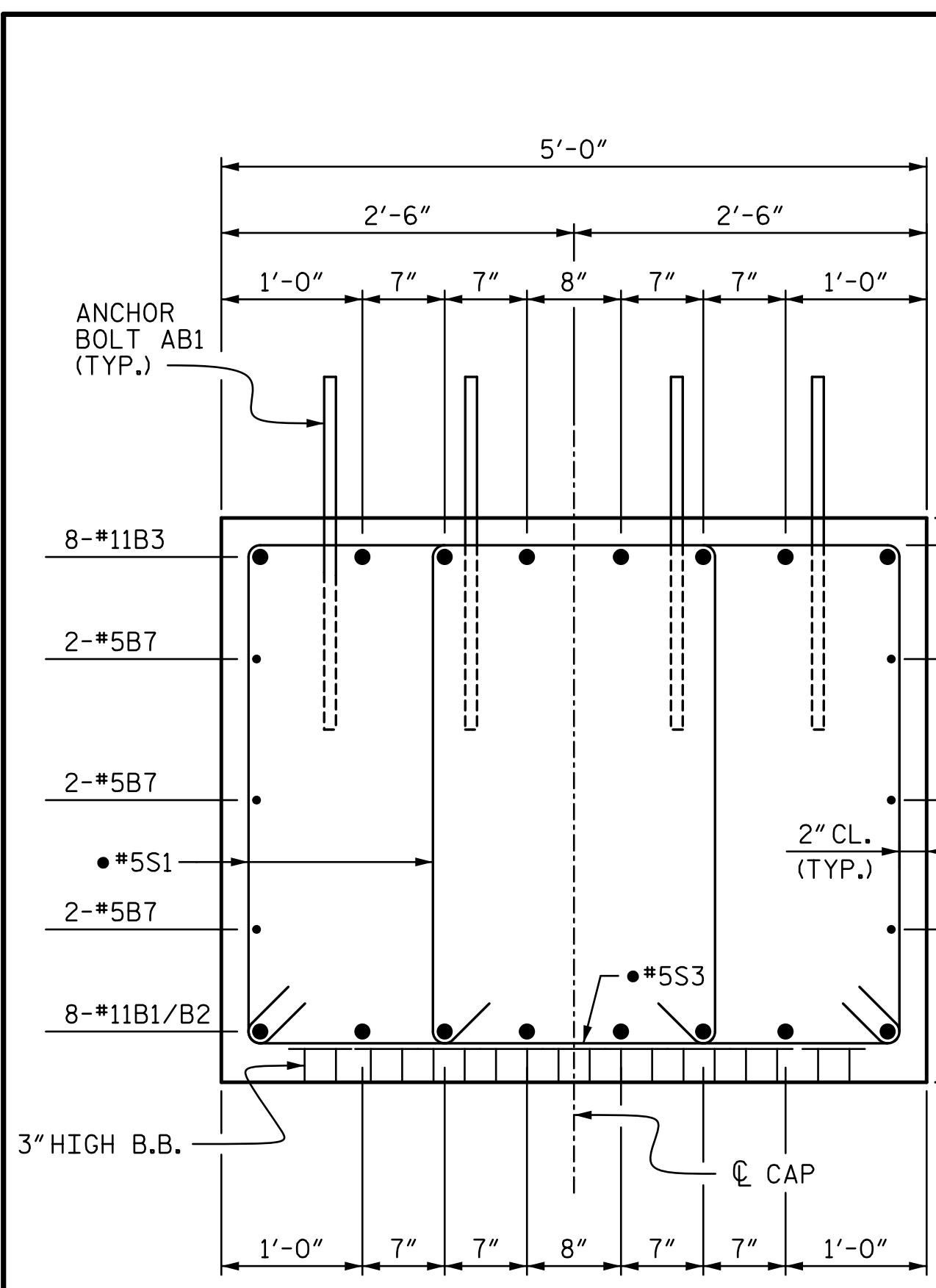
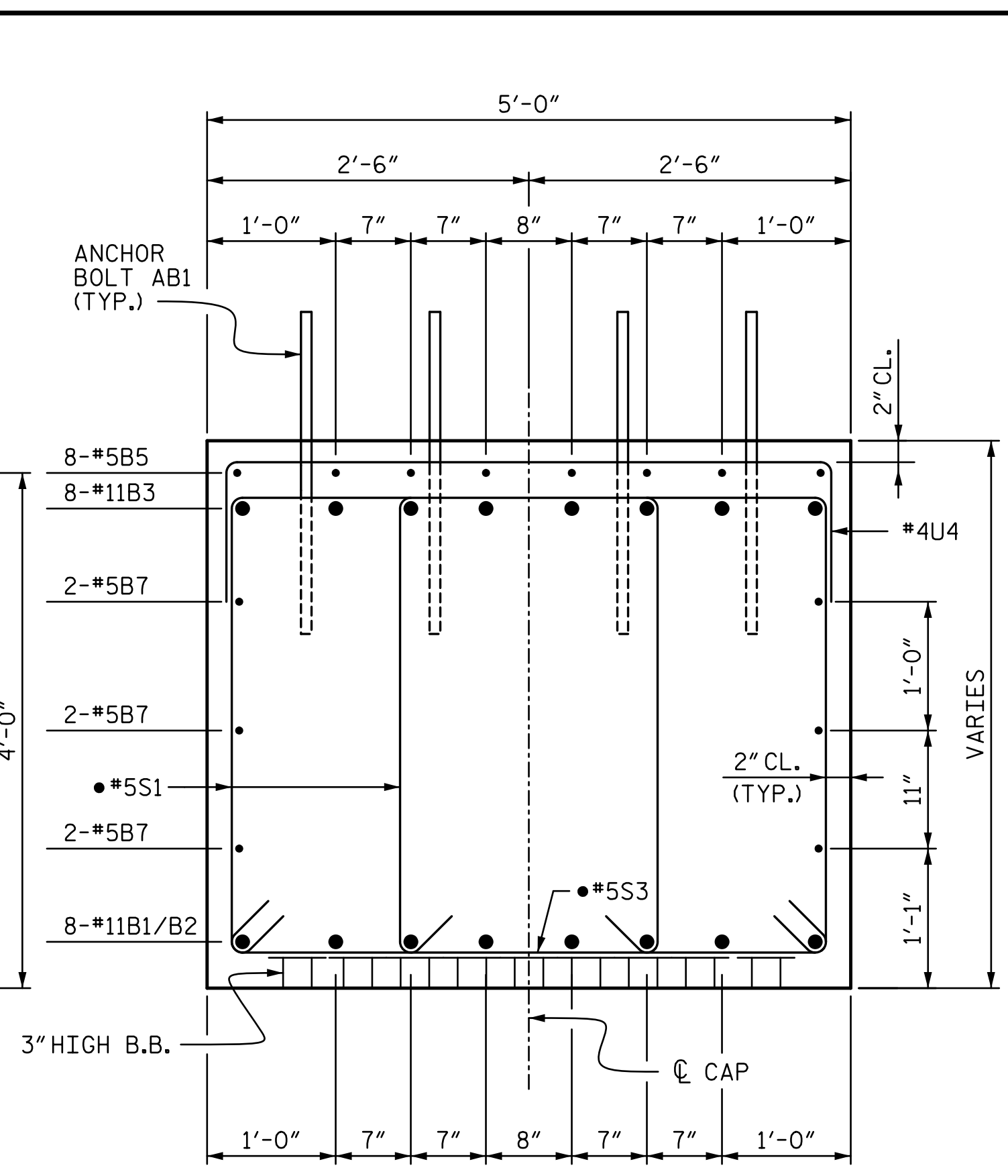


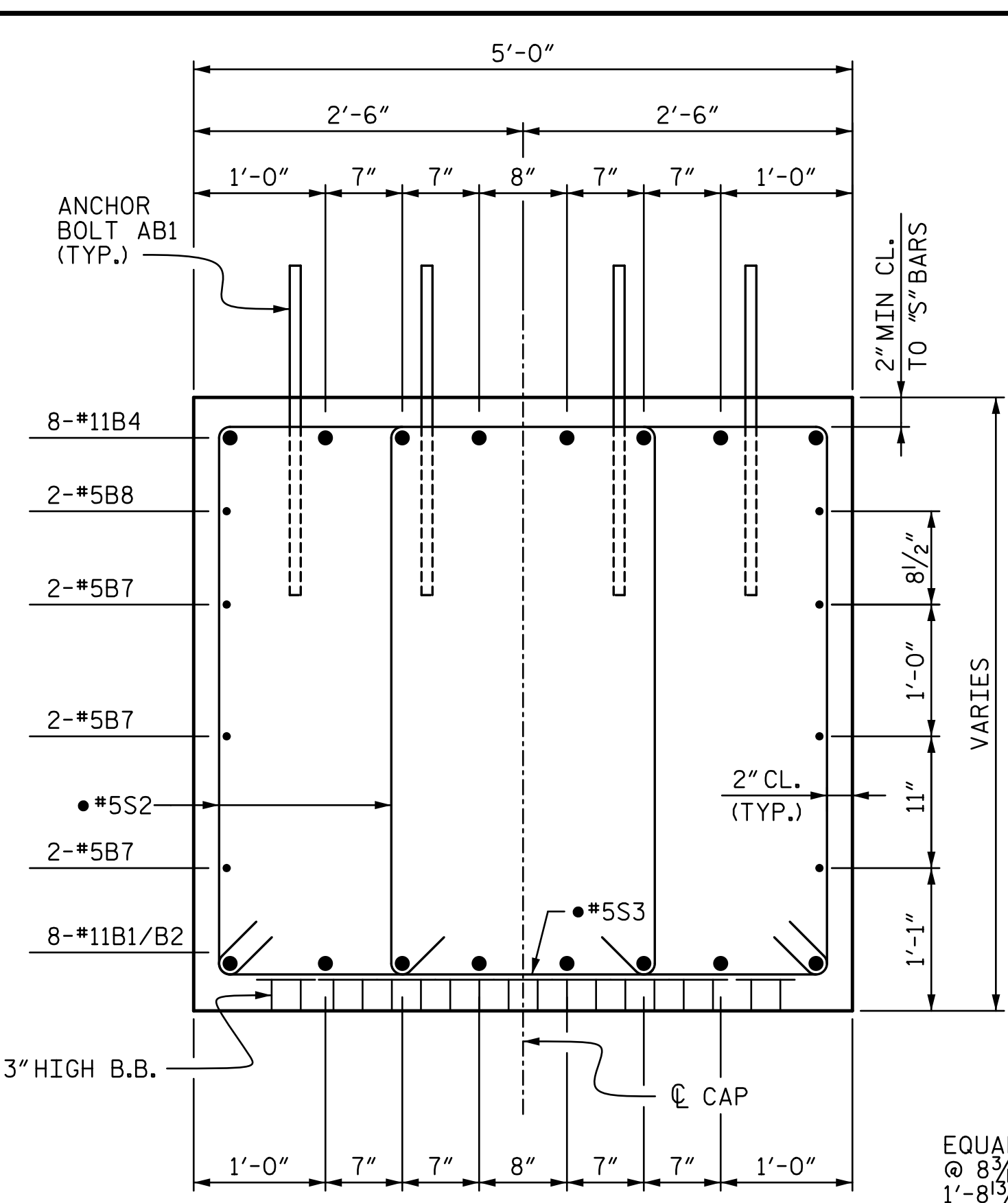
3/6/2015 9:08:45 AM R:\Site 6\usta\Finals\Site 6 RL\412\_028\_R2514D\_SMU\_B202.dgn



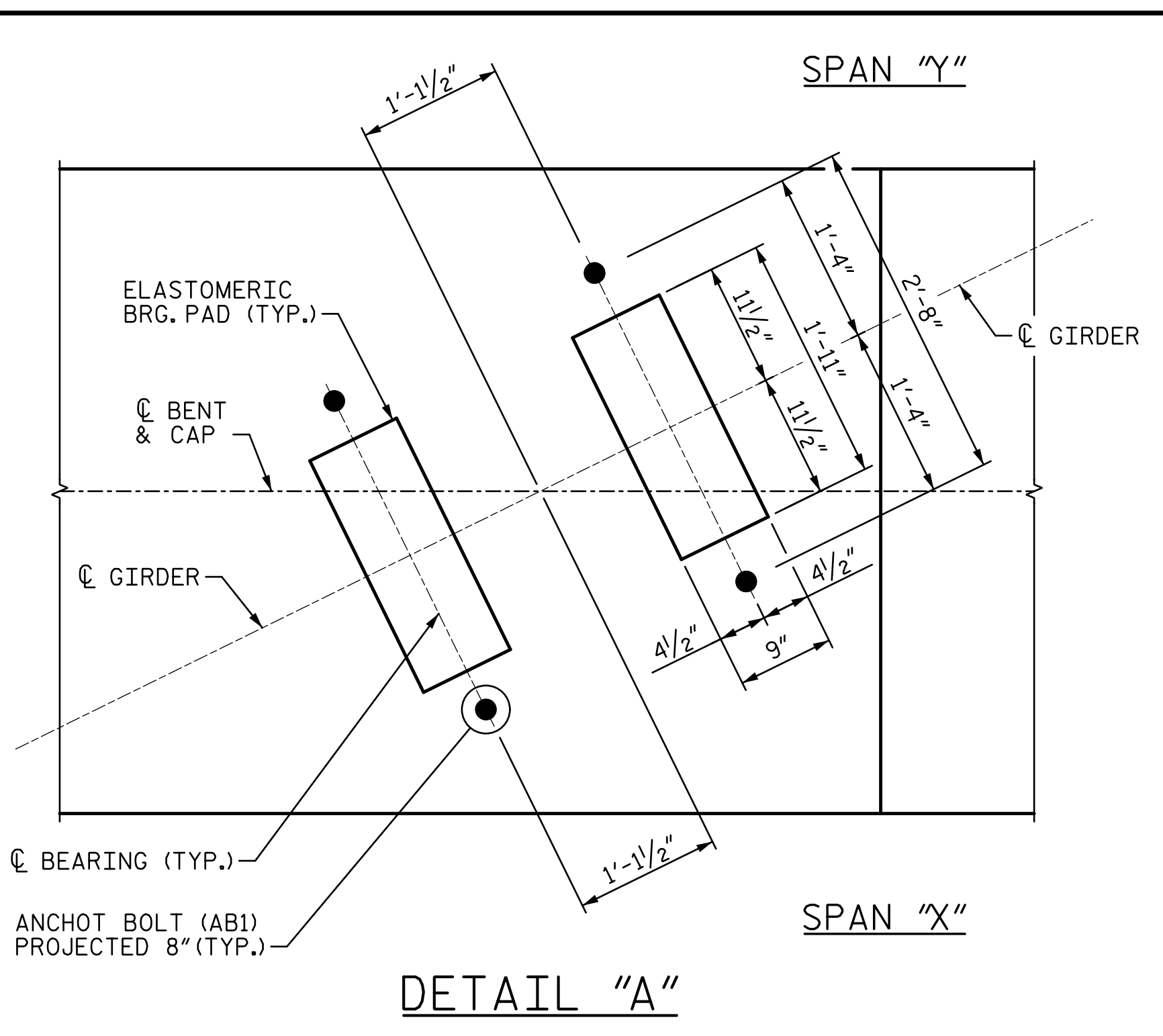
SECTION A-A



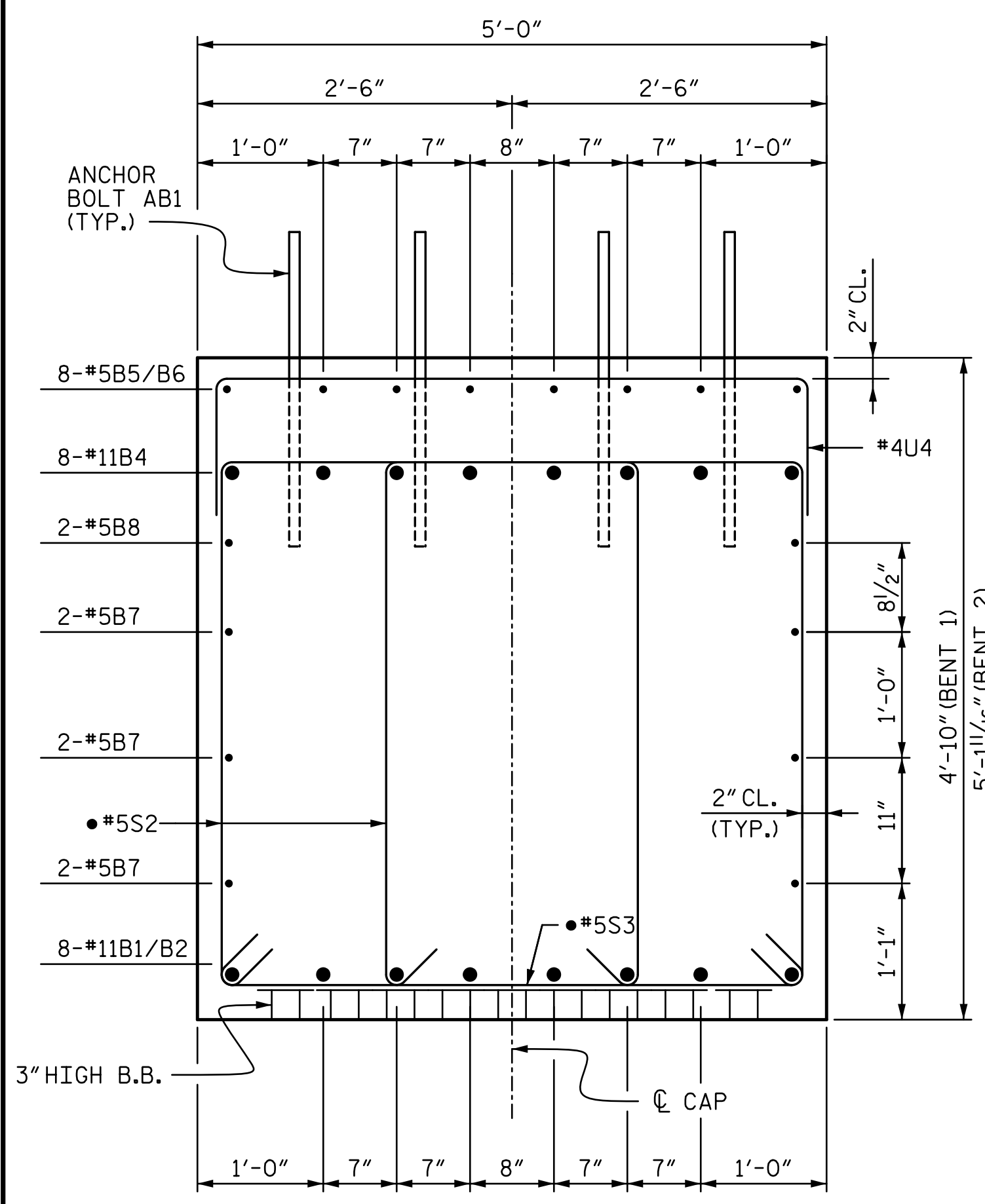
SECTION B-B



SECTION C-C

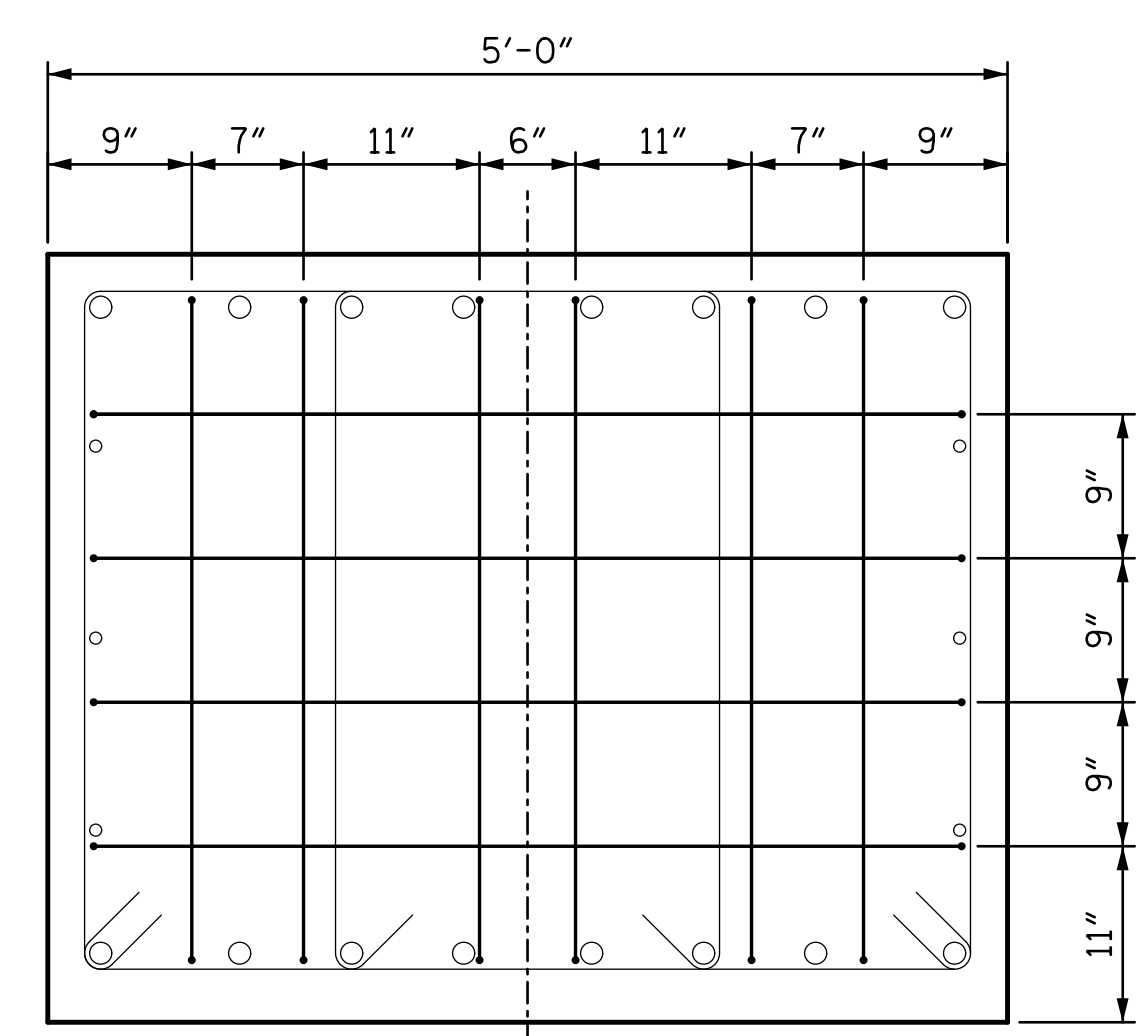


DETAIL "A"

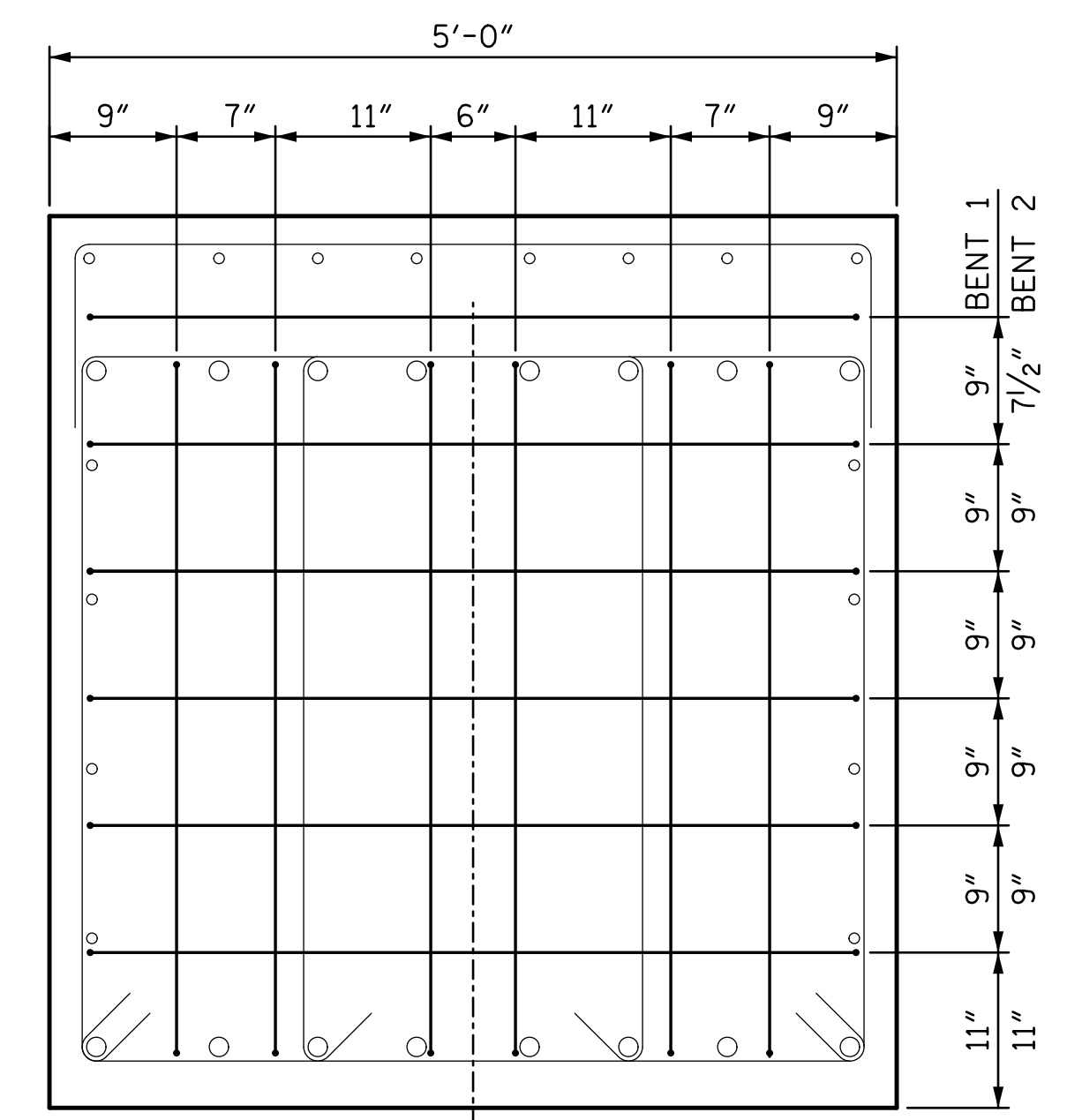


SECTION D-D

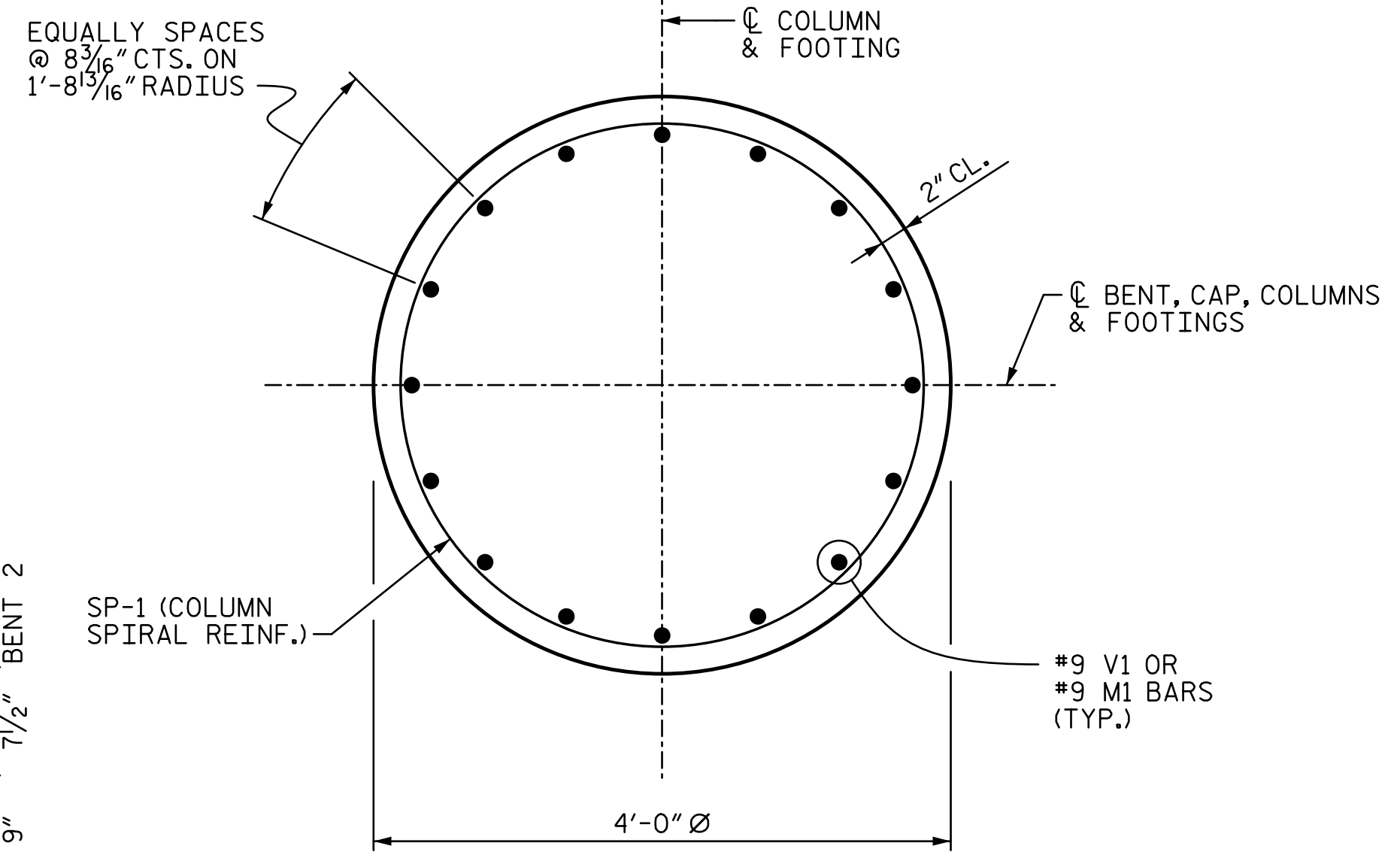
• INVERT ALTERNATE PAIRS OF STIRRUPS AND CAP WITH S3 BAR



VIEW E-E



VIEW F-F



TYPICAL SECTION THROUGH COLUMN

**NOTE:**  
1. FOR "AB1" ANCHOR BOLTS, SEE "ELASTOMERIC BEARING DETAILS" SHEET.



PROJECT NO. R-2514D  
JONES & CRAVEN COUNTY  
 STATION: 526+71.12 -L-  
= 16+08.07 -Y6-  
 SHEET 2 OF 3

STATE OF NORTH CAROLINA  
 DEPARTMENT OF TRANSPORTATION  
 RALEIGH  
 SUBSTRUCTURE  
**BENTS 1 & 2**  
**DETAILS**  
**-RIGHT LANE-**

DRAWN BY: <u>ACA</u>	DATE: <u>5-14</u>	DESIGN ENGINEER OF RECORD: <u>T. TOWNSEND</u>	DATE: <u>6-14</u>
CHECKED BY: <u>TJT</u>	DATE: <u>6-14</u>		

STV / Ralph Whitehead Associates, Inc.  
 900 West Trade Street, Suite 715  
 Charlotte, NC 28202  
 NC License Number F-0991

REVISIONS				SHEET NO.	
NO.	BY:	DATE:	NO.	BY:	DATE:
1			3		
2			4		

TOTAL SHEETS: 38