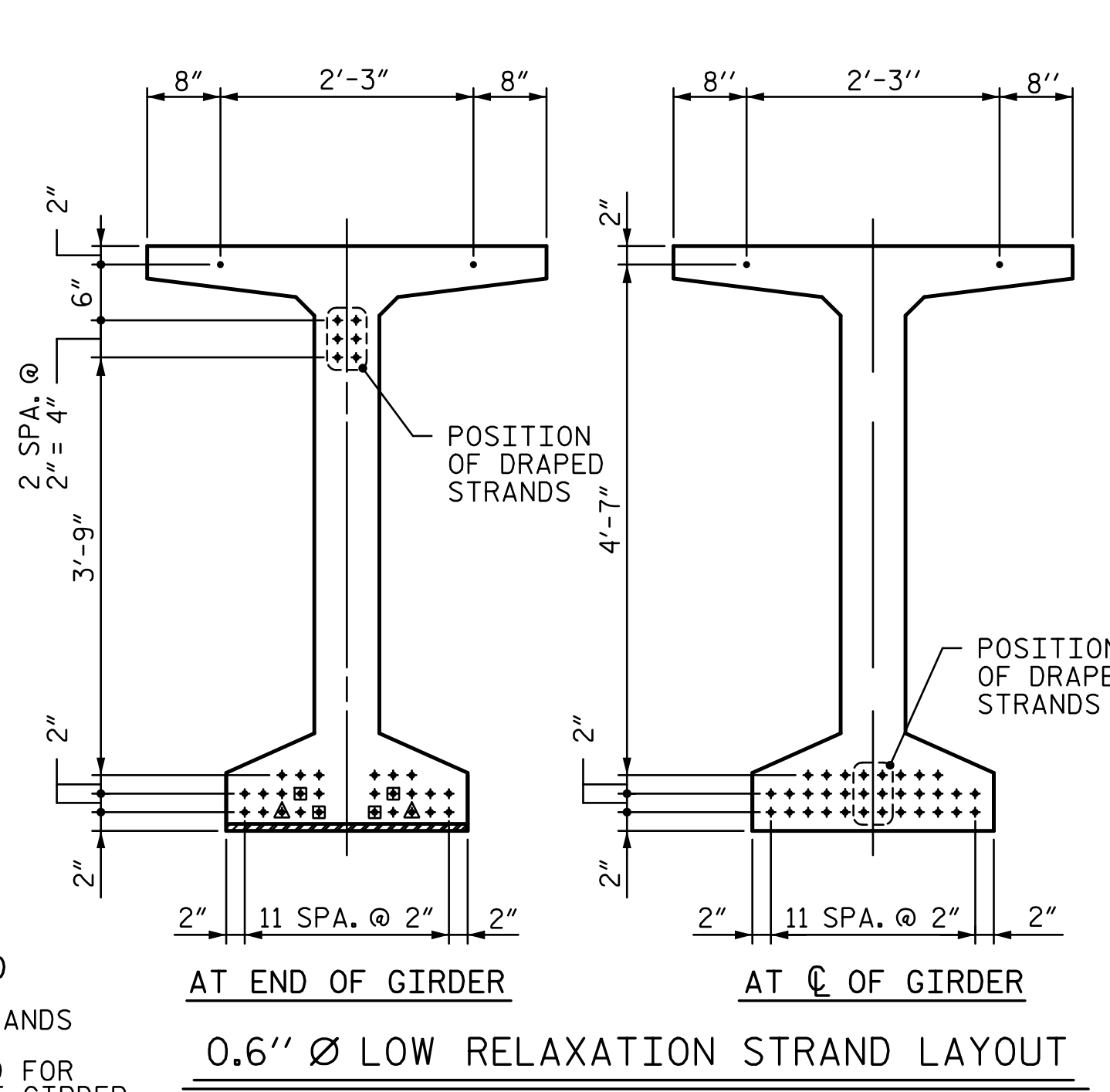
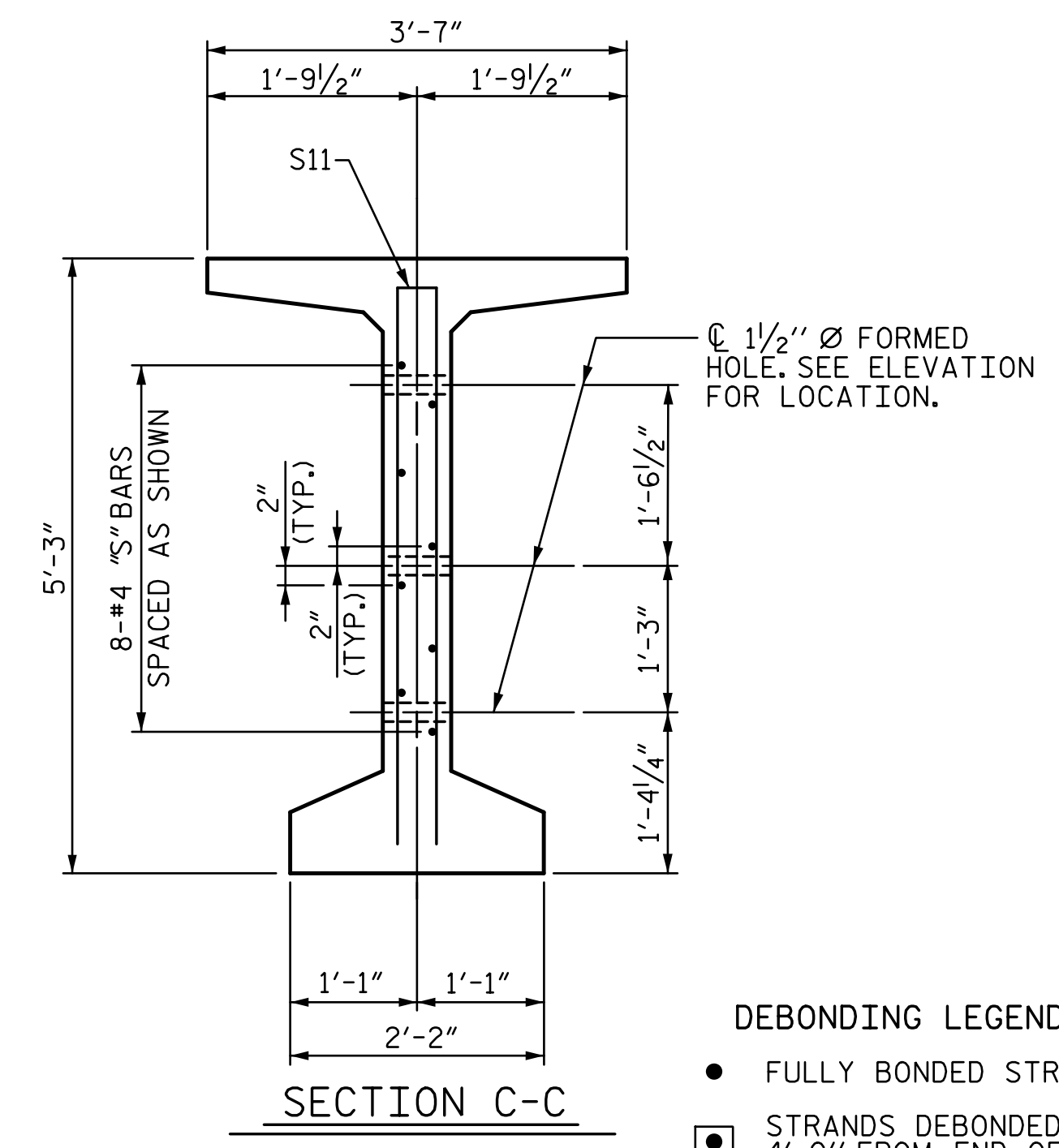
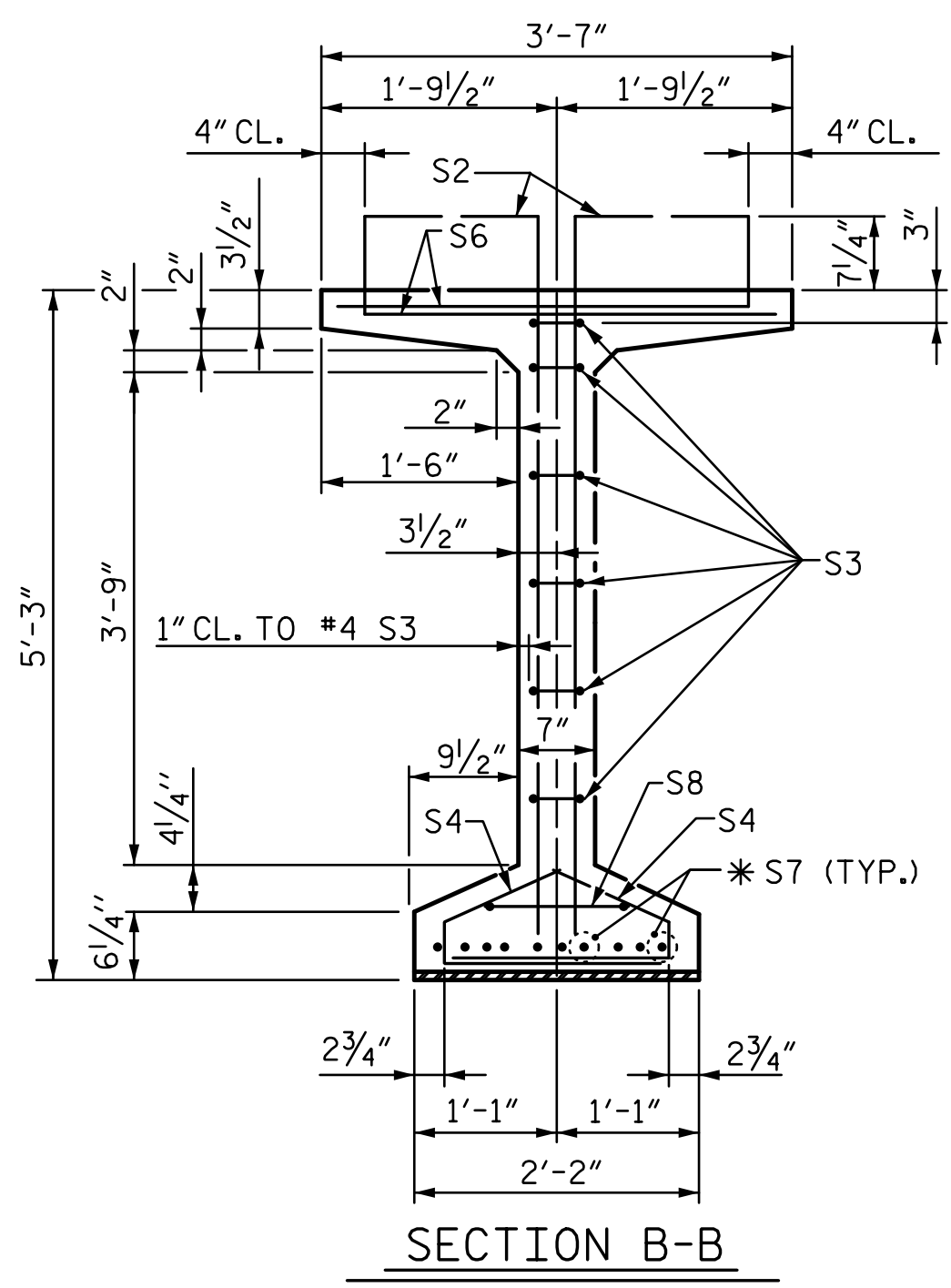


I:\Projects\255550\255550\0002\50_Deliverables & Submittals\255550\Structures\Site 6 RLV\412_012_R2514D_SMU_PC002.dgn
 4/10/2015 9:20:23 AM

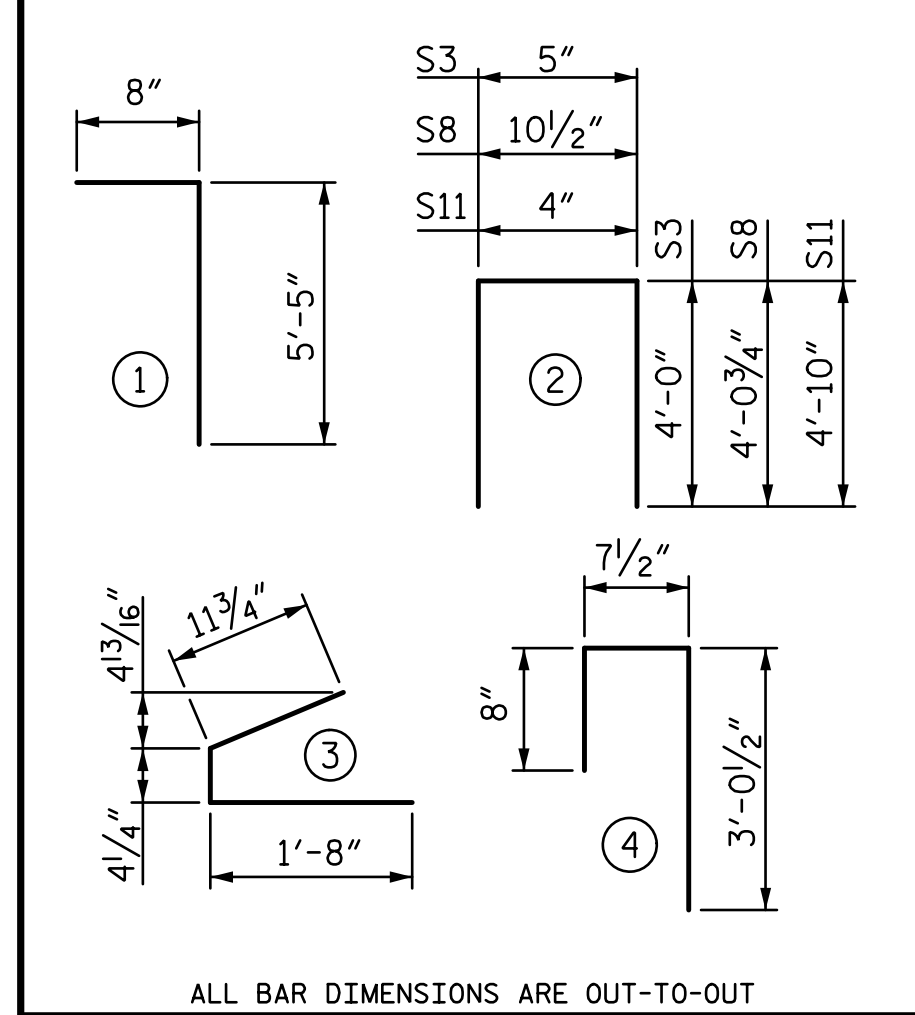


0.6" Ø L. R. GRADE 270 STRANDS		
AREA (SQUARE INCHES)	ULTIMATE STRENGTH (LBS. PER STRAND)	APPLIED PRESTRESS (LBS. PER STRAND)
0.217	58,600	43,950

REINFORCING STEEL FOR ONE GDR						
BAR	NUMBER	SIZE	TYPE	LENGTH	WEIGHT	
S1	154	#5	1	6'-1"	977	
S2	24	#6	1	6'-1"	219	
S3	12	#4	2	8'-5"	67	
S4	72	#4	3	3'-0"	144	
S6	178	#5	4	4'-4"	805	
*S7	20	#5	STR	3'-8"	76	
S8	2	#5	2	9'-0"	19	
S9	44	#5	STR	3'-3"	149	
S10	2	#3	STR	1'-10"	1	
EXTERIOR GDR.	S11	8	#5	2	10'-0"	83
INTERIOR GDR.	S11	16	#5	2	10'-0"	167
EXTERIOR GDR.	S12	16	#4	STR	8'-0"	86
INTERIOR GDR.	S12	32	#4	STR	8'-0"	171

* NOTE: S7 BARS SHALL BE BENT BEFORE SHIPMENT. HEAT BENDING SHALL NOT BE ALLOWED.

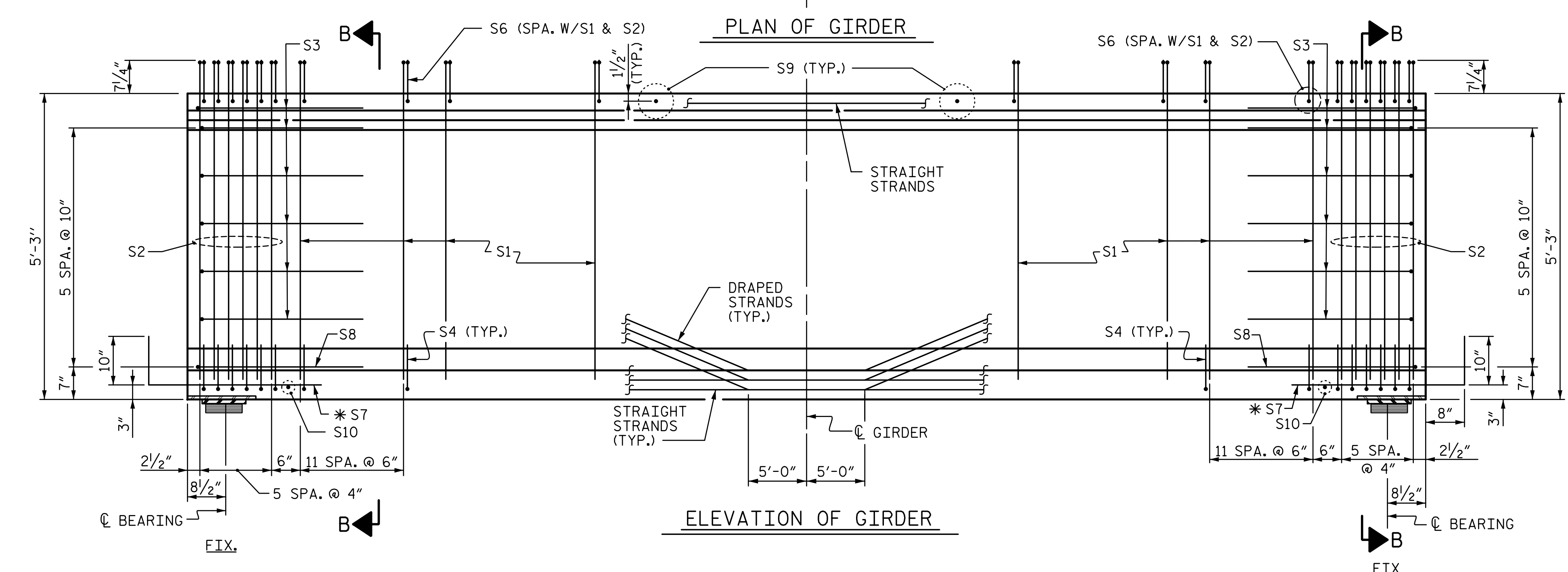
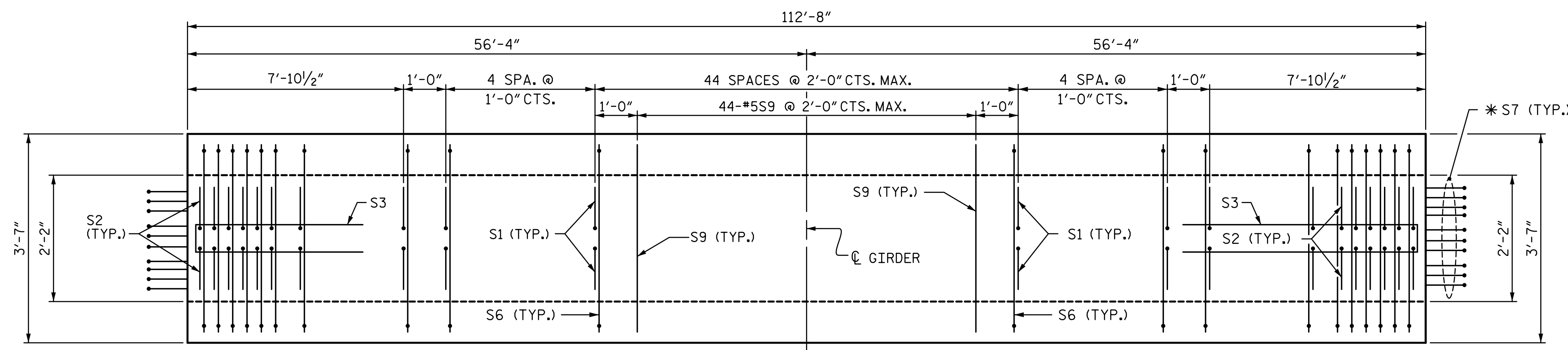
BAR TYPES



QUANTITIES FOR ONE GIRDER

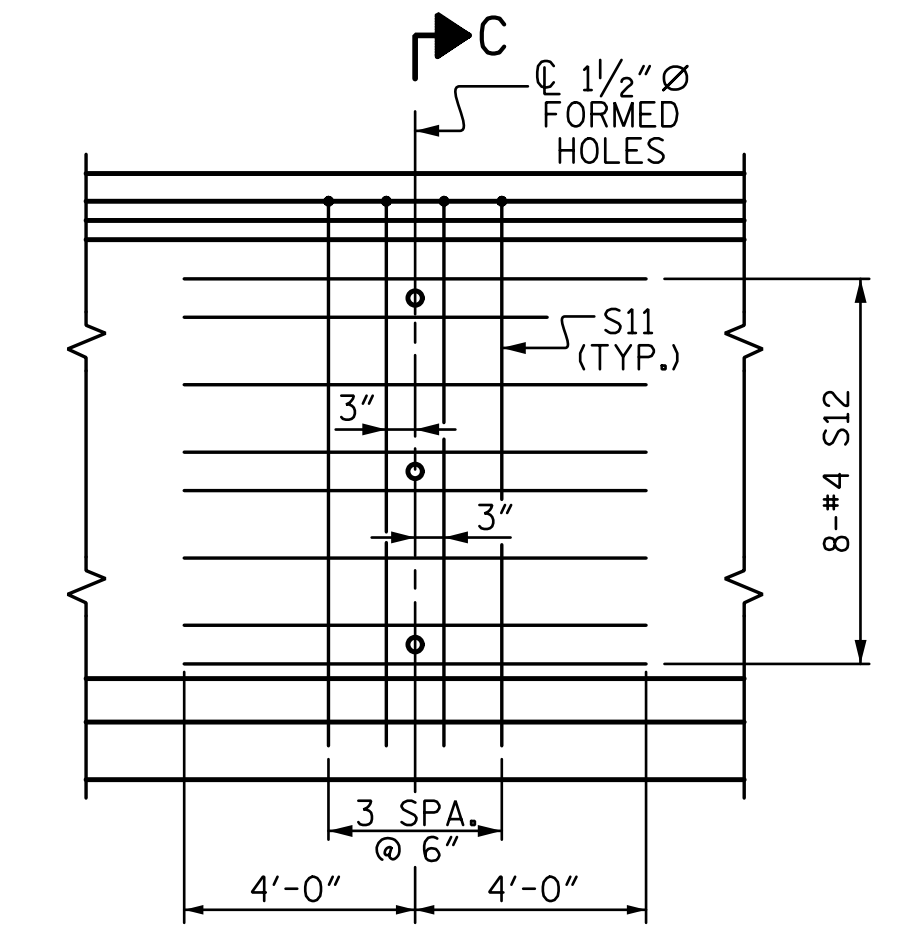
	REINFORCING STEEL	8,000 PSI CONCRETE	0.6" Ø L.R. STRANDS
	LB.	C.Y.	No.
EXTERIOR GIRDER	2,626	22.3	34
INTERIOR GIRDER	2,795	22.3	34

GIRDERS REQUIRED		
NUMBER	LENGTH	TOTAL LENGTH
5	112'-8"	563'-4"

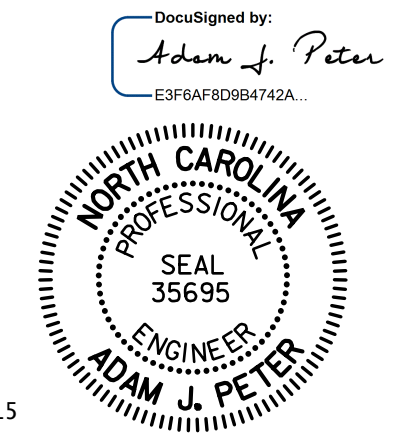


- DEBONDING LEGEND**
- FULLY BONDED STRANDS
 - STRANDS DEBONDED FOR 4'-0" FROM END OF GIRDER
 - ▲ STRANDS DEBONDED FOR 6'-0" FROM END OF GIRDER

- NOTES:**
- FOR DIAPHRAGM HOLE LOCATIONS, SEE "FRAMING PLAN" SHEET.
 - FOR GIRDER DETAILS, SEE SHEET 3 OF 3.
 - FOR NOTES, SEE SHEET 3 OF 3.
 - THE UPLIFT FORCE DUE TO DRAPED STRANDS IS 23 KIPS.



PROJECT NO. **R-2514D**
JONES & CRAVEN COUNTY
 STATION: **526+71.12 -L-**
= 16+08.07 -Y6-
 SHEET 2 OF 3



4/10/2015

DRAWN BY: CLG DATE: 6-14
 CHECKED BY: TJT DATE: 6-14
 DESIGN ENGINEER OF RECORD: T. TOWNSEND DATE: 6-14

STV / Ralph Whitehead Associates, Inc.
 900 West Trade Street, Suite 715
 Charlotte, NC 28202
 NC License Number F-0991

REVISIONS				SHEET NO.
NO.	BY:	DATE:	NO.	SHEET NO.
1			3	12-12
2			4	38