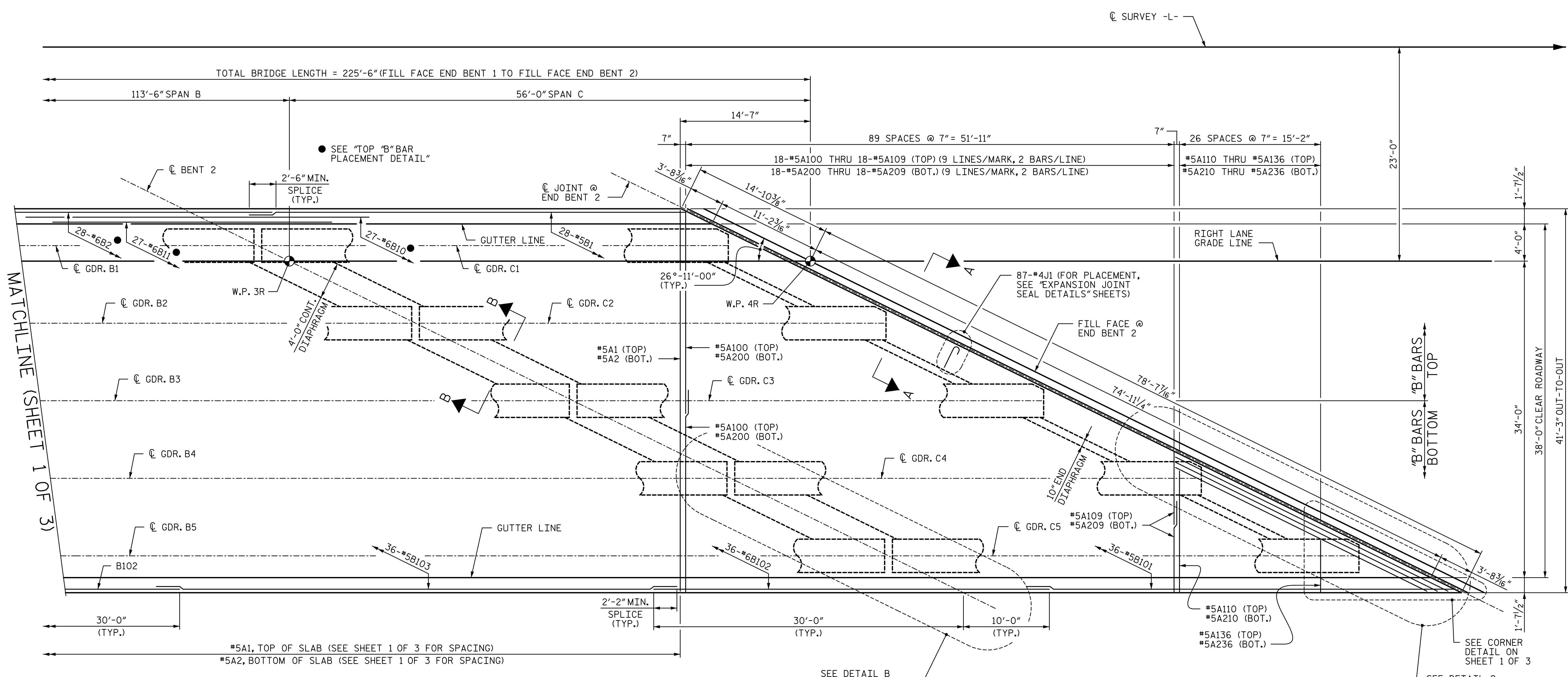
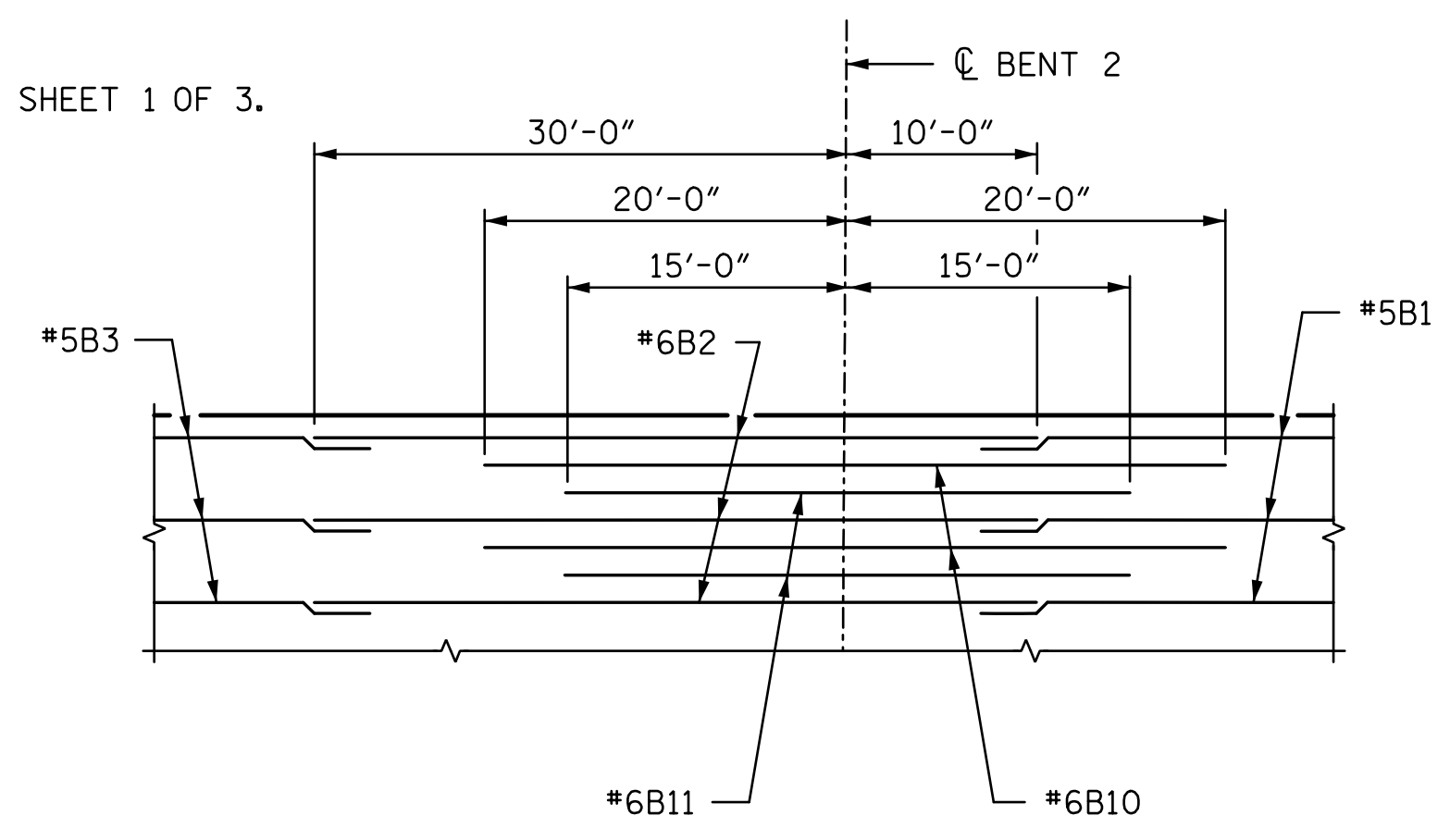


R:\Site 6\usta\Finals\Site 6 RL\412_008_R2514D_SMU_POS02.dgn 3/6/2015 9:08:36 AM



NOTES:

1. FOR NOTES, SEE SHEET 1 OF 3.



TOP "B" BAR PLACEMENT DETAIL

PLAN

PROJECT NO. **R-2514D**
JONES & CRAVEN COUNTY
 STATION: **526+71.12 -L-**
 = **16+08.07 -Y6-**
 SHEET 2 OF 3



STATE OF NORTH CAROLINA
 DEPARTMENT OF TRANSPORTATION
 RALEIGH
 SUPERSTRUCTURE
 PLAN OF SPANS
 SPANS A - C
 -RIGHT LANE-

DRAWN BY: **ATH** DATE: **6-14**
 CHECKED BY: **AJP** DATE: **5-14**
 DESIGN ENGINEER OF RECORD: **A. PETER** DATE: **6-14**

STV / Ralph Whitehead Associates, Inc.
 900 West Trade Street, Suite 715
 Charlotte, NC 28202
 NC License Number F-0991

REVISIONS						SHEET NO.
NO.	BY:	DATE:	NO.	BY:	DATE:	S12-8
1			3			TOTAL SHEETS
2			4			38