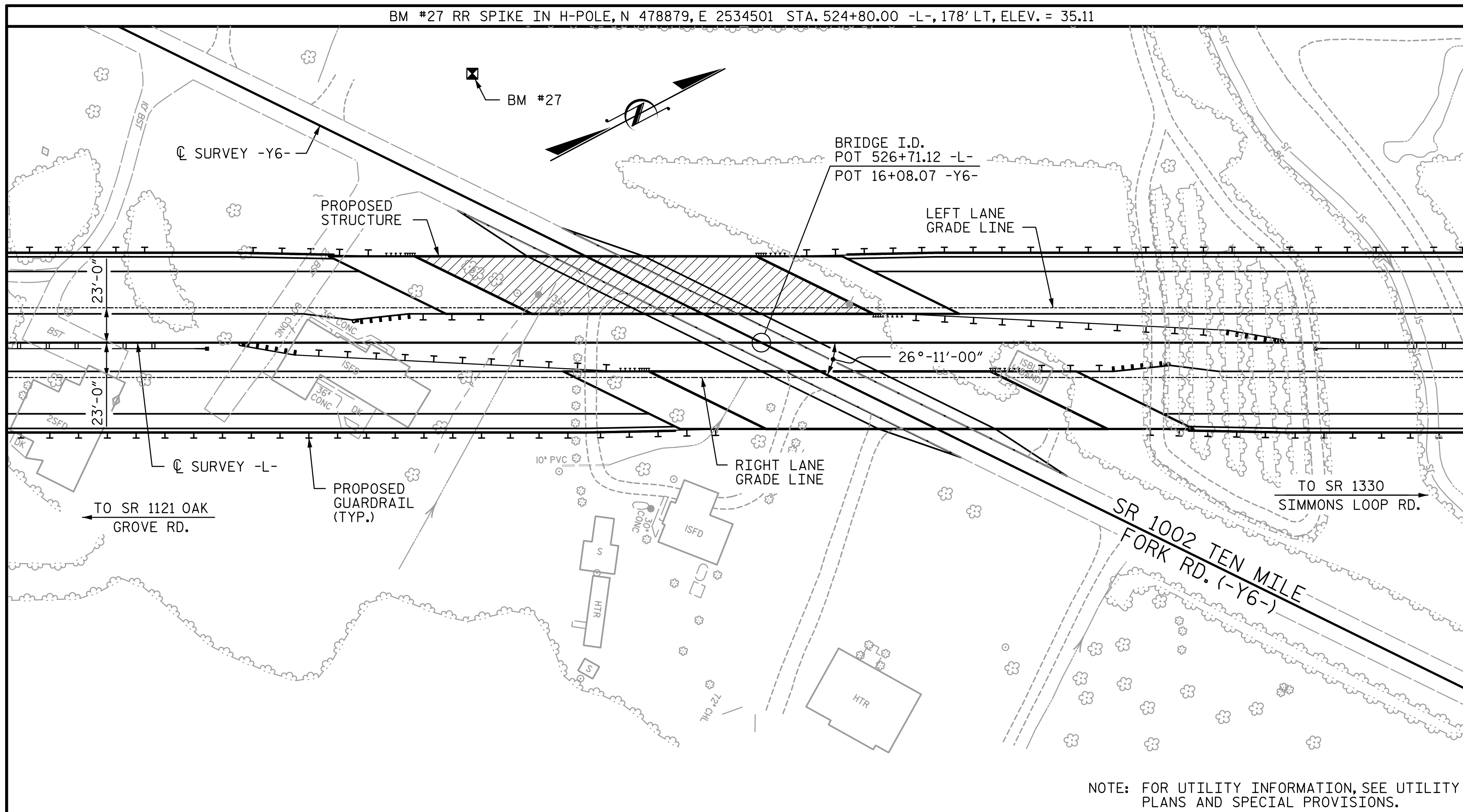


BM #27 RR SPIKE IN H-POLE, N 478879, E 2534501 STA. 524+80.00 -L-, 178' LT, ELEV. = 35.11



NOTE: FOR UTILITY INFORMATION, SEE UTILITY PLANS AND SPECIAL PROVISIONS.

LOCATION SKETCH

NOTES:

- ASSUMED LIVE LOAD = HL 93 OR ALTERNATE LOADING.
- THIS BRIDGE HAS BEEN DESIGNED IN ACCORDANCE WITH THE REQUIREMENTS OF THE AASHTO LRFD BRIDGE DESIGN SPECIFICATIONS.
- THIS BRIDGE IS LOCATED IN SEISMIC ZONE 1.
- FOR OTHER DESIGN DATA AND GENERAL NOTES, SEE SHEET SN.
- FOR SUBMITTAL OF WORKING DRAWINGS, SEE SPECIAL PROVISIONS.
- FOR FALSEWORK AND FORMWORK, SEE SPECIAL PROVISIONS.
- FOR CRANE SAFETY, SEE SPECIAL PROVISIONS.
- FOR GROUT FOR STRUCTURES, SEE SPECIAL PROVISIONS.
- FOR MAINTENANCE AND PROTECTION OF TRAFFIC BENEATH PROPOSED STRUCTURE, SEE SPECIAL PROVISIONS.
- REMOVABLE FORMS MAY BE USED IN LIEU OF METAL STAY-IN-PLACE FORMS IN ACCORDANCE WITH ARTICLE 420-3 OF THE STANDARD SPECIFICATIONS.
- NEEDLE BEAMS WILL NOT BE ALLOWED UNLESS OTHERWISE CALLED FOR ON THE PLANS OR APPROVED BY THE ENGINEER.
- FOR EROSION CONTROL MEASURES, SEE EROSION CONTROL PLANS.
- THE ELEVATION AND CLEARANCE SHOWN ON THE PLANS AT THE POINT OF MINIMUM VERTICAL CLEARANCE ARE FROM THE BEST INFORMATION AVAILABLE. PRIOR TO BEGINNING BRIDGE CONSTRUCTION, VERIFY THE ELEVATION ON THE EXISTING PAVEMENT AND CHECK THE CLEARANCE. REPORT ANY VARIATIONS TO THE ENGINEER. ANY PLAN REVISIONS NECESSARY TO ACHIEVE THE REQUIRED MINIMUM VERTICAL CLEARANCE WILL BE PROVIDED BY THE DEPARTMENT.
- FOR PLACING LOAD ON STRUCTURE MEMBERS, SEE SPECIAL PROVISIONS.

TOTAL BILL OF MATERIAL

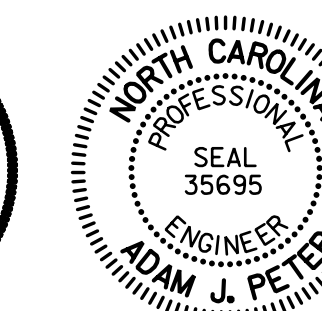
	FOUNDATION EXCAVATION FOR BENT	PDA TESTING	REINFORCED CONCRETE DECK SLAB	GROOVING BRIDGE FLOORS	CLASS A CONCRETE	BRIDGE APPROACH SLABS	REINFORCING STEEL	SPIRAL COLUMN REINFORCING STEEL	MODIFIED 63" PRESTRESSED CONCRETE GIRDERS	12" PRESTRESSED CONCRETE PILES	16" PRESTRESSED CONCRETE PILES	PILE REDRIVES	CONCRETE BARRIER RAIL	4" SLOPE PROTECTION	ELASTOMERIC BEARINGS	EXPANSION JOINT SEALS
	LUMP SUM	EA.	SQ. FT.	SQ. FT.	CU. YD.	LUMP SUM	LBS.	LBS.	NO. LIN. FT.	NO. LIN. FT.	NO. LIN. FT.	EA.	LIN. FT.	SQ. YDS.	LUMP SUM	LUMP SUM
SUPERSTRUCTURE			9,107	9,233		LUMP SUM			15 1,064.9				487.8		LUMP SUM	LUMP SUM
END BENT 1					114.4		14,814				12 720	6		950		
BENT 1	LUMP SUM				180.3		29,548	1,887		40 1,400		10				
BENT 2	LUMP SUM				180.3		29,743	2,009		40 1,600		10				
END BENT 2					109.0		15,525				13 975	6		520		
TOTAL	LUMP SUM	2	9,107	9,233	584.0	LUMP SUM	89,630	3,896	15 1,064.9	80 3,000	25 1,695	32	487.8	1,470	LUMP SUM	LUMP SUM

DocuSigned by: Kevin G. Bailey

DocuSigned by: Adam J. Peter



3/10/2015



3/10/2015

PROJECT NO. R-2514D
JONES & CRAVEN COUNTY

STATION: 526+71.12 -L-
= 16+08.07 -Y6-

SHEET 3 OF 3

STATE OF NORTH CAROLINA
 DEPARTMENT OF TRANSPORTATION
 RALEIGH

GENERAL DRAWING
 LOCATION SKETCH, GENERAL
 NOTES, AND TOTAL BILL
 OF MATERIAL
 -LEFT LANE-

REVISIONS

NO.	BY:	DATE:	NO.	BY:	DATE:	SHEET NO.
1			3			S11-3
2			4			TOTAL SHEETS 38

DRAWN BY: CLG DATE: 6-14
 CHECKED BY: TJT DATE: 6-14

DESIGN ENGINEER OF RECORD: T. TOWNSEND DATE: 6-14

STV / Ralph Whitehead Associates, Inc.
 900 West Trade Street, Suite 715
 Charlotte, NC 28202
 NC License Number F-0991

R:\Site 6\usr\Final\Site 6 LL\411_003_R2514D_SMU_GD03.dgn 3/9/2015 8:52:15 AM