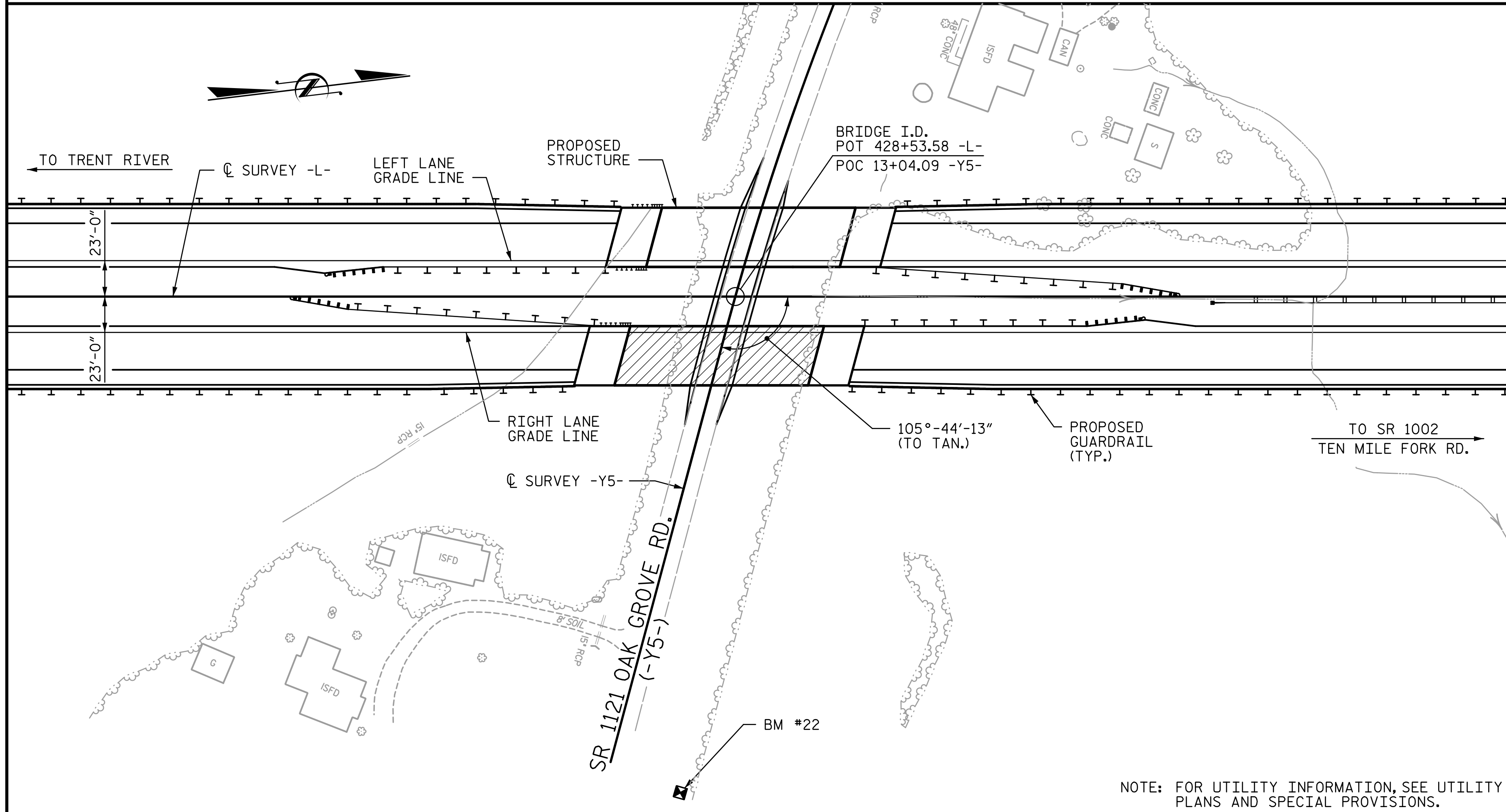


BM #22 RR SPIKE IN POWER POLE (A10) OFF OAK GROVE RD, N 469890, E 2531409 STA. 428+18.00 -L-, 318' RT, ELEV. = 39.54



NOTE: FOR UTILITY INFORMATION, SEE UTILITY PLANS AND SPECIAL PROVISIONS.

LOCATION SKETCH

GENERAL NOTES:

- ASSUMED LIVE LOAD = HL-93 OR ALTERNATE LOADING.
- FOR OTHER DESIGN DATA AND GENERAL NOTES, SEE SHEET SN.
- THIS BRIDGE HAS BEEN DESIGNED IN ACCORDANCE WITH THE AASHTO LRFD BRIDGE DESIGN SPECIFICATIONS.
- THIS BRIDGE IS LOCATED IN SEISMIC ZONE 1.
- REMOVABLE FORMS MAY BE USED IN LIEU OF METAL STAY-IN-PLACE FORMS IN ACCORDANCE WITH ARTICLE 420-3 OF THE STANDARD SPECIFICATIONS.
- NEEDLE BEAMS WILL NOT BE ALLOWED UNLESS OTHERWISE CALLED FOR ON THE PLANS OR APPROVED BY THE ENGINEER.
- FOR EROSION CONTROL MEASURES, SEE EROSION CONTROL PLANS.
- FOR FOUNDATION NOTES, SEE "FOUNDATION LAYOUT" SHEET.
- FOR MAINTENANCE AND PROTECTION OF TRAFFIC BENEATH PROPOSED STRUCTURE, SEE SPECIAL PROVISIONS.
- FOR PLACING LOAD ON STRUCTURE MEMBERS, SEE SPECIAL PROVISIONS.
- FOR FALSEWORK AND FORMWORK, SEE SPECIAL PROVISIONS.
- FOR SUBMITTAL OF WORKING DRAWINGS, SEE SPECIAL PROVISIONS.
- FOR CRANE SAFETY, SEE SPECIAL PROVISIONS.
- FOR GROUT FOR STRUCTURES, SEE SPECIAL PROVISIONS.
- THE ELEVATION AND CLEARANCE SHOWN ON THE PLANS AT THE POINT OF MINIMUM VERTICAL CLEARANCE ARE FROM THE BEST INFORMATION AVAILABLE. PRIOR TO BEGINNING BRIDGE CONSTRUCTION, VERIFY THE ELEVATION(S) ON THE EXISTING PAVEMENT AND CHECK THE CLEARANCE. REPORT ANY VARIATIONS TO THE ENGINEER. ANY PLAN REVISIONS NECESSARY TO ACHIEVE THE REQUIRED MINIMUM VERTICAL CLEARANCE WILL BE PROVIDED BY THE DEPARTMENT.

TOTAL BILL OF MATERIAL

	PDA TESTING	REINFORCED CONCRETE DECK SLAB	GROOVING BRIDGE FLOORS	CLASS A CONCRETE	BRIDGE APPROACH SLABS	REINFORCING STEEL	54" PRESTRESSED CONCRETE GIRDERS		HP 12x53 STEEL PILES		STEEL PILE POINTS	PILE REDRIVES	CONCRETE BARRIER RAIL	4" SLOPE PROTECTION	ELASTOMERIC BEARINGS
							NO.	LIN. FT.	NO.	LIN. FT.					
	EA.	SQ. FT.	SQ. FT.	CU. YD.	LUMP SUM	LBS.									
SUPERSTRUCTURE		3,946	4,966		LUMP SUM		5	466.35					187.88		LUMP SUM
END BENT 1				30.7		4,697			7	490	7	4		275	
END BENT 2				30.0		4,591			7	455	7	4		275	
TOTAL	1	3,946	4,966	60.7	LUMP SUM	9,288	5	466.35	14	945	14	8	187.88	550	LUMP SUM

PROJECT NO. R-2514D

JONES & CRAVEN COUNTY

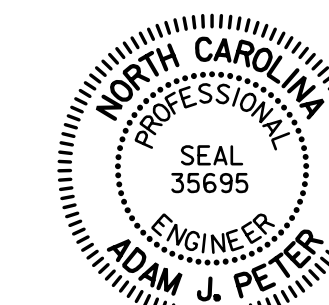
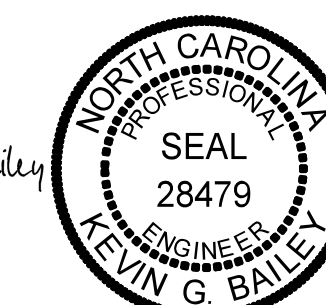
STATION: 428+53.58 -L-  
= 13+04.09 -Y5-

SHEET 3 OF 3

STATE OF NORTH CAROLINA  
DEPARTMENT OF TRANSPORTATION  
RALEIGH

GENERAL DRAWING  
LOCATION SKETCH,  
GENERAL NOTES AND TOTAL  
BILL OF MATERIAL  
-RIGHT LANE-

DocuSigned by:  
Adam J. Peter  
E3F6AF8D084742A...



DocuSigned by:  
Kevin G. Bailey  
4025ECCDF784401...  
3/10/2015

STV / Ralph Whitehead Associates, Inc.  
900 West Trade Street, Suite 715  
Charlotte, NC 28202  
NC License Number F-0991

REVISIONS						SHEET NO.
NO.	BY:	DATE:	NO.	BY:	DATE:	S10-3
1			3			TOTAL SHEETS
2			4			24

R:\Site 5\ussta\Finals\Site 5 RL\410\_003\_R2514D\_SMU\_GD03.dgn 3/5/2015 5:12:05 PM

DRAWN BY: VMW DATE: 6-14  
CHECKED BY: MLO DATE: 6-14  
DESIGN ENGINEER OF RECORD: A. PETER DATE: 6-14