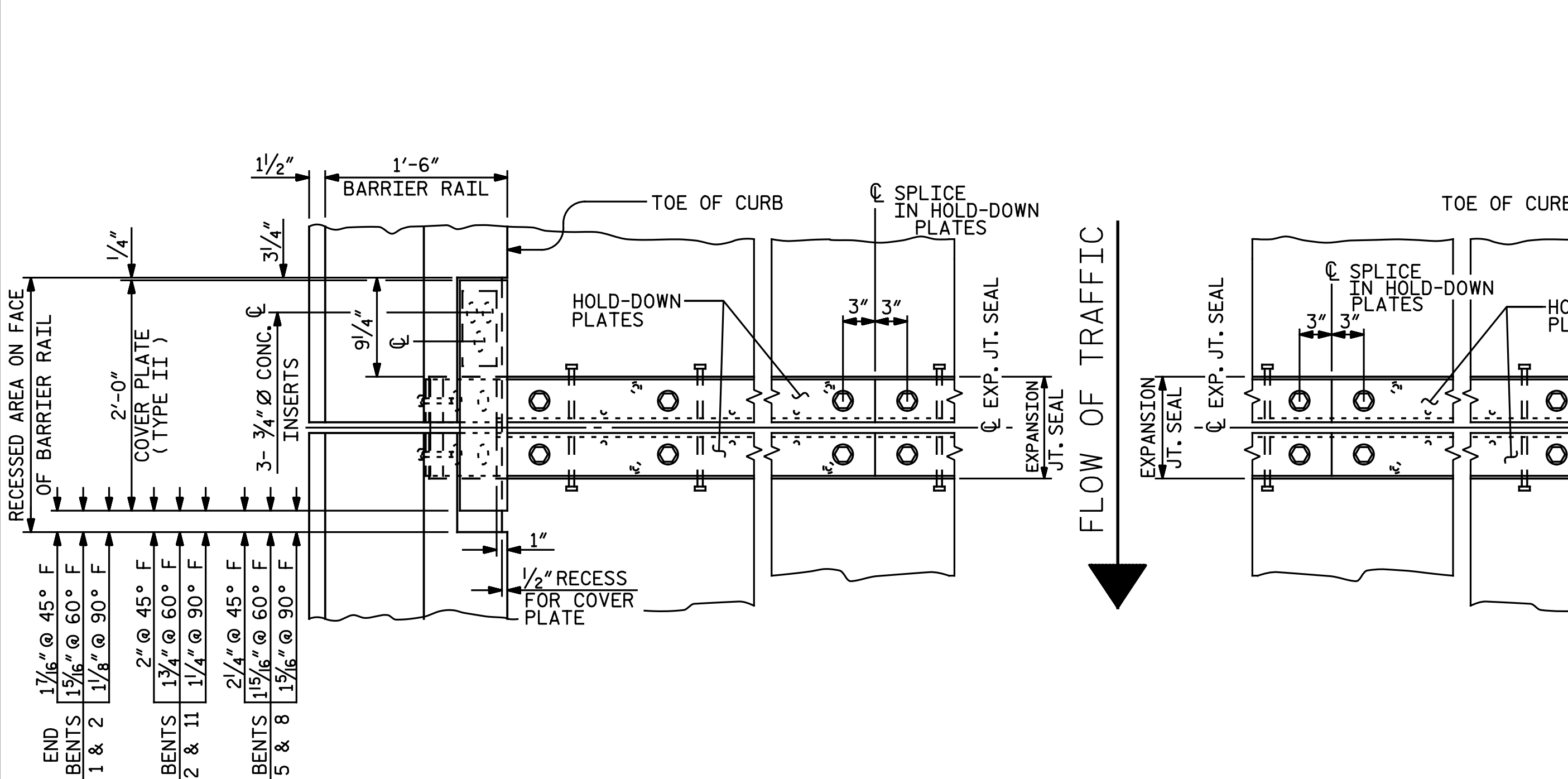
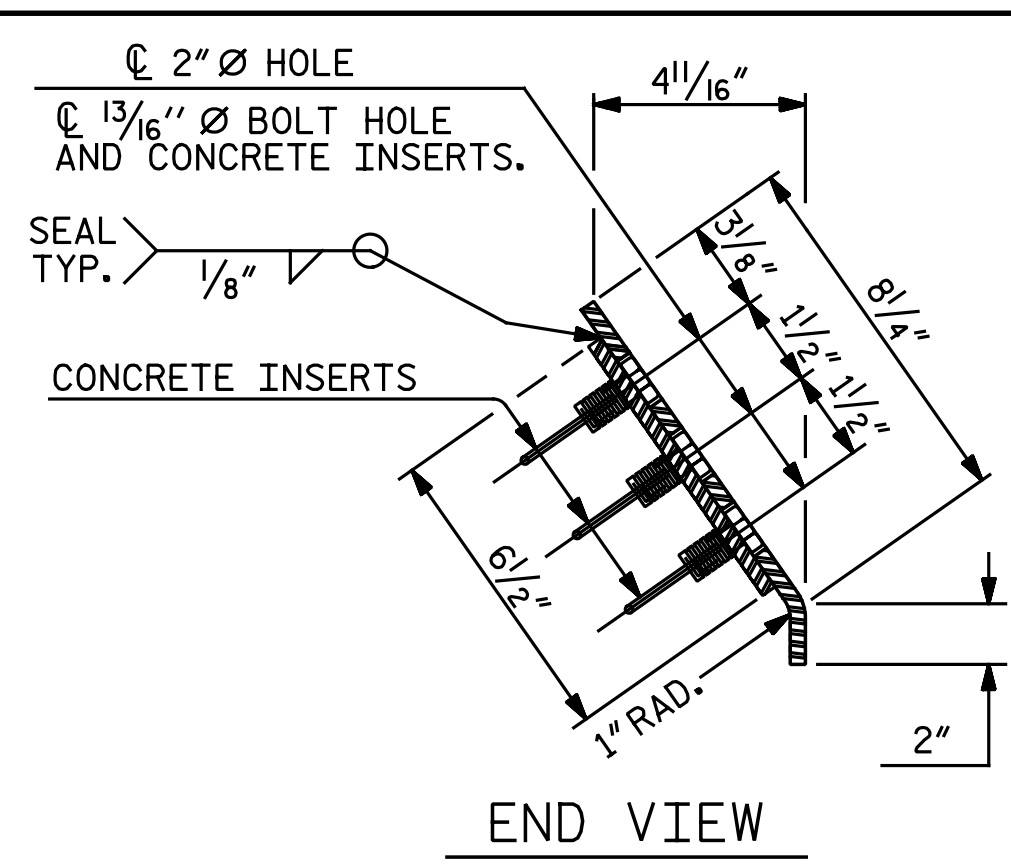


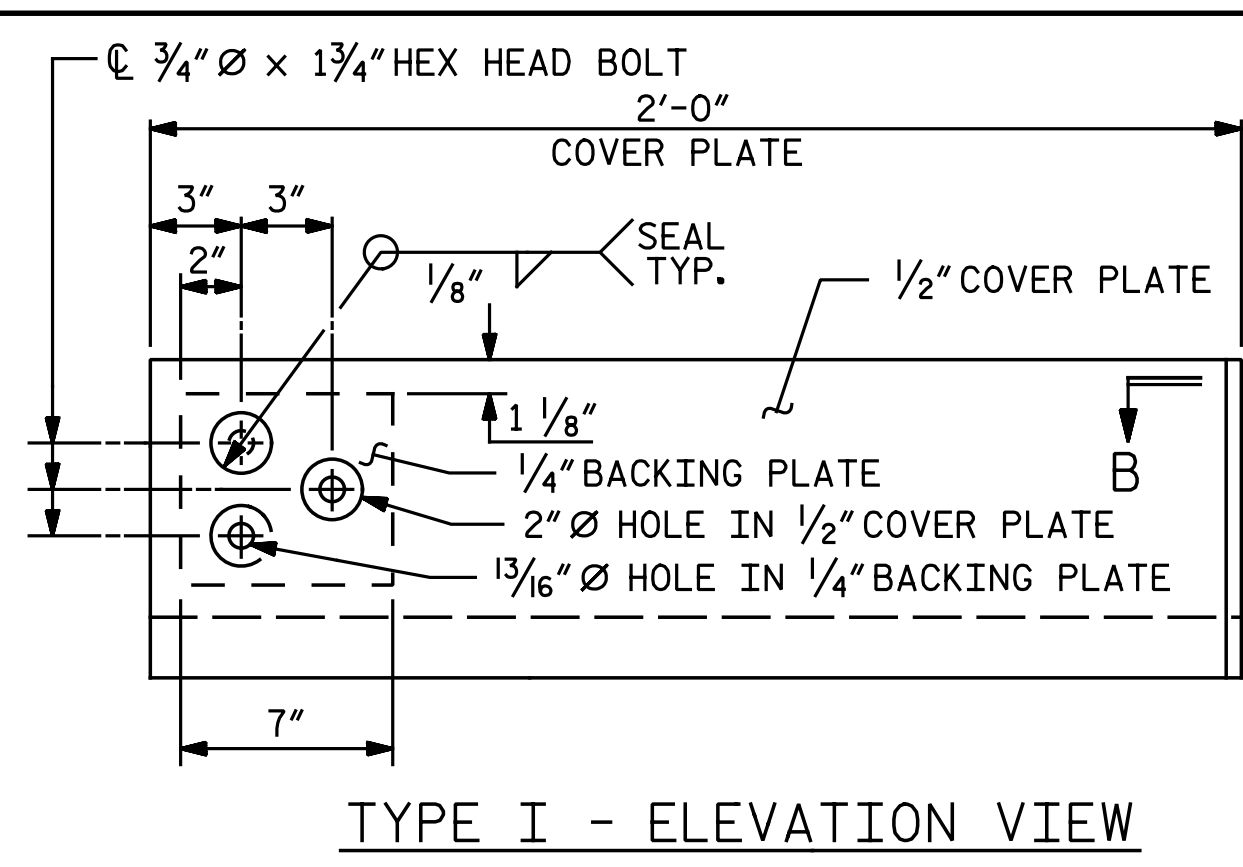
SECTION THRU RAIL NORMAL TO JOINT



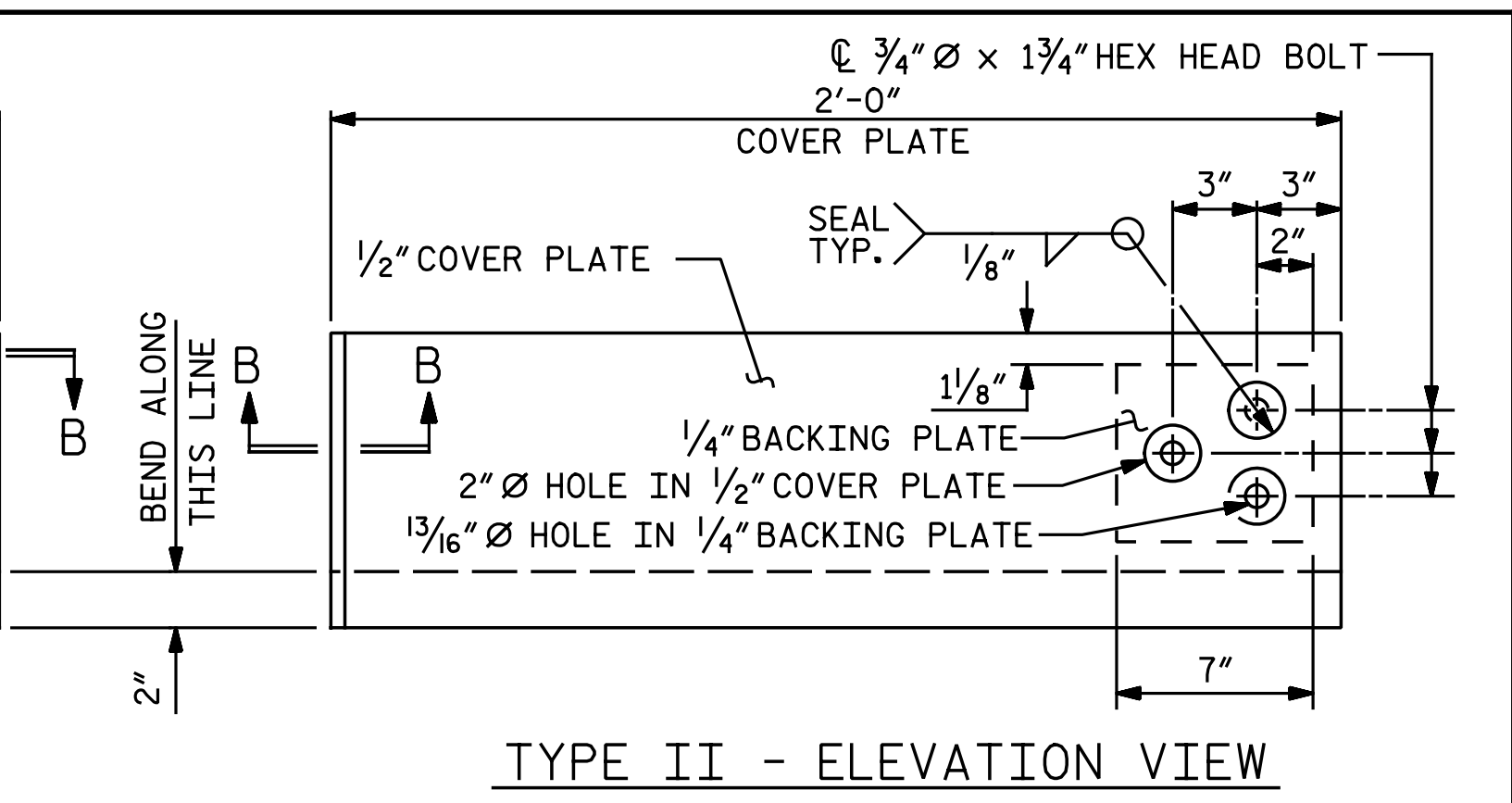
PLAN OF EXPANSION JOINT SEAL



END VIEW

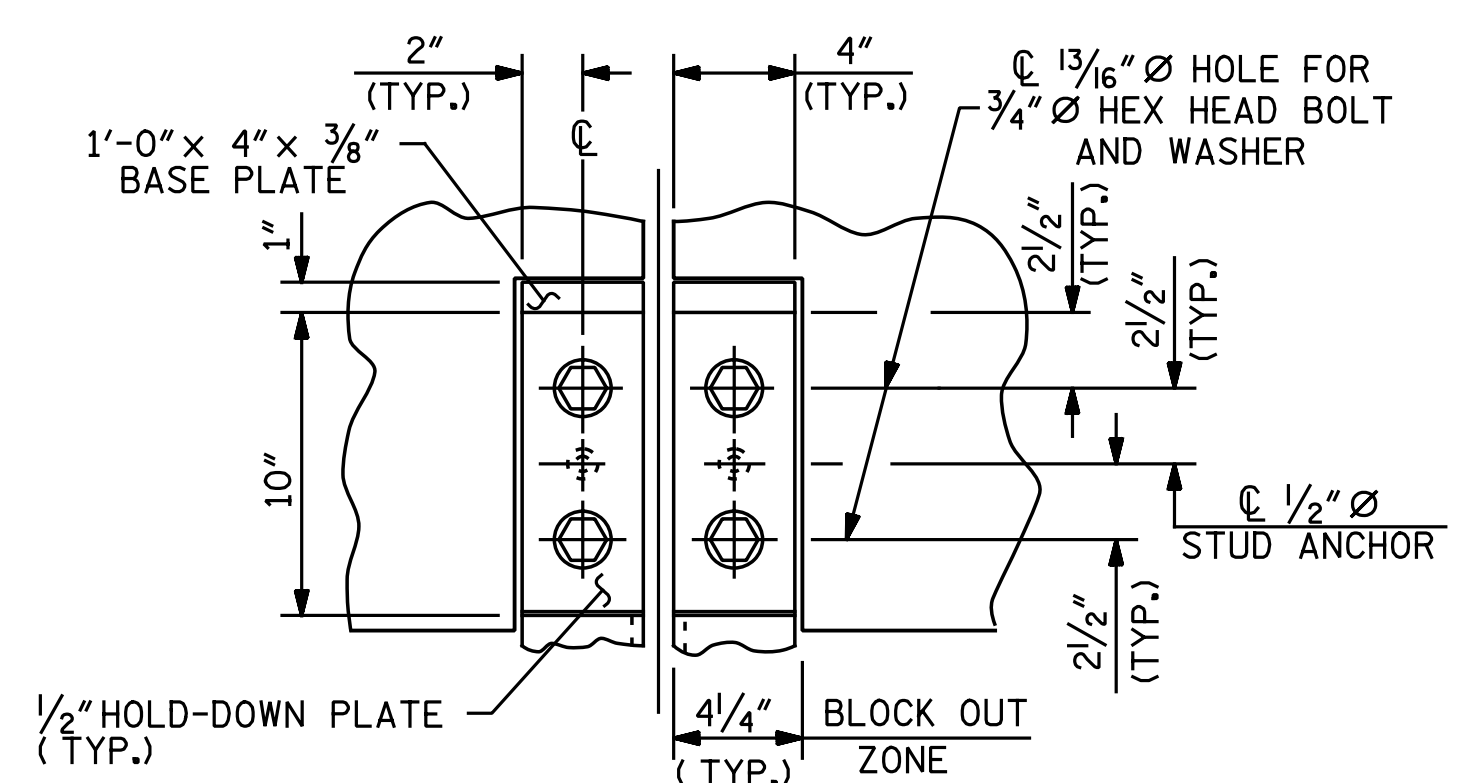


TYPE I - ELEVATION VIEW

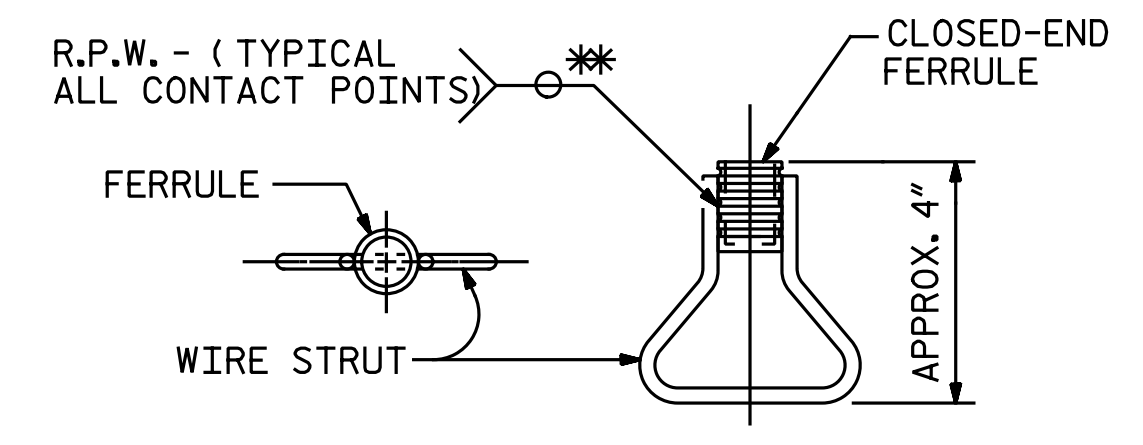


TYPE II - ELEVATION VIEW

COVER PLATE DETAILS

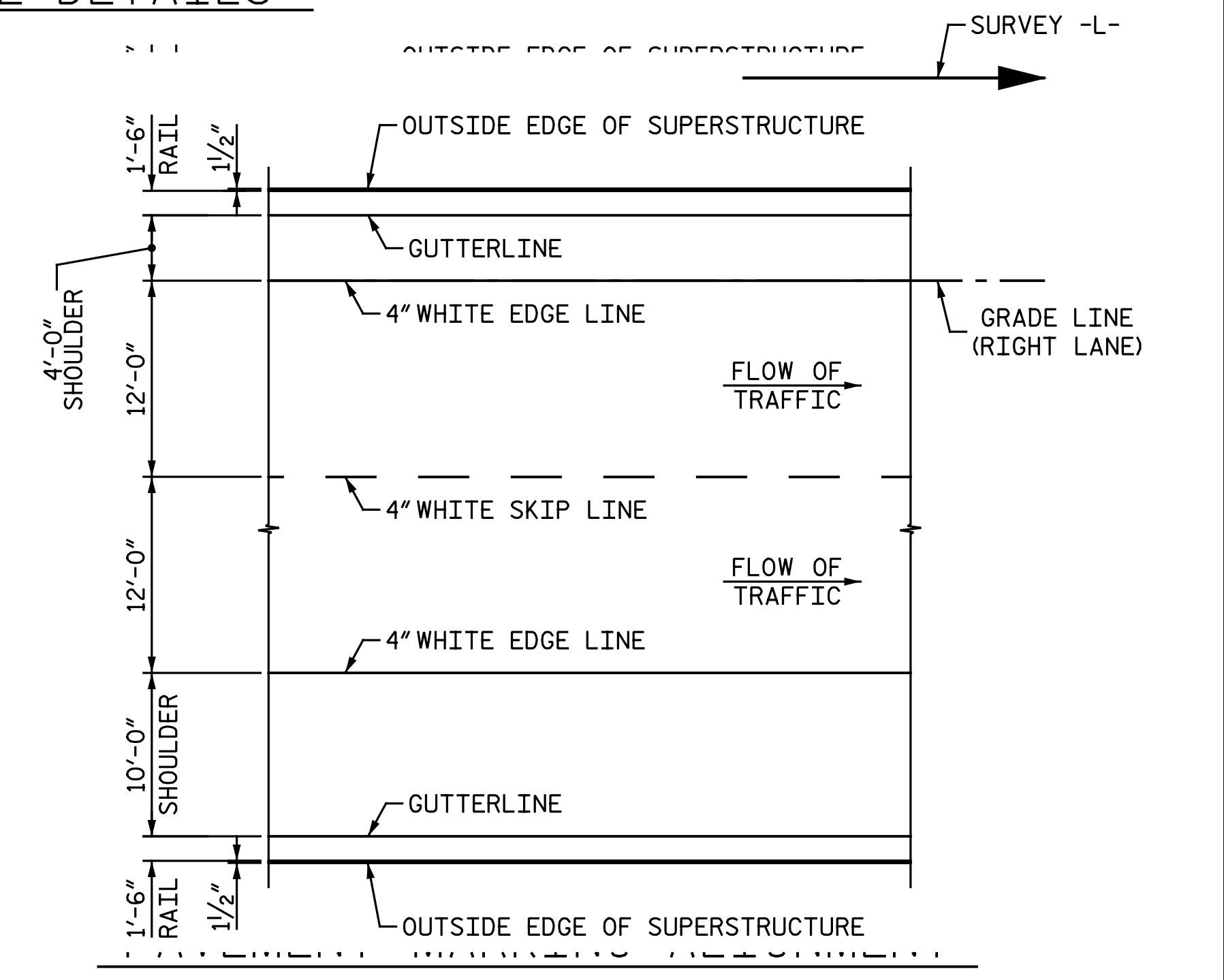


SECTION A - A



PLAN ELEVATION CONCRETE INSERT

*EACH WELDED ATTACHMENT OF WIRE TO FERRULE SHALL DEVELOP THE TENSILE STRENGTH OF THE WIRE.



SECTION B - B

PROJECT NO. R-2514D
 JONES COUNTY
 STATION: 389+47.50 -L-
 SHEET 2 OF 2

Professional Engineer seals for Andrew Phillips and Dwan Hathaway, North Carolina, dated 3/13/2015.

STATE OF NORTH CAROLINA
 DEPARTMENT OF TRANSPORTATION
 RALEIGH
 SUPERSTRUCTURE
 EXPANSION JOINT
 SEAL DETAILS
 FOR BARRIER RAIL
 RIGHT LANE

DRAWN BY: M. D. MAYHEW DATE: 8-13-13
 CHECKED BY: A. L. PHILLIPS DATE: 8-23-13

DWG. 24 OF 68

REVISIONS		SHEET NO.	
NO.	DATE	BY	DATE
1			
2			

SHEET NO. S08-24
 TOTAL SHEETS 68



Michael Baker Engineering
 8000 Regency Parkway, Suite 600
 Cary, North Carolina 27516
 NC License No.: F-1084